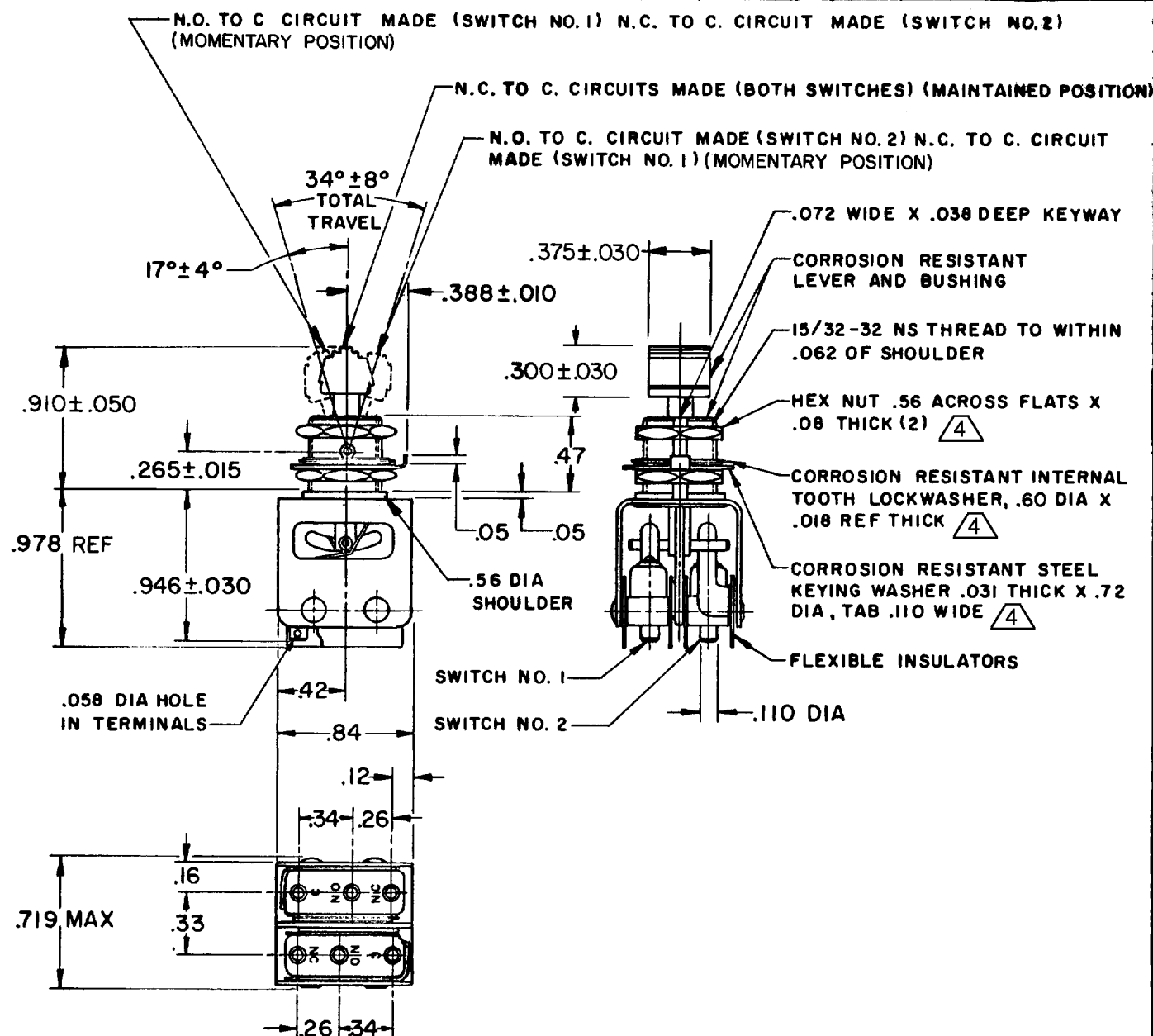


MICRO SWITCH

FREEPORT ILLINOIS, U.S.A
A DIVISION OF HONEYWELL
FED. MFG. CODE 91929

ASSEMBLY- TOGGLE SWITCH

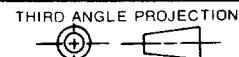
CATALOG LISTING
13AT280



NOTES

- 1 - UNIT INCLUDES CAT. LISTING 21SM284 (MS25085-1) BASIC SWITCH (2)
- 2 - TERMINALS ARE PLATED FOR SOLDERING
- 3 - KNOB PORTION OF TOGGLE LEVER BLACK ANODIZED
- 4 HARDWARE FURNISHED ASSEMBLED WITH SWITCH OR IN PACKET PER MIL-PRF-8805
- 5 - REPLACEMENT MOUNTING HARDWARE PACKET 15PA312-AT

THIS DRAWING COVERS A PROPRIETARY ITEM AND IS THE PROPERTY OF MICRO SWITCH, A DIVISION OF HONEYWELL. THIS DRAWING IS NOT TO BE COPIED OR USED WITHOUT THE APPROVAL OF MICRO SWITCH.



CHARACTERISTICS

ELECTRICAL DATA

SCALE FULL

CONTACT ARRANGEMENT
S P D T (2)

DO NOT SCALE PRINT

250 VAC ----- 5 AMP
30 VOLTS DC RATING

INDUCTIVE ----- SEA LEVEL --- 3 AMP
50,000 FT --- 2.5 AMP
RESISTIVE ----- SEA LEVEL --- 5 AMP
50,000 FT --- 5 AMP
MAXIMUM INRUSH ----- 24 AMP

TOLERANCES			
APPLY TO DESIGN UNITS. CONVERSIONS ARE ONLY FOR REFERENCE. UNLESS NOTED, TOLERANCES ARE ±			
DIM.	TOL.	DIM.	TOL.
mm	mm/in	in	mm/in
NO PLACES	X	1/04	
ONE PLACE	X,X	0.4/016	X,X
TWO PLACES	X,XX	0.15/006	X,XX
THREE PLACES			X,XXX

SI METRIC

US CUSTOMARY

DESIGN UNITS

WEIGHT

CATALOG LISTING
13AT280

PAGE 1 OF 1
RELEASE NO. PR-4513

ISSUE
M
7

REVISIONS

A	NEW DWG	PR-4513
B	CO	50566-B
C	WJM	MAY 82
D	CO	52725
E	R J H	24 MAY 83
F	G J W	28 SEP 85
G	DAW	20 FEB 91
H	CSL	24 APR 02

FO-52848-A
DRAWN
K P K15 OCT 74

Mouser Electronics

Authorized Distributor

Click to View Pricing, Inventory, Delivery & Lifecycle Information:

[Honeywell:](#)

[13AT280](#)