

MICRO SWITCH
a Honeywell Division

FED. MFG. CODE 91929

SWITCH - BASIC

CATALOG LISTING

V7-4A17D8-407

CW-C4007

CATALOG LISTING

V7-4A17D8-407

REPLACES X95640-V7

RELEASE NO. PR-20157

M

ISSUE
3

CHECK

REVISIONS

A	REL DWG PR-20157
JWB	30 JUN 92
B	CO 76420
DCS	29 NOV 93

CHECK

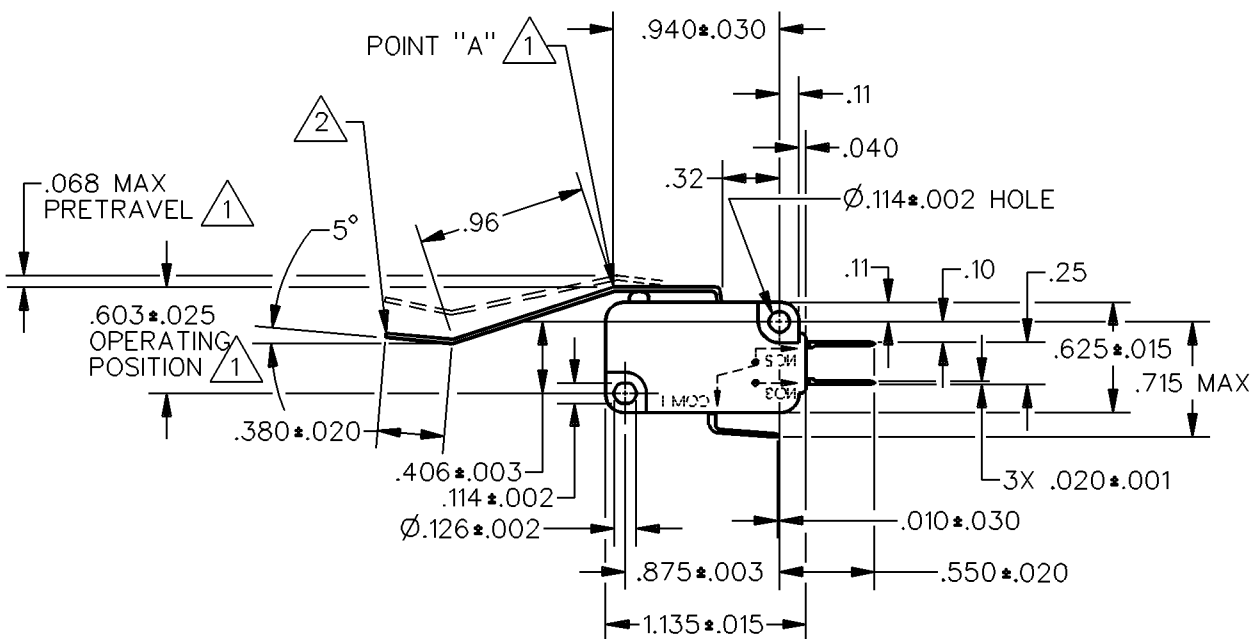
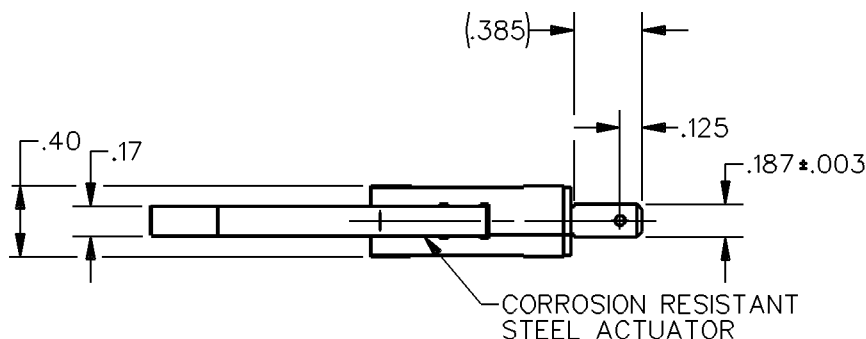
6 JUL 92

WJC

CHECK

30 JUN 92

DDM/CAD
DRAWN

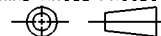



- NOTES
- 1 CHARACTERISTICS MEASURED AT POINT "A"
 - 2 FORCE CHARACTERISTICS AT END OF LEVER

ANSI Y14.5M-1982 APPLIES

THIS DRAWING COVERS A PROPRIETARY ITEM AND IS THE PROPERTY OF MICRO SWITCH, A DIVISION OF HONEYWELL. THIS DRAWING IS NOT TO BE COPIED OR USED WITHOUT THE APPROVAL OF MICRO SWITCH.

THIRD ANGLE PROJECTION



CHARACTERISTICS	ELECTRICAL DATA	SCALE FULL	DO NOT SCALE PRINT
OPERATING FORCE---2 10 GRAMS MAX	CONTACT ARRANGEMENT S P D T	UNLESS OTHERWISE SPECIFIED TOLERANCES ARE	
RELEASE FORCE --- 2 1/2 GRAM MIN	5A 125, 250, 277 VAC L162 1/10 HP 250 VAC		
DIFFERENTIAL TRAVEL --- 1 .015 MAX		ONE PLACE (.01) ± .030	
OVERTRAVEL --- 1 .040 MIN		TWO PLACE (.00) ± .015	
RELEASE TRAVEL --- 1 .010 MIN		THREE PLACE (.000) ± .005	
		ANGLES ± 3°	
		WEIGHT	

Mouser Electronics

Authorized Distributor

Click to View Pricing, Inventory, Delivery & Lifecycle Information:

[Honeywell:](#)

[V7-4A17D8-407](#)