

MICRO SWITCH

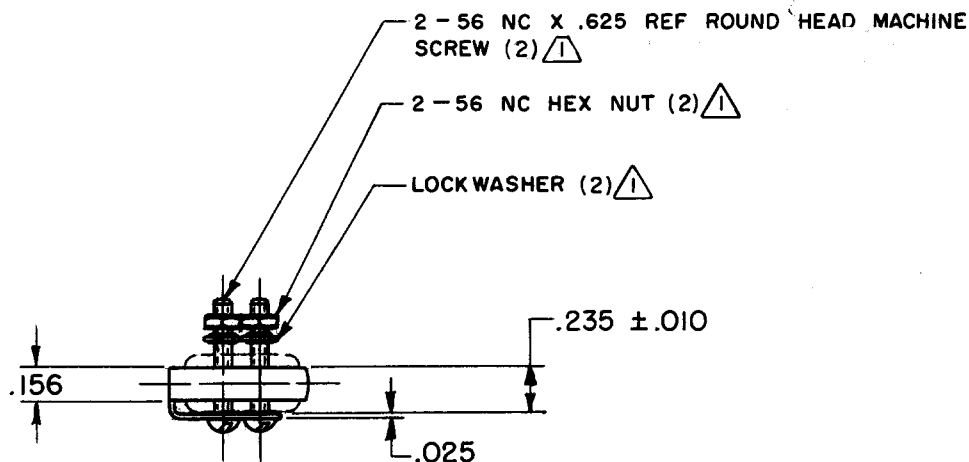
A DIVISION OF MINNEAPOLIS-HONEYWELL REGULATOR COMPANY
FREDERICK, ILLINOIS

FED. MFR. CODE 91929

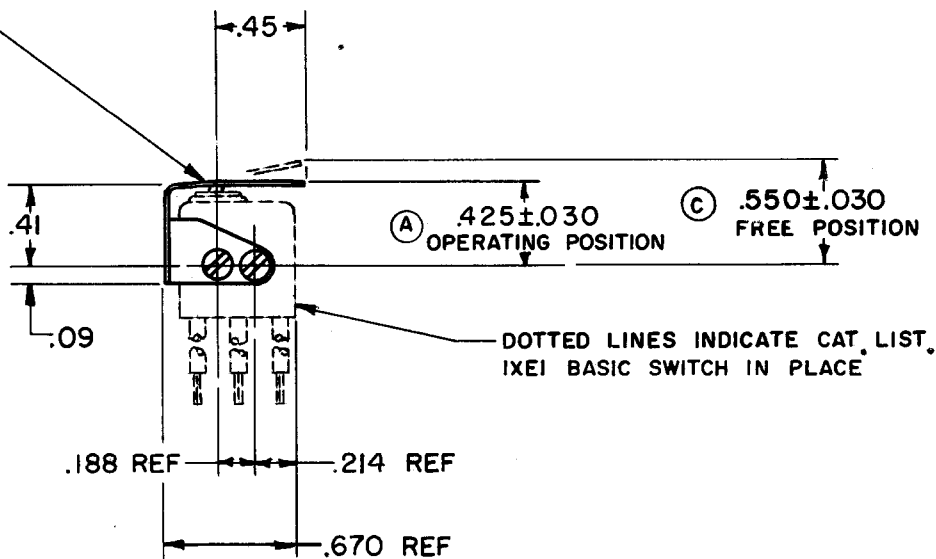
ACTUATOR - SWITCH

CATALOG LISTING

JM - 1



.012 THICK CORROSION RESISTANT STEEL LEAF



NOTE -
 Δ - FURNISHED UNASSEMBLED

THIS DRAWING COVERS A PROPRIETARY ITEM AND IS THE PROPERTY OF MICRO SWITCH, A DIVISION OF MINNEAPOLIS-HONEYWELL REGULATOR CO. THIS DRAWING IS NOT TO BE COPIED OR USED WITHOUT THE APPROVAL OF MICRO SWITCH.

CHARACTERISTICS WITH IXEI BASIC SWITCH INSTALLED

OPERATING FORCE ——— 21 OZ MAX

RELEASE FORCE ——— (B) ——— 3 OZ MIN

DIFFERENTIAL TRAVEL ——— .012 MAX

OVERTRAVEL ——— .009 MIN

ELECTRICAL DATA

CONTACT ARRANGEMENT

BREAK DISTANCE

SCALE FULL

DO NOT SCALE PRINT

UNLESS OTHERWISE SPECIFIED

DIMENSIONS ARE IN INCHES

TOLERANCES ARE:

ONE PLACE (.0) \pm .030
TWO PLACE (.00) \pm .015
THREE PLACE (.000) \pm .005
ANGLES \pm

WEIGHT

(A)

JM - 1

M

DRAWING NUMBER

7

ISSUE

3

REVISIONS

A CO15157

M B F

27 SEP 60

B CO17844

OMW

26 FEB 63

C CO18559

VDF

17 OCT 63

D CO47771

CJH

17 MAY 80

E CO74078

LJF

25 NOV 92

F CO79303

DLT

6 MAR 95

REPLACES

RELEASE NO. SR 8953

CHECK 28 APR 60

CHECK PAW

CHECK 4 MAY 60

CHECK 4 MAY 60

CHECK 17 MAY 80

CHECK 25 NOV 92

CHECK 10 MAY 60

CHECK 28 APR 60

CHECK 28 APR 60

CHECK 28 APR 60

DRAWN

FO-50376

Mouser Electronics

Authorized Distributor

Click to View Pricing, Inventory, Delivery & Lifecycle Information:

[Honeywell:](#)

[JM-1](#)