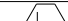
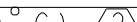




GENERAL OPERATING CHARACTERISTICS (ELECTRICAL PERFORMANCE AT 10.00 ±0.01 VDC EXCITATION, 25°C)																							
OPERATING PRESSURE RANGE (PSIG)				0 - 1 (A)			0 - 5 (B)			0 - 15 (C)			0 - 30 (D)				0 - 100 (F)			0 - 250 (G)			
	MIN	NOM	MAX	MIN	NOM	MAX	MIN	NOM	MAX	MIN	NOM	MAX	UNITS	MIN	NOM	MAX	MIN	NOM	MAX	MIN	NOM	MAX	UNITS
SPAN (P2>P1) 	14.7	16.7	18.7	47	50	53	97	100	103	97	100	103	mV	95	100	105	143	150	157				mV
NULL OFFSET	-1.5	0	+1.5	-1.5	0	+1.5	-1.5	0	+1.5	-1.5	0	+1.5	mV	-2.0	0	+2.0	-2.0	0	+2.0				mV
		TYP	MAX		TYP	MAX		TYP	MAX		TYP	MAX	UNITS		TYP	MAX		TYP	MAX		TYP	MAX	UNITS
LINEARITY (BFSL, P2>P1)		0.25	0.5		0.4	0.5		0.25	0.5		0.1	0.2	%SPAN		0.4	0.6		0.5	0.7				%SPAN
NULL SHIFT (0 TO 25°C, 25 TO 50°C) 		±0.5	±1.0		±0.5	±1.0		±0.5	±1.0		±0.75	±1.5	mV		±1.0	±2.0		±1.0	±2.0				mV
SPAN SHIFT (0 TO 25°C, 25 TO 50°C) P2>P1 		±1.0	±2.0		±1.0	±1.5		±0.75	±1.5		±0.75	±1.5	%SPAN		±0.5	±1.5		±0.5	±1.5				%SPAN
REPEATABILITY AND HYSTERESIS		±1.0			±0.2			±0.2			±0.2		%SPAN		±0.2			±0.2			±0.2		%SPAN
OVERPRESSURE (P2>P1; P1>P2)			20			20			45			60	PSI			200			500				PSI
ALL PRESSURE RANGES	MIN	NOM	MAX	UNITS																			
EXCITATION VOLTAGE	10			16	VDC																		
INPUT RESISTANCE	5.5K			7.5K	11.5K	OHMS																	
OUTPUT RESISTANCE	1.5K			2.5K	3.0K	OHMS																	
RESPONSE TIME				1.0	ms																		
TEMPERATURE RANGES																							
STORAGE	-55°C TO +100°C (-67°F TO +212°F)																						
OPERATE	-40°C TO +85°C (-40°F TO +185°F)																						
COMPENSATED	0 TO +50°C (+32°F TO +122°F)																						
OPERATE 	-20°C TO +85°C																						

NOTES

△ SPAN IS THE ALGEBRAIC DIFFERENCE BETWEEN OUTPUT AT MAXIMUM
 ^ RATED OPERATING PRESSURE AND OUTPUT AT 0 PSI

TEMPERATURE ERROR IS CALCULATED WITH RESPECT TO 25°C

3 - INPUT MEDIA LIMITED ONLY TO THOSE MATERIALS THAT WILL NOT ATTACK SILICON. THE HOUSING MATERIAL OR SEAL MATERIAL

4 - TERMINALS ARE PLATED FOR SOLDERING (LIMIT SOLDERING TO 315°C FOR 10 SECONDS MAXIMUM)

5 - PIN 1 IS IDENTIFIED BY NOTCH IN LEAD

6 - SENSOR IS OPERATIONAL OVER VACUUM PRESSURE RANGE
7 - RATIO METRIC TO SUPPLY VOLTAGE#
⑧ M5 THREADED PRODUCT:

RECOMMENDED TORQUE FOR SEALING: 4 IN-LBS

DO NOT EXCEED 6 IN-LBS OF TORQUE
SIZE 007 O-RING

O-RING COUNTERBORE DIMENSIONS:
 $\varnothing .300 \pm .003 \times \nabla .040$

9 1/4-28 UNF THREADED PRODUCT:
RECOMMENDED TORQUE FOR SEALING: 8 IN-LBS

DO NOT EXCEED 12 IN-LBS OF TORQUE
SIZE 009 O-RING

O-RING COUNTERBORE DIMENSIONS:
 $\varnothing .360 \pm .003 \times \nabla .040 \pm .002$

10 CATALOG LISTING AND DATE CODE HERE. ALTERNATE FORMAT OF
CATALOG LISTING BRAND IS THE ENTIRE CATALOG LISTING

FOR CATALOG LISTINGS WITH EPDM SEALS ONLY

26PC_F_2G

CATALOG LISTING	LASER BRAND/™
26PCAF A2G	6AF 2G
26PCDFA2G	6DF 2G
26PCDFB2G	6DF 2G
26PCBFA2G	6BF 2G
26PCCFA2G	6CF 2G
26PCBFB2G	6BF 2G
26PCCFB2G	6CF 2G
26PCBFC2G	6BF 2G
26PCCF J2G	6CF 2G
26PCCFK2G	6CF 2G
26PCAFH2G	6AF 2G
26PCAFK2G	6AF 2G
26PCAFC2G	6AF 2G
26PCFFH2G	6FF 2G
26PCBFK2G	6BF 2G
26PCFFA2G	6FF 2G
26PCAFD2G	6AF 2G
26PCGFA2G	6GF 2G
26PCAED2G	6AE 2G
26PCDED2G	6DE 2G
26PCAFB2G	6AF 2G
26PCFFB2G	6FF 2G
26PCFFM2G	6FF 2G
26PCBFD2G	6BF 2G
26PCCFD2G	6CF 2G
26PCGF J2G	6GF 2G
26PCBFS2G	6BF 2G
26PCGFB2G	6GF 2G
26PCCFH2G	6CF 2G

```

- STYLE
  (G) GAGE
- TERMINATION
  (2) 2 X 2 (FORMED)
- PORT

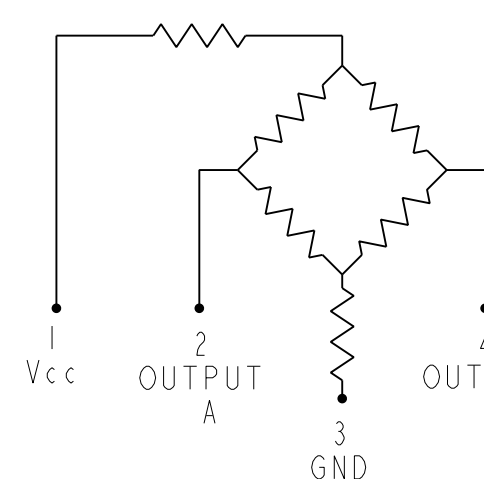
```

(A) STRAIGHT
 (B) BARB
 (C) LUER
 (D) MODULAR
 (H) 5 mm THREAD
 (I) 90° PORT
 (J) SMALL NEEDLE
 (K) -90°
 (M) 1/4-28 THD
 (S) MANIFOLD MOUNT
 — SEAL
 (F) FLUOROSILICONE
 (E) EPDM

— OPERATING PRESSURE

- (A) 1 PSI
- (B) 5 PSI
- (C) 15 PSI
- (D) 30 PSI
- (F) 100 PSI
- (G) 250 PSI

CIRCUIT DIAGRAM



OUTPUT "A"
INCREASES AS P2
PRESSURE INCREASES

OUTPUT "B"
DECREASES AS P2
PRESSURE INCREASES

METRIC	INCHES
0.38	.015
0.51	.020
0.76	.030
1.02	.040
1.3	.05
1.93	.076
2.0	.08
3.6	.14
5.1	.20
6.4	.25
7.9	.31
8.4	.33
8.9	.35
9.1	.36
9.7	.38
12.7	.50
15.2	.60
16.0	.63
16.3	.64
18.8	.74
20.4	.80
21.6	.85
21.8	.86
22.1	.87
23.9	.94
24.9	.98
26.7	1.05
27.9	1.10
28.2	1.11
30.2	1.19

THIRD ANGLE PROJECTION		
SCALE	3 : 1	
DO NOT SCALE PRINT		
UNLESS OTHERWISE SPECIFIED TOLERANCES ARE		
ONE PLACE	(.0)	+ .030
TWO PLACE	(.00)	+ .015
THREE PLACE	(.000)	+ .005
ANGLES		+ -
WEIGHT	2 07	

THIS DRAWING COVERS A PROPRIETARY ITEM AND IS THE PROPERTY OF MICRO SWITCH, A DIVISION OF HONEYWELL. THIS DRAWING IS NOT TO BE COPIED OR USED WITHOUT THE APPROVAL OF MICRO SWITCH.

FED. MFG. CODE 91929

MICRO SWITCH
a Honeywell Division

CATALOG LISTING

26PC SERIES CHART 3

BRIDGE PRESSURE SENSOR

ANSI Y14.5M-1982 APPLIES

Mouser Electronics

Authorized Distributor

Click to View Pricing, Inventory, Delivery & Lifecycle Information:

[Honeywell:](#)

[26PCBFS2G](#) [26PCAFK2G](#) [26PCBFB2G](#) [26PCCFB2G](#) [26PCCFJ2G](#) [26PCCFK2G](#) [26PCDFB2G](#) [26PCGFB2G](#)
[26PCAFB2G](#) [26PCFFB2G](#) [26PCBFK2G](#) [26PCGFJ2G](#) [26PCFFM2G](#)