

FED. MFR CODE 91929

CATALOG LISTING
2TP12 SERIES
CHART 1

CAT. LIST.

2 CIRCUIT MADE WITH
BUTTON DEPRESSED ON

OPPOSITE LUG	CENTER	LUG SIDE
(2-3, 5-6)	(1-2, 4-5)	(1-2, 4-5)

2 TP12-1	ON	OFF	ON
2 TP12-2	ON	NONE	OFF
2 TP12-3	ON	NONE	ON
2 TP12-21	ON	OFF	NONE

L191 15A 125, 250, 277 VAC
1/2HP 125 VAC
1HP 250, 277 VAC
5A 125 VAC "L"



2TP12-4	ON	NONE	MOM OFF
⑧	ON	OFF	MOM ON
2TP12-6	OFF	NONE	MOM ON
2TP12-7	MOM ON	OFF	MOM ON
2TP12-8	ON	NONE	MOM ON

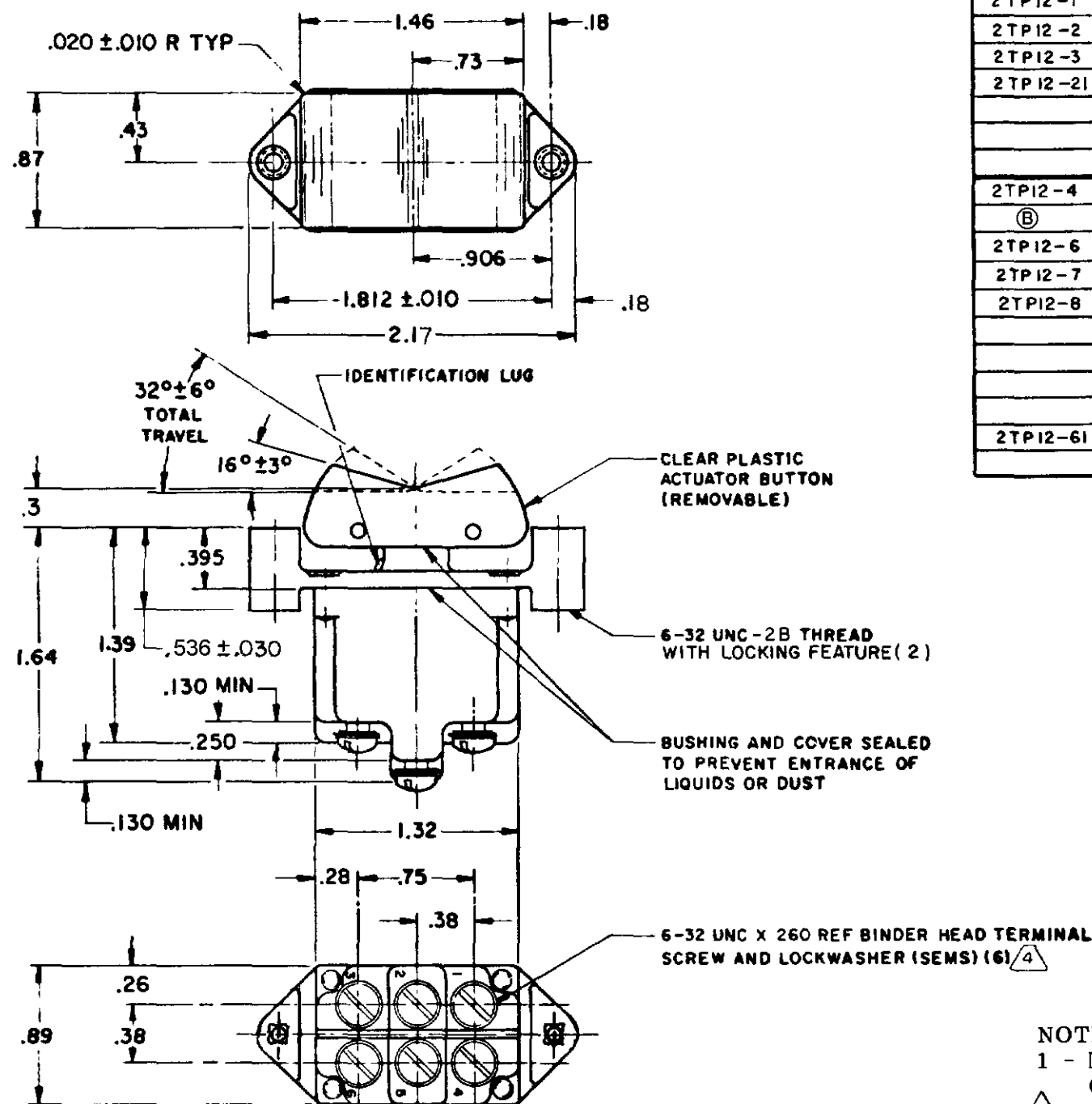
L192 10A 125, 250, 277 VAC
1/4HP 125 VAC,
1/2HP 250, 277 VAC
3A 125 VAC "L"



2TP12-61	NONE	OFF	MOM ON
----------	------	-----	--------

FO-50378 003
RASTER

田子



OF SWITCH
 2 APPLIES ONLY TO "ON" AND "MOMENTARY ON" POSITIONS
 3 - THESE SWITCHES WILL WITHSTAND TEMPERATURE OF 160°F
 4 SCREWS FURNISHED UNASSEMBLED

THIS DRAWING COVERS A PROPRIETARY ITEM AND IS THE PROPERTY OF MICRO SWITCH A DIVISION OF MINNEAPOLIS HONEYWELL REGULATOR CO THIS DRAWING IS NOT TO BE COPIED OR USED WITHOUT THE APPROVAL OF MICRO SWITCH

SCALE - FULL

CONTACT ARRANGEMENT

DO NOT SCALE PRINT

UNLESS OTHERWISE
SPECIFIED
DIMENSIONS ARE IN INCHES
TOLERANCES ARE

ONE PLACE	(0)	±.030
TWO PLACE	(00)	±.015
THREE PLACE	(000)	±.005
ANGLES		±

WEIGHT 141 B EST

Mouser Electronics

Authorized Distributor

Click to View Pricing, Inventory, Delivery & Lifecycle Information:

[Honeywell:](#)

[2TP12-1](#) [2TP12-2](#) [2TP12-21](#) [2TP12-3](#) [2TP12-7](#) [2TP12-8](#)