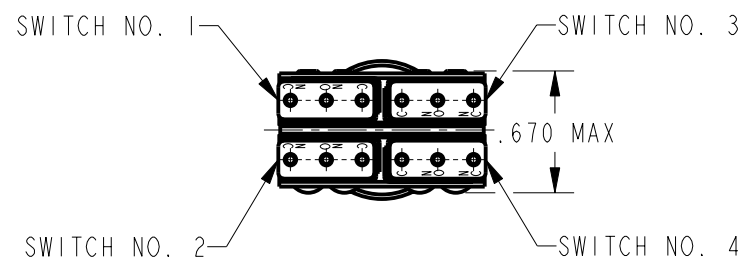
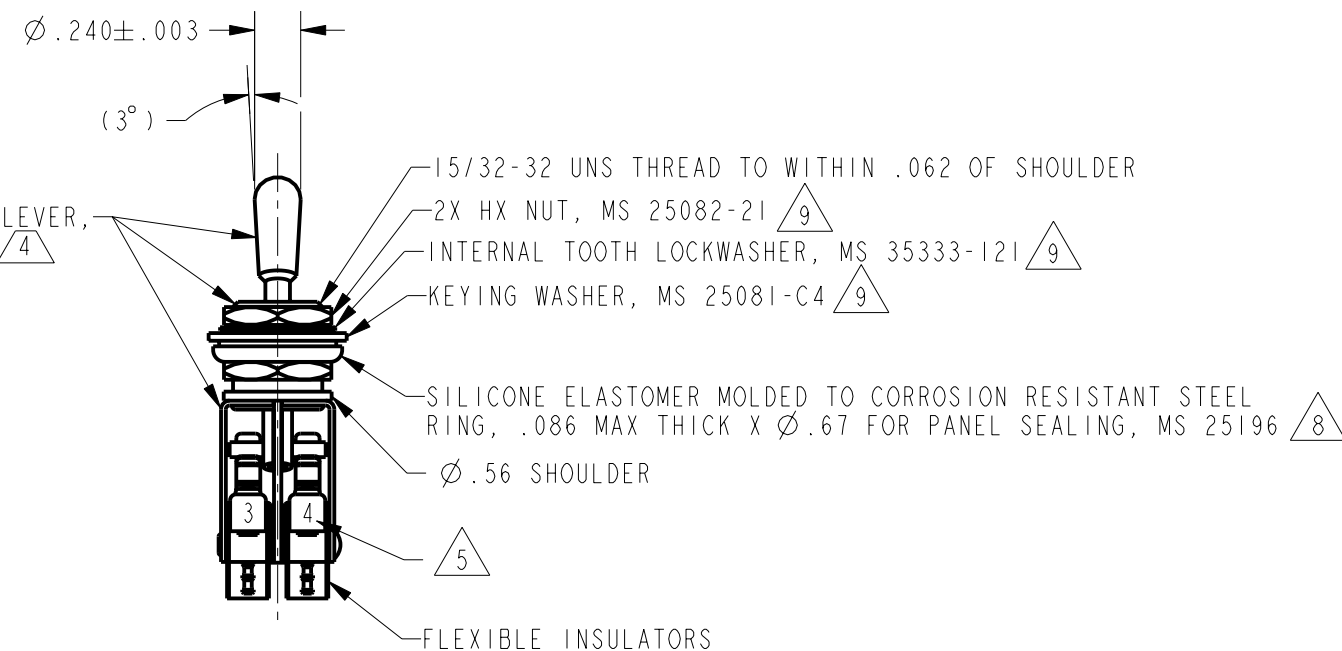


FED. MFG. CODE 91929

CATALOG LISTING

CATALOG LISTING	KEYWAY POSITION		CENTER POSITION		OPPOSITE KEY-WAY POSITION	
	C-NC	C-NO	C-NO	C-NC	C-NC	C-NO
64AT303-1	1,2	3,4	NONE	ALL	3,4	1,2
64AT303-3	1,2	3,4	NONE	NONE	3,4	1,2
64AT303-5	1,2 ‡	3,4 ‡	NONE	ALL	3,4	1,2
64AT303-7	1,2 ‡	3,4 ‡	NONE	ALL	3,4 ‡	1,2 ‡
* ASTERIK DENOTES MOMENTARY POSITION						

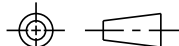


NOTES

- NOTES
- 1 - UNIT INCLUDES 4X "SX" TYPE, BASIC SWITCHES (MEETS REQUIREMENTS OF MIL-S-8805/4)
 - 2 - SWITCHES DO NOT NECESSARILY OPERATE SIMULTANEOUSLY
 - 3 - TERMINALS ARE PLATED FOR SOLDERING
 - 4 - DULL FINISH ON LEVER AND BUSHING
 - 5 - SWITCH NUMBERS MARKED ON END OF BASIC SWITCHES
 - 6 - TERMINAL DESIGNATION STAMPED ON BOTH SIDES OF UNIT
 - 7 - WHEN LEVER IS MOVED OUT OF A MAINTAINED POSITION, IT WILL RETURN OF ITS OWN ACCORD TO THE ORIGINAL POSITION OR THE ADJACENT POSITION. THE TOGGLE LEVER MAY HANG UP BETWEEN THE TWO ADJACENT POSITIONS ONLY BY EXERTING CONSIDERABLE FORCE
 - 8 - FOR PANEL SEAL TO BE EFFECTIVE, MOUNTING HOLE IN PANEL SHOULD}} NOT EXCEED $\varnothing .500$
 - 9 - HARDWARE FURNISHED ASSEMBLED WITH SWITCH OR IN PACKET PER MIL-PRF-8805
 - 10 - REPLACEMENT MOUNTING HARDWARE PACKET 15PA314-AT
- 125 M

THIS DRAWING COVERS A PROPRIETARY ITEM AND IS THE PROPERTY OF MICRO SWITCH, A DIVISION OF HONEYWELL. THIS DRAWING IS NOT TO BE COPIED OR USED WITHOUT THE APPROVAL OF MICRO SWITCH

THIRD ANGLE PROJECTION



CHARACTERISTICS

ELECTRICAL DATA

SCALE	FULL
-------	------

OPERATING FORCE

CONTACT ARRANGEMENT
4X S P D T

FORCE TO MOVE LEVER FROM ONE
POSITION TO ANY ADJACENT POSITION
1-5 LB APPLIED
.125±.030 BELOW TOP OF LEVER

ELECTRICAL RATINGS

50 000 FT

LOAD

28 V

115 Vac, 60 Hz

28 Vdc

RESISTIVE

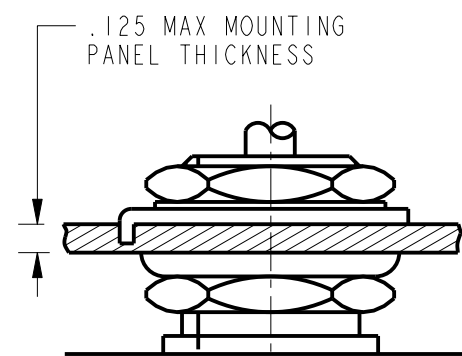
	7
--	---

	7
--	---

4

WEIGHT .07 LB EST

ANSI Y14.5M-1982 APPLIES



MOUNTING PANEL DETAIL

Mouser Electronics

Authorized Distributor

Click to View Pricing, Inventory, Delivery & Lifecycle Information:

[Honeywell:](#)

[64AT303-3](#) [64AT303-7](#)