

MICRO SWITCH

A DIVISION OF MINNEAPOLIS-HONEYWELL REGULATOR COMPANY
PRAIRIE RIDGE, ILLINOIS

FED MFR CODE 91929

ACTUATOR-SWITCH

CATALOG LISTING

JE-1

(M) JE-1
ISSUE 1

REPLACES

RELEASE NO

CHECK

CHECK

CHECK

CHECK

CHECK

CHECK

CHECK

CHECK

CHECK

CHECK

CHECK

CHECK

CHECK

CHECK

CHECK

CHECK

CHECK

CHECK

JE-1

M

DRAWING
NUMBER

ISSUE

2

5

17

18

19

20

21

22

23

24

25

26

27

28

29

30

31

32

33

34

35

36

37

38

39

40

41

42

43

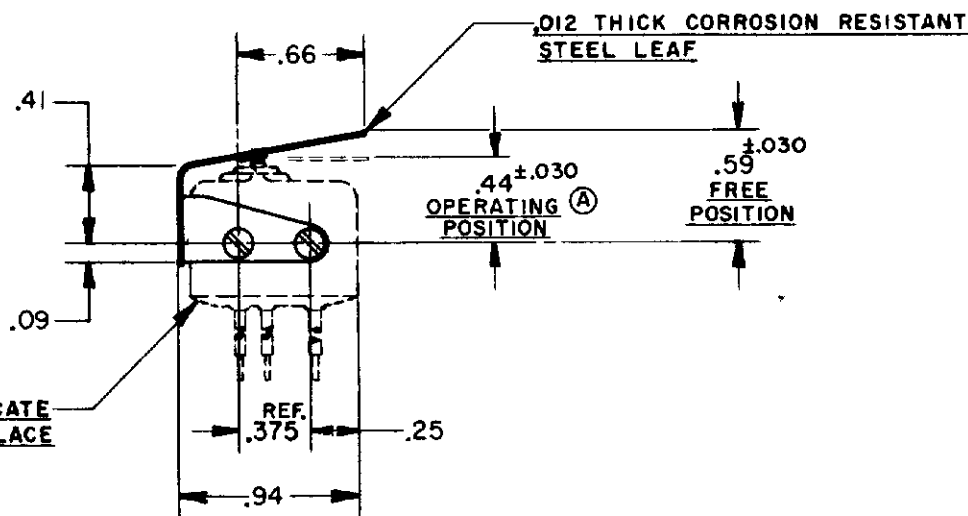
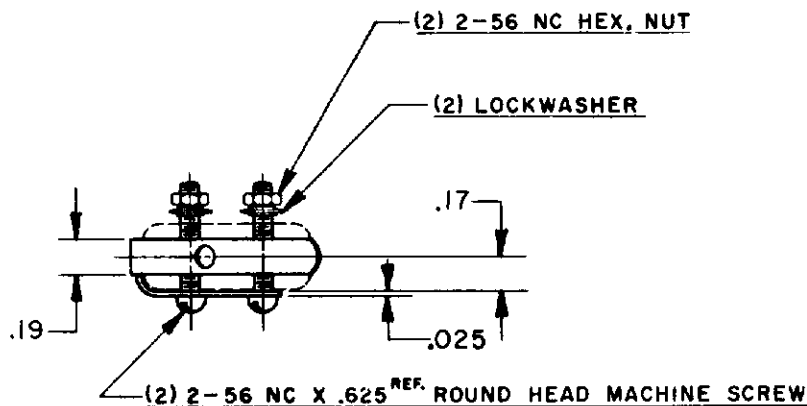
44

45

46

47

48



DOTTED LINES INDICATE
BASIC SWITCH IN PLACE

NOTE -

1- SCREWS, NUTS, AND LOCKWASHERS FURNISHED UNASSEMBLED.

THIS DRAWING COVERS A PROPRIETARY ITEM AND IS THE PROPERTY OF MICRO SWITCH A DIVISION OF HONEYWELL THIS DRAWING IS NOT TO BE COPIED OR USED WITHOUT THE APPROVAL OF MICRO SWITCH

CHARACTERISTICS (WITH ISEI) (A)

OPERATING FORCE ----- 12 OZ. MAX.

RELEASE FORCE ----- 2 OZ. MIN.

DIFFERENTIAL TRAVEL ----- .025 MAX.

OVERTRAVEL ----- .015 MIN.

ELECTRICAL DATA

CONTACT ARRANGEMENT

BREAK DISTANCE

SCALE - FULL

DO NOT SCALE PRINT

UNLESS OTHERWISE
SPECIFIED
DIMENSIONS ARE IN INCHES
TOLERANCES ARE:

ONE PLACE	(.0)	± .030
TWO PLACE	(.00)	± .015
THREE PLACE	(.000)	± .005
ANGLES		±

WEIGHT

Mouser Electronics

Authorized Distributor

Click to View Pricing, Inventory, Delivery & Lifecycle Information:

[Honeywell:](#)

[JE-1](#)