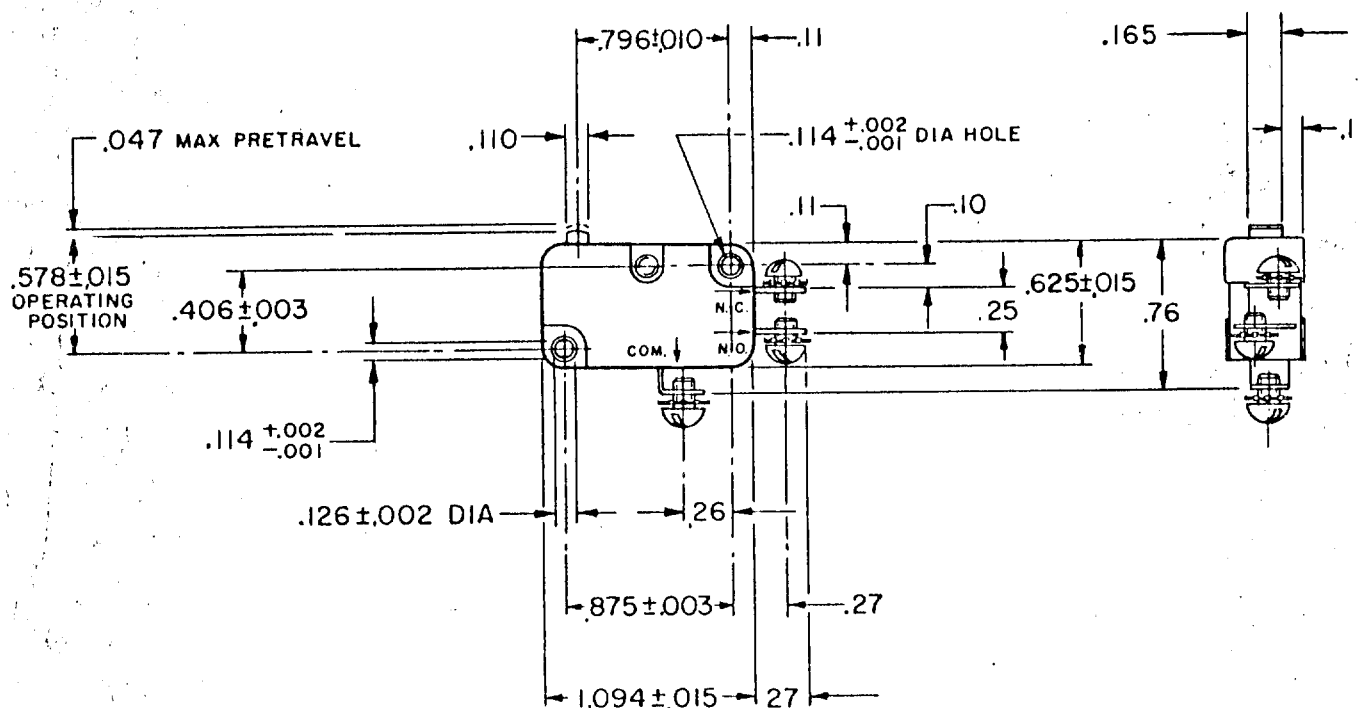
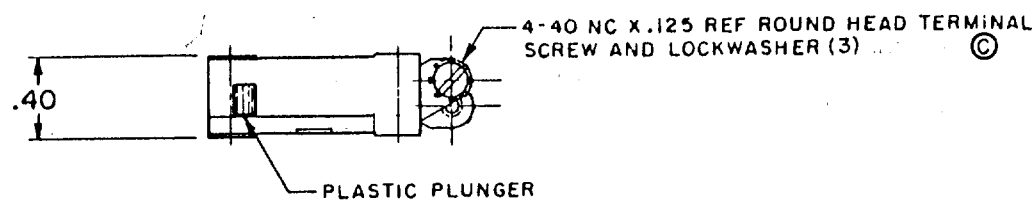


**MICRO SWITCH**FREEPORT, ILLINOIS, U.S.A.
A DIVISION OF HONEYWELL

FED. MFG. CODE 91929

SWITCH-BASIC**V 3-1****CK-A0100****5**

THIS DRAWING COVERS A PROPRIETARY ITEM AND IS THE PROPERTY OF MICRO SWITCH, A DIVISION OF HONEYWELL. THIS DRAWING IS NOT TO BE COPIED OR USED WITHOUT THE APPROVAL OF MICRO SWITCH.

CHARACTERISTICS

OPERATING FORCE — — — 6-14 OZ

RELEASE FORCE — — — 4 OZ MIN

DIFFERENTIAL TRAVEL — — .006 — .016

OVERTRAVEL — — — .040 MIN

FREE POSITION — — — .625 MAX

RELEASE TRAVEL — — — .007 MIN

ELECTRICAL DATACONTACT ARRANGEMENT
S P D T

L83

15.1A 1/2HP 125 OR 250 VAC

1/2A 125 VDC, 1/4A 250 VDC

5A 125 VAC "L"

**SCALE FULL**

DO NOT SCALE PRINT

UNLESS OTHERWISE NOTED

DIMENSIONS ARE IN INCHES

TOLERANCES ARE:

ONE PLACE (.0) ± .030

TWO PLACE (.00) ± .015

THREE PLACE (.000) ± .005

ANGLES ±

WEIGHT .017 LB

REPLACES

RELEASE NO.

DRAWING NUMBER

CHECK PFK

CHECK PFK

CHECK PFK

CHECK PFK

CHECK PFK

CHECK PFK

CHECK PFK

CHECK PFK

CHECK PFK

CHECK PFK

CHECK PFK

CHECK PFK

CHECK PFK

DRAWN

M B F

FC-50378

Mouser Electronics

Authorized Distributor

Click to View Pricing, Inventory, Delivery & Lifecycle Information:

[Honeywell:](#)

[V3-1](#)