

MICRO SWITCH

A DIVISION OF MINNEAPOLIS-HONEYWELL REGULATOR COMPANY

POMFRET, MINNESOTA

FED. MFR. CODE 91929

SWITCH-BASIC

CATALOG LISTING

MT-4RL-A28

MT-4RL-A28

M

DRAWING
NUMBER

11

ISSUE

REPLACES

RELEASE NO.

CHECK

REVISIONS

A C082254

JAK
16 JAN 96

CHECK

57

7 AUG 57

CHECK

57

CHECK

57

CHECK

57

CHECK

57

CHECK

57

CHECK

57

CHECK

57

CHECK

57

CHECK

57

CHECK

57

CHECK

57

CHECK

57

CHECK

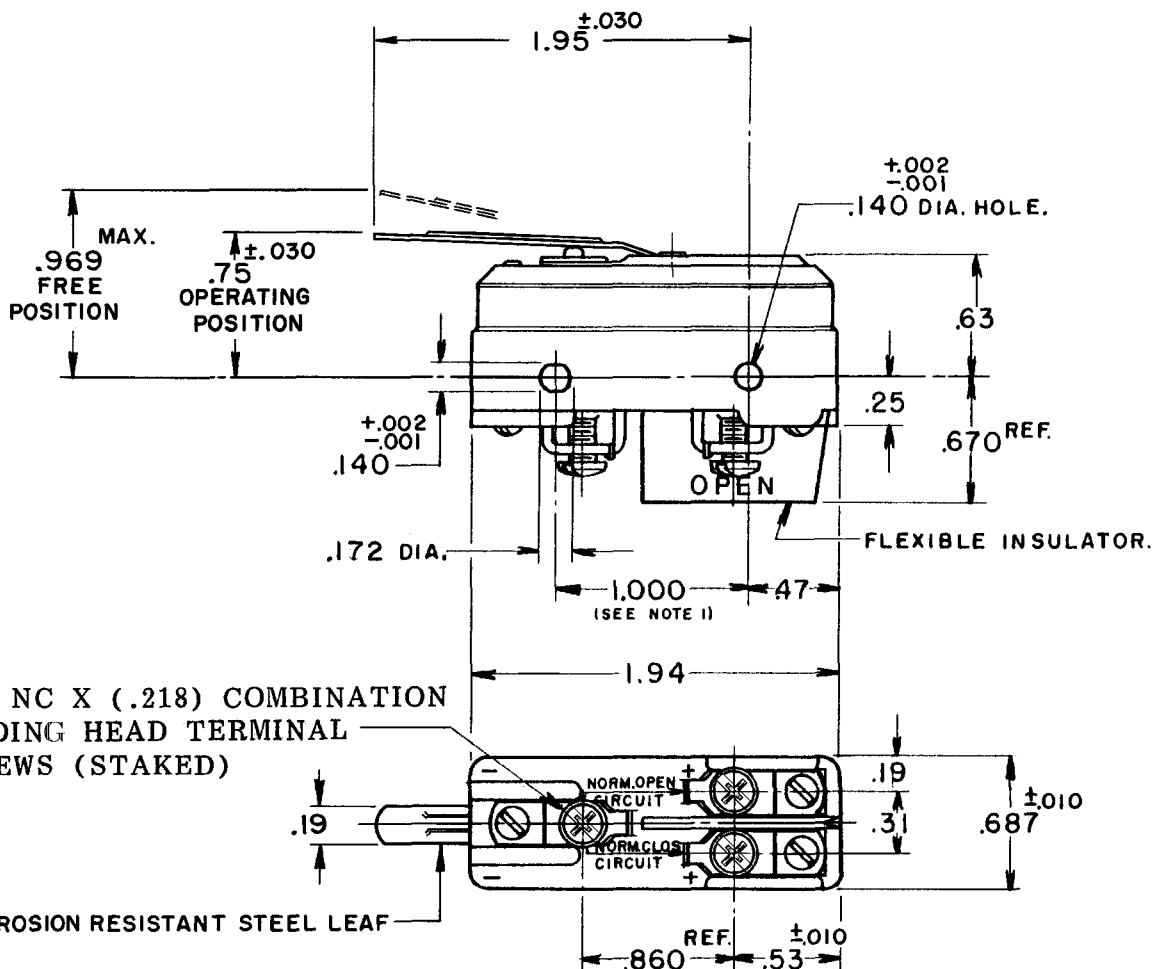
57

CHECK

57

CHECK

57



NOTE

- 1- MOUNTING HOLES WILL ACCEPT PINS OR SCREWS OF .139 MAX. DIA. ON 1.000^{±.002} CENTERS.
- 2- FOR BEST RESULTS EITHER POLARIZE THE SWITCH WITH THE COMMON TERMINAL WIRED IN NEGATIVE POLARITY OR MOUNT THE SWITCH WITH BRASS SCREWS AND SPACE AT LEAST .250 AWAY FROM MAGNETIC MATERIALS.

THIS DRAWING COVERS A PROPRIETARY ITEM AND IS THE PROPERTY OF MICRO SWITCH, A DIVISION OF HONEYWELL. THIS DRAWING IS NOT TO BE COPIED OR USED WITHOUT THE APPROVAL OF MICRO SWITCH.

CHARACTERISTICS

OPERATING FORCE-----12 OZ. MAX.

RELEASE FORCE-----1 OZ. MIN.

DO NOT OVERTRAVEL MORE THAN .060

ELECTRICAL DATA

CONTACT ARRANGEMENT
S. P. D. T.

NON-POLARIZED	VOLTS D-C 125 250	MOTOR 1/4 HP + —	RESISTIVE 10 AMPS 1.5 TO 3.0*
POLARIZED OR NON-MAGNETICALLY MOUNTED	VOLTS D-C 125 250	MOTOR 1/2 HP + —	RESISTIVE 10 AMPS 1.5 TO 3.0*

* NOT SUITABLE FOR USE AT LESS THAN 1.5 AMPS
+ WILL NOT BREAK LOCKED ROTOR CURRENT

UL LISTED—FILE NO. 12252
(NON-POLARIZED); 3A 250 VAC-DC; 10A 125 VAC-DC;
CODE L210 1/4 HP 125 VAC-DC

SCALE FULL

DO NOT SCALE PRINT

UNLESS OTHERWISE
SPECIFIED
DIMENSIONS ARE IN INCHES
TOLERANCES ARE:

ONE PLACE	(.0)	±.030
TWO PLACE	(.00)	±.015
THREE PLACE	(.000)	±.005
ANGLES		±

WEIGHT

FORMTEK

DRAWN

O.M.W.

6 AUG.

Mouser Electronics

Authorized Distributor

Click to View Pricing, Inventory, Delivery & Lifecycle Information:

[Honeywell:](#)

[MT-4RL-A28](#)