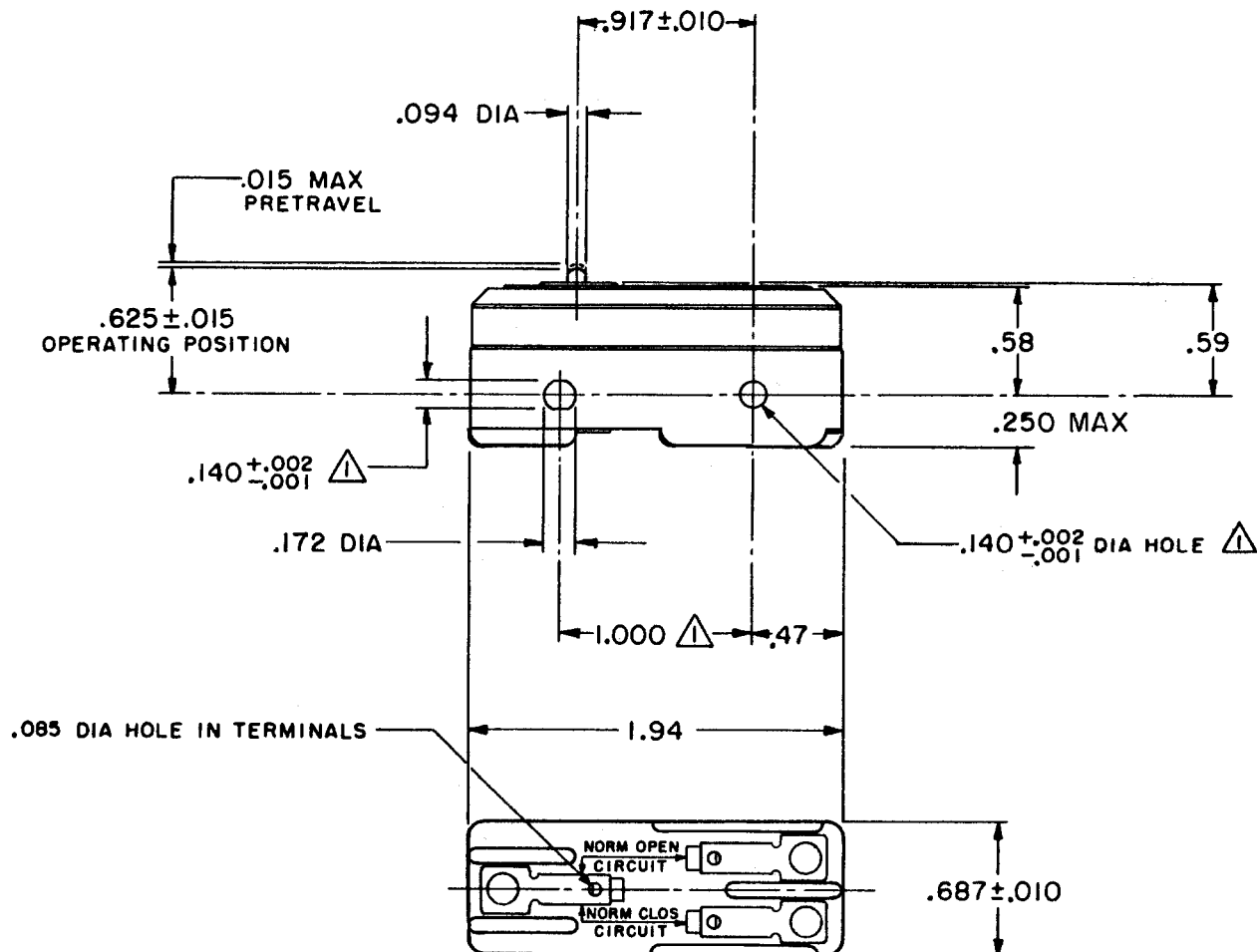


**MICRO SWITCH**FREEPORT ILLINOIS  
A DIVISION OF HONEYWELL

FED. MFG. CODE 91929

**SWITCH - BASIC**

CATALOG LISTING

**BZ-2R**

NOTE  
 MOUNTING HOLES WILL ACCEPT PINS OR SCREWS  
 OF .139 MAX DIA ON 1.000 ± .002 CENTERS

THIS DRAWING COVERS A PROPRIETARY ITEM AND IS THE PROPERTY OF MICRO SWITCH, A DIVISION OF MINNEAPOLIS-HONEYWELL REGULATOR CO. THIS DRAWING IS NOT TO BE COPIED OR USED WITHOUT THE APPROVAL OF MICRO SWITCH.

**CHARACTERISTICS**

OPERATING FORCE ----- 9 - 13 OZ

RELEASE FORCE ----- 4 OZ MIN

DIFFERENTIAL TRAVEL ---- .0004-.0020

OVERTRAVEL ----- .005 MIN

**ELECTRICAL DATA**CONTACT ARRANGEMENT  
S P D T

UNDERWRITERS' LAB. INC. LISTED RATING  
 15A-125, 250 OR 480 VAC, 2A-600 VAC  
 -L74- 1/8HP-125 VAC; 1/4HP-250 VAC  
 1/2A-125 VDC; 1/4A-250 VDC

-L288-  
 -L299-  
 -L306-



16A 250V ~ T85 5E4

**SCALE FULL**

DO NOT SCALE PRINT

UNLESS OTHERWISE  
 SPECIFIED  
 DIMENSIONS ARE IN INCHES  
**TOLERANCES ARE:**

ONE PLACE (.0) ±.030  
 TWO PLACE (.00) ±.015  
 THREE PLACE (.000) ±.005  
 ANGLES ±

WEIGHT .050 LB

**BZ-2R**

PAGE 1 OF 1

**M**DRAWING  
NUMBERISSUE  
16

REPLACES

RELEASE NO.

CHECK

**REVISIONS**

A CO17410

G C H

18 MAR 63

B CO31092

R C B

30 SEPT 72

C CO46304

J A P

12 OCT 79

D 58037

SMA

1 OCT 85

E CO78874

DLT

17 NOV 94

F CO93346

DLT

1 SEP 98

G CO-

84234

LJK

8 MAR 99

CHECK

CHECK

CHECK

CHECK

CHECK

CHECK

CHECK

CHECK

**FORMTEK**

FO-80378

DRAWN

G C H

18 MAR 63

26 MAR 63

# Mouser Electronics

Authorized Distributor

Click to View Pricing, Inventory, Delivery & Lifecycle Information:

[Honeywell:](#)

[BZ-2R](#)