

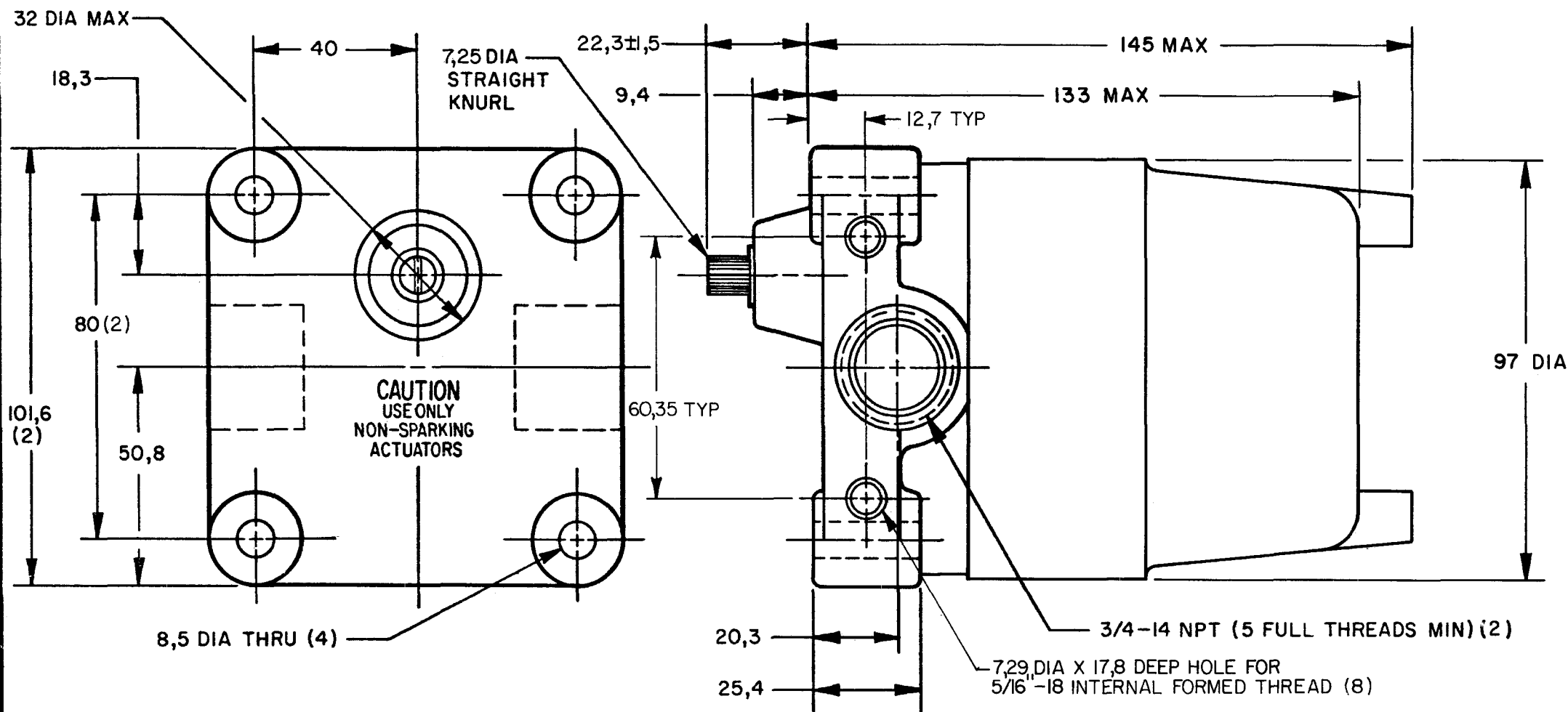
MICRO SWITCH
FREEPORT ILLINOIS, U.S.A.
A DIVISION OF HONEYWELL
FED. MFG. CODE 81929

SWITCH-ENCLOSED

CATALOG LISTING
21CX 22CX
SERIES CHART 2

CONVERSION CHART

7,25	.285
7,29	.287
7,92	.312
8,5	.33
9,4	.37
12,7	.50
17,8	.70
18,3	.72
20,3	.80
22,3±1,5	.880±.059
25,4	1.00
32,0	1.26
40,0	1.57
50,8	2.00
60,35	2.38
80,0	3.15
97,0	3.82
101,6	4.00
133,0	5.24
145,0	5.71
0,5 Nm	.3 PF
1,25 Kg	2.75 LB



NOTES

- 1 - EXPLOSION PROOF-UNDERWRITERS LAB INC LISTING FOR HAZARDOUS LOCATIONS CLASS I, GROUPS C AND D; CLASS II, GROUPS E, F AND G
- 2 - ALUMINUM ENCLOSURE FINISHED WITH BLUE AND BLACK EPOXY PAINT
- 3 - 6-32 UNC X 7,92 REF PAN HEAD TERMINAL SCREW AND LOCK-WASHER (SEMS TERMI-LOX) (3 PER BASIC)
- 4 - CAMS MAY BE REPOSITIONED IN 7°20' INCREMENTS
- 5 - FOR USE IN TEMPERATURES UP TO 85° C
- 6 - UNIT PROVIDES NO SHAFT RESTORING FORCE, THE ACTUATING DEVICE MUST CONTROL MOVEMENT OF SHAFT
- 7 - SEE (M) 7CX CHART 1 AND 2 FOR LEVER ACTUATORS

THIS DRAWING COVERS A PROPRIETARY ITEM AND IS THE PROPERTY OF MICRO SWITCH, A DIVISION OF HONEYWELL. THIS DRAWING IS NOT TO BE COPIED OR USED WITHOUT THE APPROVAL OF MICRO SWITCH.

THIRD ANGLE PROJECTION

SCALE 3/4 TO 1

DO NOT SCALE PRINT

TOLERANCES

APPLY TO DESIGN UNITS. CONVERSIONS ARE ONLY FOR REFERENCE. UNLESS NOTED, TOLERANCES ARE ±

DIM. TOL. DIM. TOL.

NO PLACES X 1/04 X X 0,01/016 X X 0,01/016

ONE PLACE X,X 0,01/016 X,X 0,01/016

TWO PLACES X,XX 0,01/016 X,XX 0,01/016

THREE PLACES X,XXX 0,01/016 X,XXX 0,01/016

ANGLES

DESIGN UNITS SI METRIC US CUSTOMARY

RAW MATERIAL-COMMERCIAL STANDARD

MICRO SWITCH STANDARDS APPLY

DIMENSIONS ARE TO BE MET BEFORE PROTECTIVE COATINGS ARE APPLIED

WEIGHT 1.25 Kg APPROX

CHARACTERISTICS	21CX	22CX
OPERATING FORCE ---	0,50 Nm MAX	0,50Nm MAX
PRETRAVEL ---	15° MAX	15° MAX
DIFFERENTIAL TRAVEL ---	10° MAX	10° MAX
OVERTRAVEL ---	90° MIN	90° MIN

CONTACT ARRANGEMENT
S P D T
(EACH BASIC)

CAT. LIST	DESCRIPTION	ELECTRICAL DATA
21CX13-	3 BASICS; EACH OPERATES CLOCKWISE & COUNTER CLOCKWISE	UL LISTED-FILE E-14274 CODE L96 15A-125, 250 OR 480 VAC 1/8 HP-125 VAC; 1/4 HP-250 VAC 1/2 A-125 VDC; 1/4 A-250 VDC
21CX14-	4 BASICS; EACH OPERATES CLOCKWISE & COUNTER CLOCKWISE	
21CX16-	4 BASICS; 2 OPERATE CW ONLY; 2 OPERATE COUNTER CLOCKWISE ONLY	
21CX12	2 BASICS; EACH OPERATES CLOCKWISE & COUNTER CLOCKWISE	
21CX12F	2 BASICS; EACH OPERATED CLOCKWISE & COUNTERCLOCKWISE - TWO ADDITIONAL CAMS PROVIDE DETENT ACTION	
(C)	3 BASICS; EACH OPERATES CLOCKWISE & COUNTER CLOCKWISE	UL LISTED-FILE E14274 CODE L23 20A-125, 250 OR 480 VAC 10A-125 VAC "L" 1HP-125 VAC; 2HP-250 VAC 1/2A-125 VDC; 1/4A-250 VDC

Mouser Electronics

Authorized Distributor

Click to View Pricing, Inventory, Delivery & Lifecycle Information:

[Honeywell:](#)

[21CX12](#) [21CX13](#) [21CX14](#) [21CX16](#) [21CX12F](#)