

MICRO SWITCH
FREEPORT, ILLINOIS, U.S.A.
A DIVISION OF HONEYWELL
FED. MFG. CODE 91929

SWITCH-ENCLOSED

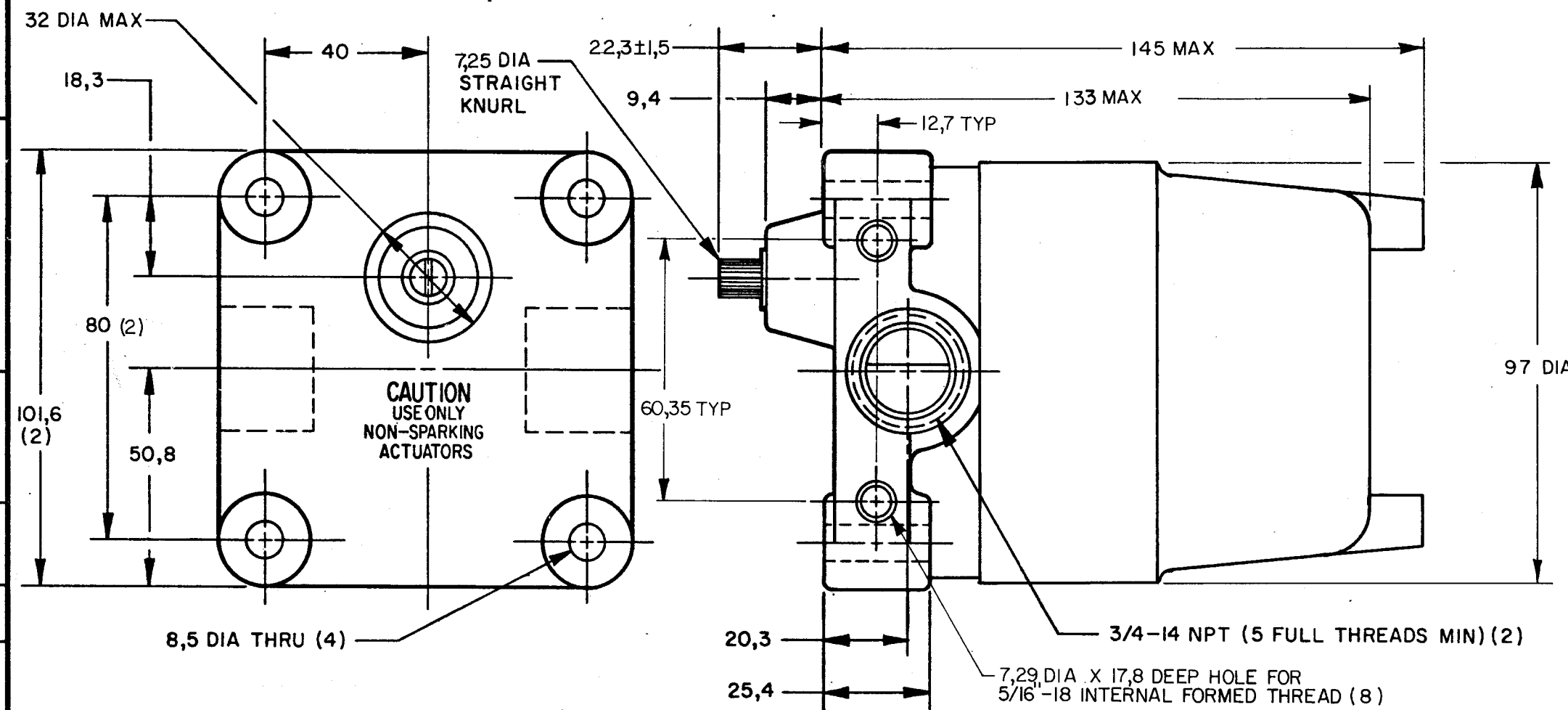
CATALOG LISTING
26CX
SERIES CHT 2

CONVERSION CHART

5,55	.219
7,25	.285
7,29	.287
8,5	.33
9,4	.37
12,7	.50
17,8	.70
18,3	.72
20,3	.80
22,3±1,5	.880±.059
25,4	1.00
32,0	1.26
40,0	1.57
50,8	2.00
60,35	2.38
80,0	3.15
97,0	3.82
101,6	4.00
133,0	5.24
145,0	5.71
0,5 Nm	.3 PF
1.25 Kg	2.75 LB

26CX
SERIES CHT 2
DRAWING NUMBER
9
ISSUE

RELEASE NO. PR-7450
REPLACES



CAUTION
USE ONLY
NON-SPARKING
ACTUATORS

NOTES

- 1 - EXPLOSION PROOF-UNDERWRITERS LAB INC LISTING FOR HAZARDOUS LOCATIONS CLASS I, GROUPS B, C, AND D; CLASS II, GROUPS E, F, AND G
- 2 - ALUMINUM ENCLOSURE FINISHED WITH BLUE AND BLACK EPOXY PAINT
- 3 - 6-32 UNC X 5,55 REF BINDING HEAD TERMINAL SCREW AND CUP WASHER (3 PER BASIC)
- 4 - CAMS MAY BE REPOSITIONED IN 7°20' INCREMENTS
- 5 - FOR USE IN TEMPERATURES UP TO 85°C
- 6 UNIT PROVIDES NO SHAFT RESTORING FORCE, THE ACTUATING DEVICE MUST CONTROL MOVEMENT OF SHAFT
- 7 SEE (M) 7CX CHART 1 AND 2 FOR LEVER ACTUATORS

THIS DRAWING COVERS A PROPRIETARY ITEM AND IS THE PROPERTY OF MICRO SWITCH, A DIVISION OF HONEYWELL. THIS DRAWING IS NOT TO BE COPIED OR USED WITHOUT THE APPROVAL OF MICRO SWITCH.

THIRD ANGLE PROJECTION

SCALE 3/4 TO 1

DO NOT SCALE PRINT

TOLERANCES
APPLY TO DESIGN UNITS. CONVERSIONS ARE ONLY FOR REFERENCE. UNLESS NOTED, TOLERANCES ARE 2

DIM.	TOL.	DIM.	TOL.
mm	mm/in	in	mm/in
NO PLACES	±	1/64	±
ONE PLACE	±.X	0,01/0,16	±.X
TWO PLACES	±.XX	0,01/0,008	±.XX
THREE PLACES	±.XXX	0,01/0,005	±.XXX
ANGLES			

SI METRIC US CUSTOMARY

DESIGN UNITS

RAW MATERIAL-COMMERCIAL STANDARD
MICRO SWITCH STANDARDS APPLY

DIMENSIONS ARE TO BE MET BEFORE
PROTECTIVE COATINGS ARE APPLIED

WEIGHT 1,25 Kg APPROX

CHARACTERISTICS 26CX

OPERATING FORCE --- 0,50 Nm MAX

PRETRAVEL --- 30° MAX

DIFFERENTIAL TRAVEL --- 20° MAX

OVERTRAVEL --- 75° MIN

CONTACT ARRANGEMENT
S P D T
(EACH BASIC)

CAT. LIST.	DESCRIPTION	ELECTRICAL DATA
26CX16	4 BASICS; 2 OPERATE CW ONLY; 2 OPERATE COUNTER CLOCKWISE ONLY	UL LISTED-FILE E14274 CODE L22 1A-125 VAC
26CX14	4 BASICS; EACH OPERATES CLOCKWISE AND COUNTER CLOCKWISE	

Mouser Electronics

Authorized Distributor

Click to View Pricing, Inventory, Delivery & Lifecycle Information:

[Honeywell:](#)

[26CX14](#) [26CX16](#)