

CATALOG LISTING

1LS9-L

PAGE 1 OF 1

REPLACES

PR-18229

RELEASE NO.

CHECK

REVISIONS

A

CO-76997

GJW

30 MAR 95

CHECK

15 APR 90

CHECK

16 APR 90

DRAWN

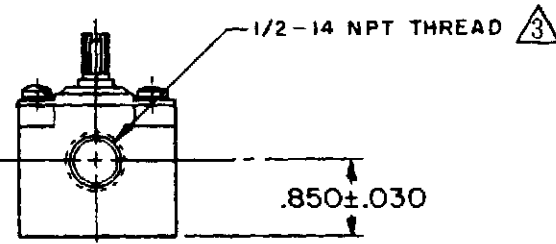
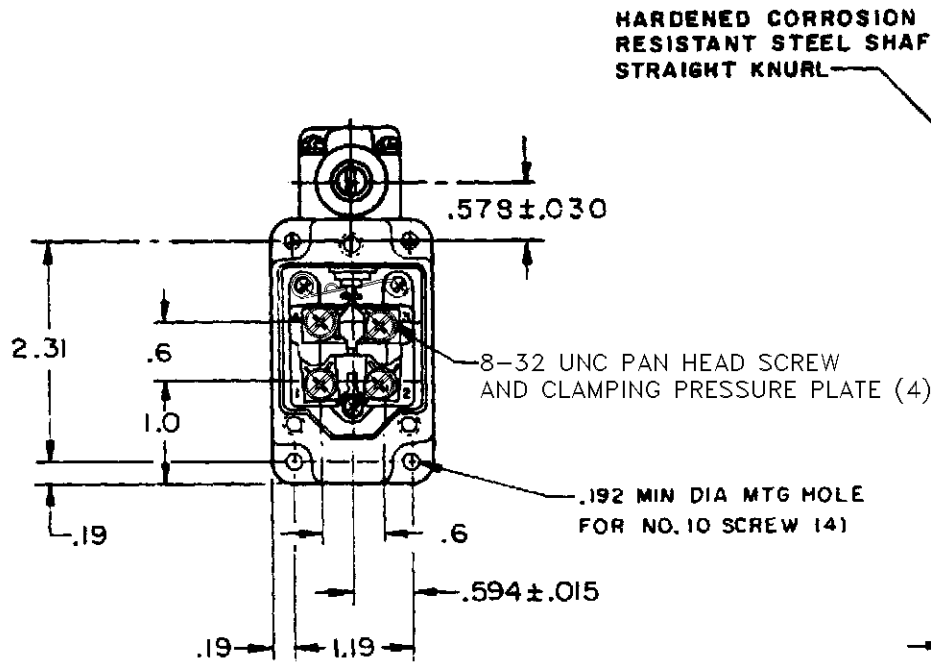
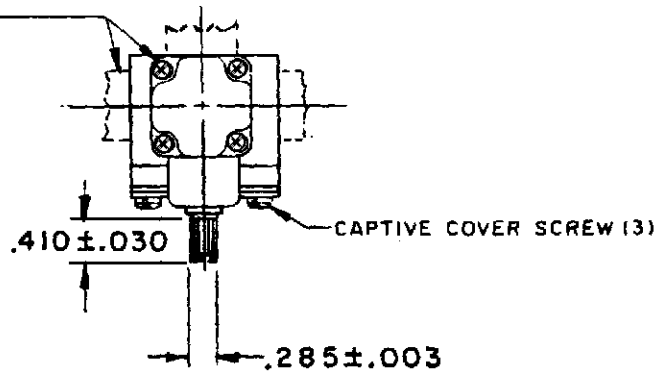
FORMTEK

**MICRO SWITCH**  
a Honeywell Division  
FED. MFG. CODE 91929

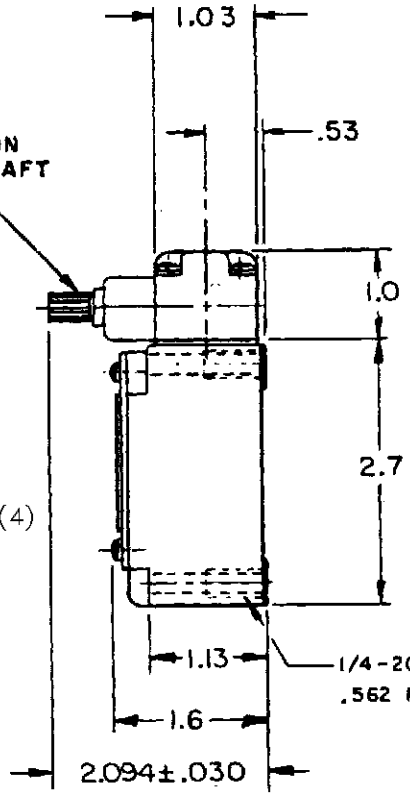
**SWITCH-ENCLOSED**

CATALOG LISTING  
**1LS9-L**

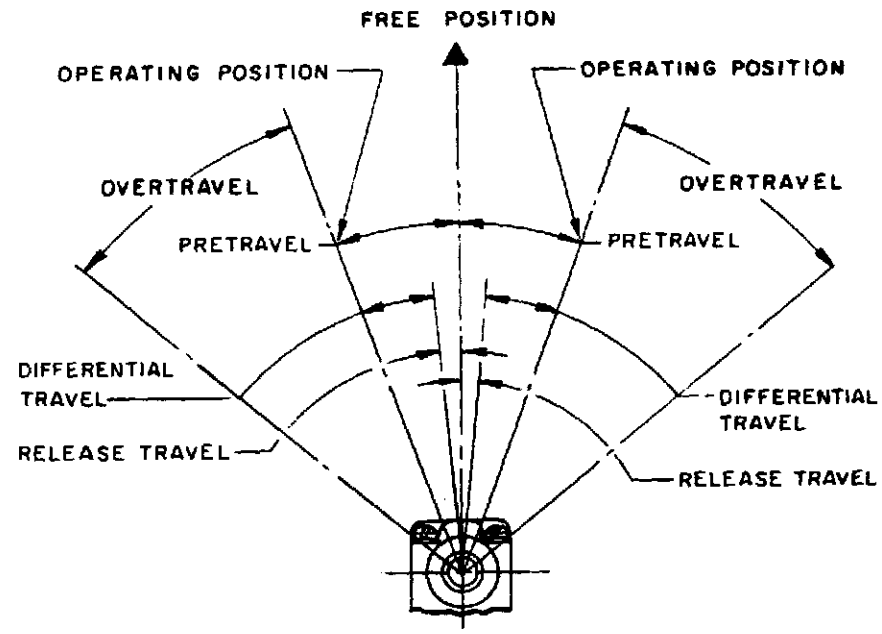
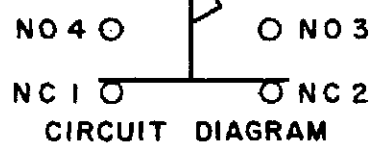
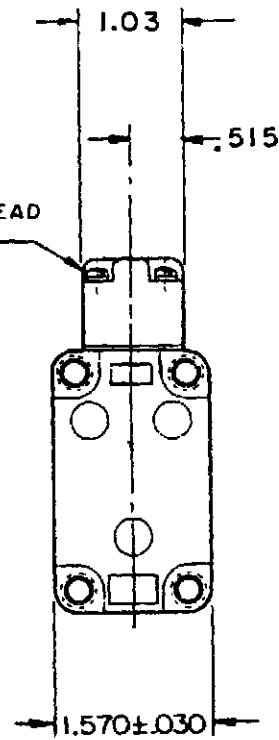
OPERATING HEAD MOUNTS  
IN ANY OF FOUR  
POSITIONS



HARDENED CORROSION  
RESISTANT STEEL SHAFT  
STRAIGHT KNURL



CAPTIVE HEAD  
SCREW (4)



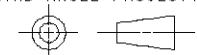
- NOTES
- 1 - SWITCH IS ASSEMBLED FOR ACTUATION IN EITHER DIRECTION BUT MAY BE ADJUSTED TO ACTUATE THE SWITCH IN THE CLOCKWISE DIRECTION ONLY, THE COUNTERCLOCKWISE DIRECTION ONLY, OR IN BOTH DIRECTIONS
  - 2 - TO CONVERT SWITCH FOR ACTUATION IN EITHER THE CLOCKWISE OR COUNTERCLOCKWISE DIRECTION ONLY, REMOVE ACTUATOR HEAD AND ROTATE THE NOTCHED PLUNGER 90° TO THE RIGHT FOR CLOCKWISE ACTUATION OR 90° TO THE LEFT FOR COUNTERCLOCKWISE ACTUATION
- (3) SEAL TO BE FURNISHED BY USER

THIS DRAWING COVERS A PROPRIETARY ITEM AND IS THE PROPERTY OF MICRO SWITCH, A DIVISION OF HONEYWELL. THIS DRAWING IS NOT TO BE COPIED OR USED WITHOUT THE APPROVAL OF MICRO SWITCH

CHARACTERISTICS	ELECTRICAL DATA
OPERATING TORQUE --- 4 1/2 IN LB MAX	CONTACT ARRANGEMENT
FULL OVERTRAVEL TORQUE -- 6 IN LB MAX	(SEE CIRCUIT DIAGRAM)
RELEASE TORQUE - - - - 3/4 IN LB MIN	L127
PRETRAVEL - - - - - 5° MAX	10A 125, 250 OR 480 VAC
OVERTRAVEL - - - - - 30° MIN	1/4HP 125 VAC, 1/2HP 250 VAC
RELEASE TRAVEL - - - - - 0°30' MIN	
SWITCH-BASIC REPLACEMENT - - -2MN8-L	



THIRD ANGLE PROJECTION



SCALE	1/2 : 1
DO NOT SCALE PRINT	
UNLESS OTHERWISE SPECIFIED TOLERANCES ARE	
ONE PLACE	(.0) ±.030
TWO PLACE	(.00) ±.015
THREE PLACE	(.000) ±.005
ANGLES	±
WEIGHT	

# Mouser Electronics

Authorized Distributor

Click to View Pricing, Inventory, Delivery & Lifecycle Information:

[Honeywell:](#)

[1LS9-L](#)