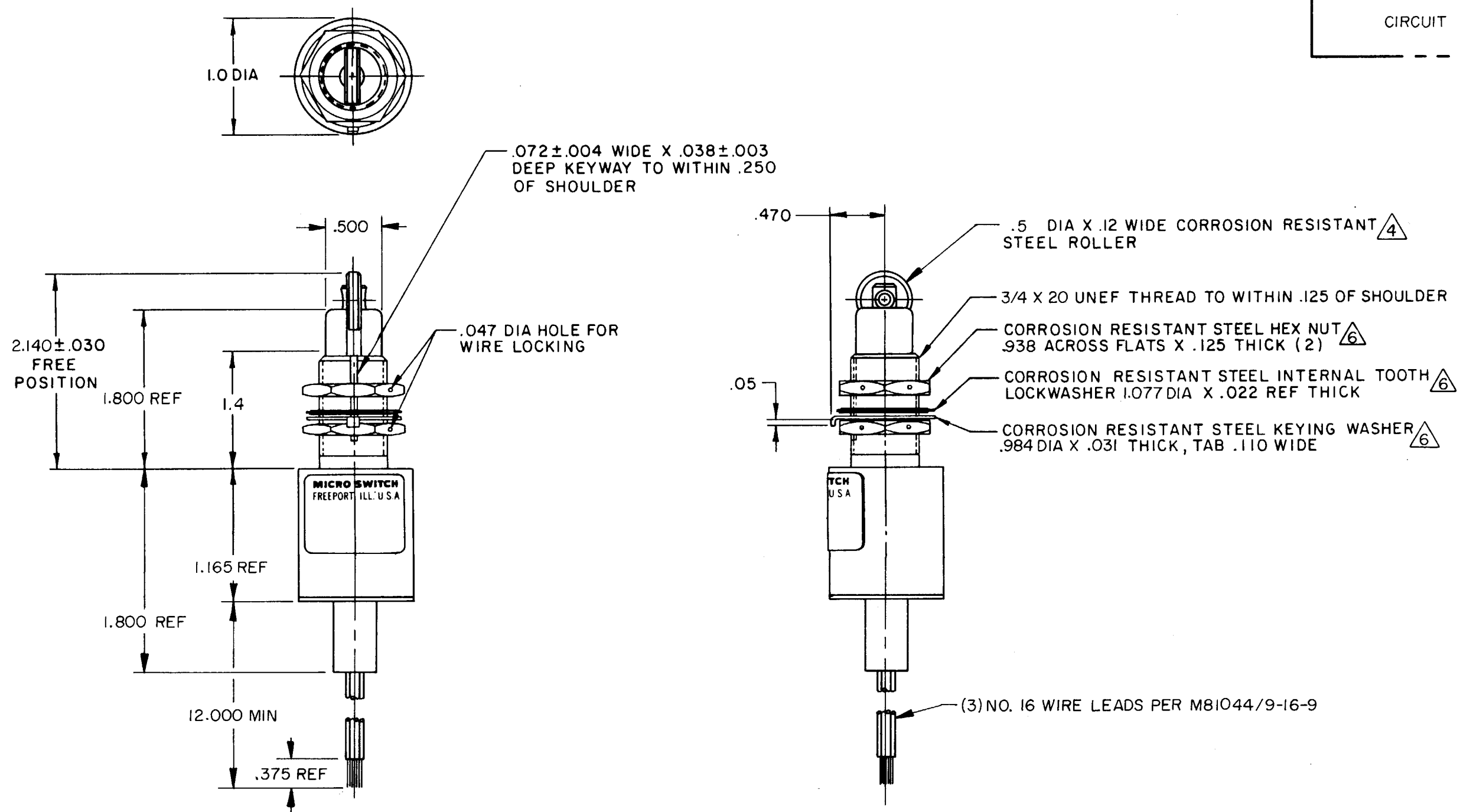
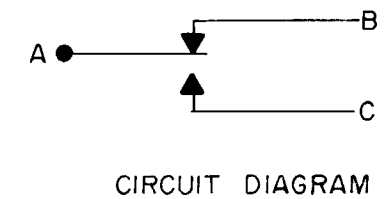


FED. MFG. CODE 91929

CATALOG LISTING
21EN380-1B



CHARACTERISTICS	
OPERATING FORCE —————	6-12 LB
FULL OVERTRAVEL FORCE ———	30 LB MAX
RELEASE FORCE —————	4 LB MIN
PRETRAVEL —————	.040 MAX
DIFFERENTIAL TRAVEL ———	.020 MAX
OVERTRAVEL —————	.250 MIN

ELECTRICAL DATA		
CONTACT ARRANGEMENT		
S P N C		
LOAD	28 VDC	
	SEA LEVEL	50,000 FT.
RES	7	4
IND	4	2.5
MOTOR	4	
LAMP		

WEIGHT 13.0 OZ MAX

- 1 - CORROSION RESISTANT STEEL ENCLOSURE
- 2 - SWITCH SEALED PER MIL-S-8805 SYMBOL 4
- 3 - CIRCUIT DIAGRAM, CATALOG LISTING AND DATE CODE ARE SHOWN ON NAMEPLATE
- 4 - FIXED ROLLER ORIENTATION IN LINE WITH KEYWAY AND CABLE
- 5 - COINCIDENCE OF OPERATE AND RELEASE POINT .010
- 6 - HARDWARE MAY BE PACKAGED UNASSEMBLED PER MIL-S-8805

Mouser Electronics

Authorized Distributor

Click to View Pricing, Inventory, Delivery & Lifecycle Information:

[Honeywell:](#)

[21EN380-1B](#)