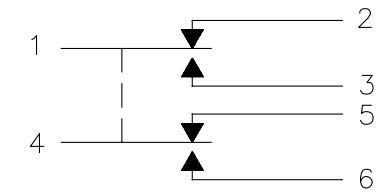


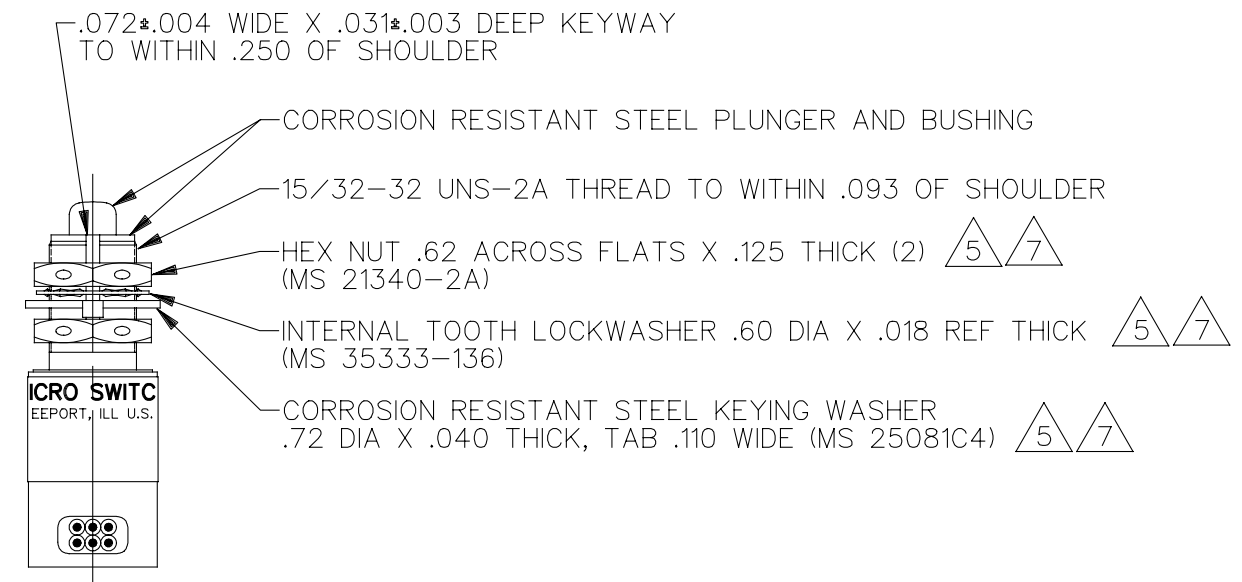
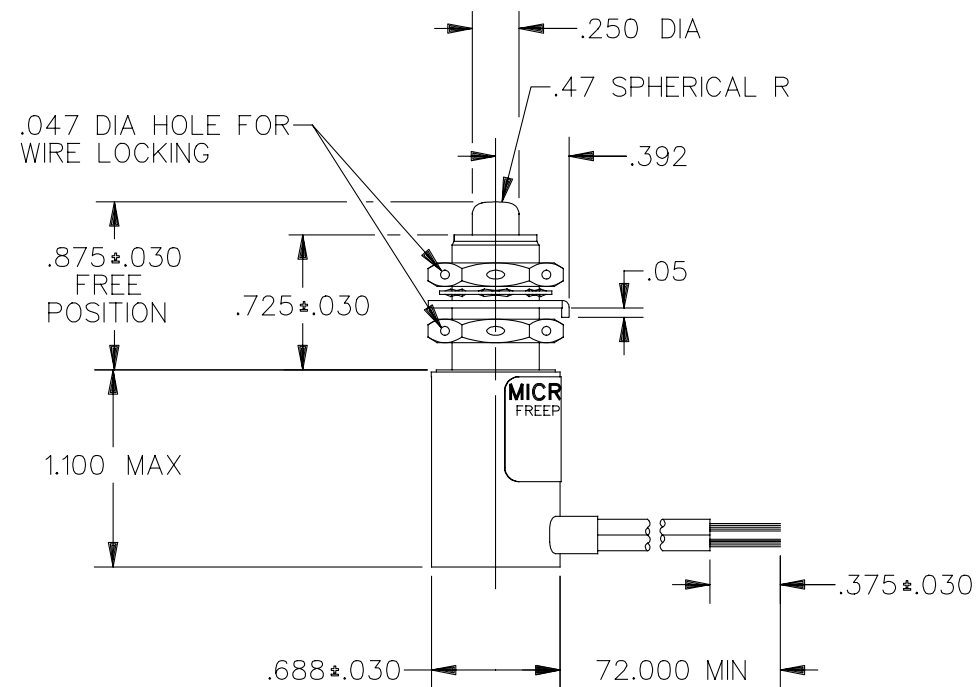
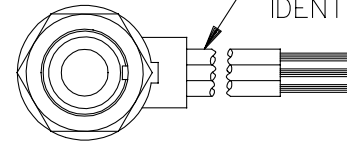
FED. MFG. CODE 91929

CATALOG LISTING
602HE1-6



CIRCUIT DIAGRAM

—(6) NO. 20 WIRE LEAD PER MIL-W-22759/7 MARKED WITH CIRCUIT IDENTIFICATION AND WIRE GAGE (1-20, 2-20, ETC) PER MIL-W-5088



THIS DRAWING COVERS A PROPRIETARY ITEM AND IS THE PROPERTY OF MICRO SWITCH, A DIVISION OF HONEYWELL. THIS DRAWING IS NOT TO BE COPIED OR USED WITHOUT THE APPROVAL OF MICRO SWITCH

| | |
|-------|------|
| SCALE | FULL |
|-------|------|

DO NOT SCALE PRINT

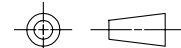
TOLERANCES

TOLERANCES
APPLY TO DESIGN UNITS. CONVERSIONS ARE ONLY FOR
REFERENCE. UNLESS NOTED, TOLERANCES ARE \pm

| | DIM. mm | TOL. mm/in | DIM. in | TOL. mm/in |
|--------------|------------|---------------|------------|---------------|
| NO PLACES | X | 1/04 | | |
| ONE PLACE | X,X | 0.4/016 | X,X | 0.8/03 |
| TWO PLACES | X,XX | 0.15/006 | X,XX | 0.38/015 |
| THREE PLACES | | | X,XXX | 0.13/005 |
| ANGLES | | | | |

SI METRIC ☐ US CUSTOMARY ☒

THIRD ANGLE PROJECTION



WEIGHT

6 - FOR OPERATION IN TEMPERATURE OF MINUS 65°F TO PLUS 257°F
7 - HARDWARE MAY BE PACKAGED UNASSEMBLED PER MIL-S-8805

602HE1-6



DRAWING
NUMBER

3

E

REVISIONS

| | |
|---|----------|
| A | PR15350T |
|---|----------|

MAM
6 FEB 87

| | |
|----------|--|
| 3 FEB 87 | |
|----------|--|

REPLACES

RELEASE NO. PR-15350-T

CHECK

CHECK

CHECK

5 FEB 87

DRAWN

| | |
|--|--|
| | |
| | |

MA

Mouser Electronics

Authorized Distributor

Click to View Pricing, Inventory, Delivery & Lifecycle Information:

[Honeywell:](#)

[602HE1-6](#)