

MICRO SWITCH
FREEPORT, ILLINOIS, U.S.A.
A DIVISION OF HONEYWELL
FED. MFG. CODE 91929

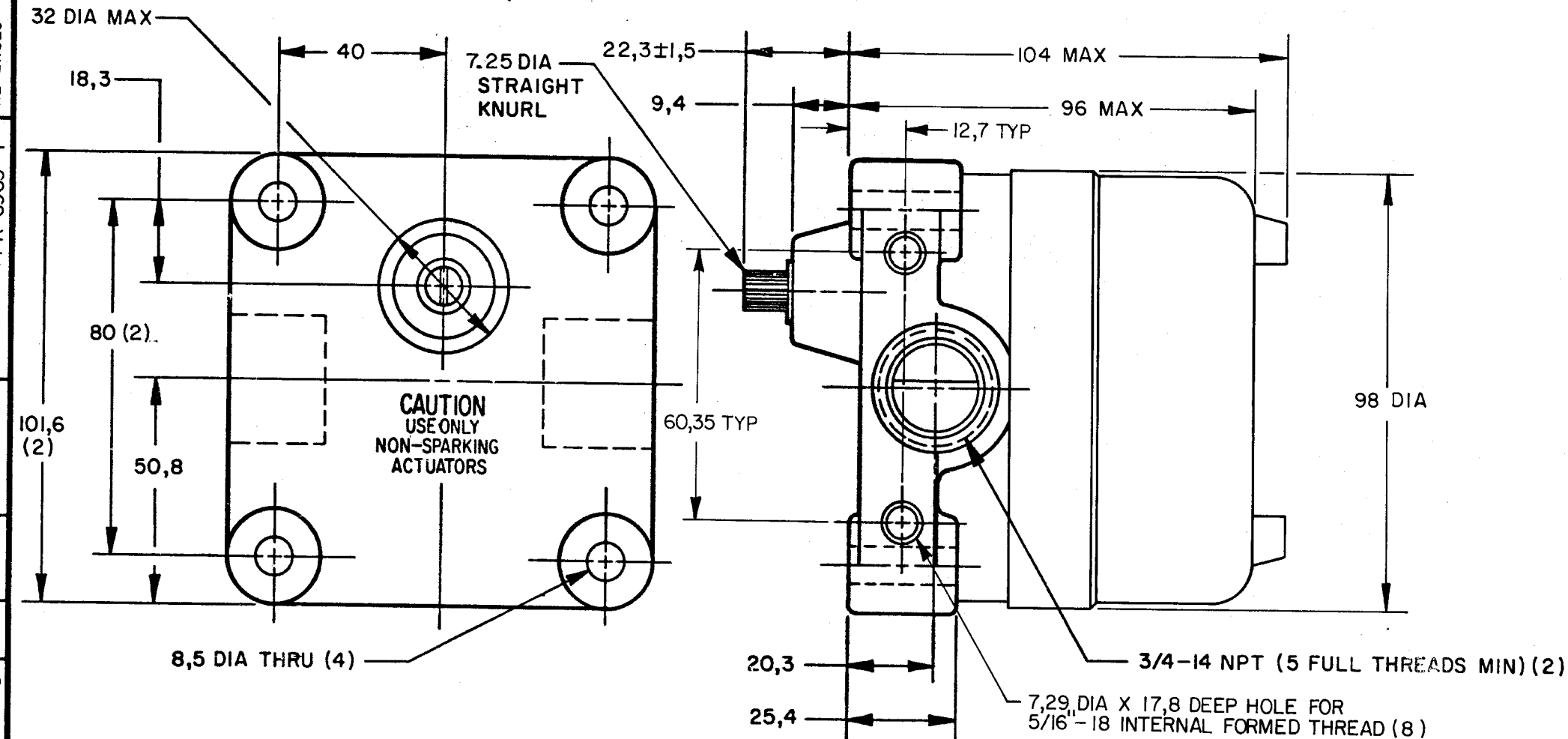
SWITCH-ENCLOSED

CATALOG LISTING
16CX SERIES
CHART 1

CONVERSION CHART

5,55	.218
7,25	.285
7,29	.287
8,5	.33
9,4	.37
12,7	.50
17,8	.70
18,3	.72
20,3	.80
22,3±1,5	.880±.059
25,4	1.00
32,0	1.26
40,0	1.57
50,8	2.00
60,35	2.38
80,0	3.15
96,0	3.78
98,0	3.86
101,6	4.00
104,0	4.09
1,25 Nm	.922 PF
0.113 Nm	.083 PF
1.13 Kg	2.49 LB

16CX SERIES CHART 1	
M	RELEASE NO. PR-6965-T
DRAWING NUMBER	7
ISSUE	8



NOTES

- 1 - EXPLOSION PROOF-UNDERWRITERS LAB INC LISTING FOR HAZARDOUS LOCATIONS CLASS I, GROUPS B, C AND D; CLASS II, GROUPS E, F AND G
- 2 - ALUMINUM ENCLOSURE FINISHED WITH BLUE AND BLACK EPOXY PAINT
- 3 - 6-32 UNC X 5,55 REF BINDING HEAD TERMINAL SCREW & CUP WASHER (3 PER BASIC)
- 4 - CAMS MAY BE REPOSITIONED IN 7°20' INCREMENTS
- 5 - FOR USE IN TEMPERATURES UP TO 85-C
- 6 - SEE (M) 7CX CHARTS 1 & 2 FOR LEVER ACTUATORS

THIS DRAWING COVERS A PROPRIETARY ITEM AND IS THE PROPERTY OF MICRO SWITCH, A DIVISION OF HONEYWELL. THIS DRAWING IS NOT TO BE COPIED OR USED WITHOUT THE APPROVAL OF MICRO SWITCH.

THIRD ANGLE PROJECTION

SCALE 3/4 TO 1

DO NOT SCALE PRINT

TOLERANCES

APPLY TO DESIGN UNITS. CONVERSIONS ARE ONLY FOR REFERENCE. UNLESS NOTED, TOLERANCES ARE ±

DIM.	TOL.	DIM.	TOL.
mm	mm/in	in	mm/in
NO PLACES	X	1/64	
ONE PLACE	X, X	0.0018	X, X
TWO PLACES	X, X	0.0008	X, X
THREE PLACES	X, X, X	0.0005	X, X, X

SI METRIC ☒ US CUSTOMARY ☐

DESIGN UNITS

RAW MATERIAL-COMMERCIAL STANDARD

MICRO SWITCH STANDARDS APPLY

DIMENSIONS ARE TO BE MET BEFORE

PROTECTIVE COATINGS ARE APPLIED

WEIGHT 1,13 Kg APPROX

CHARACTERISTICS

OPERATING FORCE	1,25 Nm MAX
RELEASE FORCE	0,113 Nm MIN
PRETRAVEL	30° MAX
DIFFERENTIAL TRAVEL	20° MAX
OVERTRAVEL	75° MIN

CONTACT ARRANGEMENT
S P D T

CAT LIST	DESCRIPTION	ELECTRICAL DATA
16CX1-	1 BASIC; OPERATES CW & CCW	UL LISTED-FILE E14274 CODE L22 1A-125 VAC
16CX2-	2 BASICS; EACH OPERATES CW & CCW	
	STANDARD OPERATOR CYCLES PER HOUR	

Mouser Electronics

Authorized Distributor

Click to View Pricing, Inventory, Delivery & Lifecycle Information:

[Honeywell:](#)

[16CX1](#) [16CX2](#)