

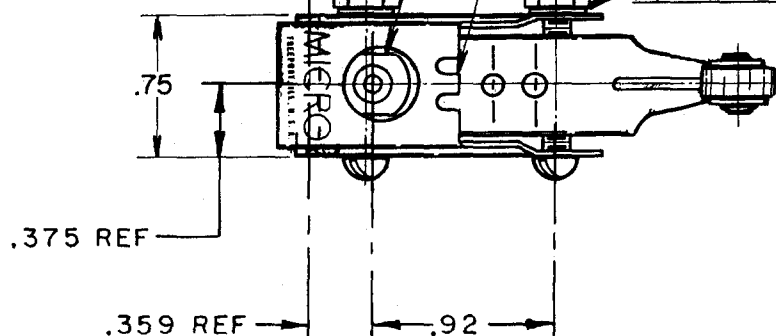
FREE POSITION
ADJUSTMENT TAB

OPERATING POSITION
ADJUSTMENT TAB—

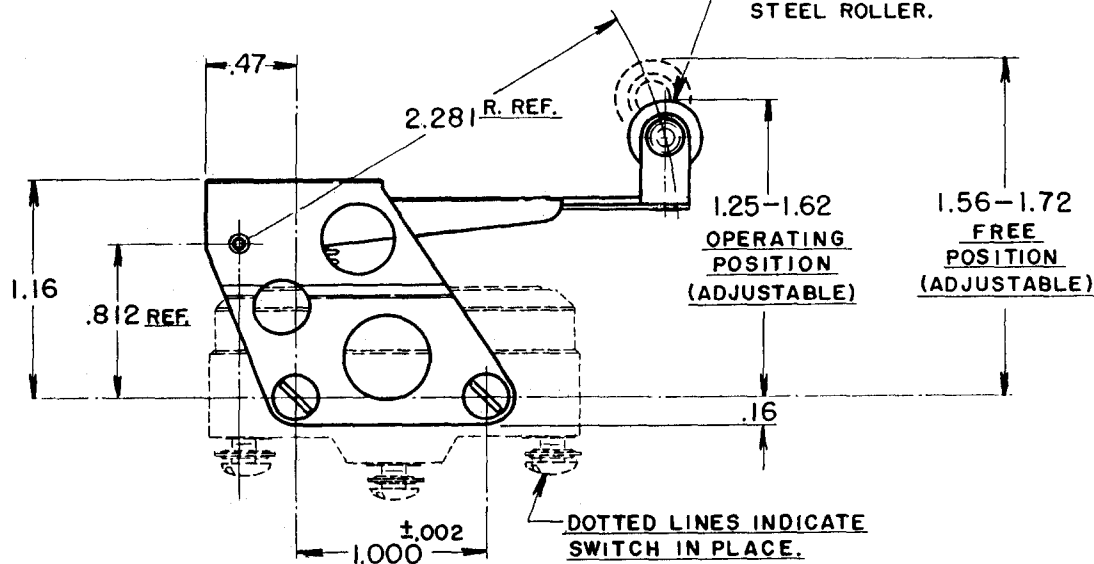
(2) 6-32 x 1.125^{REF.} ROUND HEAD MACHINE SCREW

-(2) 6-32 NC ST'D HEX. NUT (AN 340-6)

-(2) LOCKWASHER (AN 936 A6)



-.37 DIA. x .15 WIDE HARDENED
STEEL ROLLER.

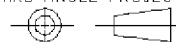


NOTE-

1-SCREWS, NUTS, AND LOCKWASHERS FURNISHED UNASSEMBLED.

THIS DRAWING COVERS A PROPRIETARY ITEM AND IS THE PROPERTY OF MICRO SWITCH, A DIVISION OF HONEYWELL. THIS DRAWING IS NOT TO BE COPIED OR USED WITHOUT THE APPROVAL OF MICRO SWITCH.

THIRD ANGLE PROJECTION



| CHARACTERISTICS | ELECTRICAL DATA | | SCALE | FULL | DO NOT SCALE PRINT |
|---------------------------------|---------------------|----------------|--|--------|-----------------------|
| OVERTRAVEL — — — — .438 APPROX. | CONTACT ARRANGEMENT | BREAK DISTANCE | UNLESS OTHERWISE SPECIFIED TOLERANCES ARE | | |
| | | | ONE PLACE | (.0) | ±.030 |
| | | | TWO PLACE | (.00) | ±.015 |
| | | | THREE PLACE | (.000) | ±.005 |
| | | | ANGLES | | ± |
| | | WEIGHT | | | |

Mouser Electronics

Authorized Distributor

Click to View Pricing, Inventory, Delivery & Lifecycle Information:

[Honeywell:](#)

[AD5721R](#)