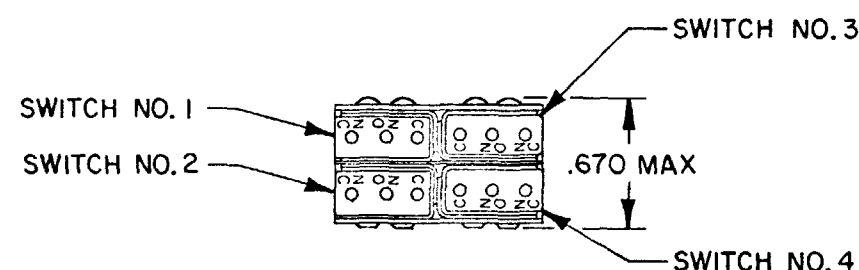


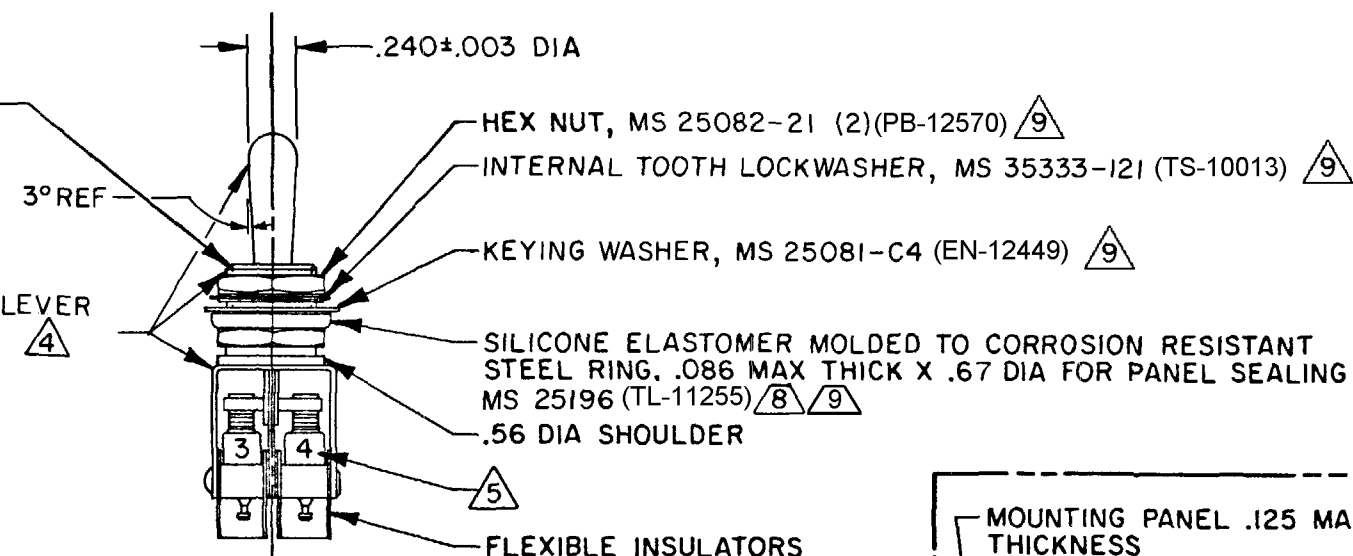
FED. MFG. CODE 91929

CHART 1

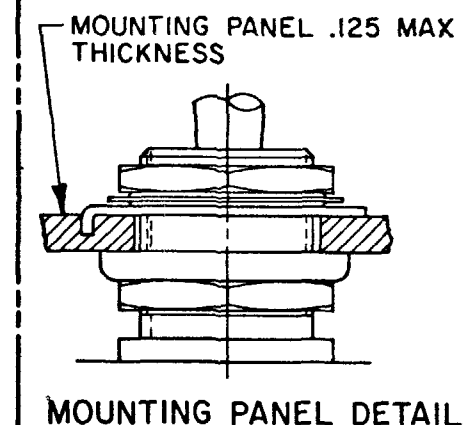
* ASTERISK DENOTES MOMENTARY POSITION



CORROSION RESISTANT LEVER
BUSHING AND BRACKET ▲



- 1 UNIT INCLUDES "SX" TYPE BASIC SWITCH (4) (MEETS REQUIREMENTS OF MIL-PRF-8805/4)
- 2 SWITCHES DO NOT NECESSARILY OPERATE SIMULTANEOUSLY
- 3 TERMINALS ARE PLATED FOR SOLDERING
- 4 DULL FINISH ON LEVER AND BUSHING
- 5 SWITCH NUMBERS MARKED ON END OF BASIC SWITCHES
- 6 TERMINAL DESIGNATION STAMPED ON BOTH SIDES OF UNIT
- 7 WHEN LEVER IS MOVED OUT OF A MAINTAINED POSITION, IT WILL RETURN OF ITS OWN ACCORD TO THE ORIGINAL POSITION OF THE ADJACENT POSITION. THE TOGGLE LEVER MAY HANG UP BETWEEN THE TWO ADJACENT POSITIONS ONLY BE EXERTING CONSIDERABLE EFFORT
- 8 FOR PANEL SEAL TO BE EFFECTIVE MOUNTING HOLE IN PANEL SHOULD NOT EXCEED .500 DIAMETER
- 9 HARDWARE FURNISHED ASSEMBLED WITH SWITCH OR IN PACKET 15PA314-AT PER MIL-PRF-8805
- 10 - REPLACEMENT MOUNTING HARDWARE PACKET 15PA314-AT


$$\frac{4}{2.5}$$

Mouser Electronics

Authorized Distributor

Click to View Pricing, Inventory, Delivery & Lifecycle Information:

Honeywell:

[64AT300-1](#) [64AT300-3](#) [64AT300-5](#) [64AT300-7](#)