

REVISIONS

A	PR	10672
B	WJM	29 OCT 81
C	JAP	30 DEC 81
D	CO	50845
E	CO	58771
F	CO	92352
G	CO	205502
H	CO	2 MAY 02

MICRO SWITCH

FREEPORT ILLINOIS U.S.A.
A DIVISION OF HONEYWELL

FED. MFG. CODE 91929

ASSEMBLY -
TOGGLE SWITCHCATALOG LISTING
66AT300 SERIES

CHART 2

CATALOG
LISTING

KEYWAY POSITION

C-NC

C-NO

CENTER POSITION

C-NO

C-NC

OPPOSITE KEYWAY
POSITION

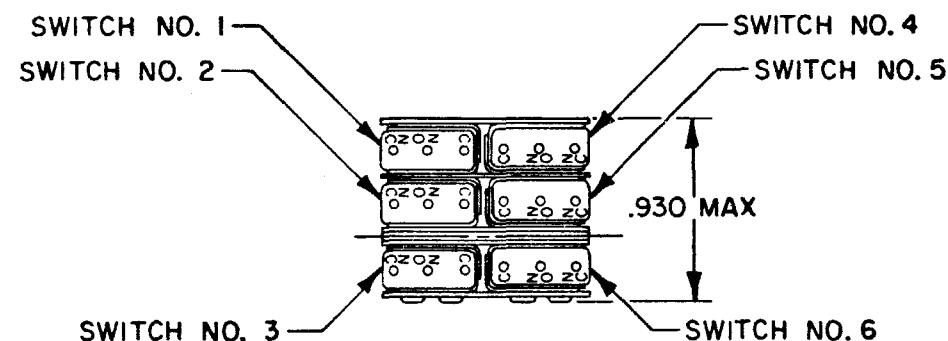
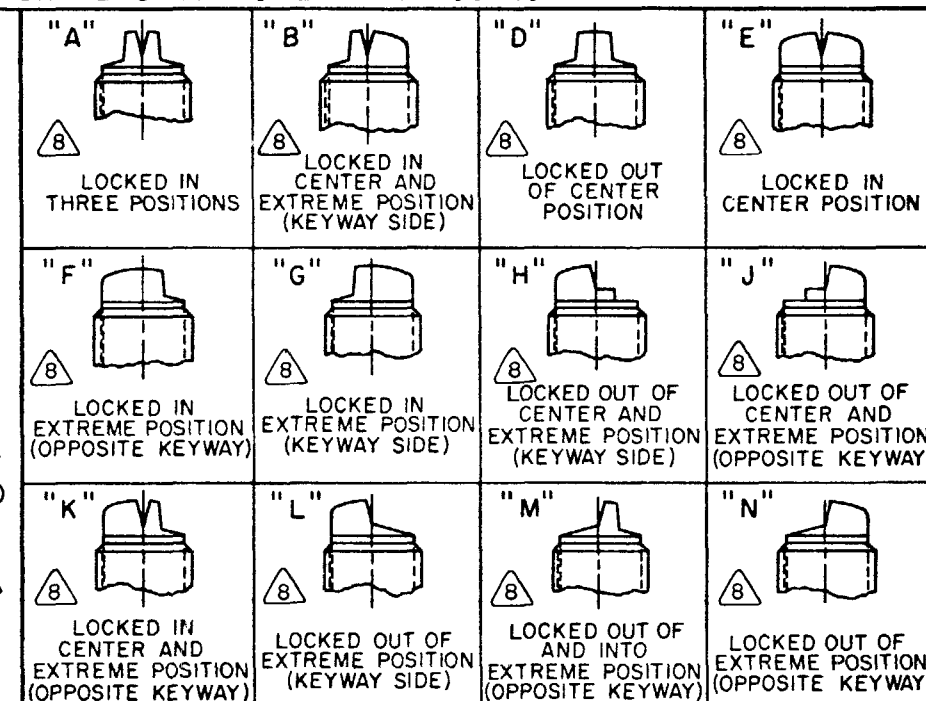
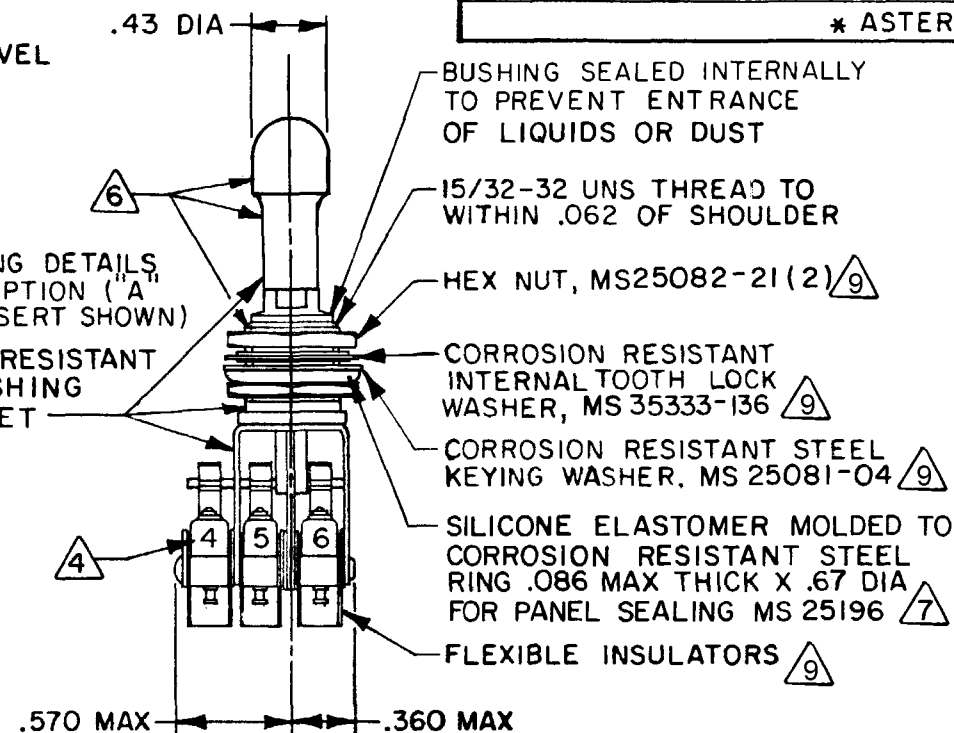
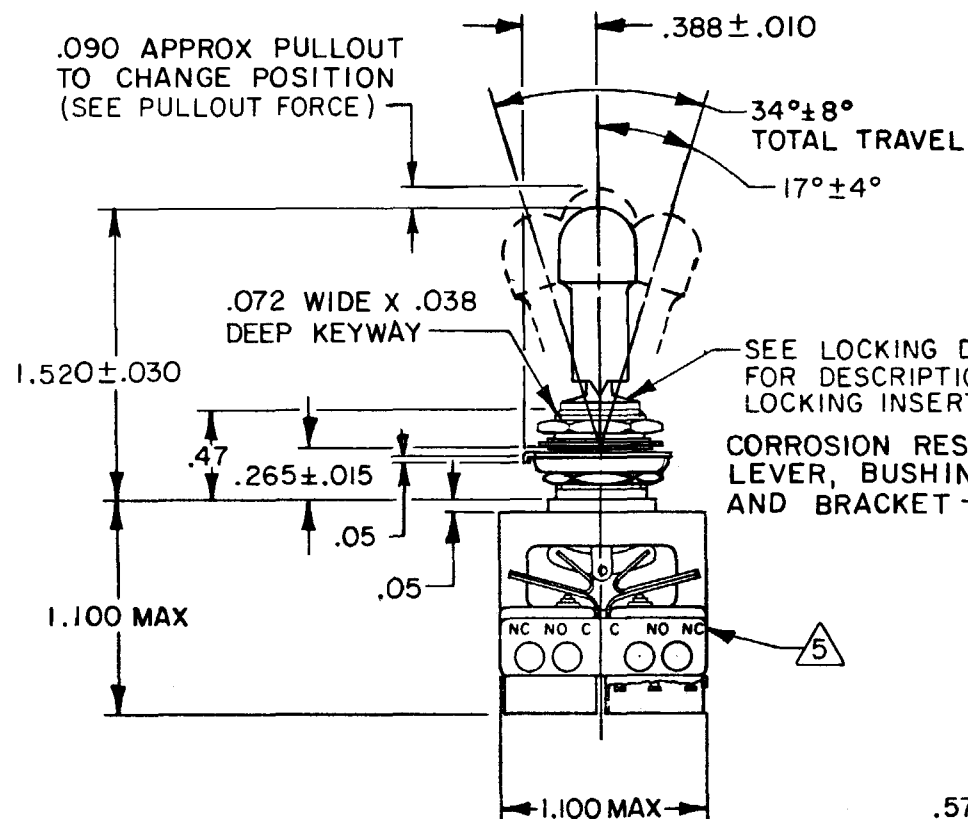
C-NC

C-NO

RECOMMENDED
LOCKING
COMBINATIONS

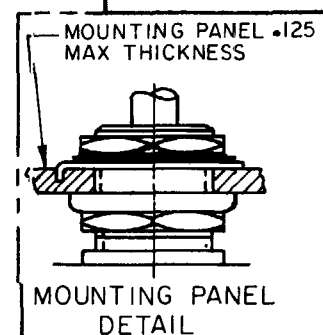
66AT300-1	1,2,3	4,5,6	NONE	ALL	4,5,6	1,2,3	A,B,D,E,F,G,H,J,K,L,M,NP
66AT300-3	1,2,3	4,5,6	NONE	NONE	4,5,6	1,2,3	D,F,G
66AT300-5	1,2,3 *	4,5,6 *	NONE	ALL	4,5,6	1,2,3	E,F,K,L,M,N
66AT300-7	1,2,3 *	4,5,6 *	NONE	ALL	4,5,6 *	1,2,3 *	E,L,N

* ASTERISK DENOTES MOMENTARY POSITION



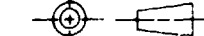
NOTES

- 1 - UNIT INCLUDES "SX" TYPE BASIC SWITCH (6) (MEETS REQUIREMENTS OF MIL-PRF-8805/4)
- 2 - SWITCHES DO NOT NECESSARILY OPERATE SIMULTANEOUSLY
- 3 - TERMINALS ARE PLATED FOR SOLDERING
- 4 SWITCH NUMBERS MARKED ON END OF BASIC SWITCHES
- 5 TERMINAL DESIGNATION MARKED ON BOTH SIDES OF UNIT
- 6 DULL FINISH ON BUTTON, LEVER, AND BUSHING
- 7 FOR PANEL SEAL TO BE EFFECTIVE MOUNTING HOLE IN PANEL SHOULD NOT EXCEED .500 DIA
- 8 SUFFIX LETTER MUST BE ADDED FOR DESIRED TYPE TOGGLE LOCKING (SEE CHART FOR RECOMMENDED LOCKING COMBINATIONS)
- 9 HARDWARE FURNISHED ASSEMBLED WITH SWITCH OR IN PACKET PER MIL-PRF-8805
- 10 - REPLACEMENT MOUNTING HARDWARE PACKET 15PA314-AT



THIS DRAWING COVERS A PROPRIETARY ITEM AND IS THE PROPERTY OF MICRO SWITCH, A DIVISION OF HONEYWELL. THIS DRAWING IS NOT TO BE COPIED OR USED WITHOUT THE APPROVAL OF MICRO SWITCH.

THIRD ANGLE PROJECTION



SCALE FULL

DO NOT SCALE PRINT

TOLERANCES

APPLY TO DESIGN UNITS. CONVERSIONS ARE ONLY FOR REFERENCE. UNLESS NOTED, TOLERANCES ARE:

DIM.	TOL.	DIM.	TOL.
mm	mm/in	in	mm/in
NO PLACES	1/64	NO PLACES	0.01/03
ONE PLACE	.001	ONE PLACE	0.001/01
TWO PLACES	.0005	TWO PLACES	0.0005/005
THREE PLACES	.0001	THREE PLACES	0.0001/001
ANGLES		ANGLES	

DESIGN UNITS ☐ SI METRIC ☒ US CUSTOMARY

RAW MATERIAL - COMMERCIAL STANDARD MICRO SWITCH STANDARDS APPLY

DIMENSIONS ARE TO BE MET BEFORE PROTECTIVE COATINGS ARE APPLIED

WEIGHT .09 LB EST

CHARACTERISTICS

PULLOUT FORCE - 3 LB MIN - 5 LB MAX

ELECTRICAL DATA

CONTACT ARRANGEMENT
SPDT (6)

ELECTRICAL RATINGS

LOAD

SEA LEVEL

50,000 FT

28 Vdc
(AMPERES)115 Vac, 60 Hz
(AMPERES)28 Vdc
(AMPERES)RESISTIVE
INDUCTIVE7
47
74
2.5

Mouser Electronics

Authorized Distributor

Click to View Pricing, Inventory, Delivery & Lifecycle Information:

[Honeywell:](#)

[66AT300-1M](#) [66AT300-3D](#) [66AT300-3F](#) [66AT300-7E](#)