

MICRO SWITCH

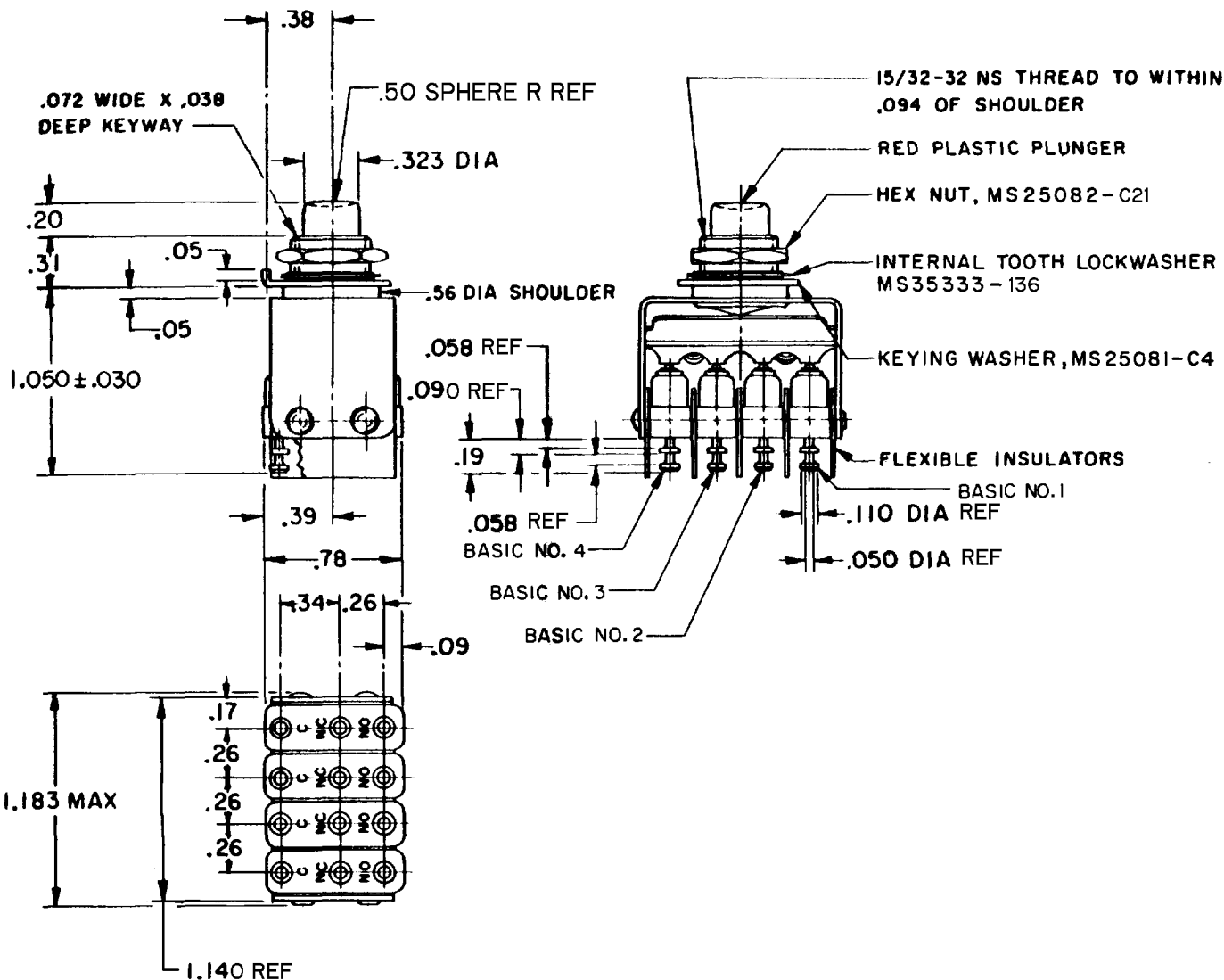
FREEPORT ILLINOIS, U.S.A
A DIVISION OF HONEYWELL

FED. MFG. CODE 91929

ASSEMBLY- PUSHBUTTON SWITCH

CATALOG LISTING
4PB717-T2

MILITARY P / N
M8805/23-004



NOTES

- 1- UNIT INCLUDES MS25085-2 TYPE BASIC SWITCH (4)
- 2- TERMINALS ARE PLATED FOR SOLDERING
- 3- SWITCHES DO NOT NECESSARILY OPERATE SIMULTANEOUSLY

THIS DRAWING COVERS A PROPRIETARY ITEM AND IS THE PROPERTY OF MICRO SWITCH, A DIVISION OF HONEYWELL. THIS DRAWING IS NOT TO BE COPIED OR USED WITHOUT THE APPROVAL OF MICRO SWITCH.

CHARACTERISTICS

OPERATING FORCE----- 5.5 LB MAX
TOTAL TRAVEL ----- .100 APPROX

ELECTRICAL DATA

CONTACT ARRANGEMENT S P D T (4)			
		SEA LEVEL	50,000 FT.
LOAD	28 VDC	115 VAC	28 VDC
RESISTIVE	5	5	5
INDUCTIVE	3	5	2.5
LAMP	2.4	1.5	2.4

SCALE FULL

DO NOT SCALE PRINT

UNLESS OTHERWISE NOTED

DIMENSIONS ARE IN INCHES
TOLERANCES ARE:
ONE PLACE (.0) ±.030
TWO PLACE (.00) ±.015
THREE PLACE (.000) ±.005
ANGLES ±

WEIGHT .075 LB MAX

4PB717-T2

PAGE 1 OF 1

M

DRAWING
NUMBER

8

ISSUE

REPLACES

RELEASE NO. PR785

28 OCT 98

JAF

CHECK

68

23 AUG 68

MCG

10 AUG 70

CHECK

23 AUG 68

LSD

CHECK

68

19 AUG

OMW

FORMTEK

FO-50378-1A

DRAWN

Mouser Electronics

Authorized Distributor

Click to View Pricing, Inventory, Delivery & Lifecycle Information:

[Honeywell:](#)

[4PB717-T2](#)