

MICRO SWITCH

a Honeywell Division

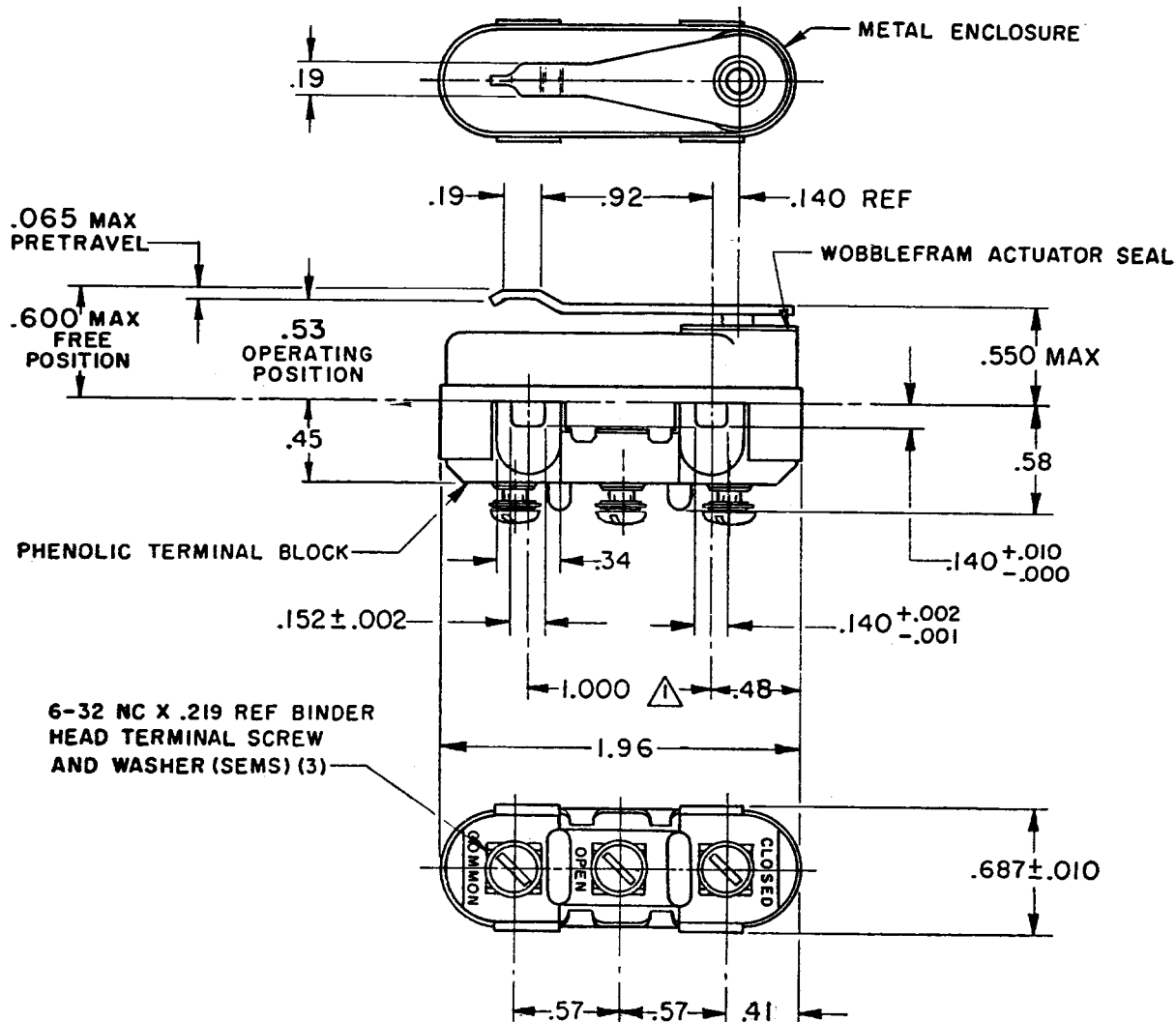
FED.MFG.CODE 91929

SWITCH - BASIC

CATALOG LISTING

1HS1

MILITARY STANDARD
MS 25011-1

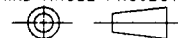


NOTES

- 1 MOUNTING HOLES WILL ACCEPT PINS OR SCREWS OF Ø.139 MAX ON 1.000 ± .002 CENTERS
- 2 - TRAVEL CHARACTERISTICS ARE REFERENCED FROM THE UPPER SURFACE OF MOUNTING HOLES WITH THIS CONSTRUCTION
- 3 - FOR USE IN AMBIENT TEMPERATURE RANGE FROM -65°F TO +250°F

THIS DRAWING COVERS A PROPRIETARY ITEM AND IS THE PROPERTY OF MICRO SWITCH, A DIVISION OF HONEYWELL. THIS DRAWING IS NOT TO BE COPIED OR USED WITHOUT THE APPROVAL OF MICRO SWITCH.

THIRD ANGLE PROJECTION



CHARACTERISTICS

OPERATING FORCE — — — 10-22 OZ
RELEASE FORCE — — — — 4 OZ MIN
DIFFERENTIAL TRAVEL — — — .020 MAX
OVERTRAVEL — — — — — .010 MIN

ELECTRICAL DATA

CONTACT ARRANGEMENT
S P D T

LOAD	CURRENT CAPACITY (AMPERES)			
	28 VDC	115 VAC ,60 HZ	120 VDC	
RESISTIVE	25	1	.5	
INDUCTIVE	8	1	.5	

L277

1A 125 VAC, 5A 28 VDC
DWL



SCALE FULL

DO NOT
SCALE PRINT

UNLESS OTHERWISE SPECIFIED
TOLERANCES ARE

ONE PLACE (.)	±.030
TWO PLACE (.00)	±.015
THREE PLACE (.000)	±.005
ANGLES	±

WEIGHT 1.6 OZ MAX

CATALOG LISTING

1HS1

PAGE 1 OF 1

M

26

REV SIONS

A NEW DRAWING
19 JUL 94
B C094121
DLT
2 APR 99

FORMTEK

DRAWN

REPLACES

RELEASE NO.

CHECK

CHECK

1 SEPT 94

TSM

19 JUL 94

S A D

Mouser Electronics

Authorized Distributor

Click to View Pricing, Inventory, Delivery & Lifecycle Information:

[Honeywell:](#)

[1HS1](#)