

# MICRO SWITCH

A DIVISION OF MINNEAPOLIS-HONEYWELL REGULATOR COMPANY  
PRAIRIE RIDGE, ILLINOIS

FED. MFR. CODE 91929

## SWITCH - BASIC

CATALOG LISTING

IXEI-T ★

MILITARY STDS PART  
NO. MS - 27994 - 3

IXEI-T

M

DRAWING  
NUMBER

2

X

ISSUE

4

### REVISIONS

A C029133

R C R  
23 JUNE 71

B C031661

R C R  
13 APR 73

C CO-34097

J A L  
9 SEPT 74

REPLACES

SR 10065

RELEASE NO.

15 FEB 62

CHECK

E 2 L

CHECK

15 FEB 62

CHECK

15 FEB 62

CHECK

15 FEB 62

CHECK

15 FEB 62

CHECK

15 FEB 62

CHECK

15 FEB 62

CHECK

15 FEB 62

CHECK

15 FEB 62

CHECK

15 FEB 62

CHECK

15 FEB 62

CHECK

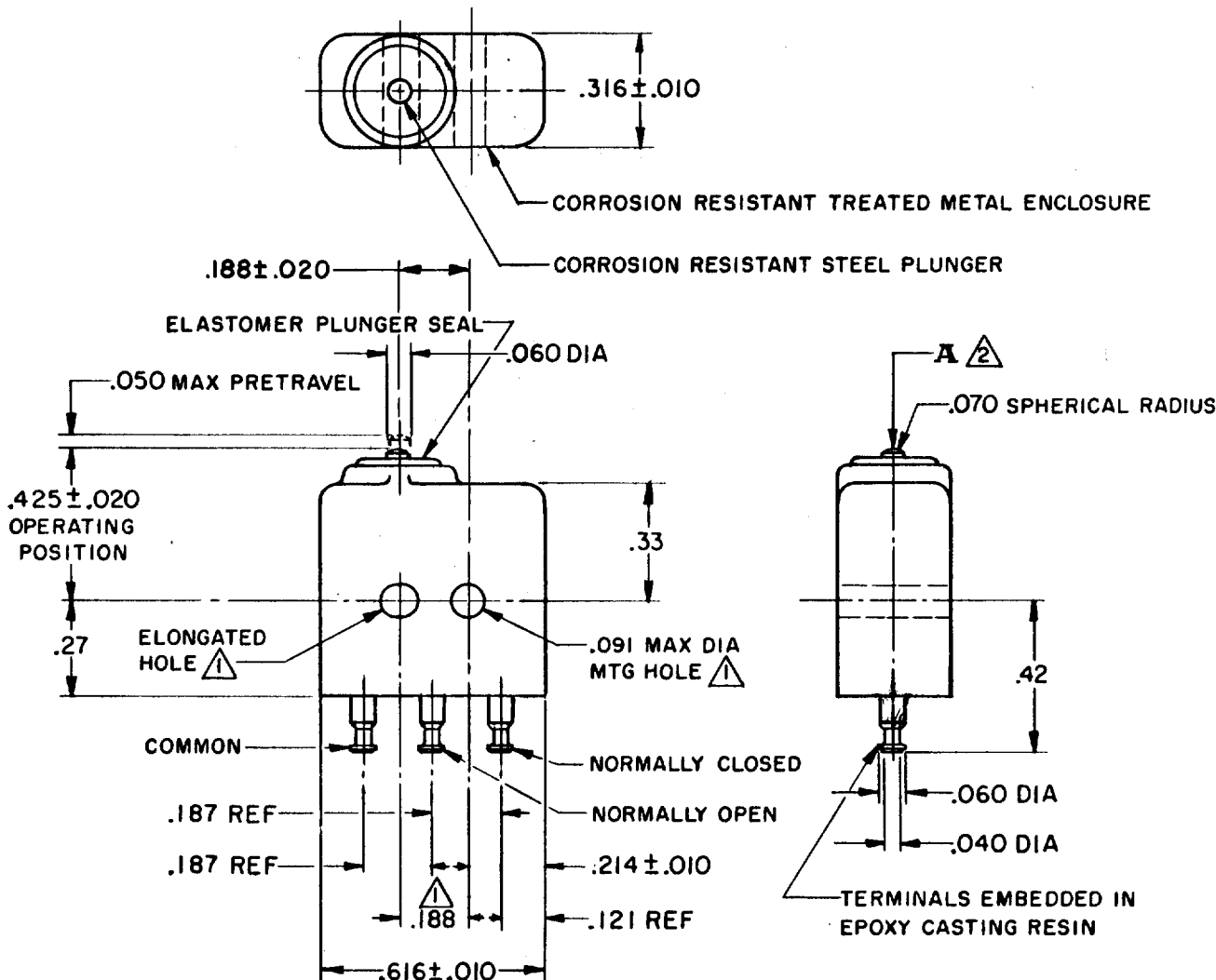
15 FEB 62

CHECK

15 FEB 62

CHECK

15 FEB 62



### NOTE -

- ▲ MOUNTING HOLES WILL ACCEPT .087 MAX DIA PINS OR SCREWS ON  $.188 \pm .002$  CENTERS
- ▲ ACTUATION IN LINE WITH ARROW "A" IS RECOMMENDED

THIS DRAWING COVERS A PROPRIETARY ITEM AND IS THE PROPERTY OF MICRO SWITCH, A DIVISION OF MINNEAPOLIS-HONEYWELL REGULATOR CO. THIS DRAWING IS NOT TO BE COPIED OR USED WITHOUT THE APPROVAL OF MICRO SWITCH.

### CHARACTERISTICS

OPERATING FORCE ----- 5-17 OZ  
RELEASE FORCE ----- 4 OZ MIN  
RELEASE TRAVEL ----- .004 MIN  
DIFFERENTIAL TRAVEL ----- .005 MAX  
OVERTRAVEL ----- .004 MIN

### ELECTRICAL DATA

CONTACT ARRANGEMENT S P D T

28 VOLTS DC RATING  
INDUCTIVE ----- SEA LEVEL ----- 4 AMP  
50,000 FT ----- 2.5 AMP  
RESISTIVE ----- SEA LEVEL ----- 7 AMP  
50,000 FT ----- 7 AMP  
LAMP ----- SEA LEVEL ----- 1 AMP  
MOTOR ----- 2.5 AMP

115 V 400 CYCLES ----- SEA LEVEL  
RESISTIVE ----- 7 AMP  
INDUCTIVE ----- 4 AMP  
LAMP ----- 1 AMP  
MOTOR ----- 1.5 AMP

SCALE 2 TO 1

DO NOT SCALE PRINT

UNLESS OTHERWISE SPECIFIED  
DIMENSIONS ARE IN INCHES  
TOLERANCES ARE:

ONE PLACE (.0)  $\pm .030$   
TWO PLACE (.00)  $\pm .015$   
THREE PLACE (.000)  $\pm .005$   
ANGLES  $\pm$

WEIGHT .16 OZ MAX

FO-50378

DRAWN

D W V 13 FEB 62

# Mouser Electronics

Authorized Distributor

Click to View Pricing, Inventory, Delivery & Lifecycle Information:

[Honeywell:](#)

[1XE1-T](#)