

MICRO SWITCH

A DIVISION OF MINNEAPOLIS-HONEYWELL REGULATOR COMPANY

FED. MFR. CODE 91929

SWITCH - ENCLOSED

CATALOG LISTING

9-11585

9-11585

DRAWING
NUMBERISSUE
17

REPLACES

RELEASE NO. PR-8532

CHECK

12JUN08

CMH

CHECK

8 MAR 80

C E B

CHECK

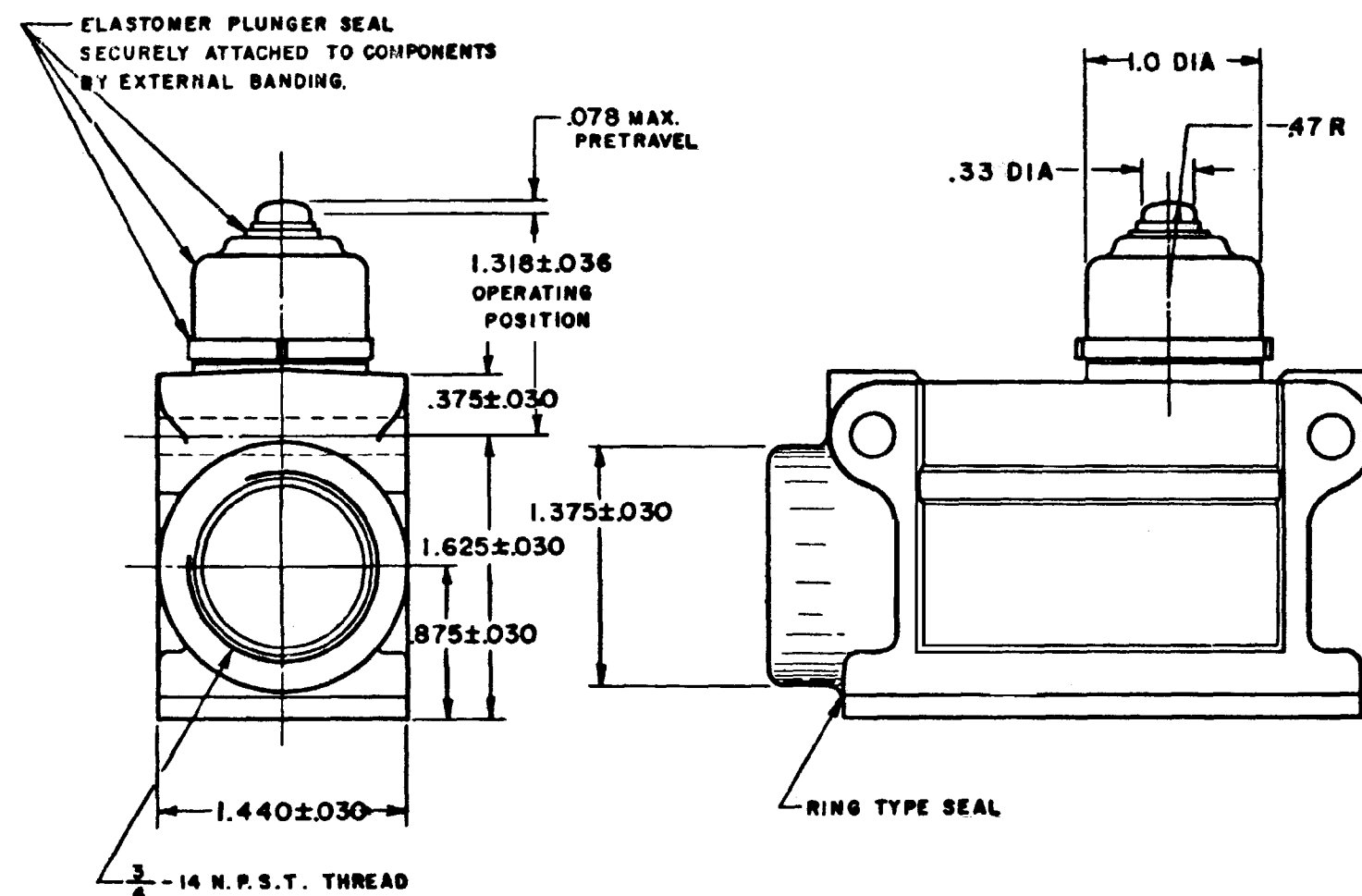
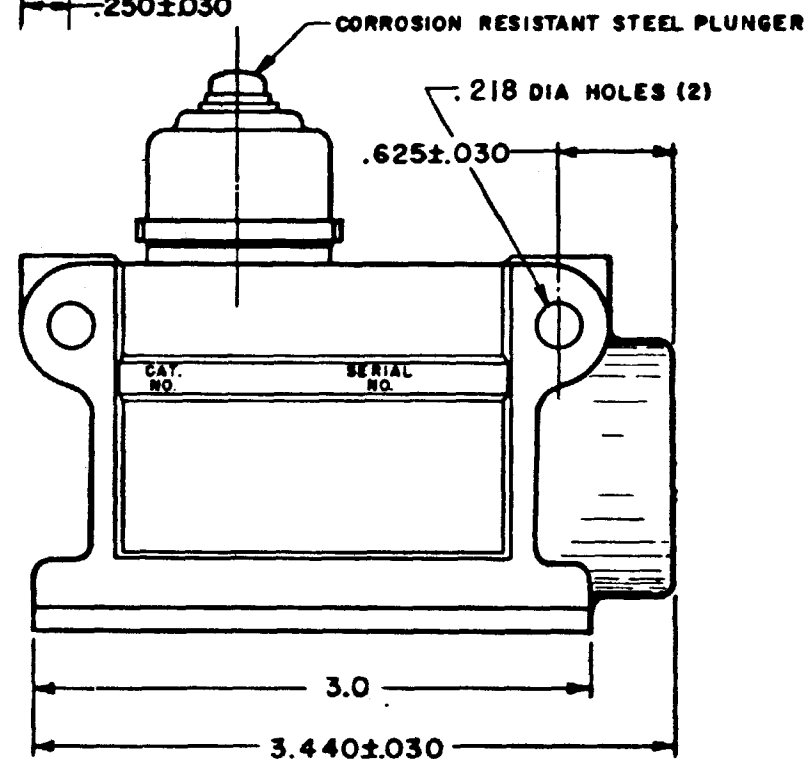
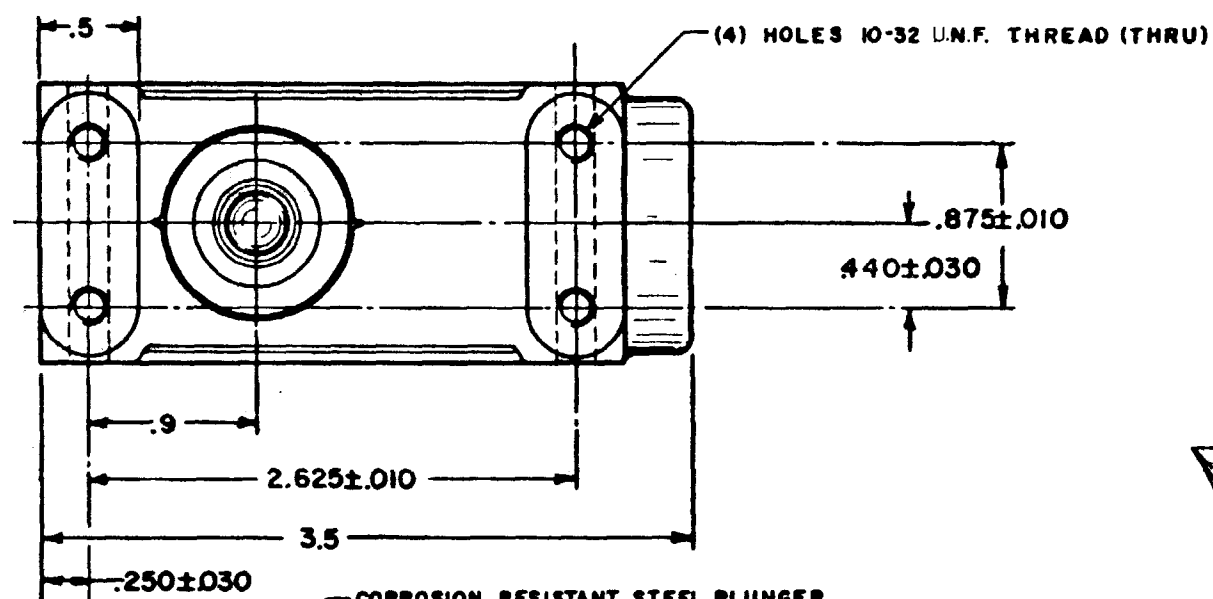
8 MAR 80

DRAWN

G J W

REVISIONS

A	88S DWG CO 46881	G J W	28 JAN 80
B	REINST. PR-8532	G J W	7 MAR 80
C	CO65062 SLB	G J W	16 APR 90
D	204537	G J W	DEC 01
E	0007749	TCC-AP	SEP 04
F	0040541	NR	12JUN08



THIS DRAWING COVERS A PROPRIETARY ITEM AND IS THE PROPERTY OF MICRO SWITCH, A DIVISION OF MINNEAPOLIS-HONEYWELL REGULATOR CO. THIS DRAWING IS NOT TO BE COPIED OR USED WITHOUT THE APPROVAL OF MICRO SWITCH.

CHARACTERISTICS		ELECTRICAL DATA		SCALE FULL
OPERATING FORCE	28-54 OZ	CONTACT ARRANGEMENT	BREAK DISTANCE	DO NOT SCALE PRINT
DIFFERENTIAL TRAVEL	.005 MAX	S P D T	.070 MIN	
RELEASE FORCE	10 OZ MIN			
OVERTRAVEL	.188 MIN			
FULL OVERTRAVEL FORCE	13 LB MAX			
				UNLESS OTHERWISE SPECIFIED DIMENSIONS ARE IN INCHES TOLERANCES ARE: ONE PLACE (.0) ±.050 TWO PLACE (.00) ±.015 THREE PLACE (.000) ±.005 ANGLES ±
				WEIGHT

NOTE

1 - ALUMINUM ENCLOSURE FINISHED WITH PRIMER

Mouser Electronics

Authorized Distributor

Click to View Pricing, Inventory, Delivery & Lifecycle Information:

[Honeywell:](#)

[9-11585](#)