

FED. MFG. CODE 91929

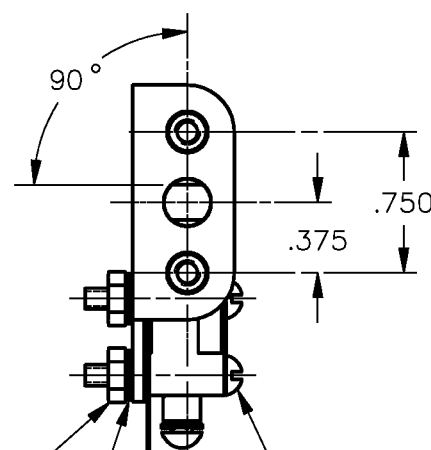
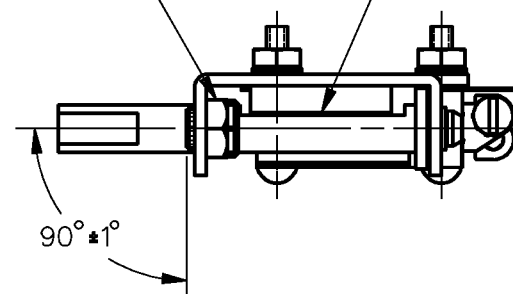
CATALOG LISTING

KS-G0120

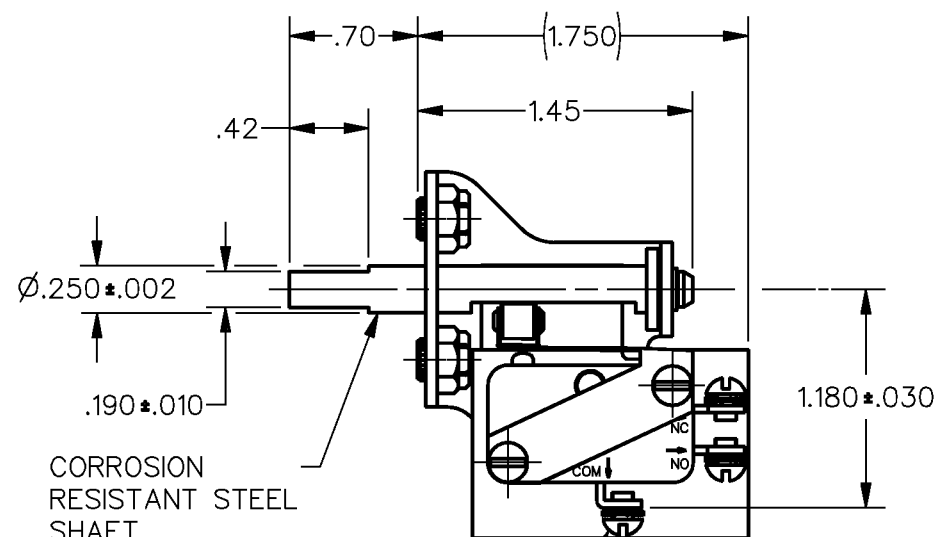
FAA-PMA

2X 6-32 UNC THREAD LOCKING
TYPE HEX NUT .31 ACROSS FLATS

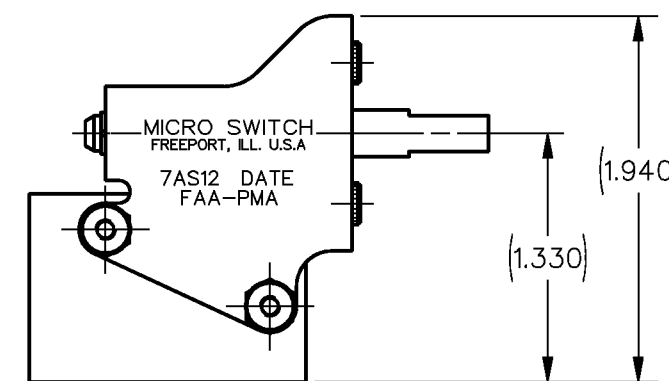
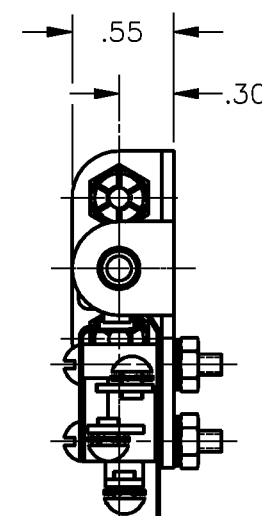
DETENT SPRING



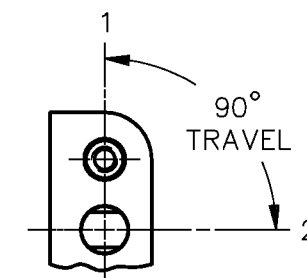
2X HEX NUT
2X LOCKWASHER
2X ROUND HEAD
MACHINE SCREW



3X 4-40 UNC X (.125) ROUND HEAD
TERMINAL SCREW AND LOCKWASHER



— FLEXIBLE INSULATOR

MECHANISM IN
POSITION NO. 1

POSITION OF SHAFT	SWITCH ACTUATED N.O. TO COM. MADE
1	NONE
2	1

THIS DRAWING COVERS A PROPRIETARY ITEM AND IS THE PROPERTY OF MICRO SWITCH, A DIVISION OF HONEYWELL. THIS DRAWING IS NOT TO BE COPIED OR USED WITHOUT THE APPROVAL OF MICRO SWITCH.

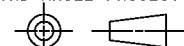
CHARACTERISTICS

ELECTRICAL DATA

CONTACT ARRANGEMENT
S P D T

15.1A 1/2HP 125, 250 VAC
1/2A 125 VDC, 1/4A 250 VDC
5A 125 VAC "L"

THIRD ANGLE PROJECTION



SCALE	FULL
-------	------

DO NOT SCALE PRINT

**UNLESS OTHERWISE SPECIFIED
TOLERANCES ARE**

ONE PLACE	(.0)	$\pm .030$
-----------	------	------------

TWO PLACE (.00) ±.015

THREE PLACE	(.000)	+ .005
-------------	--------	--------

ANGLES $\pm 3^\circ$

WEIGHT

NOTES

1 - UNIT INCLUDES CATALOG LISTING V3-201 BASIC SWITCH

2 - SWITCH WILL PERFORM SATISFACTORILY IN TEMPERATURES TO MINUS 20°F

3 - CATALOG LISTING, DATE OF MANUFACTURE AND FAA-PMA IS MARKED ON BRACKET

ANSI Y14.5M-1982 APPLIES

Mouser Electronics

Authorized Distributor

Click to View Pricing, Inventory, Delivery & Lifecycle Information:

[Honeywell:](#)

[7AS12](#)