

MICRO SWITCH
FREEPORT, ILLINOIS, U.S.A.
A DIVISION OF HONEYWELL
FED. MFG. CODE 91929

SWITCH-ENCLOSED

CATALOG LISTING
6LS2-7

6LS2-7

M

DRAWING
NUMBER

X 2

ISSUE

3

RELEASE NO. PR-18529

CHECK

REVISIONS
A CO-77031
J B B
22 DEC 93
B 202975
GLH
11 MAY 01

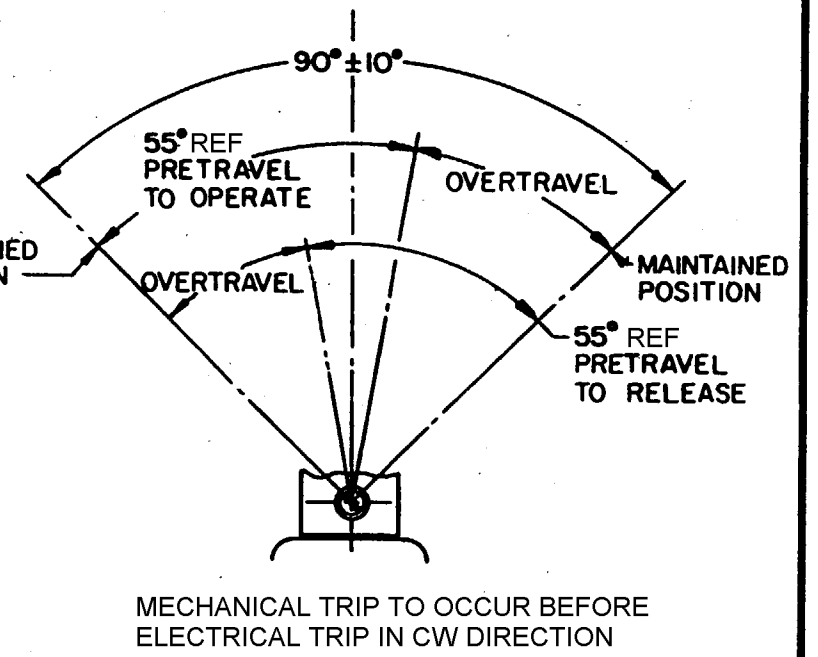
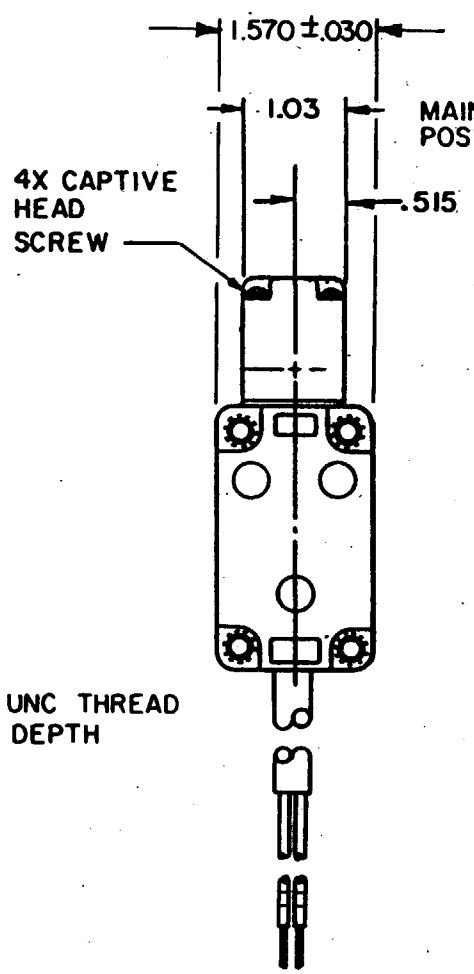
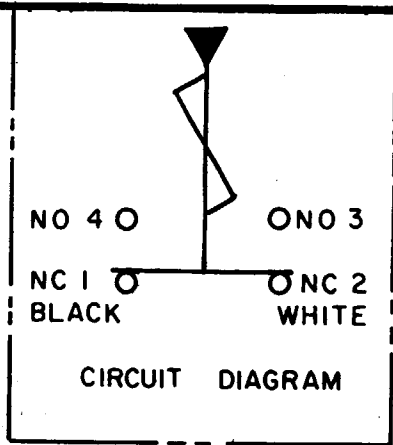
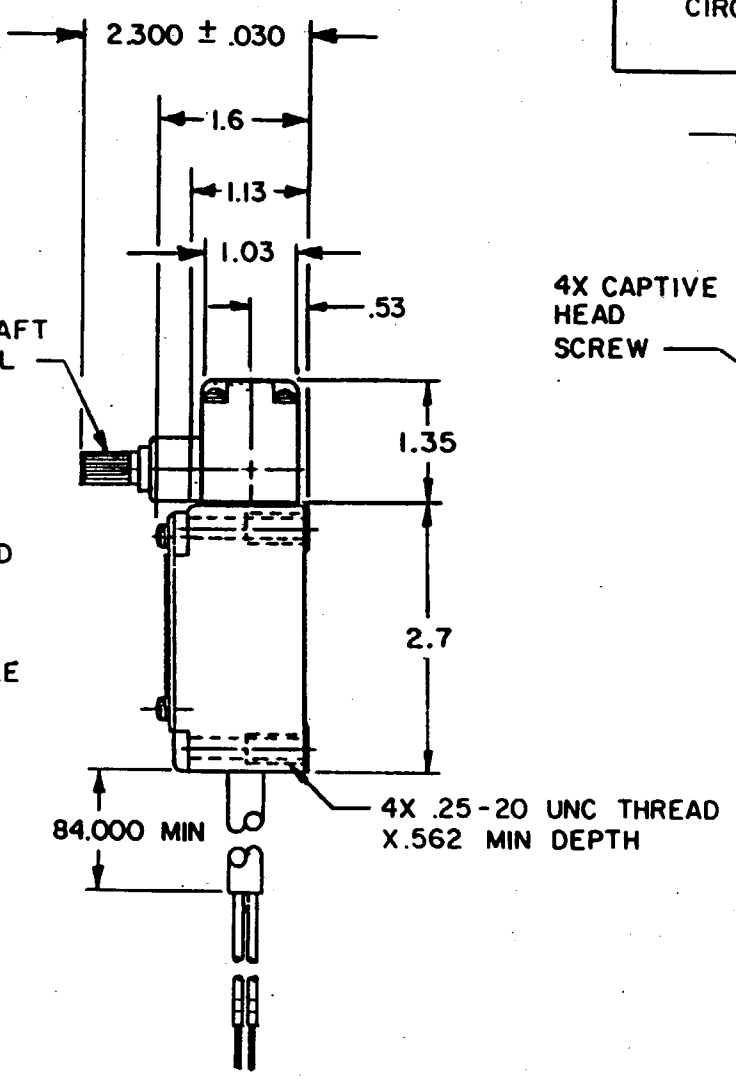
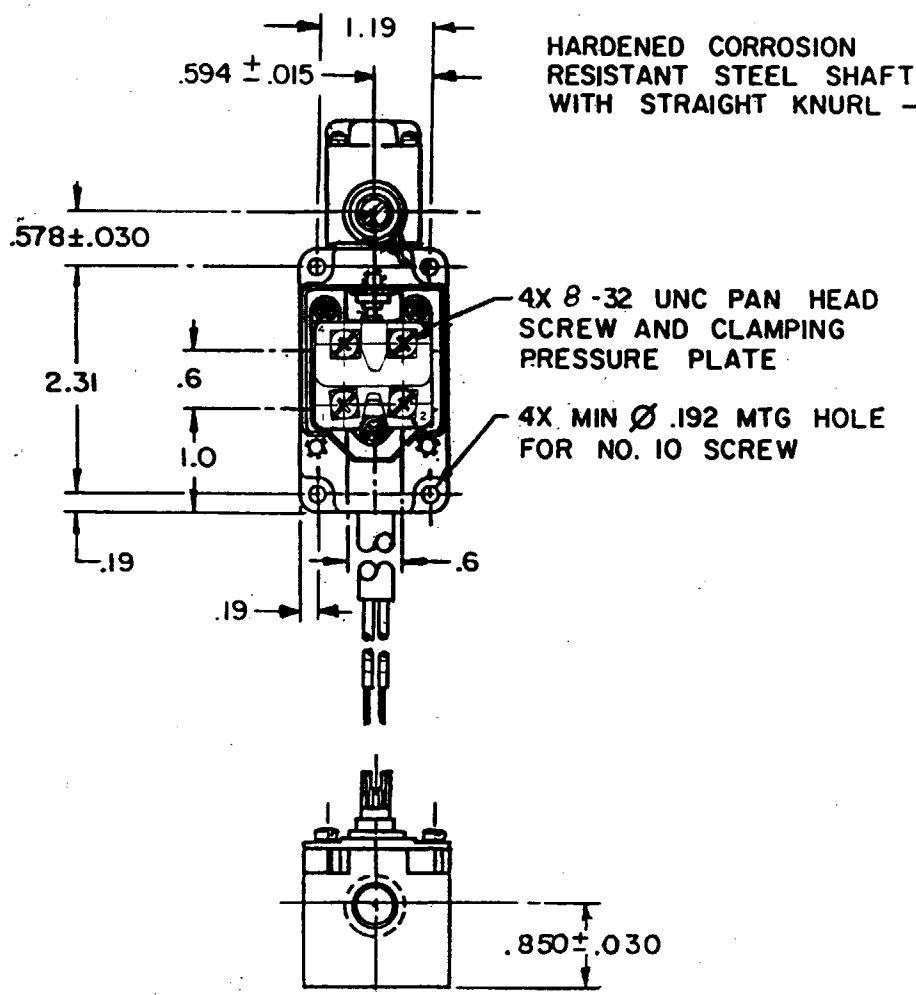
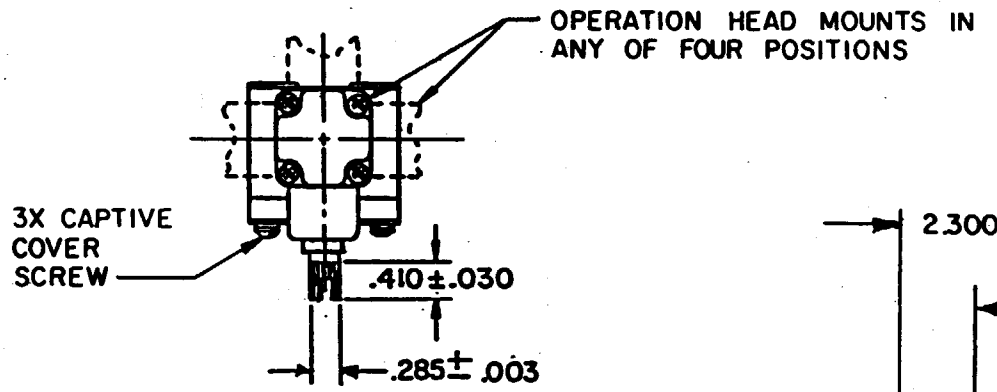
CHECK

G-R7 20 SEP 90

CHECK

SAV 17 SEP 90

FO-52851-B
DRAWN



NOTES
1 - PROVIDED WITH 16 GAGE, 2 CONDUCTOR TYPE SO CABLE

THIS DRAWING COVERS A PROPRIETARY ITEM AND IS THE PROPERTY OF MICRO SWITCH, A DIVISION OF HONEYWELL. THIS DRAWING IS NOT TO BE COPIED OR USED WITHOUT THE APPROVAL OF MICRO SWITCH.		SCALE 1/2 TO 1
DO NOT SCALE PRINT		
CHARACTERISTICS	ELECTRICAL DATA	UNLESS OTHERWISE SPECIFIED TOLERANCES ARE
OPERATING TORQUE ----- 3 IN LB MAX	CONTACT ARRANGEMENT (SEE CIRCUIT DIAGRAM)	ONE PLACE (.0) ± .030
	10A-120, 240, OR 480 VAC, 1/3 HP-120 VAC 3/4 HP-240 VAC; 0.8A-115 VDC; 0.4A-230 VDC .1A-550 VDC PILOT DUTY: 600 VAC MAX	TWO PLACE (.00) ± .015
		THREE PLACE (.000) ± .005
		ANGLES ±
		THIRD ANGLE PROJECTION
		WEIGHT
SWITCH-BASIC REPLACEMENT ----- 2MNI		

MICRO SWITCH
 FREEPORT, ILLINOIS, U.S.A.
 A DIVISION OF HONEYWELL
 FED. MFG. CODE 91929

SWITCH-ENCLOSED

CATALOG LISTING
6LS2-7

6LS2-7

M

DRAWING
 NUMBER

2

X

ISSUE

REPLACES

PR-18529

CHECK

CHECK

CHECK

CHECK

CHECK

CHECK

CHECK

CHECK

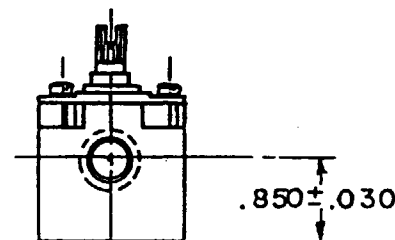
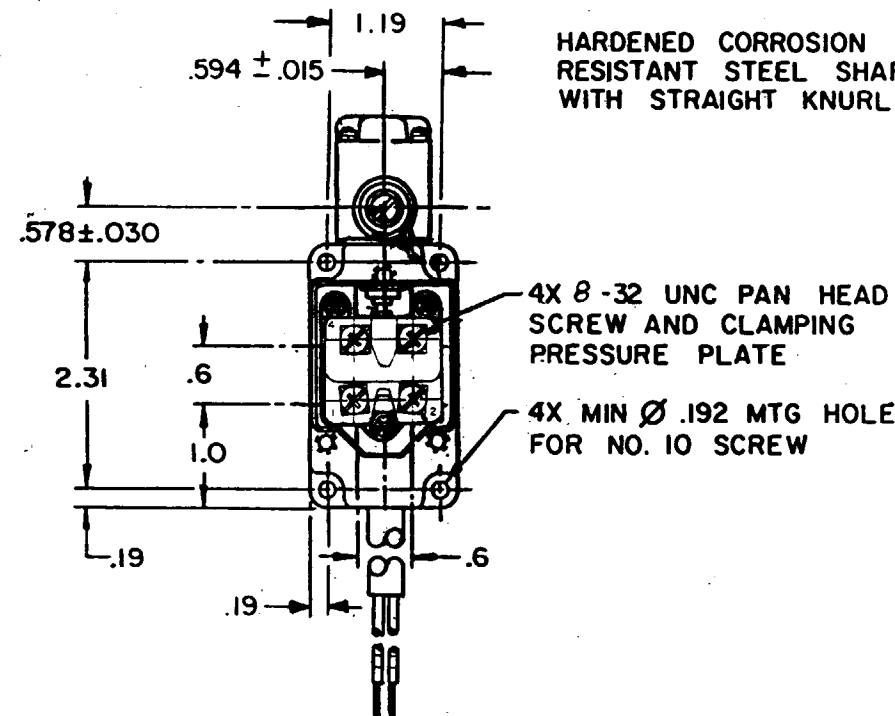
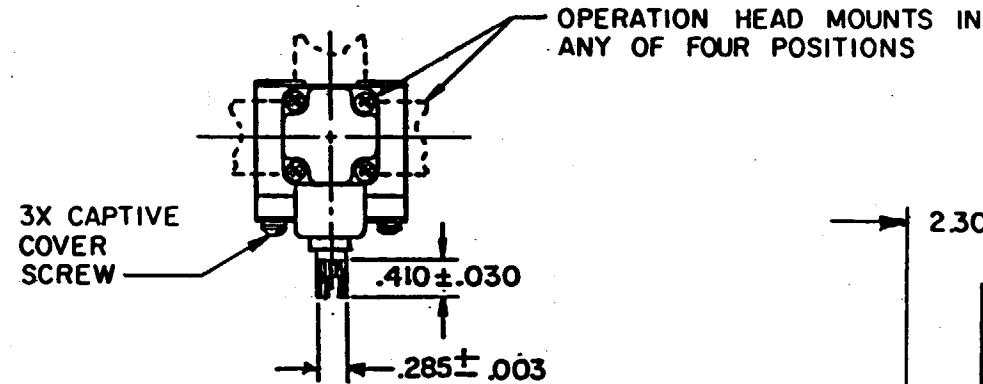
SAV

17 SEP 90

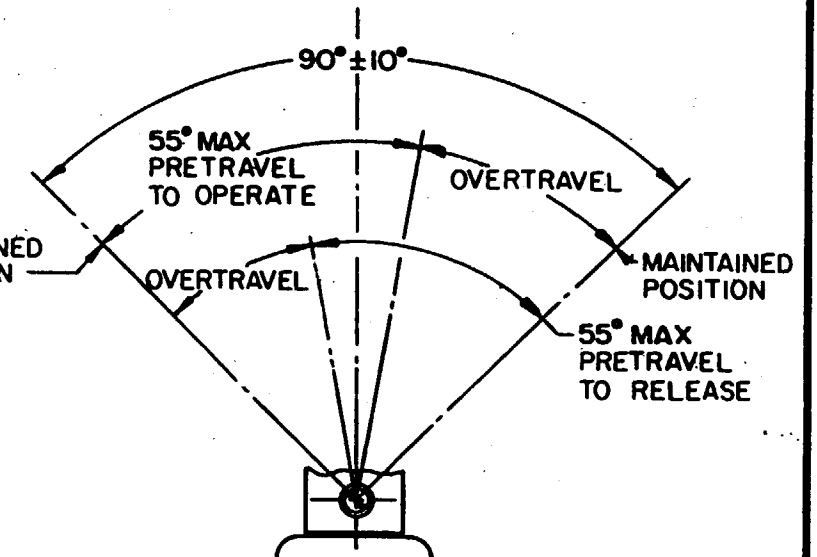
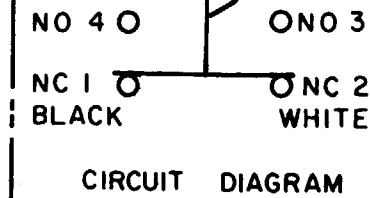
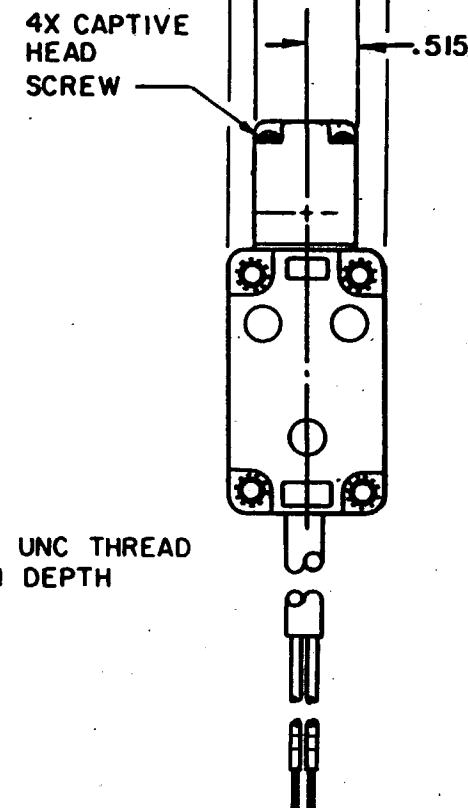
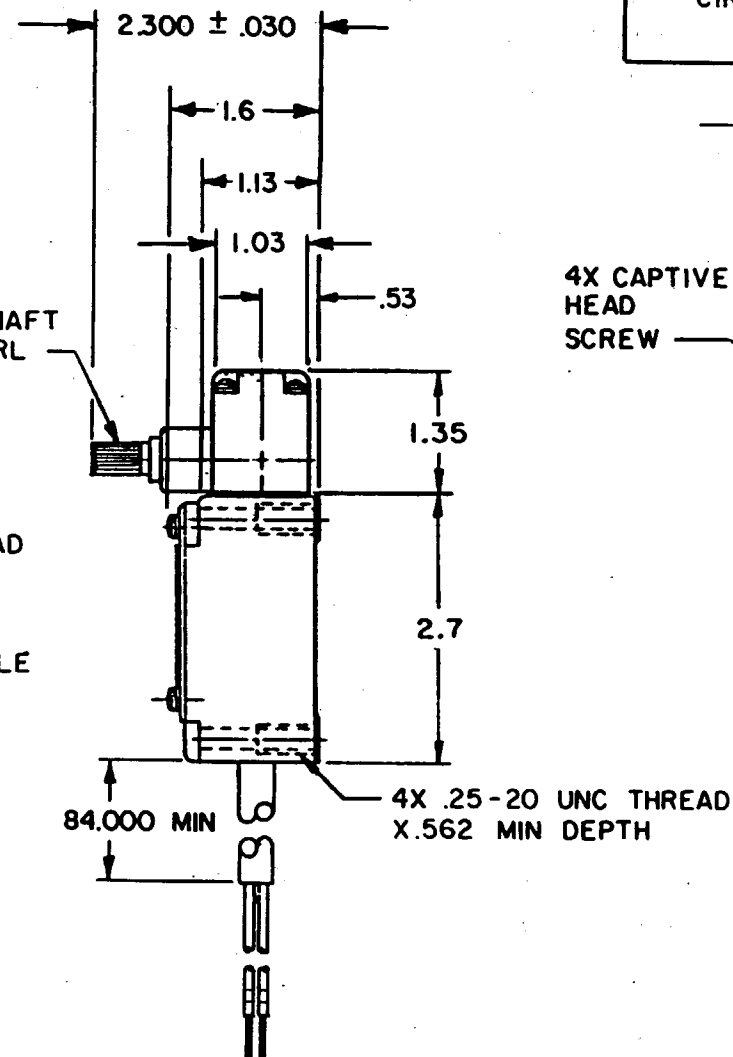
FO-52851-B

DRAWN

REVISIONS
 A CO-
 77031
 J B B
 22 DEC 93



HARDENED CORROSION RESISTANT STEEL SHAFT WITH STRAIGHT KNURL



NOTES

1 - PROVIDED WITH 16 GAGE, 2 CONDUCTOR TYPE SO CABLE

THIS DRAWING COVERS A PROPRIETARY ITEM AND IS THE PROPERTY OF MICRO SWITCH, A DIVISION OF HONEYWELL. THIS DRAWING IS NOT TO BE COPIED OR USED WITHOUT THE APPROVAL OF MICRO SWITCH

CHARACTERISTICS

OPERATING TORQUE ----- 3 IN LB MAX

SWITCH-BASIC REPLACEMENT ----- 2MNI

ELECTRICAL DATA

CONTACT ARRANGEMENT
 (SEE CIRCUIT DIAGRAM)

10A-120, 240, OR 480 VAC; 1/3 HP-120 VAC
 3/4 HP-240 VAC; 0.8A-115 VDC; 0.4A-230 VDC
 1A-550 VDC
 PILOT DUTY: 600 VAC MAX

SCALE 1/2 TO 1

DO NOT SCALE PRINT

UNLESS OTHERWISE SPECIFIED TOLERANCES ARE

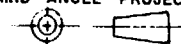
ONE PLACE (.0) ± .030

TWO PLACE (.00) ± .015

THREE PLACE (.000) ± .005

ANGLES ±

THIRD ANGLE PROJECTION



WEIGHT

Mouser Electronics

Authorized Distributor

Click to View Pricing, Inventory, Delivery & Lifecycle Information:

[Honeywell:](#)

[6LS2-7](#)