

CATALOG LISTING	KEYWAY POSITION		CENTER POSITION		OPPOSITE KEYWAY POSITION		
	C-NC	C-NO	C-NC	C-NO	C-NC	C-NO	
64AT20I-1	1 & 2	3 & 4	ALL	NONE	3 & 4	1 & 2	
64AT20I-3	1 & 2	3 & 4	NONE	NONE	3 & 4	1 & 2	
64AT20I-5	1 & 2 *	3 & 4 *	ALL	NONE	3 & 4	1 & 2	
64AT20I-7	1 & 2 *	3 & 4 *	ALL	NONE	3 & 4 *	1 & 2 *	
64AT20I-514	1 & 2	3 & 4	ALL	NONE	3 & 4 *	1 & 2 *	

* ASTERISK DENOTES MOMENTARY POSITION

64AT201 SERIES
CHART 1

N

DRAWING
NUMBER

9		6
X	X	X
ISSUE		

REVISIONS

A REINST
PR-11672

J A P
3 NOV 82

B	CO 52593
---	-------------

WJM
9 DEC 82

C C054000

J A P

19 OCT 83	
D	00:00:00

CU 58771
KAG

14 FEB 86

E C063228

TSK
25 MAR 88

F C072702

L J F
7 JUN 92

--	--

[illegible]

--	--

--	--

[illegible]

--	--

--	--

[illegible]

--	--

11

8-

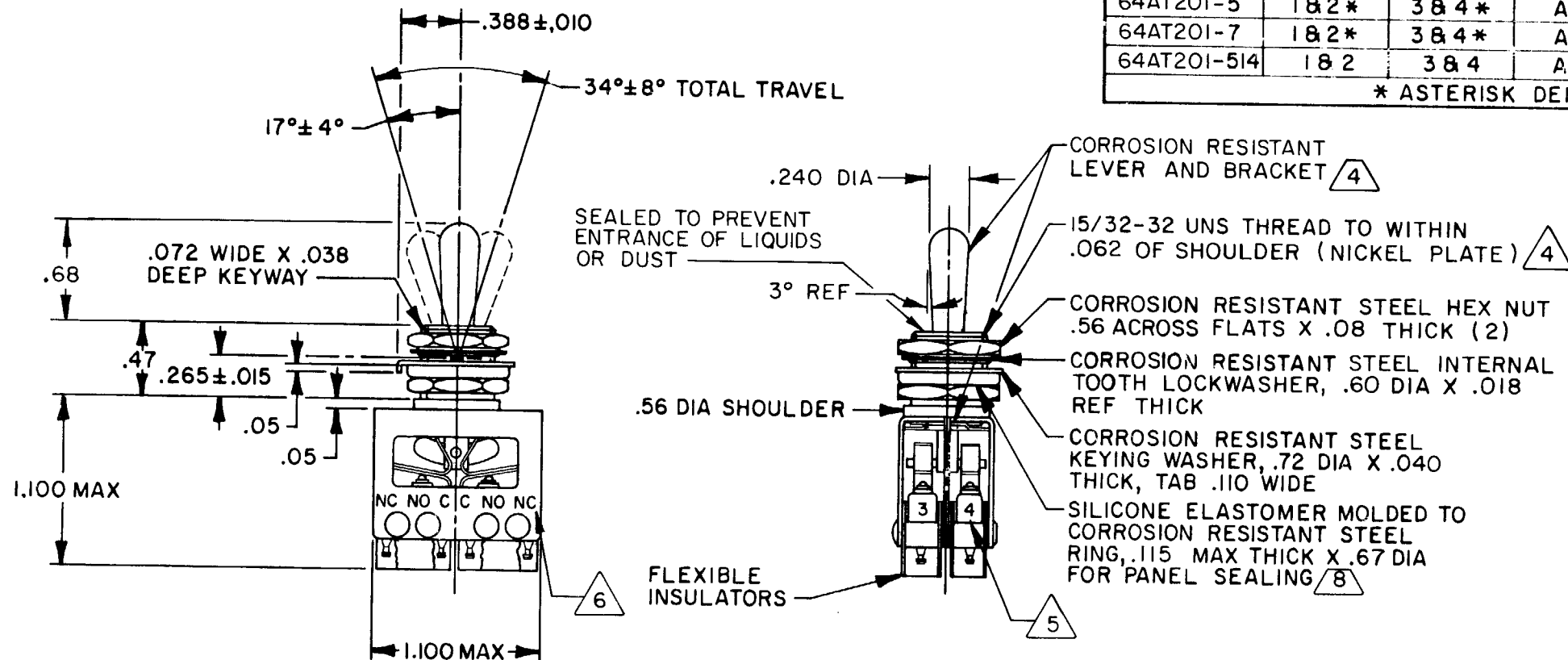
WM 851

-52- RA

FO

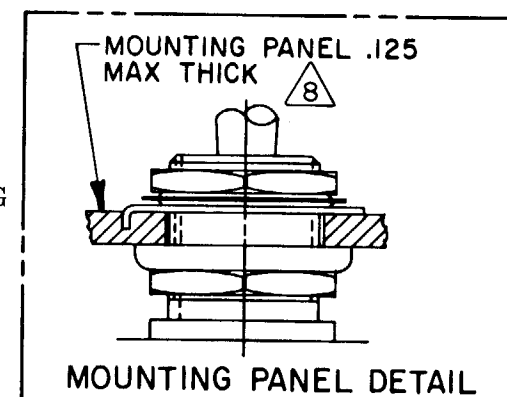
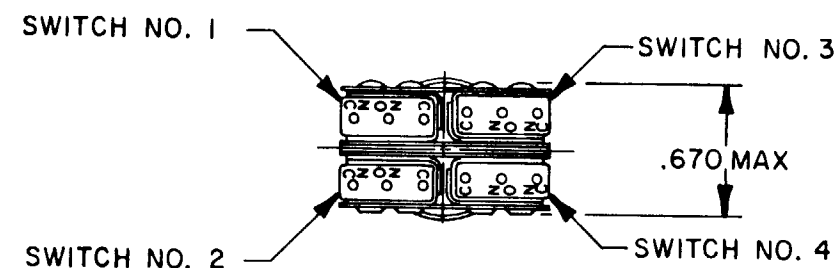
11

4

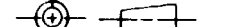


NOTES

- 1 - UNIT INCLUDES "SX" TYPE BASIC SWITCH (4) WHICH MEETS REQUIREMENTS OF MIL-S-8805/4
- 2 - SWITCHES DO NOT NECESSARILY OPERATE SIMULTANEOUSLY
- 3 - TERMINALS ARE PLATED FOR SOLDERING
- 4 - MATTE FINISH ON LEVER AND BUSHING
- 5 - SWITCH NUMBERS STAMPED ON END OF BASIC SWITCHES
- 6 - TERMINAL DESIGNATION STAMPED ON BOTH SIDES OF UNIT
- 7 - WHEN LEVER IS MOVED OUT OF A MAINTAINED POSITION, IT WILL RETURN OF ITS OWN ACCORD TO THE ORIGINAL POSITION OR THE ADJACENT POSITION. THE TOGGLE LEVER MAY HANG UP BETWEEN THE TWO ADJACENT POSITIONS ONLY BY EXERTING CONSIDERABLE EFFORT
- 8 - FOR PANEL SEAL TO BE EFFECTIVE MOUNTING HOLE IN PANEL SHOULD NOT EXCEED .500 DIA



Furnished under United States Government Contract No. . Shall not be either released outside the Government, or used, duplicated or disclosed in whole or in part for manufacture or procurement, without the written permission of MICRO SWITCH, A Division of Honeywell, except for: (I) emergency repair or overhaul work by or for the Government, where the item or process concerned is not otherwise reasonably available to enable timely performance of the work; or (II) release to a foreign government, as the interests of the United States may require; provided that in either case the release, use, duplication or disclosure hereof shall be marked on any reproduction hereof in whole or in part.

CHARACTERISTICS		ELECTRICAL DATA		DO NOT SCALE PRINT																														
		CONTACT ARRANGEMENT S P D T (4)		TOLERANCES APPLY TO DESIGN UNITS. CONVERSIONS ARE ONLY FOR REFERENCE. UNLESS NOTED, TOLERANCES ARE .1		ELECTRICAL RATINGS																												
				<table><tr><td>DIM. mm</td><td>TOL. mm/in</td><td>DIM. in</td><td>TOL. mm/in</td></tr><tr><td>NO PLACES</td><td>X</td><td>1/04</td><td></td></tr><tr><td>ONE PLACE</td><td>X,X</td><td>0.47/018</td><td>X X 0.87/03</td></tr><tr><td>TWO PLACES</td><td>X,X,X</td><td>0.38/015</td><td>X X 0.13/005</td></tr><tr><td>THREE PLACES</td><td>X,X,X,X</td><td>0.19/006</td><td>X XXX 0.13/005</td></tr><tr><td>ANGLES</td><td></td><td></td><td></td></tr></table>		DIM. mm	TOL. mm/in	DIM. in	TOL. mm/in	NO PLACES	X	1/04		ONE PLACE	X,X	0.47/018	X X 0.87/03	TWO PLACES	X,X,X	0.38/015	X X 0.13/005	THREE PLACES	X,X,X,X	0.19/006	X XXX 0.13/005	ANGLES								
DIM. mm	TOL. mm/in	DIM. in	TOL. mm/in																															
NO PLACES	X	1/04																																
ONE PLACE	X,X	0.47/018	X X 0.87/03																															
TWO PLACES	X,X,X	0.38/015	X X 0.13/005																															
THREE PLACES	X,X,X,X	0.19/006	X XXX 0.13/005																															
ANGLES																																		
				SI METRIC <input type="checkbox"/> US CUSTOMARY <input checked="" type="checkbox"/>		LOAD		SEA LEVEL		50,000 FT																								
				DESIGN UNITS <input type="checkbox"/>				28 Vdc		115 Vac, 60 Hz																								
				THIRD ANGLE PROJECTION 				(AMPERES)		(AMPERES)																								
				WEIGHT .07 LB APPROX		RESISTIVE		7		7																								
						INDUCTIVE		4		7																								
										28 Vdc																								
										(AMPERES)																								
										4																								
										9.5																								

Mouser Electronics

Authorized Distributor

Click to View Pricing, Inventory, Delivery & Lifecycle Information:

[Honeywell:](#)

[64AT201-1](#)