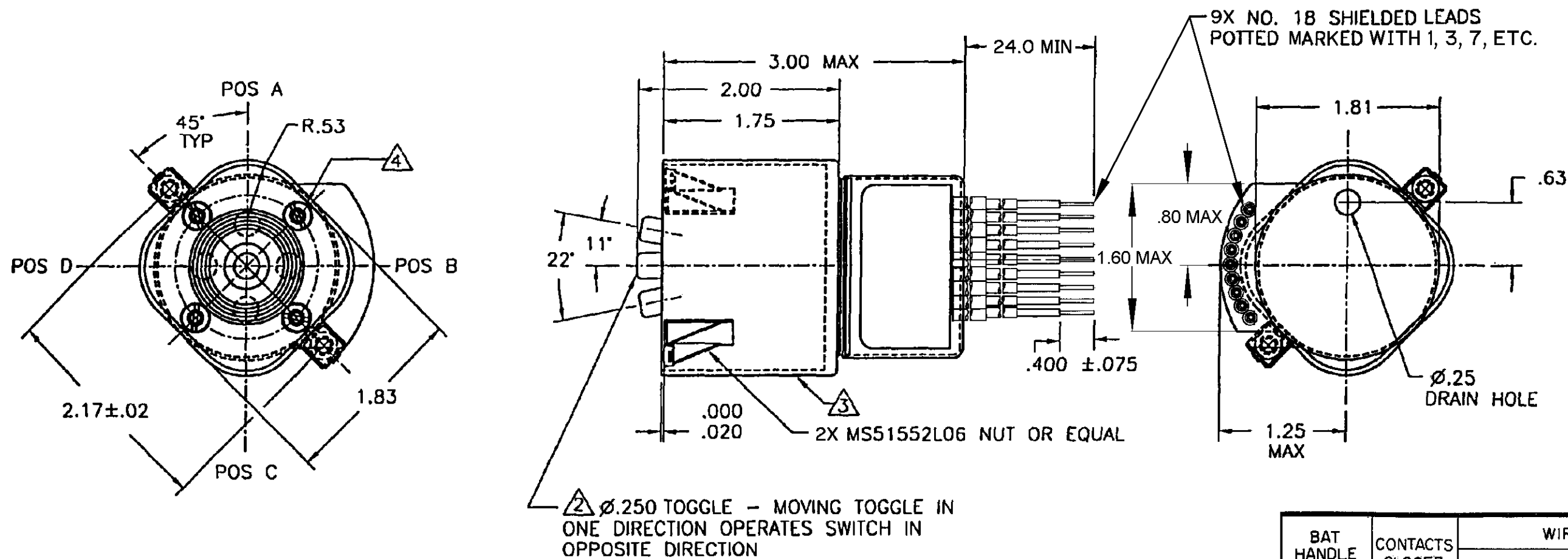


- NOTES
- 1 - 6X UNIT INCLUDES CATALOG LISTING 21SX TYPE BASIC SWITCHES
- 2 MOVING TOGGLE IN ONE DIRECTION OPERATES SWITCH OR SWITCHES IN OPPOSITE DIRECTION
- 3 CUP IS WATER TIGHT
- 4 SCREWS SEALED IN PLACE
- 5 - (FOUR MOMENTARY POSITIONS INDICATED BY POS A, POS B, POS C AND POS D)



ANSI Y14.5M-1982 APPLIES

THIS DRAWING COVERS A PROPRIETARY ITEM AND IS THE PROPERTY OF MICRO SWITCH, A DIVISION OF HONEYWELL. THIS DRAWING IS NOT TO BE COPIED OR USED WITHOUT THE APPROVAL OF MICRO SWITCH

CHARACTERISTICS		ELECTRICAL DATA	
OPERATING FORCE ----- 3 - 5 LBS		CONTACT ARRANGEMENT	
TEMPERATURE ----- -67°F TO +160°F			
	28 VDC	115VDC 400CPS	
RESISTIVE	5 AMPS	5 AMPS	
INDUCTIVE	3 AMPS	5 AMPS	
MOTOR		3.3 AMPS	

THIRD ANGLE PROJECTION	
SCALE	NONE
DO NOT SCALE PRINT	
UNLESS OTHERWISE SPECIFIED TOLERANCES ARE	
ONE PLACE	(.0) ±.030
TWO PLACE	(.00) ±.015
THREE PLACE	(.000) ±.005
ANGLES	± 2°
WEIGHT	

BAT HANDLE POSITION	CONTACTS CLOSED	WIRING DIAGRAM
A	7 TO 9 10 TO 12	
B	1 TO 3	
C	7 TO 21 10 TO 24	
D	1 TO 15	

Mouser Electronics

Authorized Distributor

Click to View Pricing, Inventory, Delivery & Lifecycle Information:

[Honeywell:](#)

[4TF3-2](#)