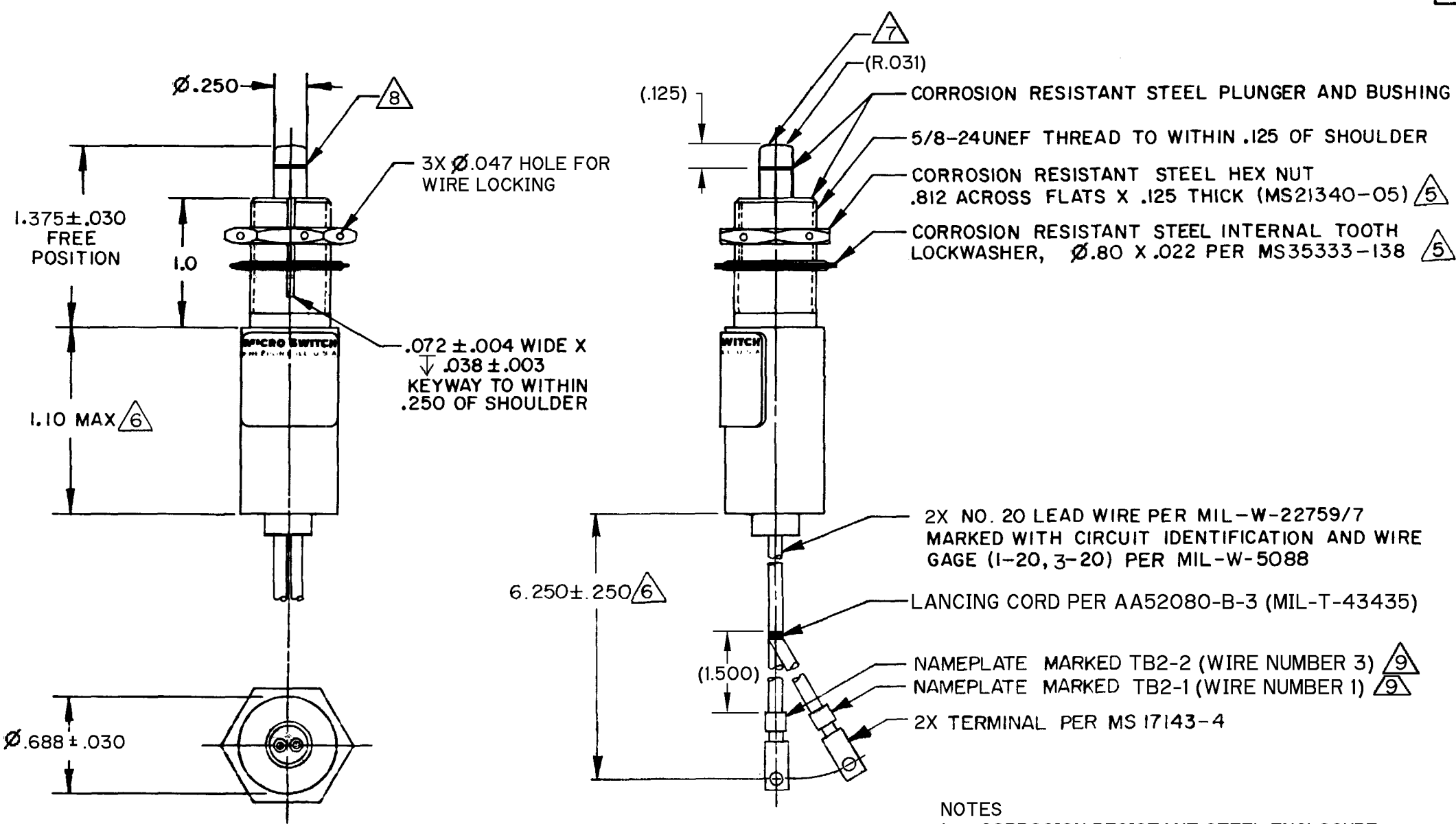
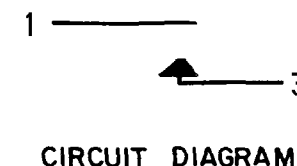


**MICRO SWITCH**  
FREEPORT, ILLINOIS, U.S.A.  
A DIVISION OF HONEYWELL  
FED. MFG. CODE 91929

## SWITCH-ENCLOSED

CATALOG LISTING  
**402EN123-B**  
CUSTOMER PART NUMBER  
7101519-2



### NOTES

- 1 - CORROSION RESISTANT STEEL ENCLOSURE
- 2 - SWITCH SEALED PER MIL-PRF-8805, SYMBOL 4
- 3 - CIRCUIT DIAGRAM, CATALOG LISTING, DATE CODE CUSTOMER #53711-7101519-2 PLUS CURRENT REVISION LETTER AND FEDERAL MANUFACTURING CODE ARE SHOWN ON NAMEPLATE
- 4 - COINCIDENCE OF OPERATING AND RELEASING POINTS:  $.010$  OF PLUNGER TRAVEL
- 5 - HARDWARE MAY BE PACKAGED UNASSEMBLED PER MIL-PRF-8805
- 6 - THIS DIMENSION EXCLUDES THE RESILENT POTTING MATERIAL ON THE BOTTOM OF THE SWITCH
- 7 - LOW FRICTION NON-METAL SURFACE
- 8 - PLUNGER ASSEMBLY RESTRAINED FROM ROTATING
- 9 - HEAT SHRINK TUBING PER M23053/5-107-9

ANSI Y14.5M-1982 APPLIES

THIS DRAWING COVERS A PROPRIETARY ITEM AND IS THE PROPERTY OF MICRO SWITCH. A DIVISION OF HONEYWELL. THIS DRAWING IS NOT TO BE COPIED OR USED WITHOUT THE APPROVAL OF MICRO SWITCH.

CHARACTERISTICS		ELECTRICAL DATA	
OPERATING FORCE ——— 3 - 6 LB		CONTACT ARRANGEMENT	
FULL OVERTRAVEL FORCE ——— 17 LB MAX		1X S P N O	
RELEASE FORCE ——— 2 LB MIN		28 VDC	
PRETRAVEL ——— .040 MAX		SEA LEVEL 50,000 FT.	
DIFFERENTIAL TRAVEL ——— .020 MAX		RES 7 7	
OVERTRAVEL ——— .250 MIN		IND 4 2.5	
		MOTOR 4	

SCALE FULL	
DO NOT SCALE PRINT	
TOLERANCES	
APPLY TO DESIGN UNITS. CONVERSIONS ARE ONLY FOR REFERENCE. UNLESS NOTED, TOLERANCES ARE:	
NO PLACES	IN
ONE PLACE	IN
TWO PLACES	IN
THREE PLACES	IN
ANGLES	IN
DESIGN UNITS	US CUSTOMARY
THIRD ANGLE PROJECTION	
WEIGHT 30 OZ MAX	

# Mouser Electronics

Authorized Distributor

Click to View Pricing, Inventory, Delivery & Lifecycle Information:

[Honeywell:](#)

[402EN123-B](#)