

MICRO SWITCH

A DIVISION OF MINNEAPOLIS HONEYWELL REGULATOR COMPANY
POMEROY, ILLINOIS

FED. MFR. CODE 91920

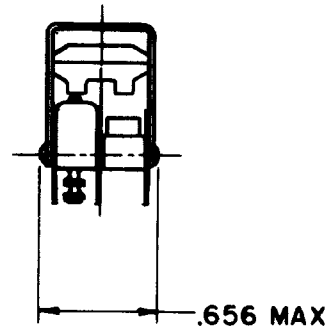
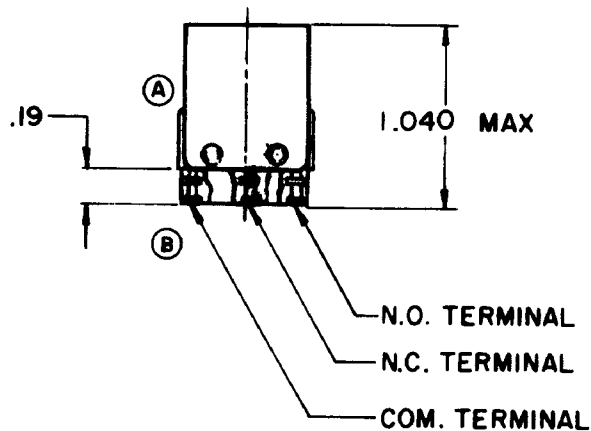
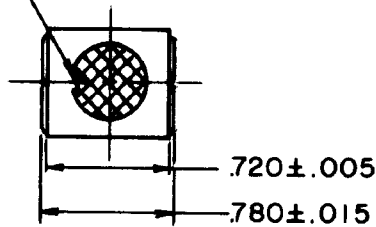
SWITCH - UNIT

CATALOG LISTING

2D100

THIS DRAWING COVERS A PROPRIETARY ITEM AND IS THE PROPERTY OF MICRO SWITCH, A DIVISION OF MINNEAPOLIS-HONEYWELL REGULATOR CO. THIS DRAWING IS NOT TO BE COPIED OR USED WITHOUT THE APPROVAL OF MICRO SWITCH

KEYING TAB FOR ORIENTATION OF SWITCH
UNITS WITH OPERATOR-INDICATOR UNITS



NOTE -

- 1- "T2" TERMINALS ARE PLATED FOR SOLDERING
- © 2- UNIT INCLUDES "ISM" TYPE BASIC SWITCH (1)

85.4

2D100

M

DRAWING
NUMBER

12

84

REVISIONS

A	CORR	NO	7-29-61
B	CORR	NO	7-29-61
C	DO 17103	NO	10-17-62
D	CORR	NO	10-17-62

REPLACES

RELEASE NO.

CHECK

60

22

JUL

60

DC

22

JUL

60

DC

22

JUL

60

DC

22

JUL

60

DC

22

JUL

60

DC

22

JUL

60

DC

22

JUL

60

DC

22

JUL

60

DC

22

JUL

60

DC

22

JUL

60

DC

22

JUL

60

DRAWN

L S D

22 JULY 60

CHECK

Mouser Electronics

Authorized Distributor

Click to View Pricing, Inventory, Delivery & Lifecycle Information:

[Honeywell:](#)

[2D100](#)