



MICRO SWITCH
FREEPORT, ILLINOIS U S A
A DIVISION OF HONEYWELL

FED. MFG. CODE 91929

OPERATOR INDICATOR UNITS BARRIER MOUNT

CATALOG LISTING
2C200 SERIES

CHART 5

THIS DRAWING COVERS A PROPRIETARY ITEM AND IS THE PROPERTY OF MICRO SWITCH, A DIVISION OF MINNEAPOLIS-HONEYWELL REGULATOR CO. THIS DRAWING IS NOT TO BE COPIED OR USED WITHOUT THE APPROVAL OF MICRO SWITCH.

2C200 SERIES
CHART 5

M

DRAWING
NUMBER

3

ISSUE

REPLACES

RELEASE NO. SR11539
SR11539

CHECK

18 JAN 66

CHECK

18 JAN 66

CHECK

18 JAN 66

CHECK

18 JAN 66

CHECK

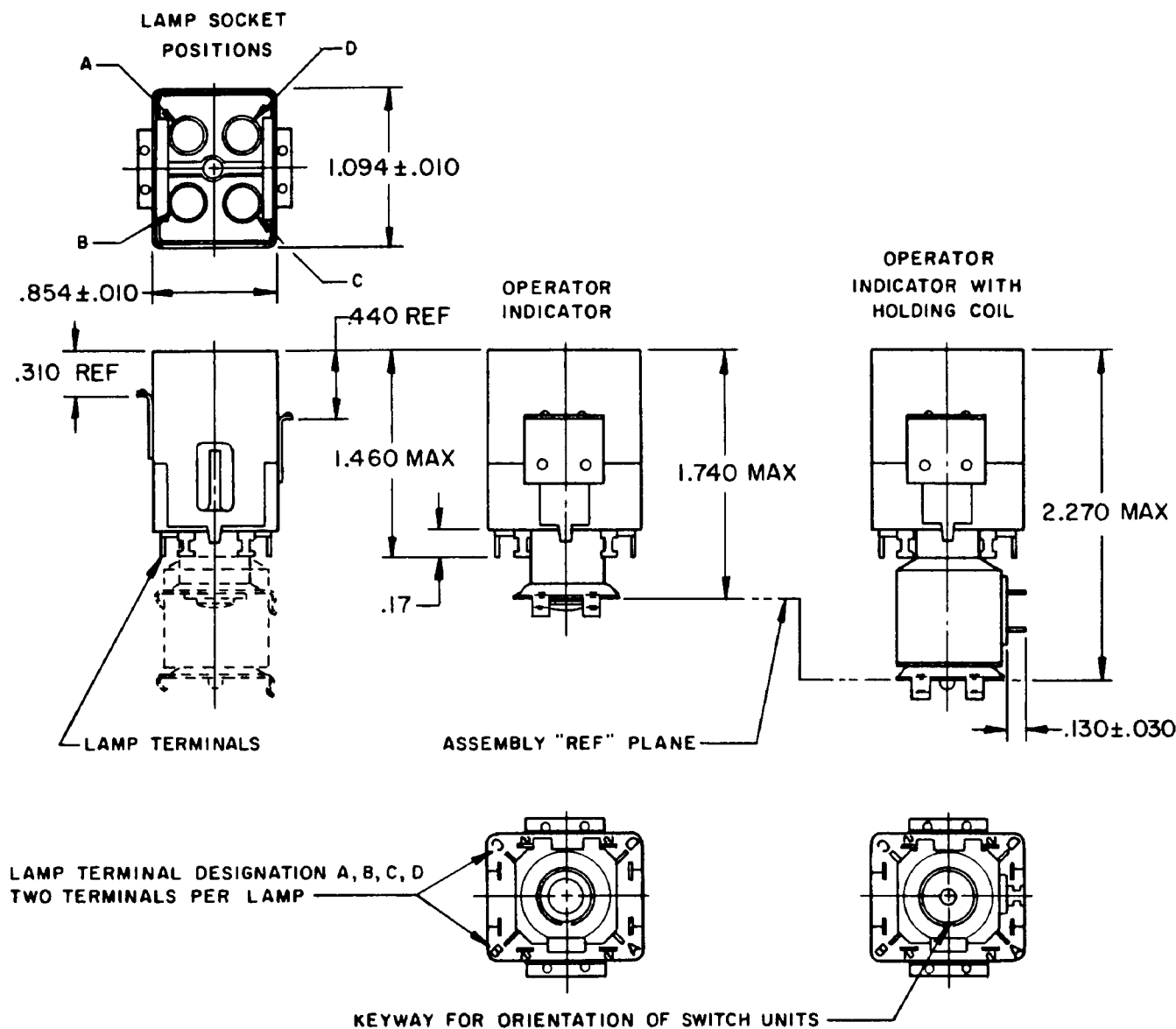
18 JAN 66

CHECK

18 JAN 66

CHECK

18 JAN 66



LAMP TERMINAL DESIGNATION A, B, C, D
TWO TERMINALS PER LAMP

- NOTE—
- 1 - TERMINALS ARE PLATED FOR SOLDERING
 - 2 - RELAMPABLE FROM FRONT OF PANEL WITHOUT TOOLS

LAMP SOCKET POSITIONS	CATALOG LISTINGS				SCALE
	OPERATOR INDICATOR	OPERATOR INDICATOR WITH HOLDING COIL			DO NOT SCALE PRINT
		6 VDC	28 VDC	48 VDC	
A, C	2C 207	(A)	2C 231	(A)	UNLESS OTHERWISE SPECIFIED DIMENSIONS ARE IN INCHES TOLERANCES ARE: ONE PLACE (.01) $\pm .030$ TWO PLACE (.00) $\pm .015$ THREE PLACE (.000) $\pm .005$ ANGLES \pm
A, B, C, D	2C 209	(A)	2C 233	(A)	
					WEIGHT

FORMTEK

Mouser Electronics

Authorized Distributor

Click to View Pricing, Inventory, Delivery & Lifecycle Information:

[Honeywell:](#)

[2C233](#) [2C231](#)