

21EN51-6B

M

DRAWING NUMBER

ISSUE

2

6

REVISIONS

A

CO44351

J A P

17 SEPT 79

B

CO47573

PART 4

R J H

8 AUG 80

C

PR-11379

K A G

6 AUG 82

D

CO52696

J A P

14 JAN 83

E

CO53330

J A P

5 MAY 83

FO-32851-A

DRAWN

J A P

17 SEPT 79

CHECK

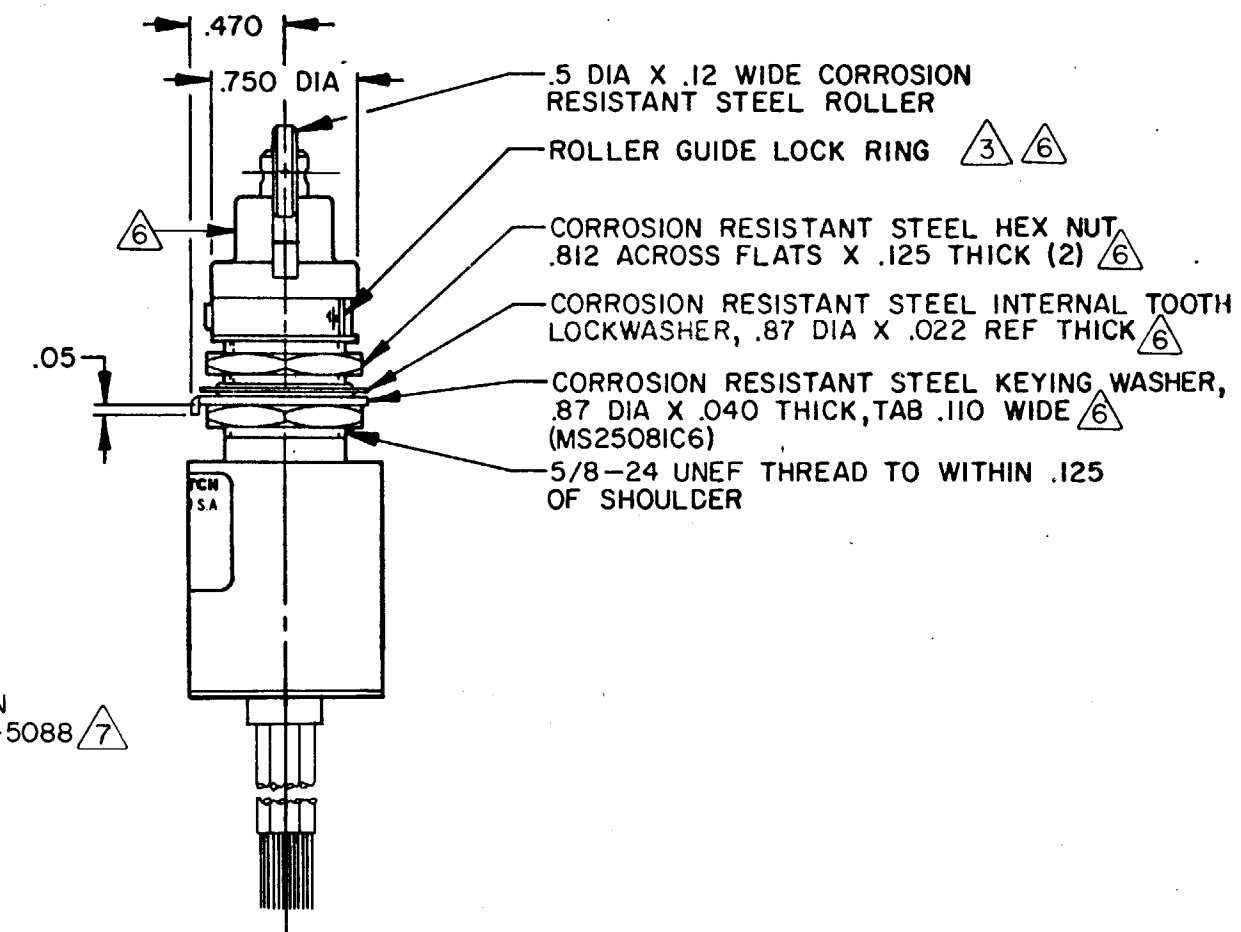
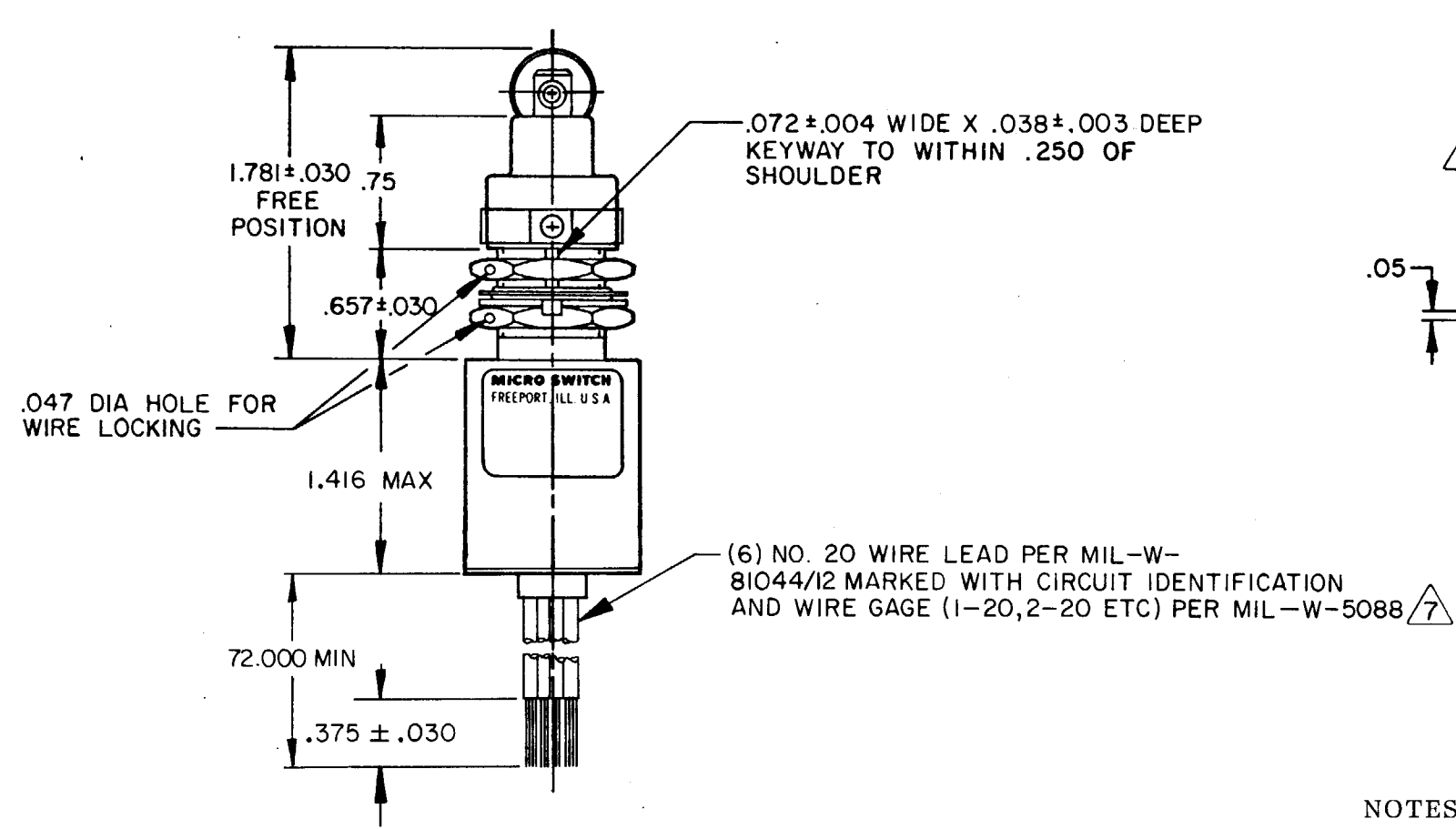
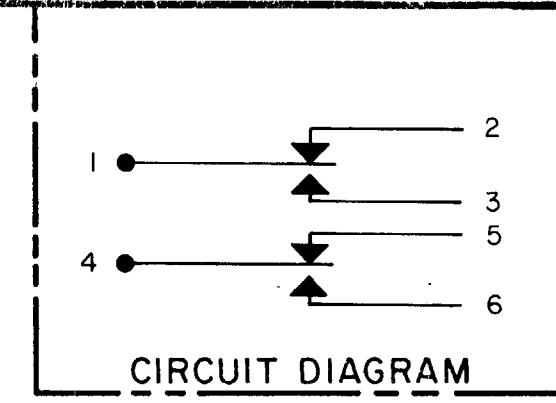
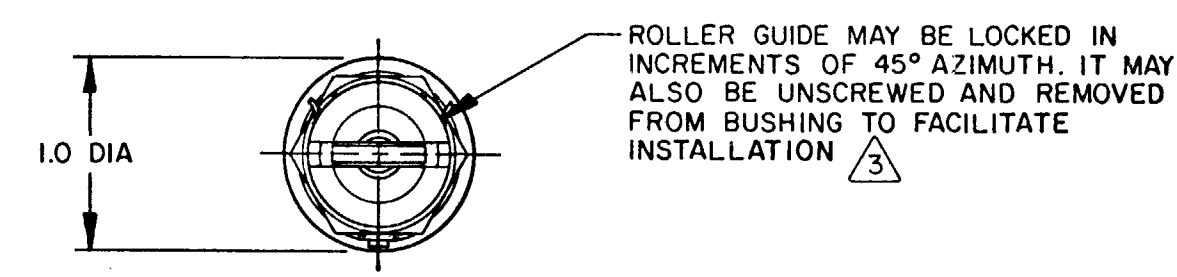
RELEASE NO. PR-11379

REPLACES

MICRO SWITCH
FREEPORT ILLINOIS U.S.A.
A DIVISION OF HONEYWELL
FED. MFG. CODE 91929

SWITCH - ENCLOSED

CATALOG LISTING
21EN51-6B



- NOTES
- 1 - CORROSION RESISTANT STEEL ENCLOSURE
 - 2 - SWITCH SEALED PER MIL-S-8805 SYMBOL 4
 - ³ TO ADJUST ROLLER DIRECTION, REMOVE ROLLER GUIDE LOCK RING, SCREW ROLLER GUIDE DOWN AS FAR AS POSSIBLE, THEN UNSCREW TO DESIRED DIRECTION. SECURE BY REPLACING ROLLER GUIDE LOCK RING
 - 4 - CIRCUIT DIAGRAM AND CATALOG LISTING ARE SHOWN ON NAMEPLATE
 - 5 - COINCIDENCE OF OPERATING AND RELEASING POINTS: .010 OF PLUNGER TRAVEL
 - ⁶ HARDWARE MAY BE PACKAGED UNASSEMBLED PER MIL-S-8805
 - 7 END OF WIRES IS SOLDER DIPPED

THIS DRAWING COVERS A PROPRIETARY ITEM AND IS THE PROPERTY OF MICRO SWITCH, A DIVISION OF HONEYWELL. THIS DRAWING IS NOT TO BE COPIED OR USED WITHOUT THE APPROVAL OF MICRO SWITCH.		THIRD ANGLE PROJECTION	SCALE FULL
DO NOT SCALE PRINT		TOLERANCES	
APPLY TO DESIGN UNITS. CONVERSIONS ARE ONLY FOR REFERENCE. UNLESS NOTED, TOLERANCES ARE 2		NO PLACES X 1/.04	
ONE PLACE X,X 0.4/.018		X,X 0.25/.014	
TWO PLACES X,X,X 0.15/.008		X,X,X 0.15/.008	
THREE PLACES X,X,X,X 0.15/.008		X,X,X,X 0.15/.008	
ANGLES		SI METRIC	
DESIGN UNITS		US CUSTOMARY	
RAW MATERIAL-COMMERCIAL STANDARD		MICRO SWITCH STANDARDS APPLY	
DIMENSIONS ARE TO BE MET BEFORE		PROTECTIVE COATINGS ARE APPLIED	
WEIGHT 8.9 OZ MAX			
CHARACTERISTICS		ELECTRICAL DATA	
OPERATING FORCE ----- 3-6 LB		CONTACT ARRANGEMENT	
FULL OVERTRAVEL FORCE ----- 17 LB MAX		S P D T (2)	
RELEASE FORCE ----- 2 LB MIN		28 VDC	
PRETRAVEL ----- .040 MAX		SEA LEVEL	
DIFFERENTIAL TRAVEL ----- .020 MAX		50,000 FT.	
OVERTRAVEL ----- .250 MIN		LOAD	
		RES	
		IND	
		MOTOR	
		LAMP	

Mouser Electronics

Authorized Distributor

Click to View Pricing, Inventory, Delivery & Lifecycle Information:

[Honeywell:](#)

[21EN51-6B](#)