

MICRO SWITCH

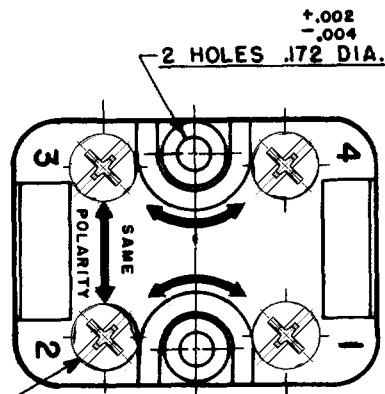
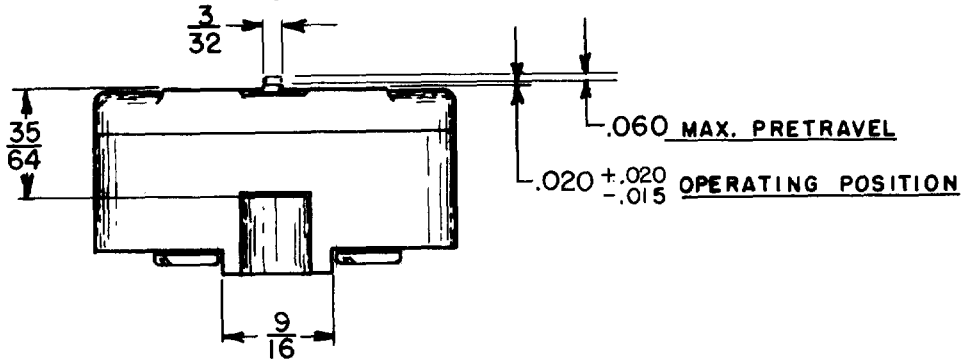
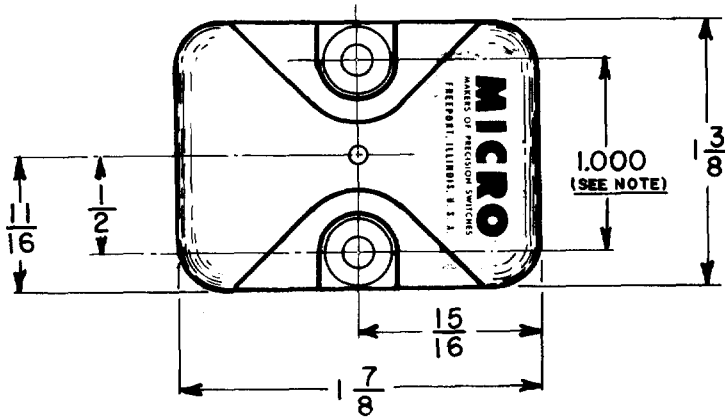
a Honeywell Division

FED. MF6 CODE 91929

SWITCH - BASIC

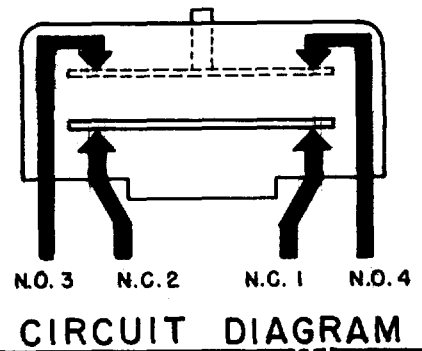
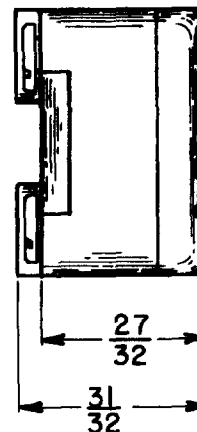
CATALOG LISTING

IMNI



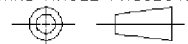
NOTE

1 - MOUNTING HOLES WILL ACCEPT NO. 8 SCREWS ON 1.000 ± .002 CENTERS



THIS DRAWING COVERS A PROPRIETARY ITEM AND IS THE PROPERTY OF MICRO SWITCH, A DIVISION OF HONEYWELL. THIS DRAWING IS NOT TO BE COPIED OR USED WITHOUT THE APPROVAL OF MICRO SWITCH.

THIRD ANGLE PROJECTION



CHARACTERISTICS	ELECTRICAL DATA	SCALE FULL	DO NOT SCALE PRINT
OPERATING FORCE-----12-20 OZ.	CONTACT ARRANGEMENT SEE CIRCUIT DIAGRAM	UNLESS OTHERWISE SPECIFIED TOLERANCES ARE	
RELEASE FORCE -----6 OZ. MIN.	10 A-120,240,480 OR 600 VAC; 1/2 HP-120 VAC, 1 H.P.-240 VAC, 0.8 A-115 VDC, 0.4 A-230 VDC PILOT DUTY RATING: 600 VAC MAX.	ONE PLACE (.)	±.030
DIFFERENTIAL TRAVEL---.020±.008		TWO PLACE (.00)	±.015
OVERTRAVEL-----.010 MIN.		THREE PLACE (.000)	±.005
		ANGLES	±
		WEIGHT	

CATALOG LISTING

IMNI

REPLACES

RELEASE NO. PR-3259

PAGE 1 OF 1

ISSUE

6

REVISIONS

A

CO-73287M

6JW

18 MAY 95

CHECK

25 MAY 95

JJA

CHECK

18 MAY 95

GJW

FORMTEK

DRAWN

Mouser Electronics

Authorized Distributor

Click to View Pricing, Inventory, Delivery & Lifecycle Information:

[Honeywell:](#)

[1MN1](#)