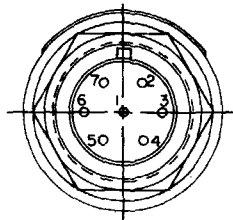
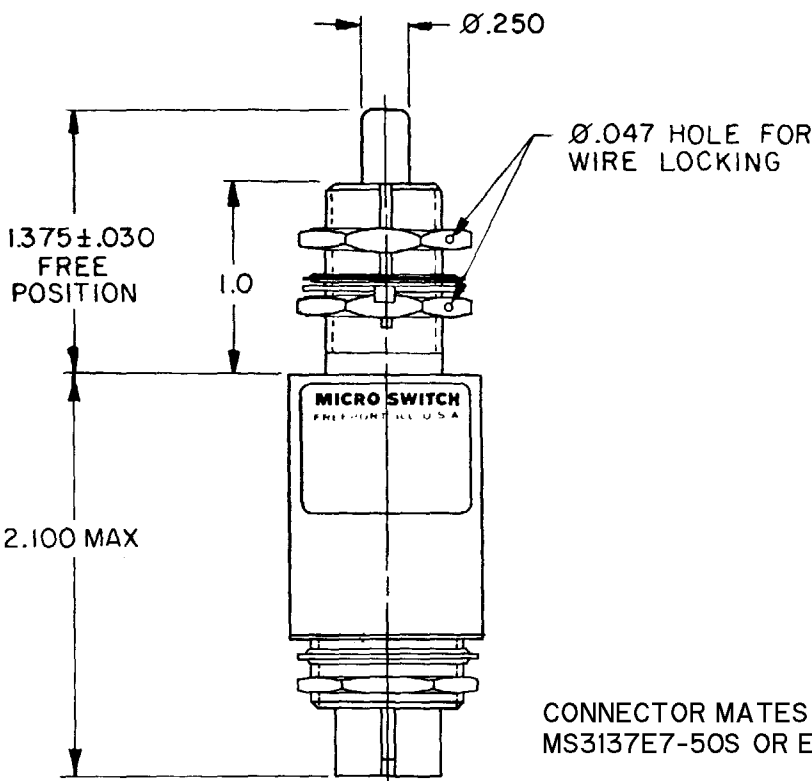
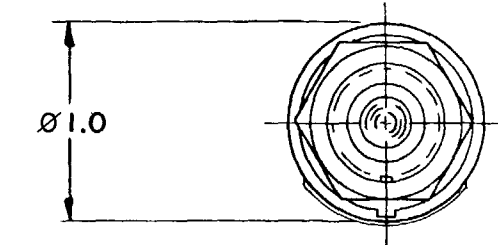
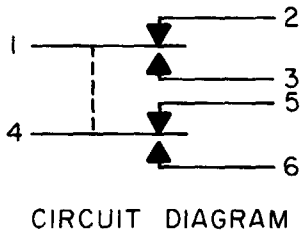


CATALOG LISTING
1EN543-R
PAGE 1 OF 1
M
11
REVISIONS
A CO 44351
CEB 25 JUN 79
B PR 8763
TRF 10 MAY 80
C C047573
JAP 5 AUG 80
D C080689
JAS 25 JUN 98
E CO-93970
SAV 14 JAN 99
F 200913
DLT 04 AUG 00
FORMTEK
DRAWN
CEB 25 JUNE 79
CHECK
CEB 12 JULY 79
CHECK
CEB

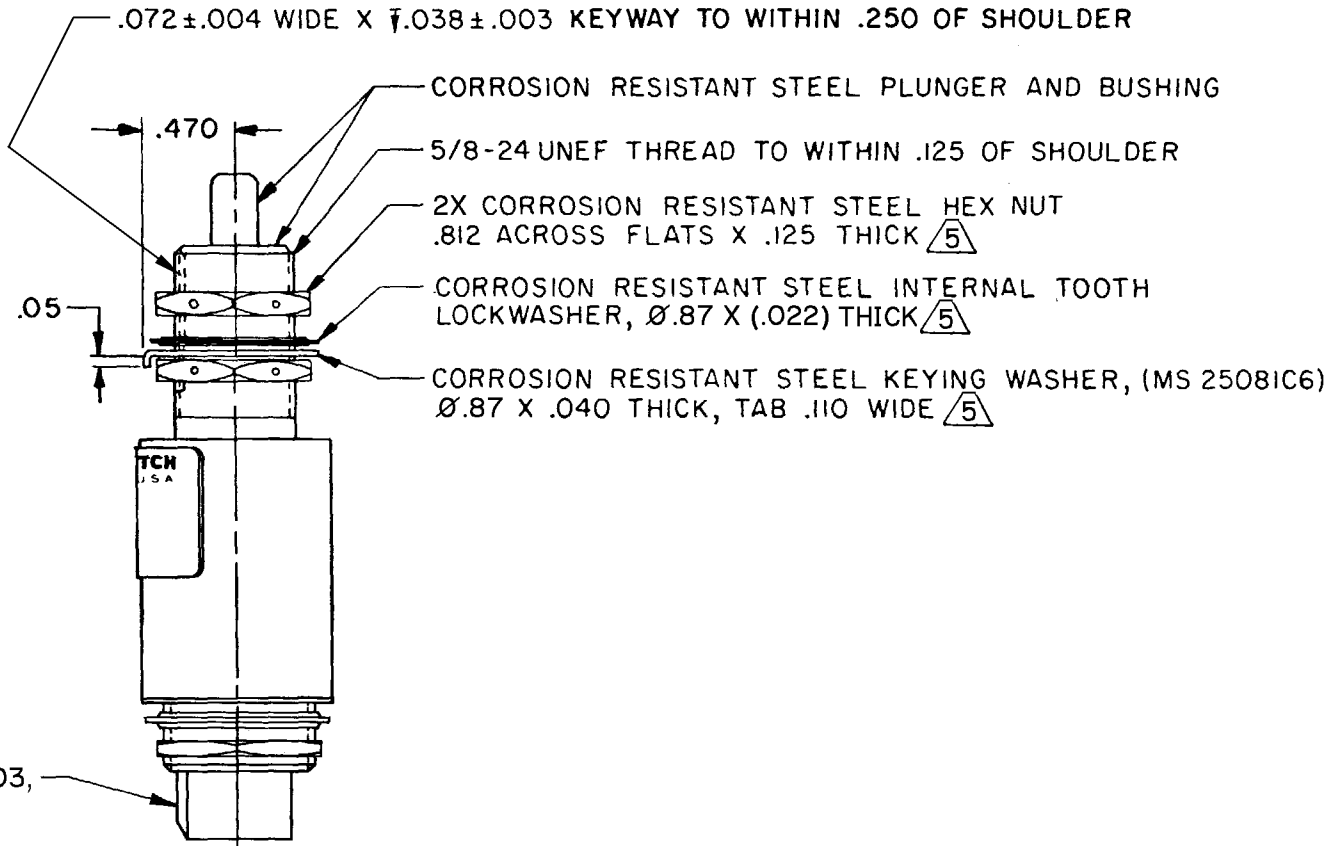
MICRO SWITCH
FREEPORT ILLINOIS U S A
A DIVISION OF HONEYWELL
FED. MFG. CODE 91929

SWITCH - ENCLOSED

CATALOG LISTING
1EN543-R



CONNECTOR MATES WITH MIL-C-81703,
MS3137E7-50S OR EQUIVALENT



- NOTES**
- 1 - CORROSION RESISTANT STEEL ENCLOSURE
 - 2 - SWITCH SEALED PER MIL-PRF-8805 SYMBOL 4
 - 3 - CIRCUIT DIAGRAM, DATE CODE, FED. MFG. CODE AND CATALOG LISTING ARE SHOWN ON NAMEPLATE
 - 4 - COINCIDENCE OF OPERATING AND RELEASING POINTS: .010 OF PLUNGER TRAVEL
 - 5 - HARDWARE MAY BE PACKAGED UNASSEMBLED PER MIL-PRF-8805

THIS DRAWING COVERS A PROPRIETARY ITEM AND IS THE PROPERTY OF MICRO SWITCH, A DIVISION OF HONEYWELL. THIS DRAWING IS NOT TO BE COPIED OR USED WITHOUT THE APPROVAL OF MICRO SWITCH.

THIRD ANGLE PROJECTION

SCALE FULL

DO NOT SCALE PRINT

CHARACTERISTICS	
OPERATING FORCE-----	3-6 LB
FULL OVERTRAVEL FORCE-----	17 LB MAX
RELEASE FORCE-----	2 LB MIN
PRETRAVEL-----	.040 MAX
DIFFERENTIAL TRAVEL-----	.020 MAX
OVERTRAVEL-----	.250 MIN

ELECTRICAL DATA		
CONTACT ARRANGEMENT 2X S P D T		
LOAD	28 VDC	
	SEA LEVEL	50,000 FT.
RES	4	4
IND	2	2
MOTOR	4	

TOLERANCES				
APPLY TO DESIGN UNITS. CONVERSIONS ARE ONLY FOR REFERENCE. UNLESS NOTED, TOLERANCES ARE ±				
	DIM. mm	TOL. mm/in	DIM. in	TOL. mm/in
NO PLACES	X	1/.04	X	
ONE PLACE	X,X	0.47/016	X,X	0.87/03
TWO PLACES	X,X,X	0.157/006	X,X,X	0.38/015
THREE PLACES			X,X,X,X	0.13/005
ANGLES				
DESIGN UNITS	<input type="checkbox"/> SI METRIC		<input checked="" type="checkbox"/> US CUSTOMARY	
RAW MATERIAL-COMMERCIAL STANDARD MICRO SWITCH STANDARDS APPLY				
DIMENSIONS ARE TO BE MET BEFORE PROTECTIVE COATINGS ARE APPLIED				
WEIGHT		5.0 OZ MAX		

ANSI Y14.5M-1982 APPLIES

Mouser Electronics

Authorized Distributor

Click to View Pricing, Inventory, Delivery & Lifecycle Information:

[Honeywell:](#)

[1EN543-R](#)