

CATALOG LISTING
1EN1-11

1EN1-11

CATALOG LISTING

N

10

| | |
|-----------|----------------|
| REVISIONS | |
| A | CO- 77504-A |
| S A V | |
| 15 MAR 94 | |

CHECK

CHECK

CHECK

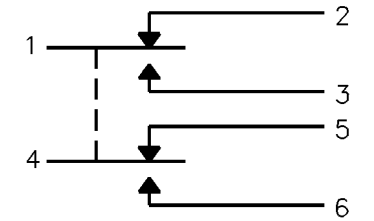
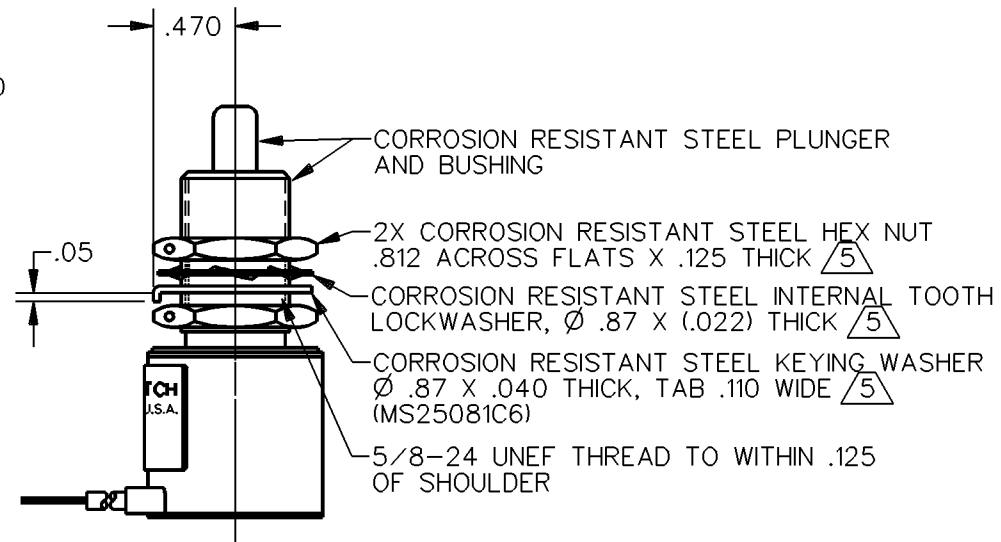
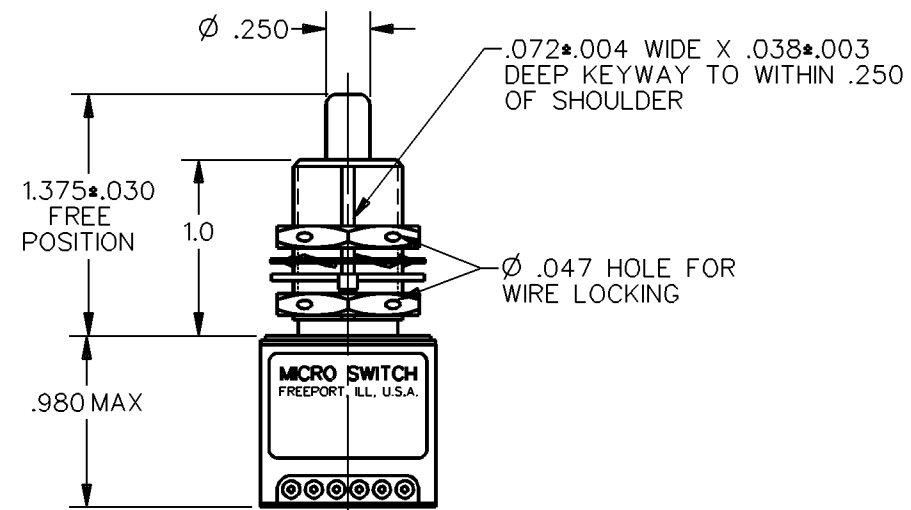
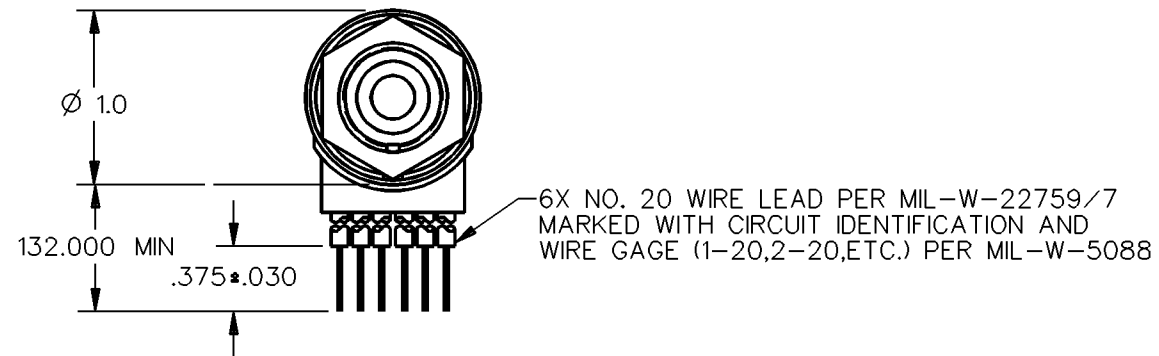
94

MAR

15

5 A /

DDM/CAD



CIRCUIT DIAGRAM

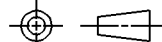
NOTES

- 1 - CORROSION RESISTANT STEEL ENCLOSURE
2 - SWITCH SEALED PER MIL-S-8805 SYMBOL 4
3 - CIRCUIT DIAGRAM AND CATALOG LISTING ARE SHOWN
ON NAMEPLATE
4 - COINCIDENCE OF OPERATING AND RELEASING POINTS:
A .010 OF PLUNGER TRAVEL

5 .010 OF PLUNGER TRAVEL
HARDWARE MAY BE PACKAGED UNASSEMBLED PER MIL-S-8805

THIS DRAWING COVERS A PROPRIETARY ITEM AND IS THE PROPERTY OF MICRO SWITCH, A DIVISION OF HONEYWELL. THIS DRAWING IS NOT TO BE COPIED OR USED WITHOUT THE APPROVAL OF MICRO SWITCH

THIRD ANGLE PROJECTION



| | |
|-------|------|
| SCALE | FULL |
|-------|------|

DO NOT SCALE PRINT

CHARACTERISTICS

| | | |
|-----------------------|-----------|-----------|
| OPERATING FORCE | — — — — | 6-12 LB |
| FULL OVERTRAVEL FORCE | --- | 30 LB MAX |
| RELEASE FORCE | — — — — — | 4 LB MIN |
| PRETRAVEL | — — — — — | .040 MAX |
| DIFFERENTIAL TRAVEL | — — — | .020 MAX |
| OVERTRAVEL | — — — — — | .250 MIN |

ELECTRICAL DATA

CONTACT ARRANGEMENT
2X S P D T

| LOAD | 28 VDC | |
|-------|-----------|------------|
| | SEA LEVEL | 50,000 FT. |
| RES | 4 | 4 |
| IND | 2 | 2 |
| MOTOR | 4 | |
| LAMP | | |

| | | |
|--------------------|--------|---|
| TOLERANCES ARE | | |
| ONE PLACE | (.0) | ± |
| TWO PLACE | (.00) | ± |
| THREE PLACE | (.000) | ± |
| ANGLES | | ± |
| WEIGHT 10.0 OZ MAX | | |

ANSI Y14.5M-1982 APPLIES

Mouser Electronics

Authorized Distributor

Click to View Pricing, Inventory, Delivery & Lifecycle Information:

[Honeywell:](#)

[1EN1-11](#)