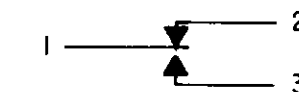


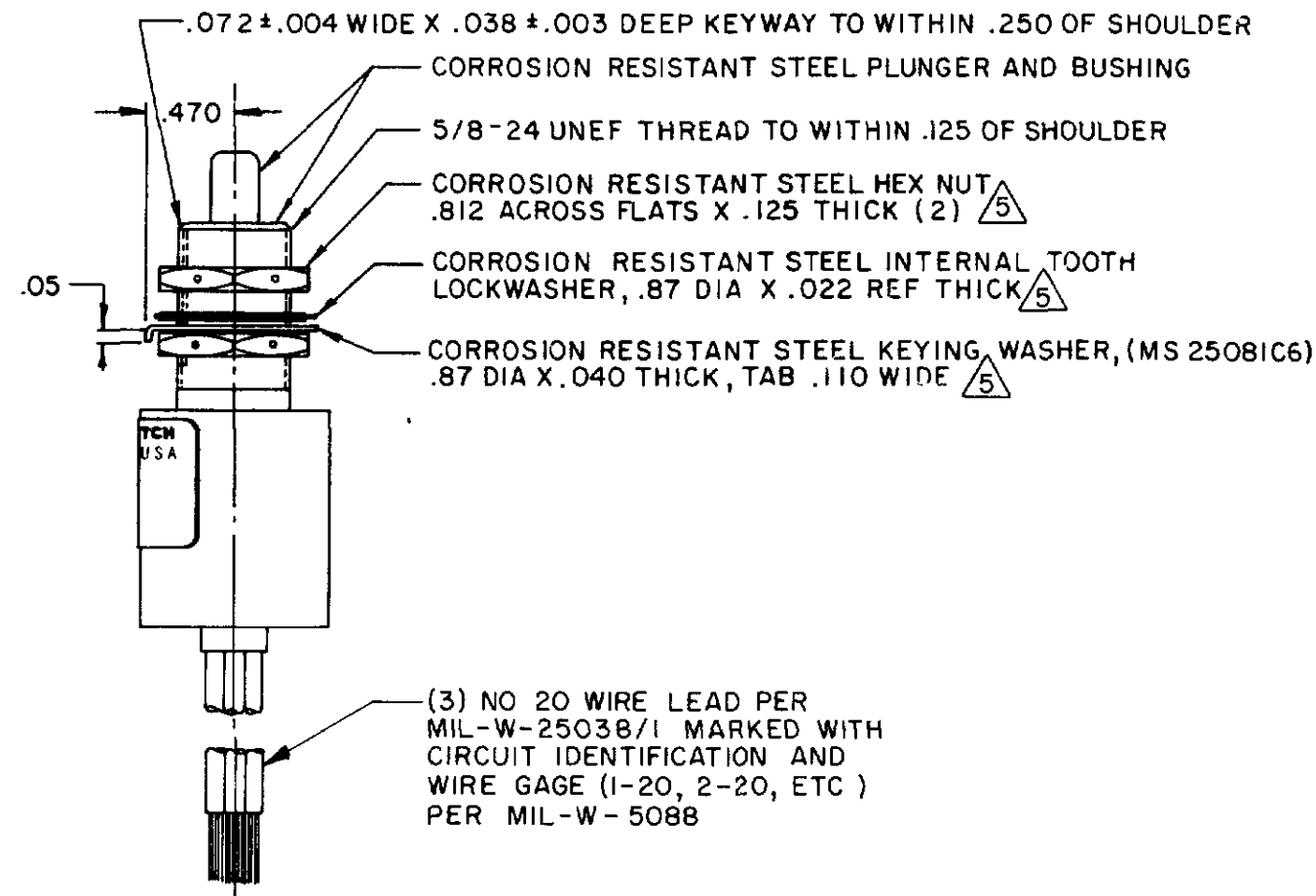
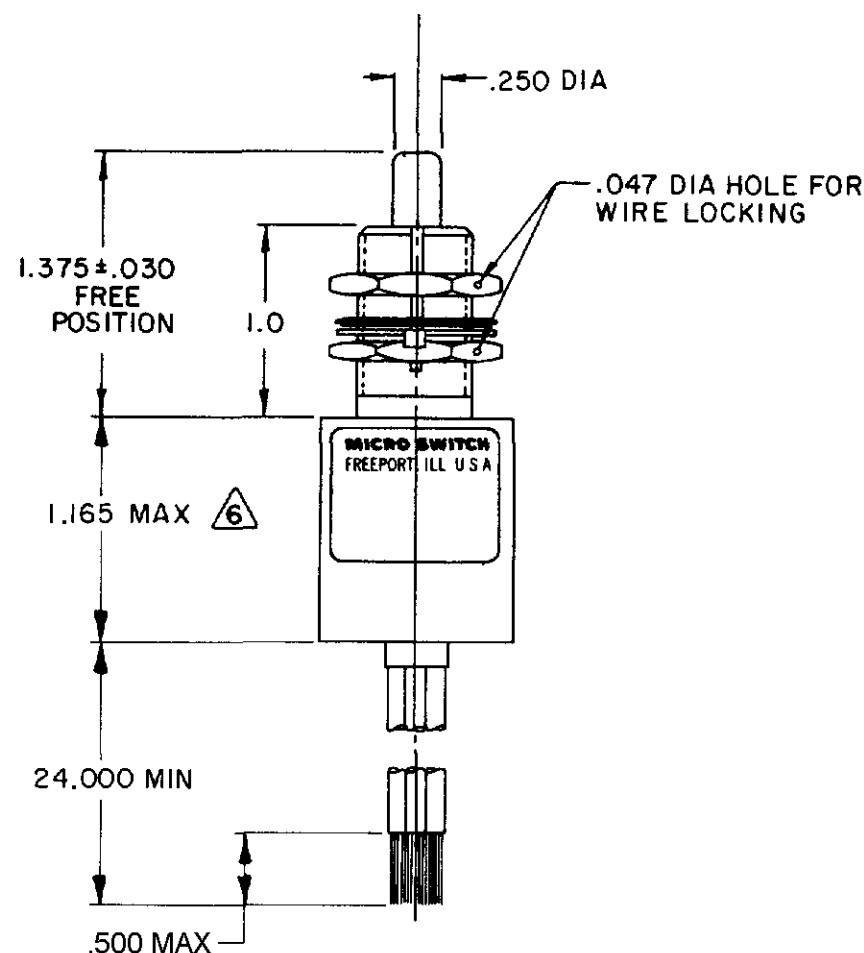
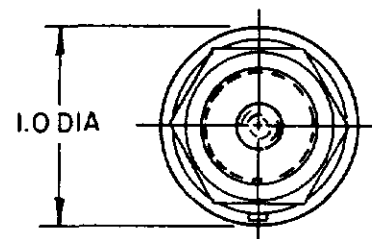
MICRO SWITCH
FREEPORT ILLINOIS U.S.A.
A DIVISION OF HONEYWELL
FED MFG CODE 91929

SWITCH - ENCLOSED

CATALOG LISTING
1EN564-2B



CIRCUIT DIAGRAM



NOTES

- 1 - CORROSION RESISTANT STEEL ENCLOSURE
- 2 - SWITCH SEALED PER MIL-PRF-8805 SYMBOL 4
- 3 - CIRCUIT DIAGRAM AND CATALOG LISTING ARE SHOWN ON NAMEPLATE
- 4 - COINCIDENCE OF OPERATING AND RELEASING POINTS: .010 OF PLUNGER TRAVEL
- 5 - HARDWARE MAY BE PACKAGED UNASSEMBLED PER MIL-PRF-8805
- 6 - THIS DIMENSION EXCLUDES THE RESILIENT POTTING MATERIAL ON THE BOTTOM OF SWITCH

1EN564-2B

M

DRAWING NUMBER

ISSUE

6

REVISIONS

A	PR-14606	CJH	MAR 86
B	CO66712	TJO	DEC 89
C	CO74101	LJP	FEB 93
D	77001	SAB	MAY 94
E	203868	TSM	SEP 01

RASTOR
FO-9285 1-B
DRAWN

REPLACES

RELEASE NO. PR-14606

CHECK

CHECK

CHECK

CHECK

CHECK

CHECK

CHECK

CHECK

CHECK

CHECK

THIS DRAWING COVERS A PROPRIETARY ITEM AND IS THE PROPERTY OF MICRO SWITCH A DIVISION OF HONEYWELL THIS DRAWING IS NOT TO BE COPIED OR USED WITHOUT THE APPROVAL OF MICRO SWITCH

CHARACTERISTICS	
OPERATING FORCE	3-6 LB
FULL OVERLOAD FORCE	17 LB MAX
RELEASE FORCE	2 LB MIN
PRETRAVEL	.040 MAX
DIFFERENTIAL TRAVEL	.020 MAX
OVERTRAVEL	.250 MIN

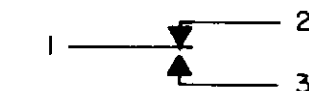
ELECTRICAL DATA		
CONTACT ARRANGEMENT		
S P D T		
28 VDC		
LOAD	SEA LEVEL	50,000 FT.
RES	4	4
IND	2	2
MOTOR	4	

SCALE FULL	
DO NOT SCALE PRINT	
TOLERANCES	
APPLY TO DESIGN UNITS CONVERSIONS ARE ONLY FOR REFERENCE UNLESS NOTED TOLERANCES ARE:	
NO PLACES	DM IN
ONE PLACE	DM IN
TWO PLACES	DM IN
THREE PLACES	DM IN
ANGLES	DM IN
DESIGN UNITS	US CUSTOMARY
THIRD ANGLE PROJECTION	
WEIGHT 7.5 OZ MAX	

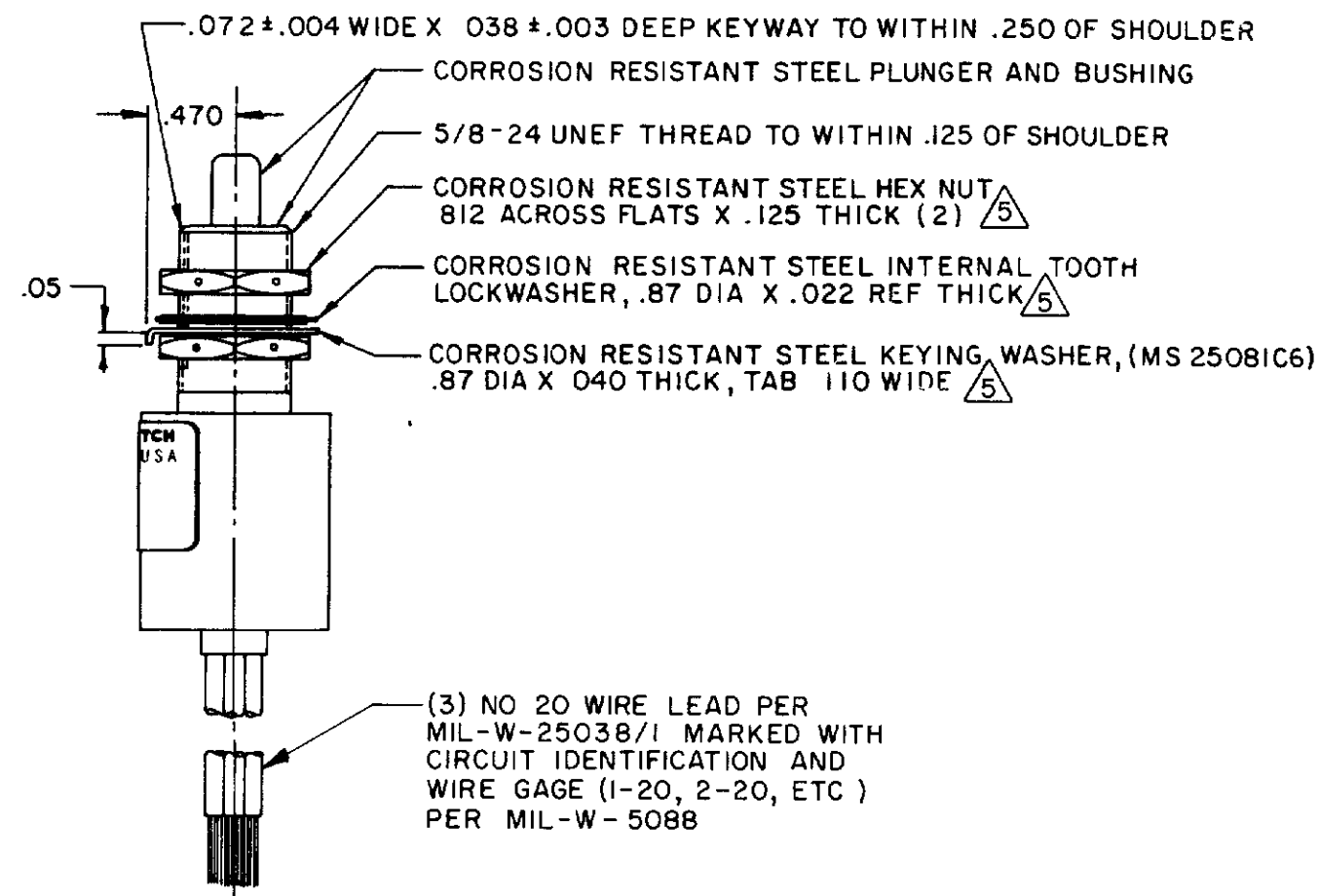
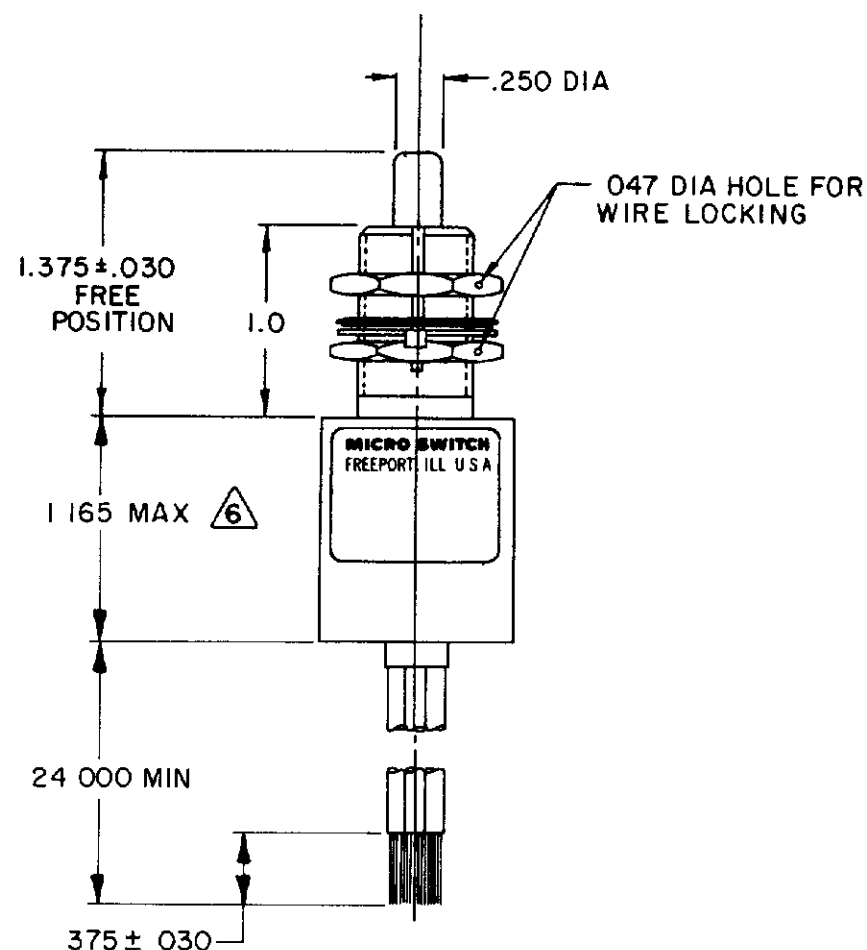
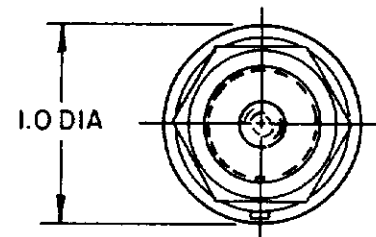
MICRO SWITCH
FREEPORT ILLINOIS U.S.A.
A DIVISION OF HONEYWELL
FED MFG CODE 91929

SWITCH - ENCLOSED

CATALOG LISTING
1EN564-2B



CIRCUIT DIAGRAM



FO-5285 1-B		DRAWN		CJH 14 MAR 86		CHECK	KAG	15 MAR 86	CHECK	DRAWN		ISSUE		X	X	DRAWING NUMBER		M	1EN564-2B			
REVISIONS										CHECK					RELEASE NO. PR-14606		REPLACES					
A	PR-14606			CJH		MAR 86																
B	CO66712			TJO		DEC 89																
C	CO74101			LJF		FEB 93																
D	770048			SAD		18 MAY 94																
										CHECK												
										CHECK												
										CHECK												
										CHECK												
										CHECK												
										CHECK												
										CHECK												
										CHECK												
										CHECK												
										CHECK												
										CHECK												
										CHECK												
										CHECK												
										CHECK												
										CHECK												
										CHECK												
										CHECK												
										CHECK												
										CHECK												
										CHECK												
										CHECK												
										CHECK												
										CHECK												
										CHECK												
										CHECK												
										CHECK												
										CHECK												
										CHECK												
										CHECK												
										CHECK												
										CHECK												
										CHECK												
										CHECK												
										CHECK												
										CHECK												
										CHECK												
										CHECK												
										CHECK												
										CHECK												
										CHECK												
										CHECK												
										CHECK												
										CHECK												
										CHECK												
										CHECK												
										CHECK												
										CHECK												
										CHECK												
										CHECK												
										CHECK												
										CHECK												
										CHECK												
										CHECK												
										CHECK												
										CHECK												
										CHECK												
										CHECK												
										CHECK												
										CHECK												
										CHECK												
										CHECK												
										CHECK												
										CHECK												
										CHECK												
										CHECK												
										CHECK												
										CHECK												
										CHECK												
										CHECK												
										CHECK												
										CHECK												
										CHECK												
										CHECK												

THIS DRAWING COVERS A PROPRIETARY ITEM AND IS THE PROPERTY OF MICRO SWITCH A DIVISION OF HONEYWELL THIS DRAWING IS NOT TO BE COPIED OR USED WITHOUT THE APPROVAL OF MICRO SWITCH

CHARACTERISTICS	
OPERATING FORCE	3-6 LB
FULL OVERLOAD FORCE	17 LB MAX
RELEASE FORCE	2 LB MIN
PRETRAVEL	.040 MAX
DIFFERENTIAL TRAVEL	.020 MAX
OVERTRAVEL	.250 MIN

ELECTRICAL DATA		
CONTACT ARRANGEMENT		
S P D T		
28 VDC		
LOAD	SEA LEVEL	50,000 FT.
RES	4	4
IND	2	2
MOTOR	4	

SCALE				FULL			
DO NOT SCALE PRINT							
TOLERANCES							
APPLY TO DESIGN UNITS CONVERSIONS ARE ONLY FOR REFERENCE UNLESS NOTED TOLERANCES ARE:							
NO PLACES		DIM	TOL	DIM		TOL	
ONE PLACE		IN	1/64	IN		0.0005	
TWO PLACES		IN	0.0005	IN		0.0005	
THREE PLACES		IN	0.00005	IN		0.00005	
ANGLES							
DESIGN UNITS				US CUSTOMARY			
THIRD ANGLE PROJECTION							
WEIGHT				7.5 OZ MAX			

NOTES

- 1 - CORROSION RESISTANT STEEL ENCLOSURE
- 2 - SWITCH SEALED PER MIL-S-8805 SYMBOL 4
- 3 - CIRCUIT DIAGRAM AND CATALOG LISTING ARE SHOWN ON NAMEPLATE
- 4 - COINCIDENCE OF OPERATING AND RELEASING POINTS: .010 OF PLUNGER TRAVEL
- 5 - HARDWARE MAY BE PACKAGED UNASSEMBLED PER MIL-S-8805
- 6 - THIS DIMENSION EXCLUDES THE RESILIENT POTTING MATERIAL ON THE BOTTOM OF SWITCH

Mouser Electronics

Authorized Distributor

Click to View Pricing, Inventory, Delivery & Lifecycle Information:

[Honeywell:](#)

[1EN564-2B](#)