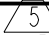
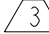
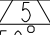
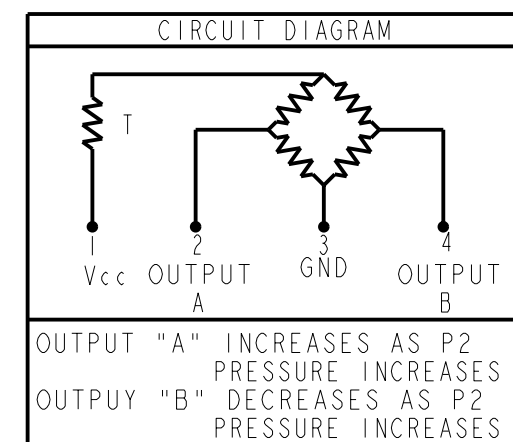


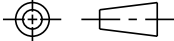
THIS DRAWING COVERS A PROPRIETARY ITEM AND IS THE PROPERTY OF MICRO SWITCH, A DIVISION OF HONEYWELL. THIS DRAWING IS NOT TO BE COPIED OR USED WITHOUT THE APPROVAL OF MICRO SWITCH

GENERAL OPERATING CHARACTERISTICS

(ELECTRICAL PERFORMANCE AT 10.0 ± 0.01 VDC EXCITATION, 25°C)

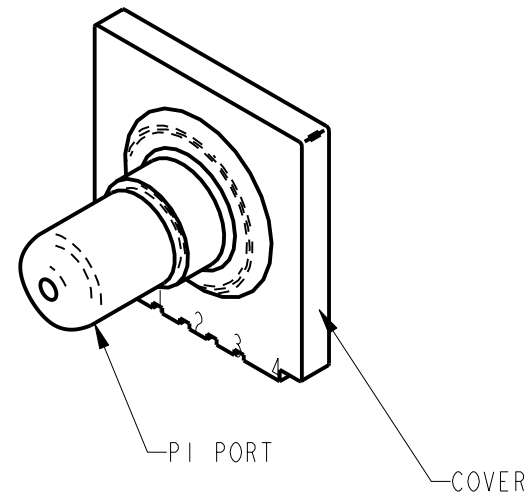
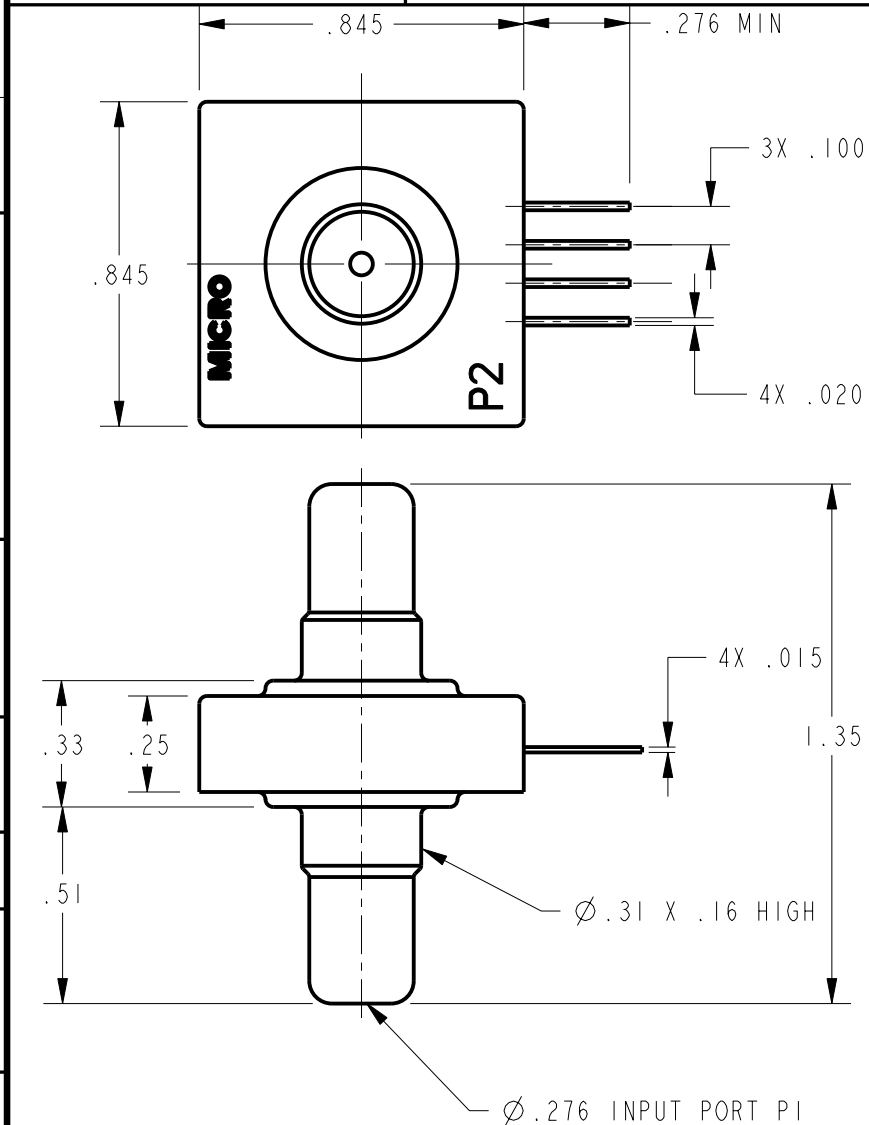
PARAMETERS	PRESSURE RANGES (H ₂ O)	MIN	TYP	MAX	UNITS
NULL OFFSET	ALL	-2	0	+2	MV
NULL SHIFT  0° ← 25° C → 50°		-1.2		+1.2	
P ₂ > P ₁ F.S.O.  (FULL SCALE OUTPUT)	0 TO 07 D & G	26	28	30	
P ₂ > P ₁ SENSITIVITY PER IN. H ₂ O	0 TO 07 D		1.5		
F.S.O. SHIFT  0° ← 25° C → 50°	ALL				%F.S.O.
AT 10 VDC				± 3.5	
AT 2mA			NONE		
P ₂ > P ₁	0 TO 07 D			± 3.0	
P ₁ > P ₂	0 TO 07 D			± 1.5	
LINEARITY (BFSL)					VDC
REPEATABILITY & HYSTERESIS	ALL		±0.25		
STABILITY OVER 1 YEAR			±1.5		
EXCITATION VOLTAGE			10	16	
INPUT RESISTANCE			6.3K		OHMS
(P ₂ > P ₁) (P ₁ > P ₂) OVERPRESSURE	0 TO 07			140	IN. H ₂ O
TEMPERATURE STORAGE OPERATE COMPENSATED	ALL				



THIRD ANGLE PROJECTION		
		
SCALE	2 : 1	
DO NOT SCALE PRINT		
UNLESS OTHERWISE SPECIFIED TOLERANCES ARE		
ONE PLACE	(.0)	±.030
TWO PLACE	(.00)	±.015
THREE PLACE	(.000)	±.005
ANGLES		±
WEIGHT	2.02	

NOTES

- 1 - TERMINALS ARE PLATED FOR SOLDERING
- 2 - LIMIT SOLDERING TO 315°C MAX FOR 10 SECONDS MAX
- 3 F.S.O. IS THE ALGEBRAIC DIFFERENCE BETWEEN END POINTS (OUTPUT AND MINIMUM AND MAXIMUM PRESSURE)
- 4 - INPUT MEDIA: P1 - DRY GASES ONLY: CONNECTION SIDE OF SENSOR
P2 - LIMITED ONLY TO THOSE MEDIA THAT WILL NOT ATTACK
POLYESTER, SILICON OR SILICONE BASED ADHESIVE
- 5 TEMPERATURE ERROR IS CALCULATED WITH RESPECT TO 25°C AND EXPRESSES THE DEVIATION THAT COULD OCCUR AS TEMPERATURE IS RAISED OR LOWERED TO LIMITS INDICATED



ANSI Y14.5M-1982 APPLIES

Mouser Electronics

Authorized Distributor

Click to View Pricing, Inventory, Delivery & Lifecycle Information:

[Honeywell:](#)

[176PC07HD33](#)