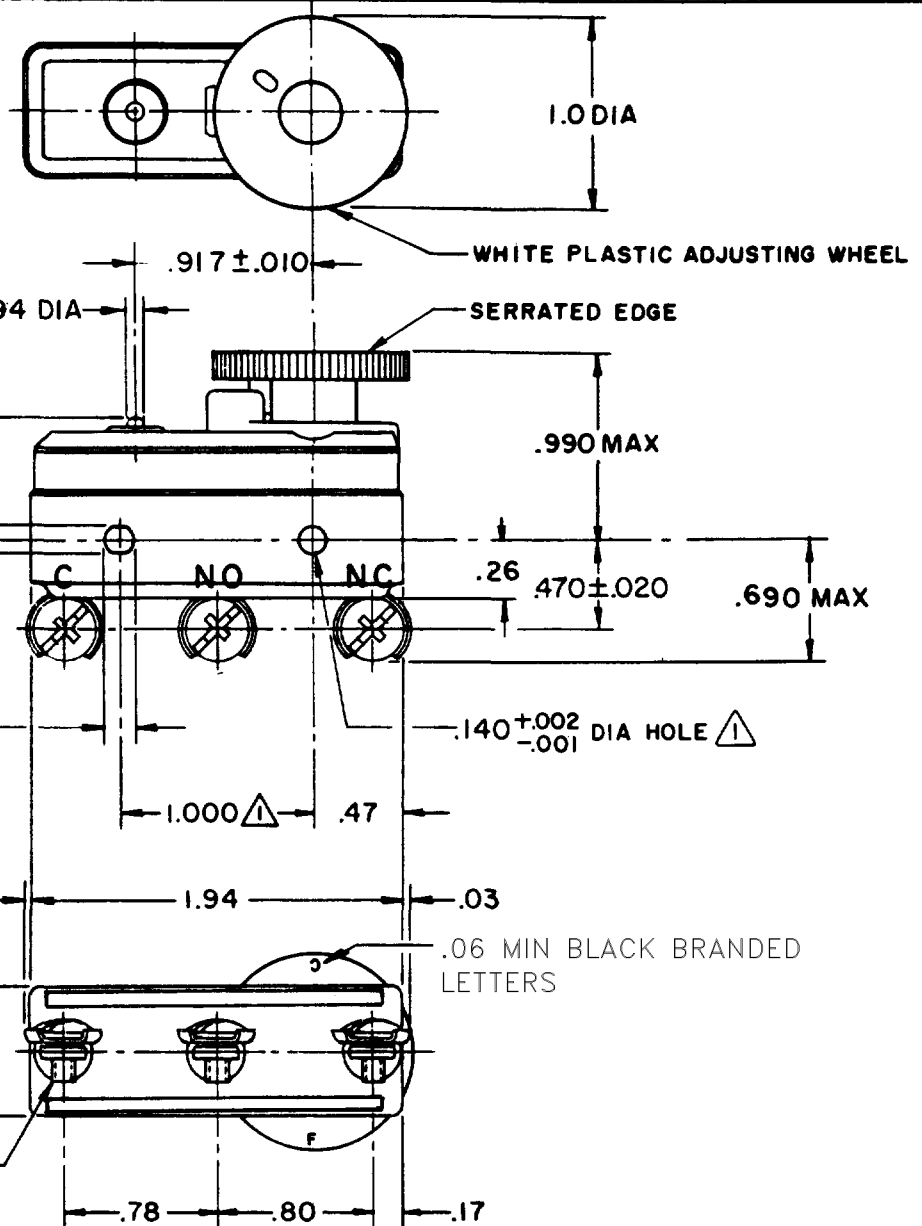


MICRO SWITCHFREEPORT ILLINOIS, U.S.A
A DIVISION OF HONEYWELL

FED. MFG. CODE 91929

SWITCH-BASIC

CATALOG LISTING

12BS211

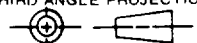
3X 8-32 UNC (.219) BINDING
HEAD COMBINATION TERMINAL
SCREW AND CUPWASHER

NOTES -

- 1 MOUNTING HOLES WILL ACCEPT PINS OR SCREWS OF $.139 \text{ MAX DIA}$ ON $1.000 \pm .002$ CENTERS
- 2 DIAL WHEEL IS SHOWN AT THE MAX SETTING OF BREAK DISTANCE
- 3- DIAL WHEEL ROTATION 300°

THIS DRAWING COVERS A PROPRIETARY ITEM AND IS THE PROPERTY OF MICRO SWITCH, A DIVISION OF HONEYWELL. THIS DRAWING IS NOT TO BE COPIED OR USED WITHOUT THE APPROVAL OF MICRO SWITCH.

THIRD ANGLE PROJECTION

**CHARACTERISTICS**

AT MIN SETTING
OPERATING FORCE ——— 6-10 OZ
RELEASE FORCE ——— 4 OZ MIN
DIFFERENTIAL TRAVEL ——— .0003 MAX
OVERTRAVEL ——— .005 MIN

ELECTRICAL DATA

CONTACT ARRANGEMENT
S P D T

L111
15A 125, 250 OR 277 VAC
1/8 HP 125 VAC, 1/4 HP 250 VAC



SCALE FULL

DO NOT SCALE PRINT

TOLERANCES
APPLY TO DESIGN UNITS. CONVERSIONS ARE ONLY FOR
REFERENCE. UNLESS NOTED, TOLERANCES ARE \pm

DIM.	TOL.	DIM.	TOL.
mm	mm/in	in	mm/in
NO PLACES	X	1/.04	
ONE PLACE	X,X	0.4/.016	X,X 0.8/.03
TWO PLACES	X,XX	0.16/.006	X,XX 0.38/.016
THREE PLACES	X,XXX		X,XXX 0.13/.006

DESIGN UNITS ☐ SI METRIC ☒ US CUSTOMARY

WEIGHT

12BS211**M**DRAWING
NUMBER

6

ISSUE

REVISIONS

A C080053
JALA
5 APR 95

REPLACES X63270-BS

RELEASE NO. PR-5001

CHECK

CHECK

CHECK

CHECK

CHECK

FORMTEK

DRAWN

D B W 15 MAY 75 CHECK D J W 16 MAY 75

Mouser Electronics

Authorized Distributor

Click to View Pricing, Inventory, Delivery & Lifecycle Information:

[Honeywell:](#)

[12BS211](#)