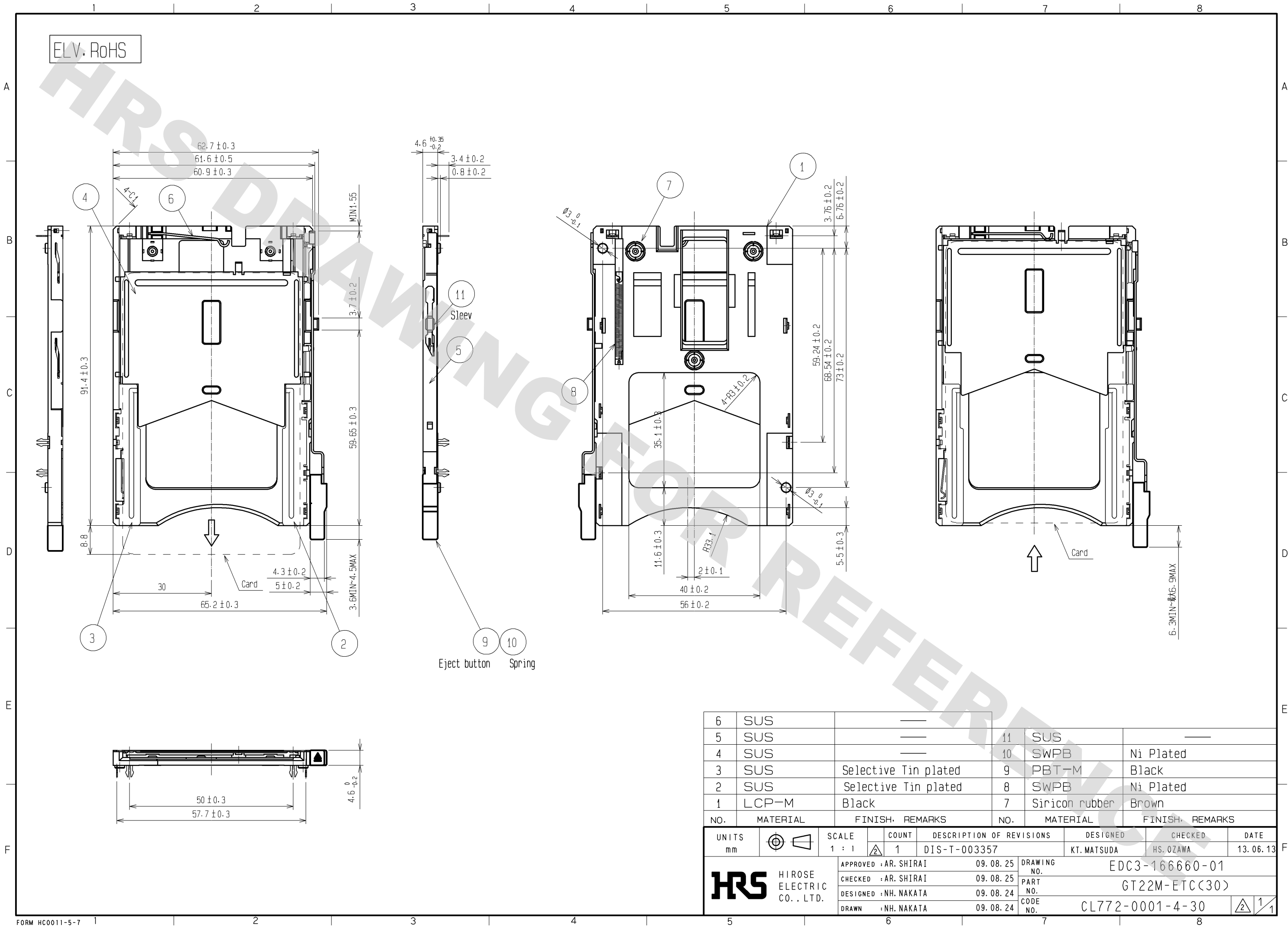
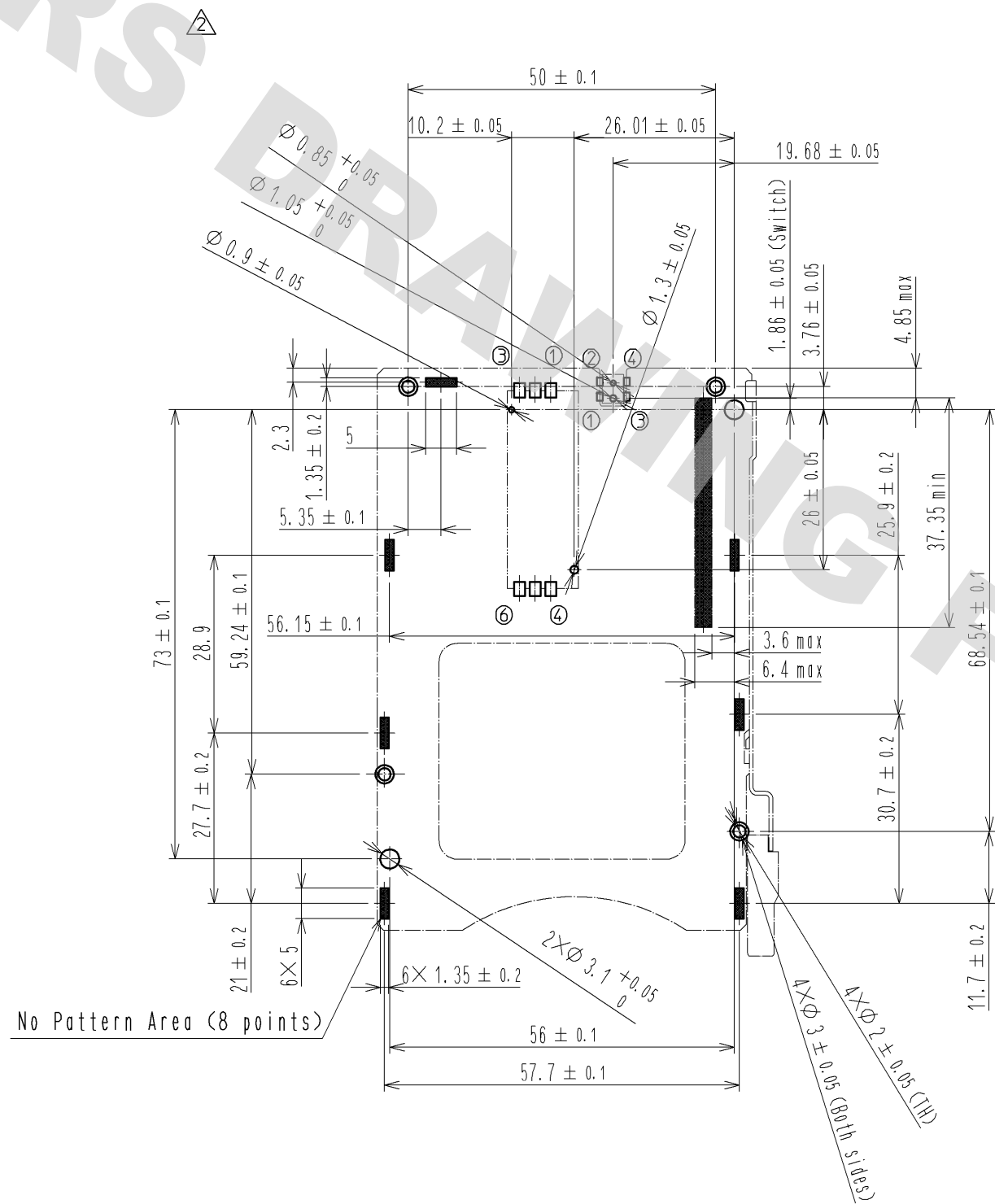


DRAWING FOR REFERENCE: This is subject to change without notice
12/05/2013



6	SUS				
5	SUS		11	SUS	
4	SUS		10	SWPB	Ni Plated
3	SUS	Selective Tin plated	9	PBT-M	Black
2	SUS	Selective Tin plated	8	SWPB	Ni Plated
1	LCP-M	Black	7	Siricon rubber	Brown
NO.	MATERIAL	FINISH, REMARKS	NO.	MATERIAL	FINISH, REMARKS
UNITS mm		SCALE 1 : 1	COUNT 1	DESCRIPTION OF REVISIONS DIS-T-003357	DESIGNED KT. MATSUDA
HIROSE ELECTRIC CO., LTD.		APPROVED : AR. SHIRAI	09.08.25	DRAWING NO. EDC3-166660-01	DATE 13.06.13
		CHECKED : AR. SHIRAI	09.08.25	PART NO. GT22M-ETC(30)	
		DESIGNED : NH. NAKATA	09.08.24	CODE NO. CL772-0001-4-30	
		DRAWN : NH. NAKATA	09.08.24		

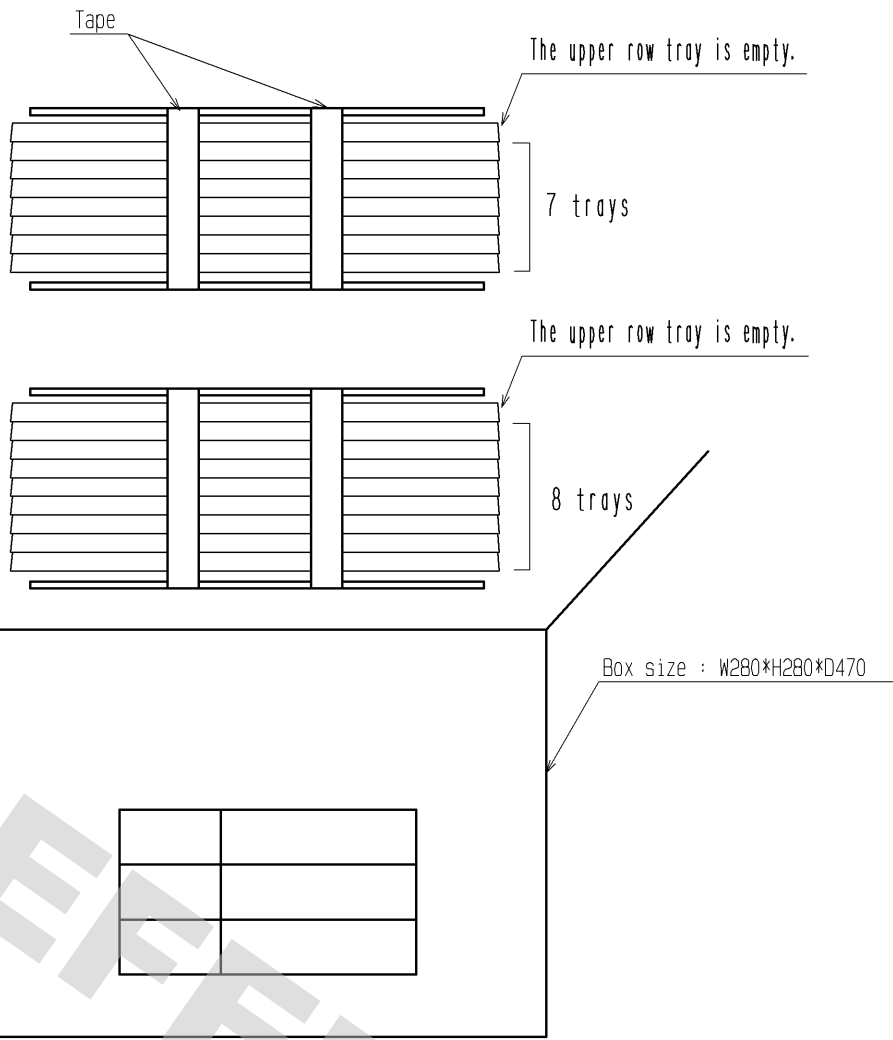
DRAWING FOR REFERENCE: This is subject to change without notice
12/05/2013



Recommended PC Board Pattern

PC Board : $t=1.6 \pm 0.1$

■ : No Pattern Area



Note 1. 12 connectors are contained in one tray.
15 trays are contained in box.
2. ESD Prevention packing.

組立図
ASSEMBLY DRAWING

HRS

DRAWING NO. EDC3-166660-01
PART NO. GT22M-ETC<30>
CODE NO. CL772-0001-4-30

2/1

Mouser Electronics

Authorized Distributor

Click to View Pricing, Inventory, Delivery & Lifecycle Information:

[Hirose Electric:](#)

[GT22M-ETC\(30\)](#)