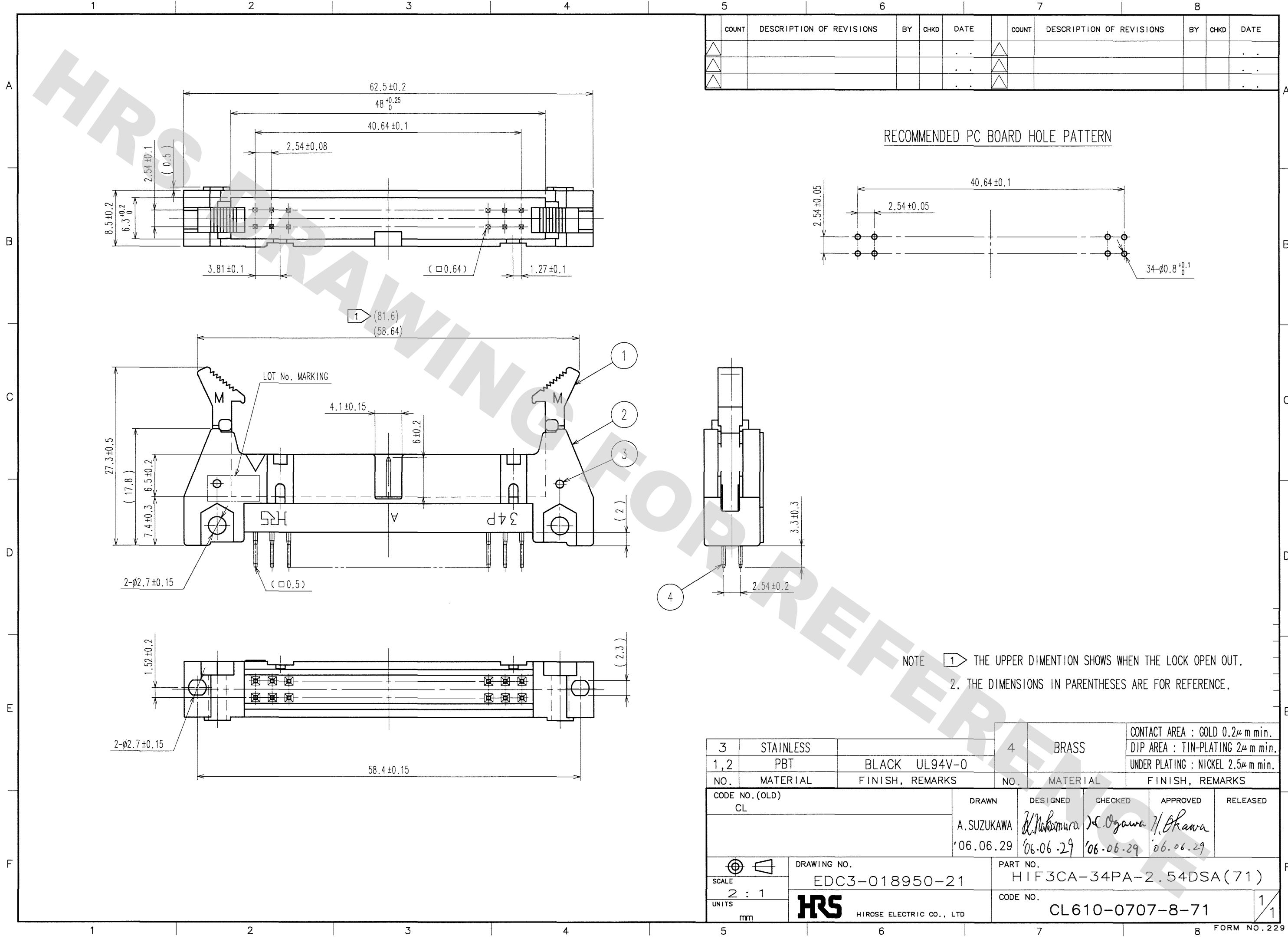


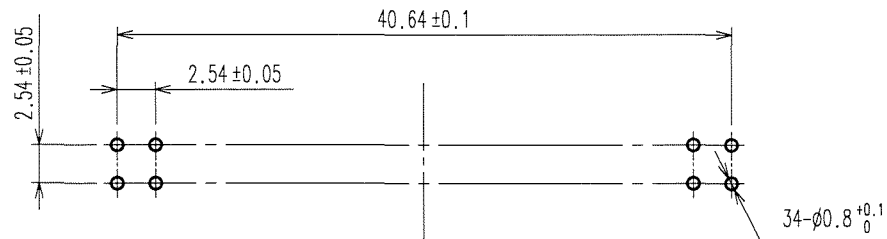
DRAWING FOR REFERENCE: This is subject to change without notice  
08/11/2012

TO



COUNT	DESCRIPTION OF REVISIONS	BY	CHKD	DATE	COUNT	DESCRIPTION OF REVISIONS	BY	CHKD	DATE

RECOMMENDED PC BOARD HOLE PATTERN



NOTE 1 THE UPPER DIMENTION SHOWS WHEN THE LOCK OPEN OUT.  
2. THE DIMENSIONS IN PARENTHESES ARE FOR REFERENCE.

3	STAINLESS	4	BRASS	CONTACT AREA : GOLD 0.2μ m min. DIP AREA : TIN-PLATING 2μ m min. UNDER PLATING : NICKEL 2.5μ m min.	
1,2	PBT	BLACK UL94V-0			
NO.	MATERIAL	FINISH, REMARKS		FINISH, REMARKS	
CODE NO. (OLD) CL		DRAWN A.SUZUKAWA '06.06.29	DESIGNED H.Nakamura '06.06.29	CHECKED H.Ogawa '06.06.29	APPROVED H.Hikawa '06.06.29
SCALE 2 : 1		DRAWING NO. EDC3-018950-21		PART NO. HIF3CA-34PA-2.54DSA(71)	
UNITS mm		HRS HIROSE ELECTRIC CO., LTD		CODE NO. CL610-0707-8-71	
				1/1	

# Mouser Electronics

Authorized Distributor

Click to View Pricing, Inventory, Delivery & Lifecycle Information:

[Hirose Electric:](#)

[HIF3CA-34PA-2.54DSA\(71\)](#)