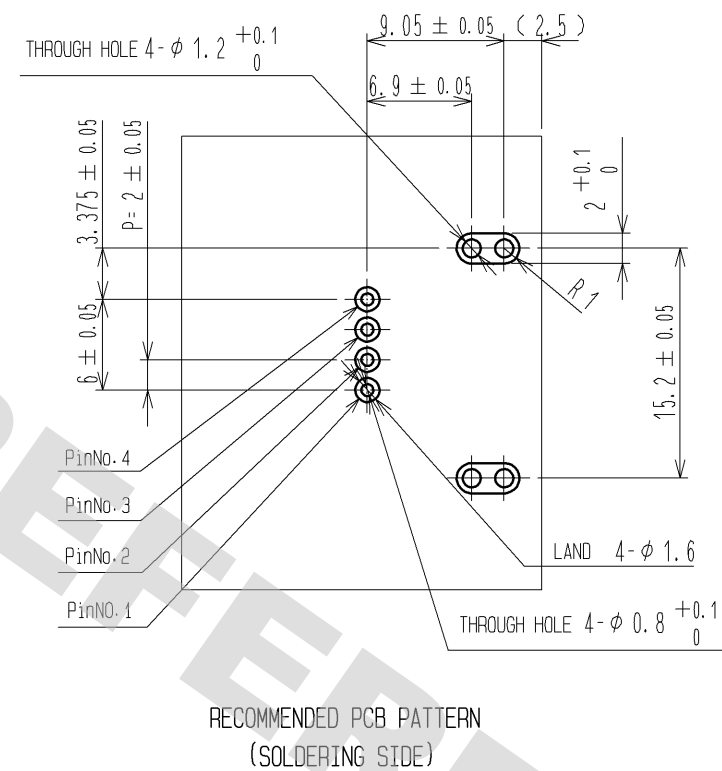
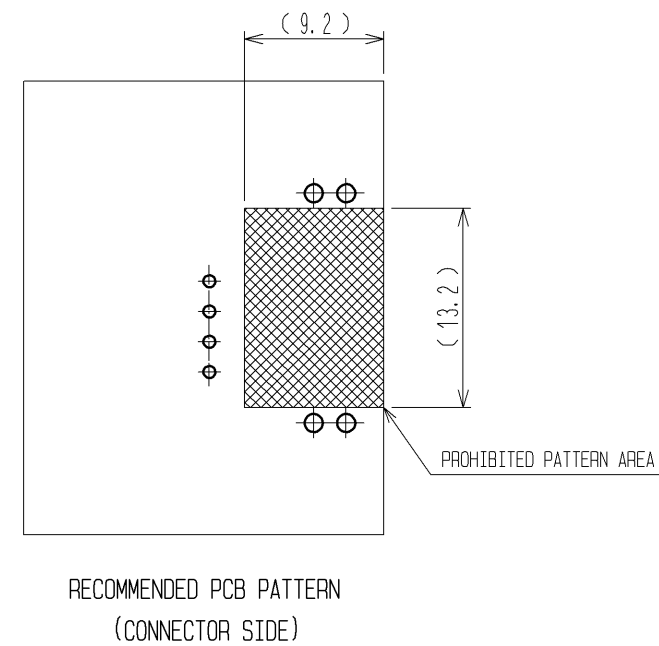
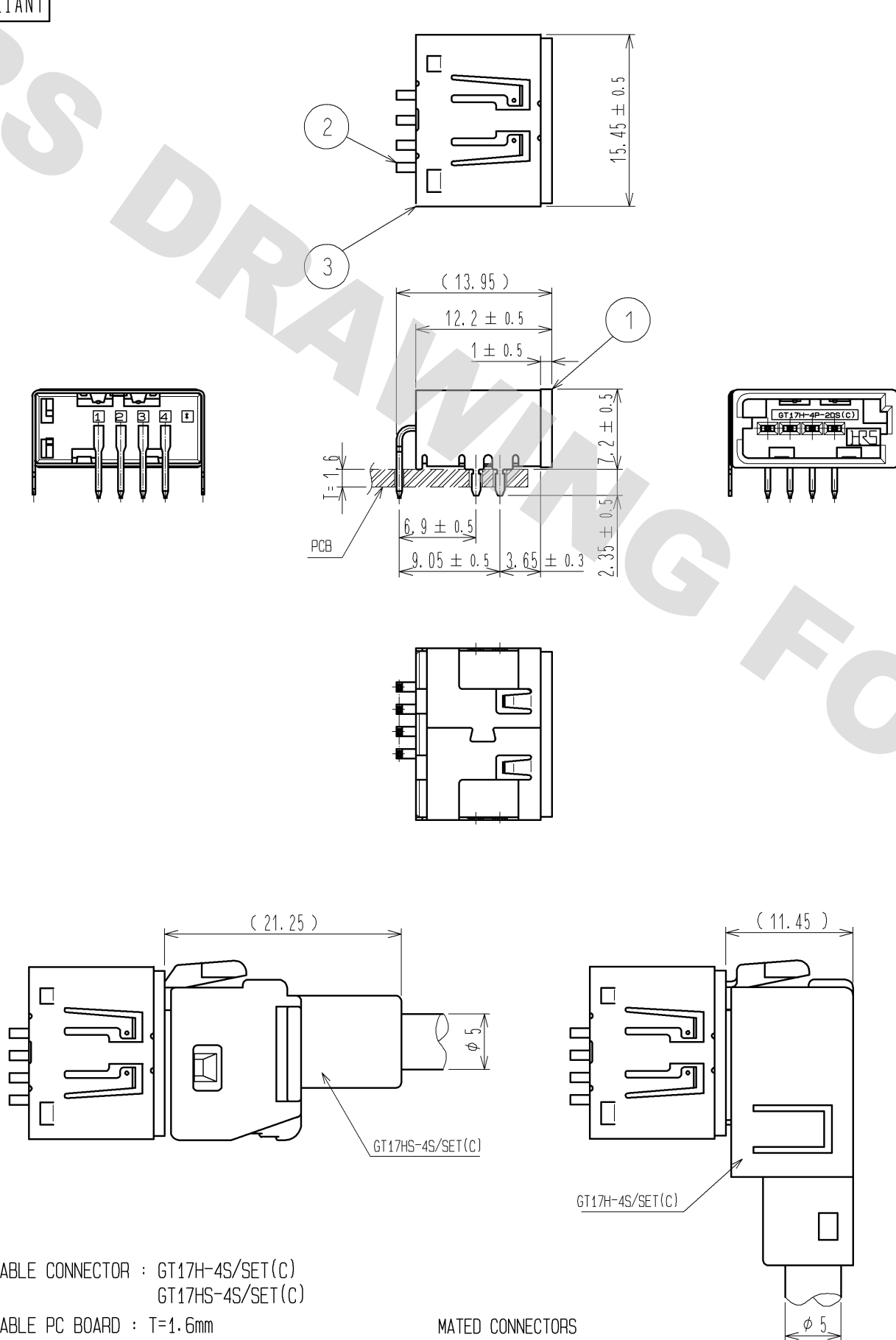


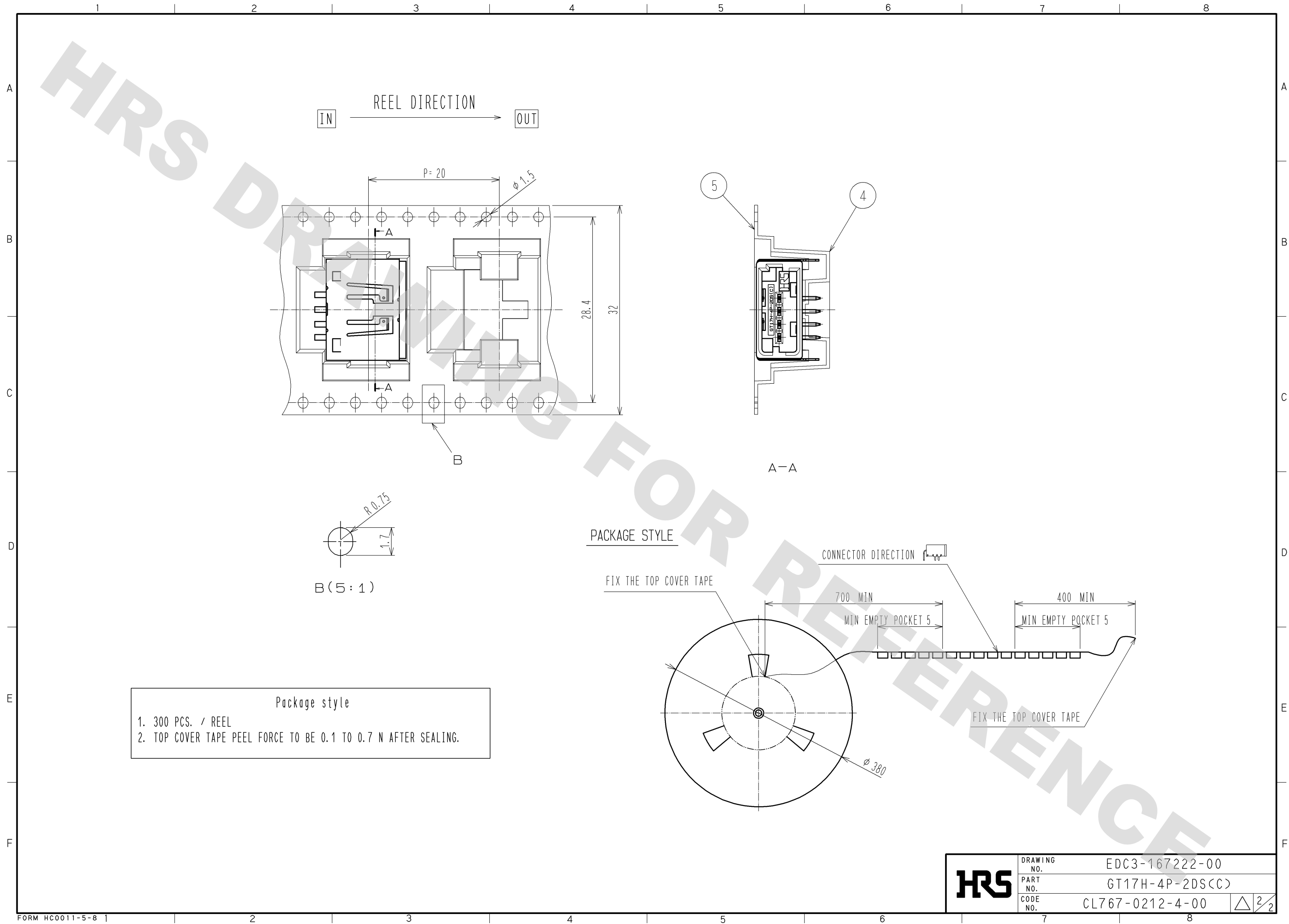
DRAWING FOR REFERENCE: This is subject to change without notice
08/11/2012

ELV, RoHS COMPLIANT



3	COPPER ALLOY	TIN PLATING			
2	BRASS	TIN PLATING	5	PS	
1	PPS	BLUE	4	PS	
NO.	MATERIAL	FINISH . REMARKS	NO.	MATERIAL	FINISH . REMARKS
UNITS mm		SCALE 2 : 1	COUNT 	DESCRIPTION OF REVISIONS	DESIGNED CHECKED DATE
HIROSE ELECTRIC CO., LTD.		APPROVED : AR. SHIRAI	10.12.28	DRAWING NO.	EDC3-167222-00
		CHECKED : AR. SHIRAI	10.12.28	PART NO.	GT17H-4P-2DS(C)
		DESIGNED : NH. NAKATA	10.12.28	CODE NO.	CL767-0212-4-00
		DRAWN : NH. NAKATA	10.12.28		

DRAWING FOR REFERENCE: This is subject to change without notice
08/11/2012



HRS

DRAWING NO.	EDC3-167222-00
PART NO.	GT17H-4P-2DS(C)
CODE NO.	CL767-0212-4-00

2/2

Mouser Electronics

Authorized Distributor

Click to View Pricing, Inventory, Delivery & Lifecycle Information:

[Hirose Electric:](#)

[GT17H-4P-2DS\(C\)](#)