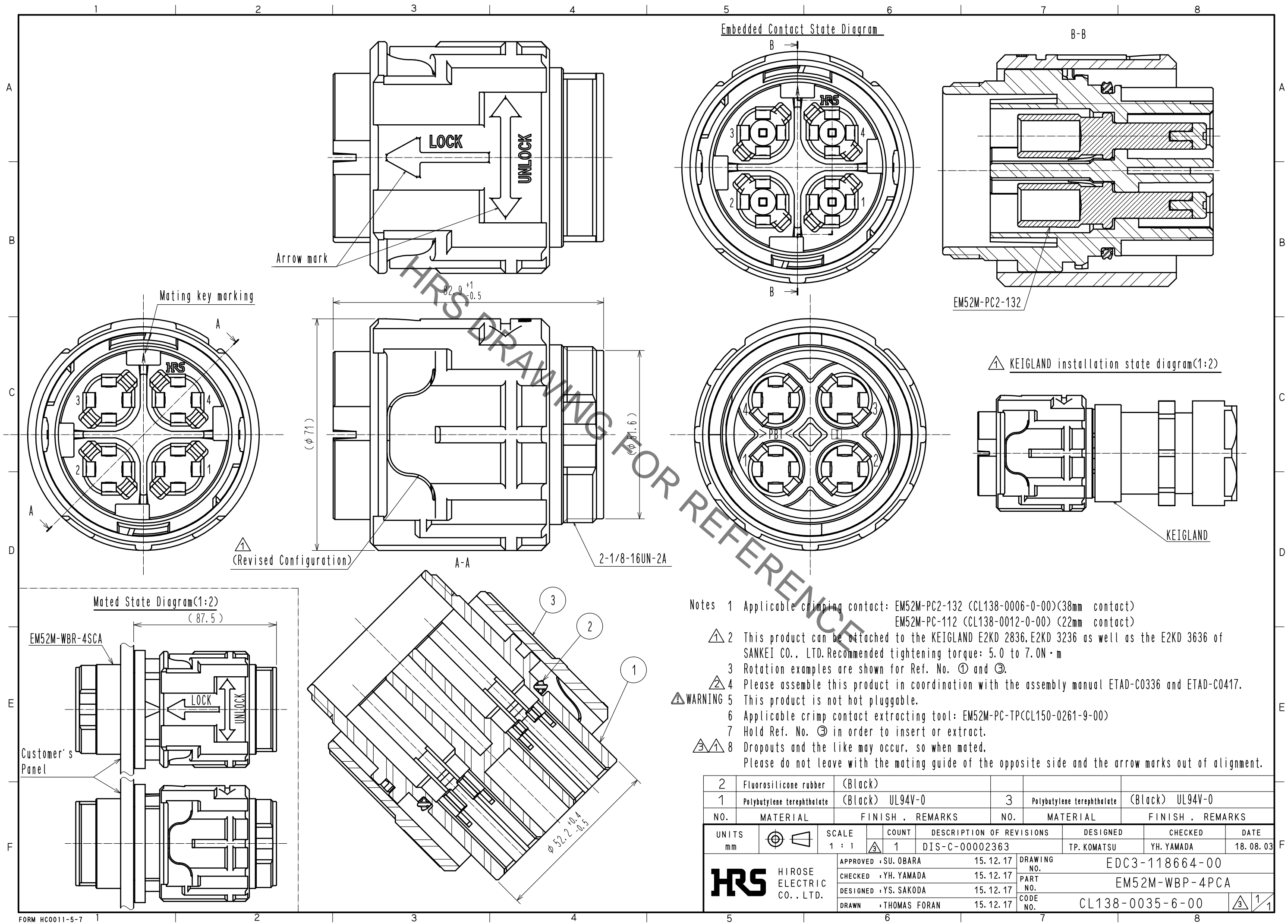


Dec.1.2019 Copyright 2019 HIROSE ELECTRIC CO., LTD. All Rights Reserved.
In case of consideration for using Automotive equipment / device which demand high reliability, kindly contact our sales window correspondents.



- Notes 1 Applicable crimping contact: EM52M-PC2-132 (CL138-0006-0-00) (38mm contact)
EM52M-PC-112 (CL138-0012-0-00) (22mm contact)
- △ 2 This product can be attached to the KEIGLAND E2KD 2836, E2KD 3236 as well as the E2KD 3636 of SANKEI CO., LTD. Recommended tightening torque: 5.0 to 7.0N·m
- 3 Rotation examples are shown for Ref. No. ① and ③.
- △ 4 Please assemble this product in coordination with the assembly manual ETAD-C0336 and ETAD-C0417.
- ⚠ WARNING 5 This product is not hot pluggable.
- 6 Applicable crimp contact extracting tool: EM52M-PC-TP (CL150-0261-9-00)
- 7 Hold Ref. No. ③ in order to insert or extract.
- △ ③ ① 8 Dropouts and the like may occur, so when mated, Please do not leave with the mating guide of the opposite side and the arrow marks out of alignment.

| | | | | | | | |
|-------------|----------------------------|-----------------------|------------|--|-------------------------|-----------------------|--------------------|
| 2 | Fluorosilicone rubber | (Black) | | | | | |
| 1 | Polybutylene terephthalate | (Black) UL94V-0 | 3 | Polybutylene terephthalate | (Black) UL94V-0 | | |
| NO. | MATERIAL | FINISH . REMARKS | NO. | MATERIAL | FINISH . REMARKS | | |
| UNITS mm | | SCALE 1 : 1 | COUNT 1 | DESCRIPTION OF REVISIONS DIS-C-00002363 | DESIGNED TP. KOMATSU | CHECKED YH. YAMADA | DATE 18. 08. 03 |
| | | APPROVED : SU. OBARA | 15. 12. 17 | DRAWING NO. | EDC3-118664-00 | | |
| | | CHECKED : YH. YAMADA | 15. 12. 17 | PART NO. | EM52M-WBP-4PCA | | |
| | | DESIGNED : YS. SAKODA | 15. 12. 17 | CODE NO. | CL138-0035-6-00 | | |
| | | DRAWN : THOMAS FORAN | 15. 12. 17 | | | | |

Mouser Electronics

Authorized Distributor

Click to View Pricing, Inventory, Delivery & Lifecycle Information:

[Hirose Electric:](#)

[EM52M-WBP-4PCA](#)