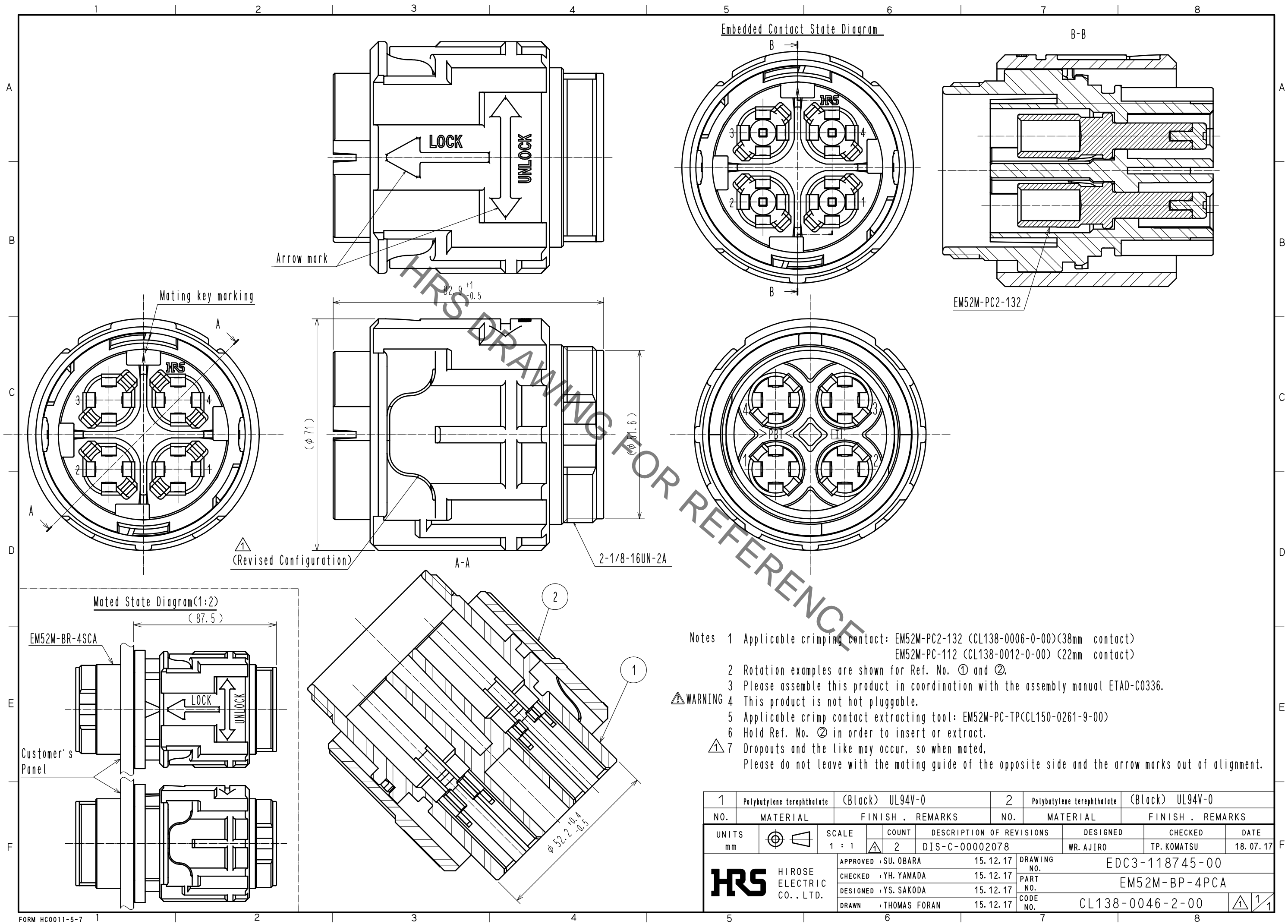


Dec.1.2019 Copyright 2019 HIROSE ELECTRIC CO., LTD. All Rights Reserved.
In case of consideration for using Automotive equipment / device which demand high reliability, kindly contact our sales window correspondents.



Notes 1 Applicable crimping contact: EM52M-PC2-132 (CL138-0006-0-00)(38mm contact)
EM52M-PC-112 (CL138-0012-0-00) (22mm contact)
2 Rotation examples are shown for Ref. No. ① and ②.
3 Please assemble this product in coordination with the assembly manual ETAD-C0336.
⚠ WARNING 4 This product is not hot pluggable.
5 Applicable crimp contact extracting tool: EM52M-PC-TP (CL150-0261-9-00)
6 Hold Ref. No. ② in order to insert or extract.
⚠ 7 Dropouts and the like may occur, so when mated,
Please do not leave with the mating guide of the opposite side and the arrow marks out of alignment.

1	Polybutylene terephthalate	(Black) UL94V-0	2	Polybutylene terephthalate	(Black) UL94V-0
NO.	MATERIAL	FINISH . REMARKS	NO.	MATERIAL	FINISH . REMARKS
UNITS mm		SCALE 1 : 1	COUNT 2	DESCRIPTION OF REVISIONS DIS-C-00002078	DESIGNED WR. AJIRO
				CHECKED TP. KOMATSU	DATE 18. 07. 17
				DRAWING NO. EDC3-118745-00	
HIROSE ELECTRIC CO., LTD.				PART NO. EM52M-BP-4PCA	
APPROVED : SU. OBARA 15. 12. 17				CODE NO. CL138-0046-2-00	
CHECKED : YH. YAMADA 15. 12. 17					
DESIGNED : YS. SAKODA 15. 12. 17					
DRAWN : THOMAS FORAN 15. 12. 17					

Mouser Electronics

Authorized Distributor

Click to View Pricing, Inventory, Delivery & Lifecycle Information:

[Hirose Electric:](#)

[EM52M-BP-4PCA](#)