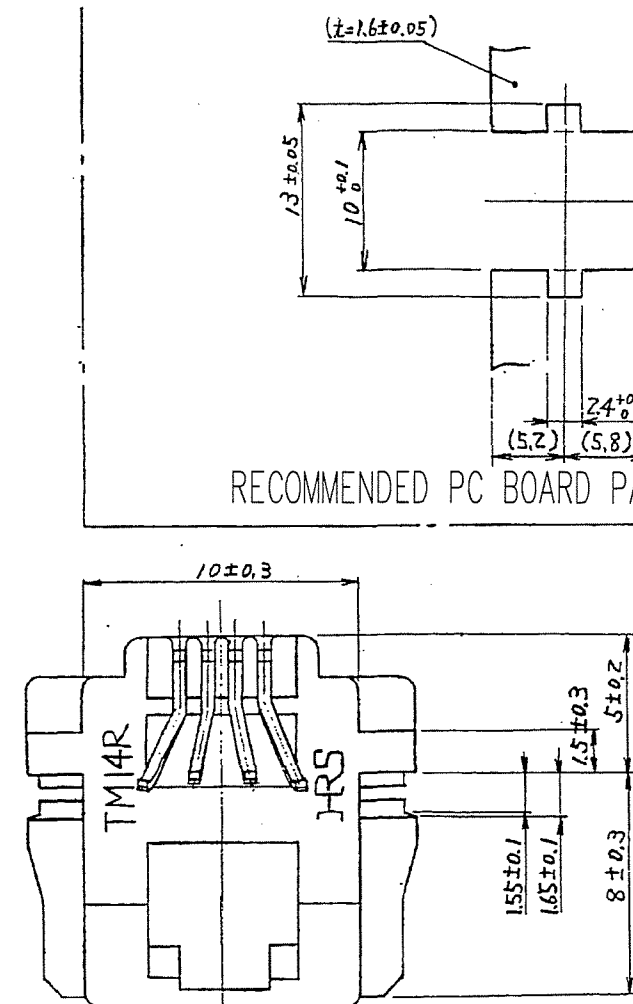
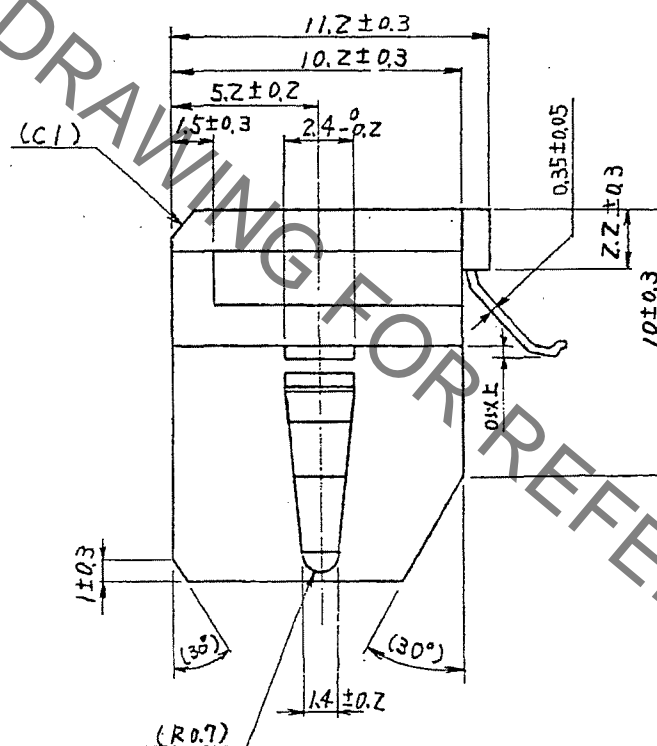
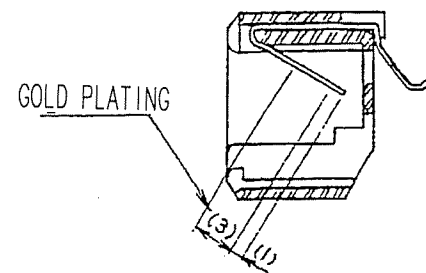
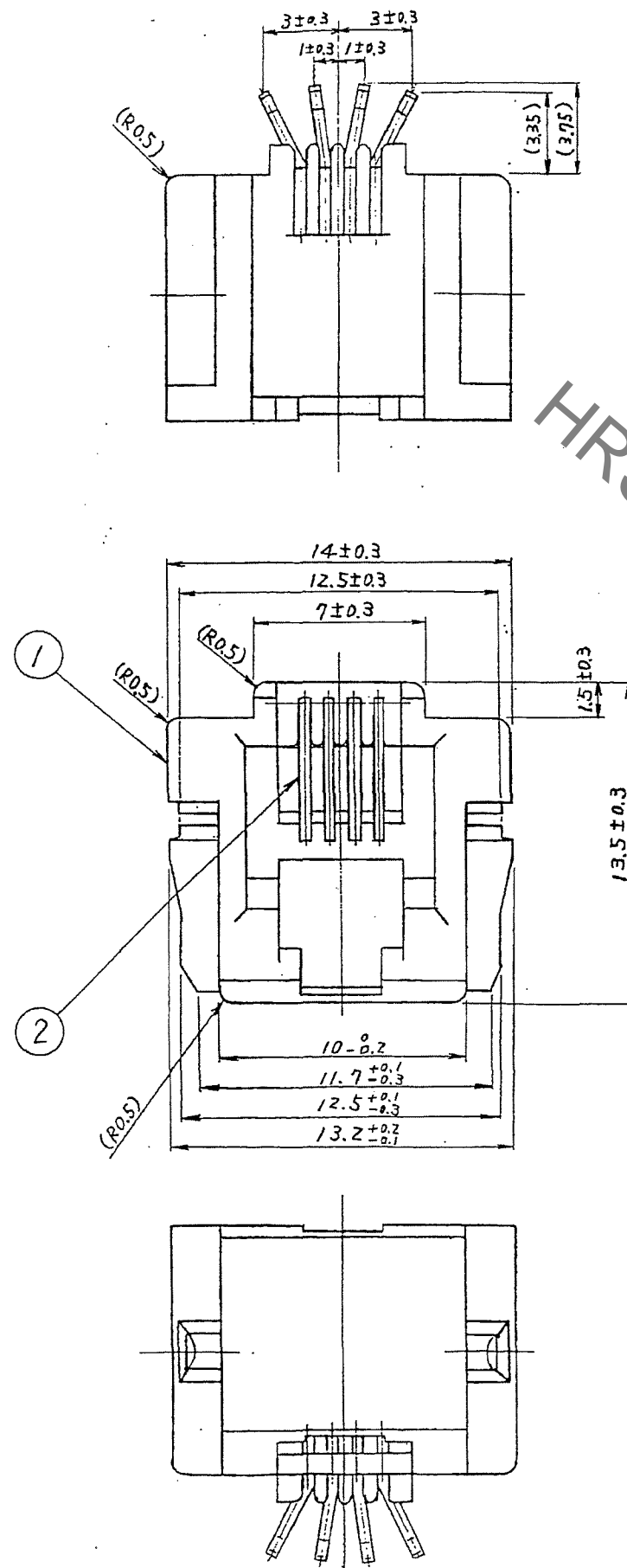


	COUNT	DESCRIPTION OF REVISIONS	BY	CHKD	DATE		COUNT	DESCRIPTION OF REVISIONS	BY	CHKD	DATE
△					. .	△					. .
△					. .	△					. .
△					. .	△					. .



NOTE 1. ABS RESIN IS APPLIED TO THE HOUSING, AND IT'S THERMAL DEFORMATION TEMPERATURE IS APPROX 80°C.
CONTACTS SHALL BE SOLDERED LOCALLY IN ROOM TEMPERATURE AND DO NOT USE SOLDERING METHODS WHICH APPLY HIGH TEMPERATURE TO THE COMPONENT.

2. FOR THE CONNECTOR MOUNTING, BE SURE TO FIX THE BODY TO THE DEVICE SUCH AS ADHESION NOT TO BE LOOSE BY EXTERNAL FORCE.

3. THE DIMENSIONS IN PARENTHESIS ARE FOR REFERENCE.

			2	PHOSPHOR BRONZE	CONTACT: GOLD PLATING 0.5um min LEAR: GOLD PLATING 0.03um min UNDER: NICKEL PLATING 1.27um min		
1	PBT	(BLACK)UL94V-0					
NO.	MATERIAL	FINISH, REMARKS	NO.	MATERIAL	FINISH, REMARKS		
CODE NO. (OLD)			DRAWN	DESIGNED	CHECKED	APPROVED	RELEASED
			M. Itano '07.02.22	M. Itano '07.02.22	Y. Enami '07.02.22	J. M. Muro '07.02.23	.
DRAWING NO.			PART NO.				
EDC3-029831-01			TM14R-E44(50)				
SCALE 2 : 1			CODE NO.				
UNITS mm			CL222-1953-7-50				
HRS HIROSE ELECTRIC CO., LTD			1/1				

Mouser Electronics

Authorized Distributor

Click to View Pricing, Inventory, Delivery & Lifecycle Information:

[Hirose Electric:](#)

[TM14R-E44\(50\)](#)