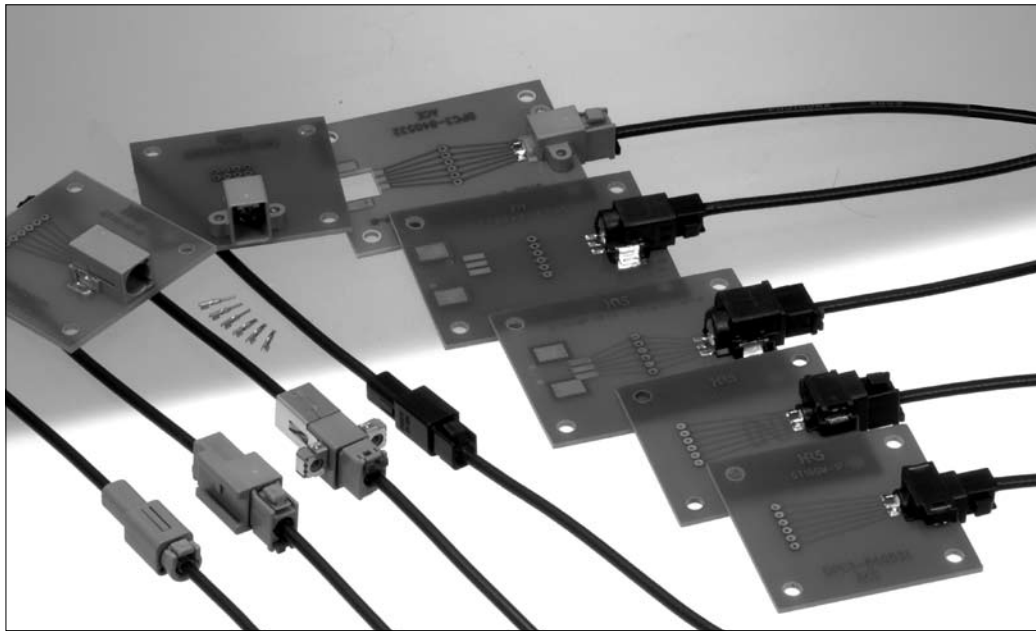


# GT16 Series

## — Subminiature Connectors for coaxial cables —

<Several types and configurations: In-line, board mounted.  
Multi-position and color/ keying variations.>



### Features

- **Space-saving Design**  
Compact and light weight comparing with HRS GT5 series.
- **Excellent High Frequency Performance**  
Refer to V.S.W.R. data on the following pages.

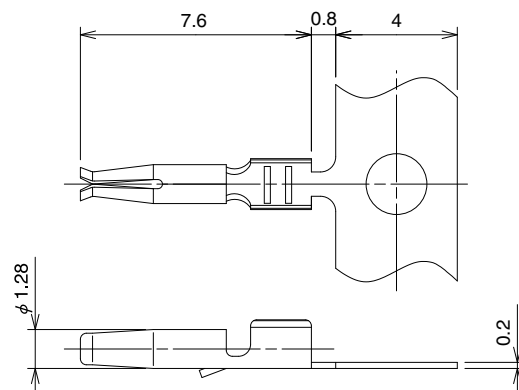
### Applications

In-car communication, car sensors(temperature, pressure), automotive audio systems, GPS antenna systems, RACS antenna audio/video antenna systems, CRT displays, medical and measuring instrumentation LAN systems.

## GT16 Series

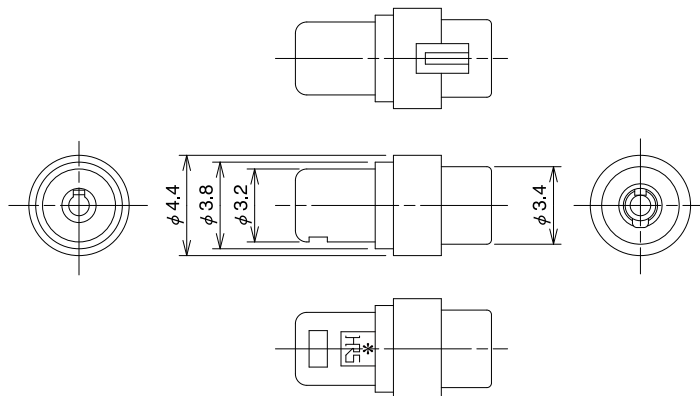
### F Connectors (Common Use)

#### ● Center terminal



Part Number	HRS No.	Conductor Size	Material	Finish	Packaging	RoHS
GT16-2428SCF	766-0001-2	AWG#24-28	Phosphor bronze	Tin plating	10,000 pcs/reel	YES
GT16-30SCF	766-0055-1	AWG#30	Phosphor bronze	Tin plating	10,000 pcs/reel	

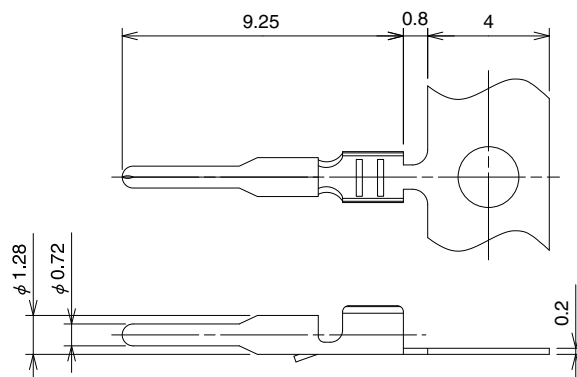
#### ● Insulator (Common Use)



Part Number	HRS No.	Material	Color	Packaging	RoHS
GT16-SC	766-0002-5	PBT	White	1 piece	YES

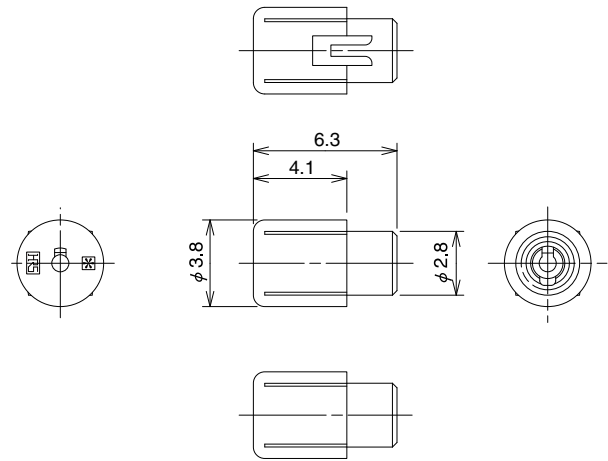
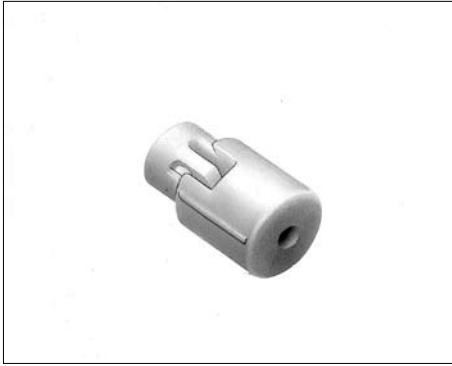
### M Connectors (Common Use)

#### ● Center Terminals



Part Number	HRS No.	Conductor Size	Material	Finish	Packaging	RoHS
GT16-2428PCF	766-0006-6	AWG#24-28	Brass	Tin plating	10,000 pcs/reel	YES
GT16-30PCF	766-0015-7	AWG#30	Brass	Tin plating	10,000 pcs/reel	

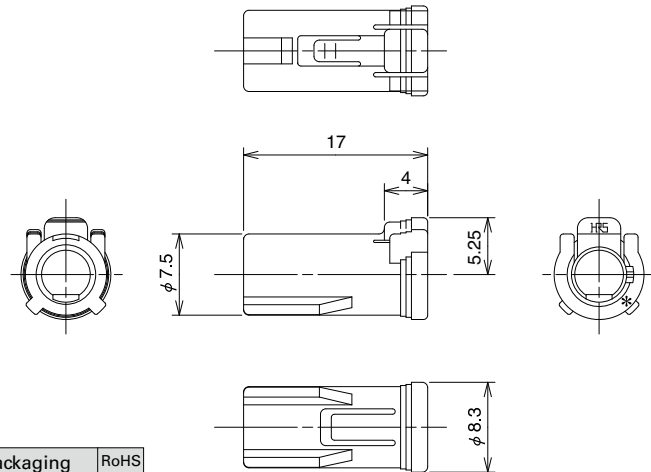
### ● Insulator (Common Use)



Part Number	HRS No.	Material	Finish	Packaging	RoHS
GT16-PC	766-0007-9	PBT	White	1 piece	YES

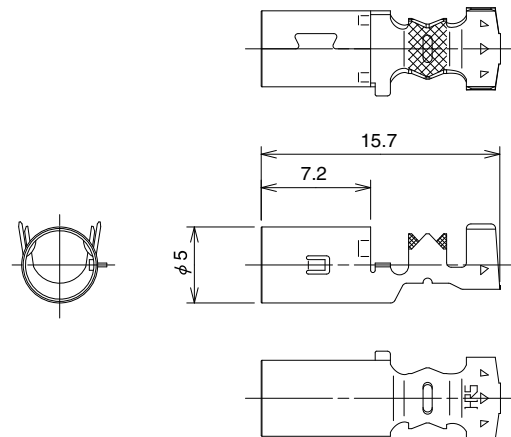
### ■ After-Market F Part Connect(No retainer required type)

#### ● Housing



Part Number	HRS No.	Material	Finish	Packaging	RoHS
GT16-1S-HU	766-0004-0	PBT	Light Gray	1 piece	YES
GT16-1S-HU(P)	766-0067-0	PBT	Black	1 piece	

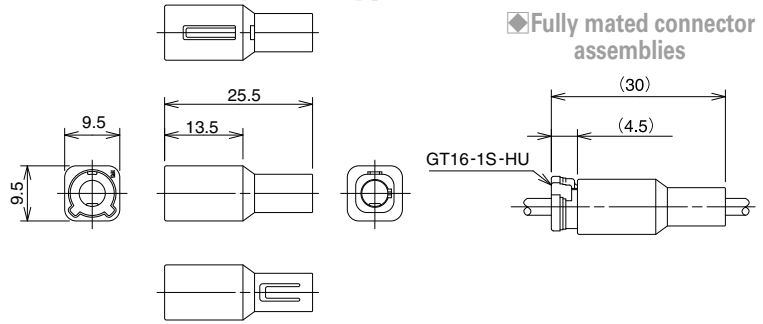
#### ● Outer terminal



Part Number	HRS No.	Applicable Cable	Material	Finish	Packaging	RoHS
GT16-/1.6-2.9SC	766-0003-8	1.5D-2V or equivalent	Phosphor bronze	Tin plating	1 piece	YES
GT16-/0.7-1.5SC	766-0056-4	0.8D-2V or equivalent	Phosphor bronze	Tin plating	1 piece	
GT16-/1.1-2.2SC	766-0088-0	1.0D-2V or equivalent	Phosphor bronze	Tin plating	1 piece	

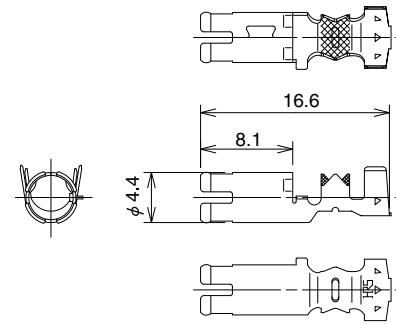
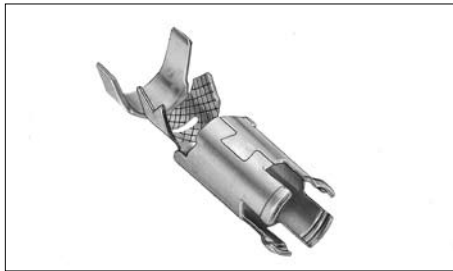
## After-Market Parts M Connector(No retainer required type)

### ● Housing



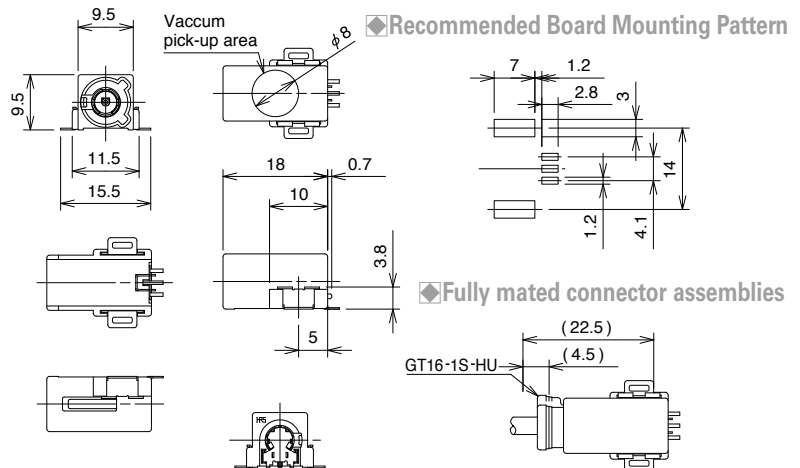
Part Number	HRS No.	Material	Finish	Packaging	RoHS
GT16-1P-HU	766-0009-4	PBT	Light Gray	1 piece	YES
GT16-1P-HU(P)	766-0068-3	PBT	Black	1 piece	YES

### ● Outer terminals

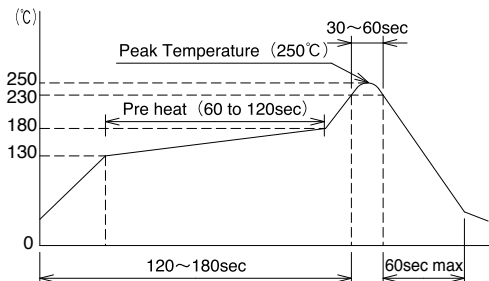


Part Number	HRS No.	Applicable Cable	Material	Color	Packaging	RoHS
GT16-/1.6-2.9PC	766-0008-1	1.5D-2V or equivalent	Phosphor bronze	Tin plating	1 piece	YES
GT16-/0.7-1.5PC	766-0016-0	0.8D-2V or equivalent	Phosphor bronze	Tin plating	1 piece	YES

### ● Printed Circuit Board Type (SMT Type)



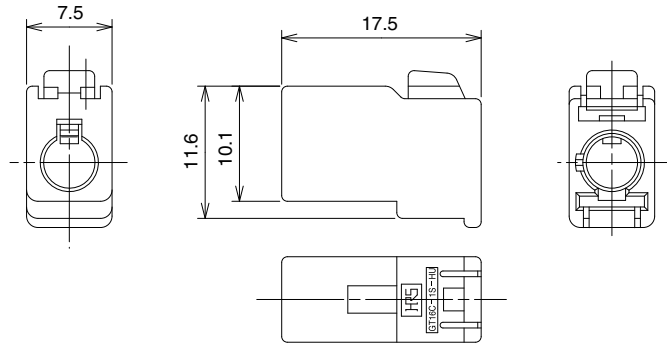
### ◆ Recommended Temperature Profile



Part Number	HRS No.	Material	Color/Finish	Packaging	RoHS
GT16-1P-H	766-0005-3	PPS(Housing)	Light Gray	1 piece	YES
		Phosphor bronze (Innner Terminal)	Tin plating		
		Phosphor bronze (Outer Terminal)	Tin plating		
		PPS (Insulator)	Natural		
		Phosphor bronze (Shield plate)	Tin plating		
		Brass (Metal fitting)	Tin plating		
GT16-1P-H(P)	766-0066-8	PPS(Housing)	Black	1 piece	
		Phosphor bronze (Innner Terminal)	Tin plating		
		Phosphor bronze (Outer Terminal)	Tin plating		
		PPS (Insulator)	Natural		
		Phosphor bronze (Shield plate)	Tin plating		
		Brass (Metal fitting)	Tin plating		

## Genuine Market Parts F Connectors

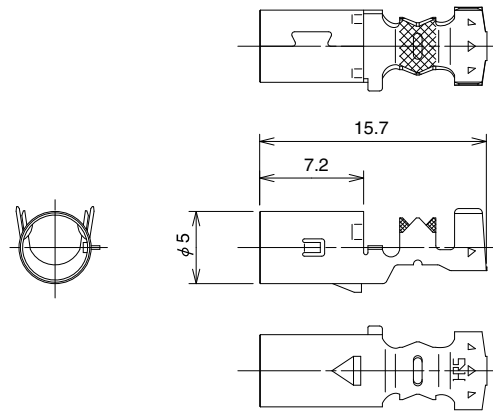
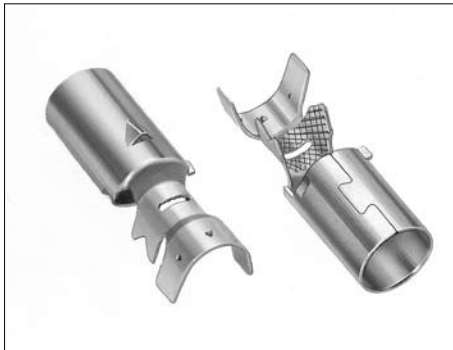
### ● Housing (Retainer Stopper Specification)



Part Number	HRS No.	Material	Finish	Packaging	RoHS
GT16C-1S-HU	766-0010-3	PBT	Light Gray	1 piece	YES
GT16C-1S-HU(A)	766-0060-1	PBT	Brown	1 piece	
GT16C-1S-HU(B)	766-0061-4	PBT	Green	1 piece	

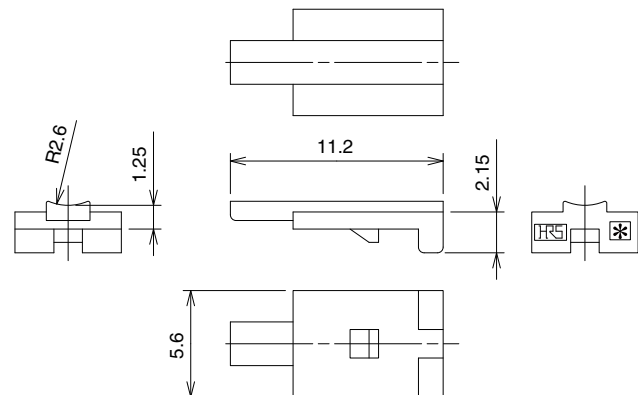
Note : This product is used in conjunction with retainer GT16C-1P/S-R (CL766-0011-6) which is a separate item.

### ● Outer terminal (Retainer Stopper Specification)



Part Number	HRS No.	Applicable Cable	Material	Finish	Packaging	RoHS
GT16C-/1.6-2.9SC	766-0012-9	1.5D-2V or equivalent	Phosphor bronze	Tin plating	1 piece	YES
GT16C-/0.7-1.5SC	766-0057-7	0.8D-2V or equivalent	Phosphor bronze	Tin plating	1 piece	
GT16C-/1.1-2.2SC	766-0089-3	1.0D-2V or equivalent	Phosphor bronze	Tin plating	1 piece	

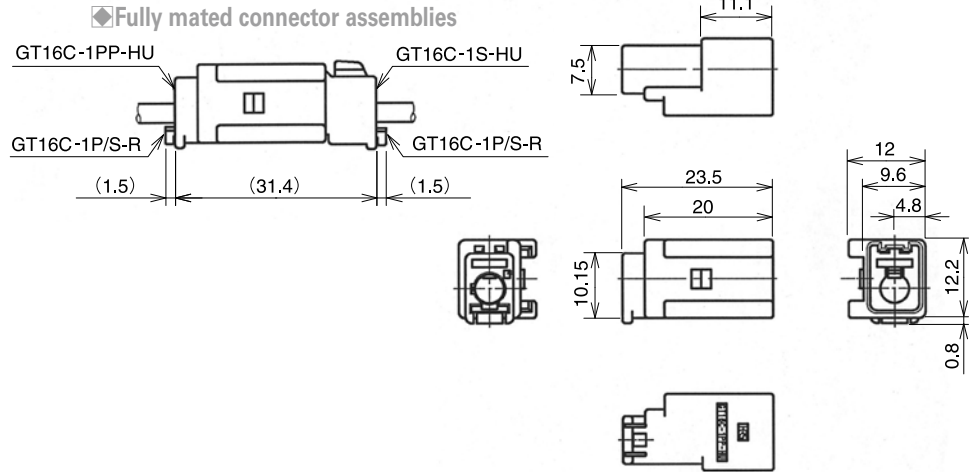
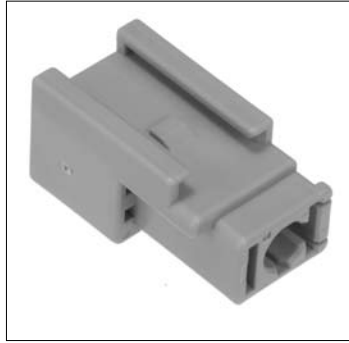
### ● Retainer



Part Number	HRS No.	Material	Finish	Packaging	RoHS
GT16C-1P/S-R	766-0011-6	PBT	Dark Gray	1 piece	YES

## ■ Genuine Market Parts M Connectors

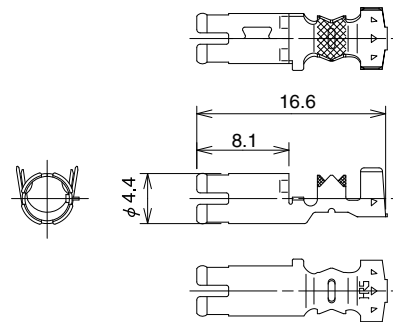
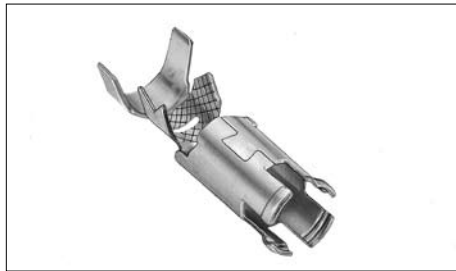
### ● Housing(Retainer Stopper Specification)



Part Number	HRS No.	Material	Color	Packaging	RoHS
GT16C-1PP-HU	CL766-0029-1	PBT	Light Gray	1 piece	YES
GT16C-1PP-HU(A)	CL766-0064-2	PBT	Brown	1 piece	
GT16C-1PP-HU(B)	CL766-0065-5	PBT	Green	1 piece	

Note: Use this product with separate retainer part GT16C-1P/S-R(CL766-0011-6).

### ● Outer terminal(Retainer Stopper Specification)

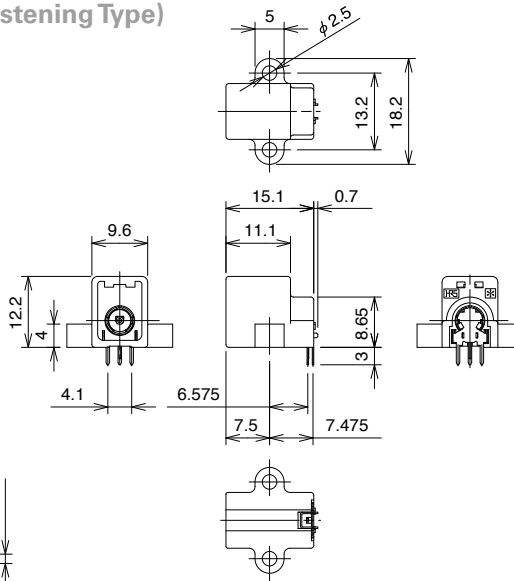
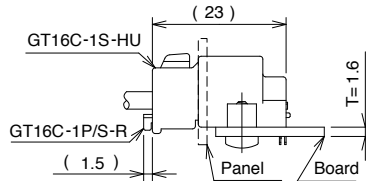


Part Number	HRS No.	Applicable Cable	Material	Finish	Packaging	RoHS
GT16C-/1.6-2.9PC	766-0019-8	1.5D-2V or equivalent	Phosphor bronze	Tin plating	1 piece	YES
GT16C-/0.7-1.5PC	766-0018-5	0.8D-2V or equivalent	Phosphor bronze	Tin plating	1 piece	

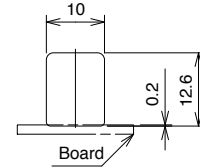
## ● Printed Circuit Board Type (Reinforced Lock and Screw Fastening Type)



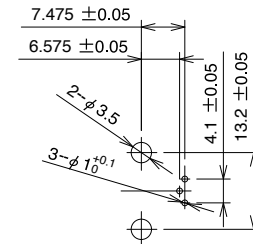
◆ Fully mated connector assemblies



◆ Recommended Panel Cut-out



◆ Recommended Board Mounting Pattern



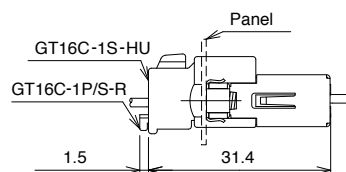
Part Number	HRS No.	Material	Finish	Packaging	RoHS
GT16C-1P-DS	766-0013-1	PBT(Housing)	Light Gray	1 piece	YES
		Phosphor bronze (Inner Terminal)	Tin plating		
		Phosphor bronze (Outer Terminal)	Tin plating		
		PPS (Insulator)	Natural		
GT16C-1P-DS(A)	766-0062-7	Phosphor bronze (Shield plate)	Tin plating	1 piece	
		PBT(Housing)	Brown		
		Phosphor bronze (Inner Terminal)	Tin plating		
		Phosphor bronze (Outer Terminal)	Tin plating		
GT16C-1P-DS(B)	766-0063-0	PPS (Insulator)	Natural	1 piece	
		Phosphor bronze (Shield plate)	Tin plating		
		PBT(Housing)	Green		
		Phosphor bronze (Inner Terminal)	Tin plating		
		Phosphor bronze (Outer Terminal)	Tin plating		
		PPS (Insulator)	Natural		
		Phosphor bronze (Shield plate)	Tin plating		
		Phosphor bronze (Shield plate)	Tin plating		

Note : Use mounting screws of M3 with nominal diameter 3L-6.

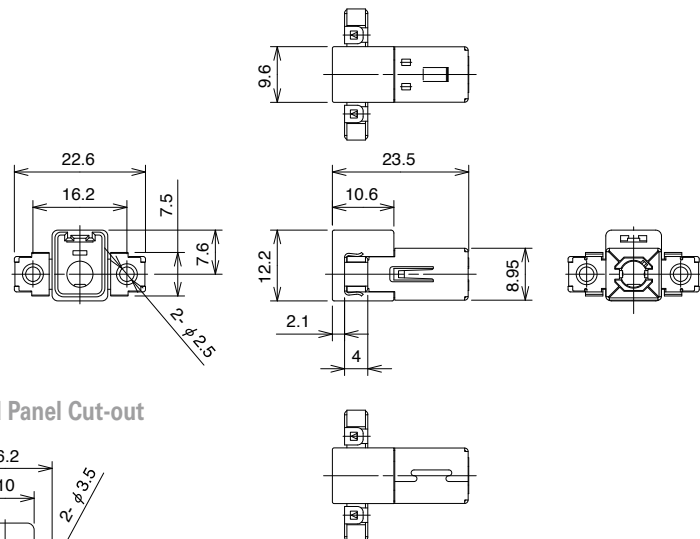
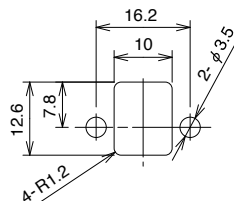
## ● Panel Mounting Type



◆ Fully mated connector assemblies



◆ Recommended Panel Cut-out



Part Number	HRS No.	Material	Color/Finish	Packaging	RoHS
GT16CB-1PP-HU	766-0017-2	PBT (Housing)	Light Gray	1 piece	YES
		Copper alloy (Ground terminal)	Tin plating		

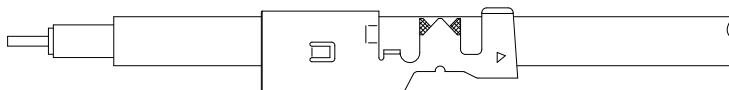
Note : Use mounting screws of M3 with nominal diameter 3L-6.

## ◆GT16G Wiring Method

1. Pass the cable through the outside tube.



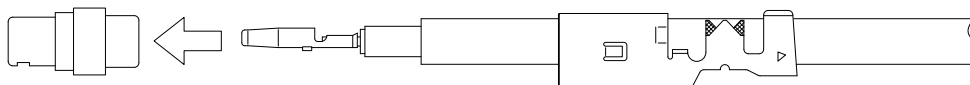
2. Strip the cable.



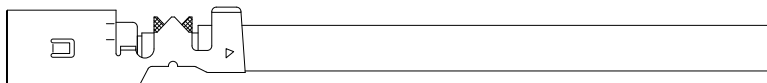
3. Crimp the center terminal.



4. Insert the crimped terminal into the Insulator.



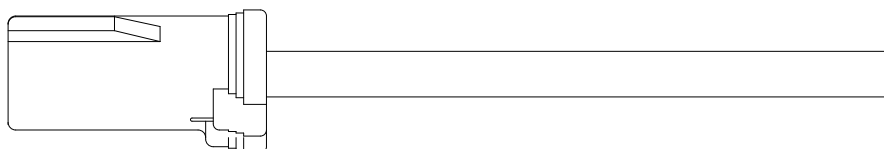
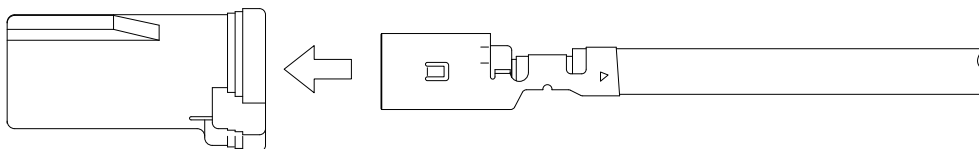
5. Insert the Insulator into the outside tube.



6. Crimp the outside tube.



7. Insert the terminal into the housing.



Completion



## ◆ F Connector Components Table

Inner Terminal	Insulator	Outer terminal	Housing	Retainer
GT16-2428SCF GT16-30SCF	GT16-SC	GT16-/1.6-2.9SC	GT16-1S-HU	Not Used
		GT16-/0.7-1.5SC	GT16-1S-HU(P)	
		GT16-/1.1-2.2SC		
		GT16C-/1.6-2.9SC	GT16C-1S-HU	GT16C-1P/S-R
		GT16C-/0.7-1.5SC	GT16C-1S-HU(A)	
		GT16C-/1.1-2.2SC	GT16C-1S-HU(B)	

## ◆ Mating Table

F Connectors	M Connectors
GT16-1S-HU	GT16-1P-HU
	GT16-1P-H
GT16C-1S-HU	GT16CB-1PP-HU
	GT16C-1PP-HU
	GT16C-1P-DS

## ◆ M Connector Components Table

Inner Terminal	Insulator	Outer terminal	Housing	Retainer
GT16-2428PCF GT16-30PCF	GT16-PC	GT16-/1.6-2.9PC	GT16-1P-HU	Not Used
		GT16-/0.7-1.5PC	GT16-1P-HU(P)	
			GT16CB-1PP-HU	
		GT16C-/1.6-2.9PC	GT16C-1PP-HU	GT16C-1P/S-R
		GT16C-/0.7-1.5PC	GT16C-1PP-HU(A)	
			GT16C-1PP-HU(B)	

Printed Circuit Board Type
GT16-1P-H
GT16-1P-H(P)
GT16C-1P-DS
GT16C-1P-DS(A)
GT16C-1P-DS(B)

## ◆ Key Variation

F Connectors	M Connectors
GT16-1S-HU(P)	GT16-1P-HU(P)
	GT16-1P-H(P)
GT16C-1S-HU(A)	GT16C-1PP-HU(A)
	GT16C-1P-DS(A)
GT16C-1S-HU(B)	GT16C-1PP-HU(B)
	GT16C-1P-DS(B)

## ◆ Tools

User's manuals are available. Please ask your Hirose Electric account representative.

### Automatic Crimping Machine



The photograph shows just one example. The product is subject to change.

Part Number CM-105

\* See the table below for the product number of the applicator.

### Specifications

Item	Specification	Remarks
Specification	1.5ton	
Stroke Length	30mm	
Number of strokes	200spm (50Hz)	240spm (60Hz)
Weight	75kg	
Motor	0.2kW	AC100V
Crimping speed	2,000~4,000/H	

### ● Harness Tool

Product Number	HRS No.	Applicator Product Number
GT16-2428SCF	901-5108-4	AP105-GT16-2428
GT16-2428PCF		
GT16-30PCF	901-5124-0	AP105-GT16-30
GT16-30SCF		

Product Number	HRS No.	Jig
GT16-/1.6-2.9SC	902-5058-4	GT16-1.6-2.9/CK-MP
GT16C-/1.6-2.9SC		
GT16-/1.6-2.9PC		
GT16C-/1.6-2.9PC		
GT16-/0.7-1.5PC	902-5064-7	GT16-0.7-1.5/CK-MP
GT16C-/0.7-1.5PC		
GT16-/0.7-1.5SC		
GT16C-/0.7-1.5SC		

### Hand Press

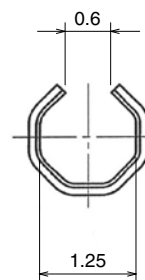
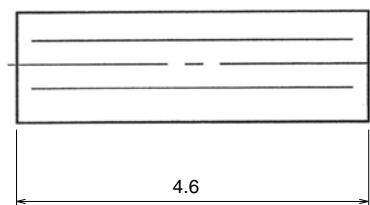
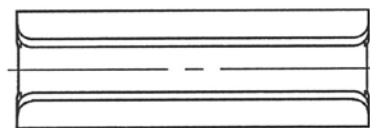


\* Crimp height setting tables are available for each cable type. Please contact your nearest Hirose Electric account representative. Different cables will require different crimp height settings.

## GT16G Series

## F and M Common Parts

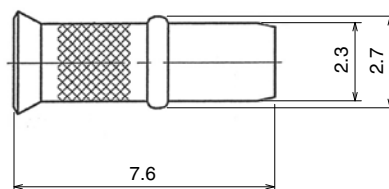
## ● Terminal Ferrule



Part Number	HRS No.	Material	Finish	Packaging	RoHS
GT16G-FR	766-0028-9	Phosphor bronze	Tin plating	1piece	YES

## F and M Common Parts

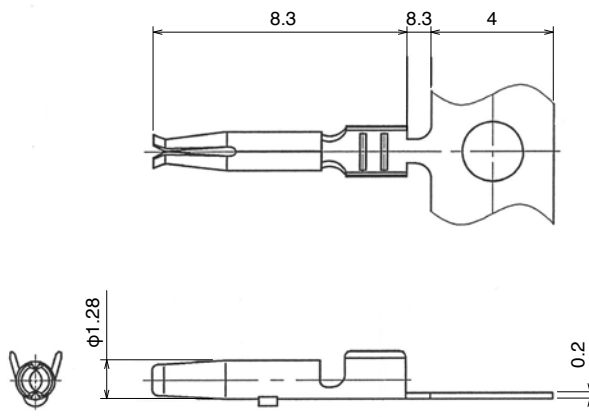
## ● Outer Ferrule



Part Number	HRS No.	Material	Finish	Packaging	RoHS
GT16G-1.5DHQS	766-0027-6	Phosphor bronze	Tin plating	1piece	YES

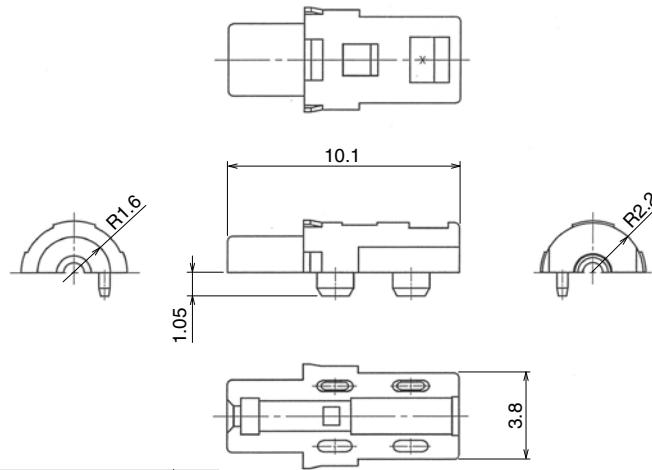
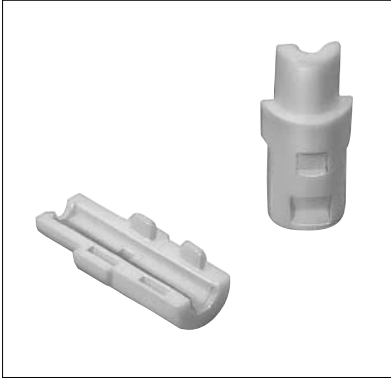
## F Common Parts

## ● Center Terminal



Part Number	HRS No.	Conductor Size (AWG)	Material	Finish	Packaging	RoHS
GT16G-2428SCF	766-0022-2	AWG#24~28	Phosphor bronze	Tin plating	10,000 pcs/reel	YES

## ● Insulator

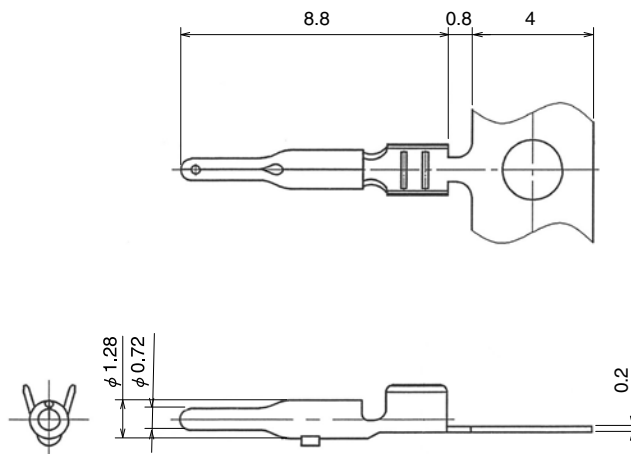


Part Number	HRS No.	Material	Color	Packaging	RoHS
GT16G-SC	766-0023-5	PBT	Natural	1 piece	YES

Note : Two of these products are used per connection.

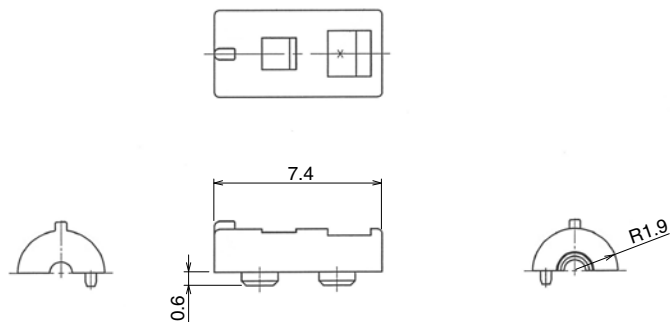
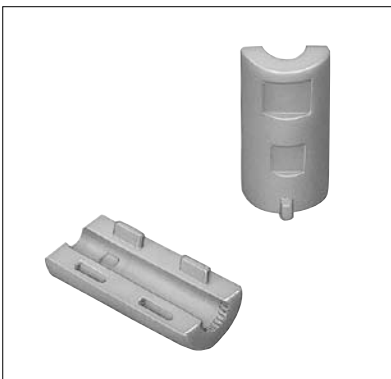
## M Common Parts

## ● Center Terminal



Part Number	HRS No.	Conductor Size (AWG)	Material	Finish	Packaging	RoHS
GT16G-2428PCF	766-0046-0	AWG#24~28	Brass	Tin plating	10,000 pcs/reel	YES
GT16G-30PCF	766-0070-5	AWG#30	Brass	Tin plating	10,000 pcs/reel	

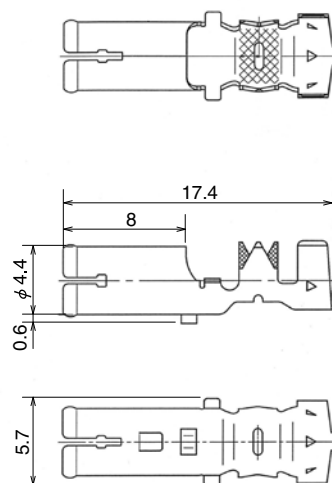
## ● Insulator



Part Number	HRS No.	Material	Color	Packaging	RoHS
GT16G-PC	766-0047-3	PBT	Natural	1 piece	YES
GT16G-0.8PC	766-0071-8	PBT	Natural	1 piece	

Note : Two of these products are used per connection.

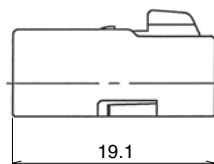
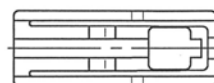
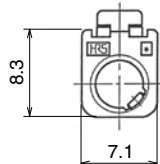
## ● Outer Terminal



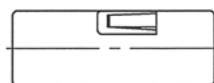
Part Number	HRS No.	Applicable cable	Material	Finish	Packaging	RoHS
GT16G-/1.6-2.9PC	766-0048-6	1.5D-2W or equivalent	Phosphor bronze	Tin plating	1piece	YES
GT16G-/0.7-1.5PC	766-0072-0	0.8D-2V or equivalent	Phosphor bronze	Tin plating	1piece	YES

## ■ F Connector(No retainer required type)

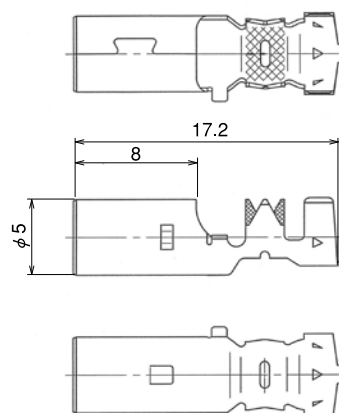
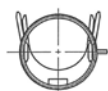
### ● Housing



Part Number	HRS No.	Material	Color	Packaging	RoHS
GT16GM-1S-HU	766-0033-9	PBT	Black	1piece	YES



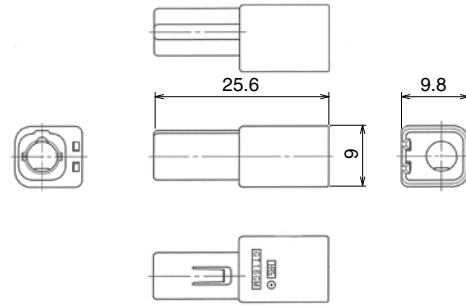
## ● Outer Terminal



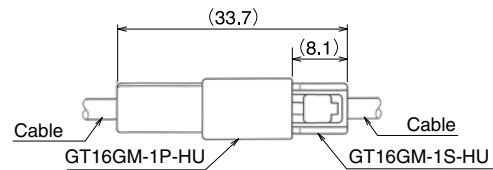
Part Number	HRS No.	Applicable cable	Material	Finish	Packaging	RoHS
GT16GM-/1.6-2.9SC	766-0025-0	1.5D-2W or equivalent	Phosphor bronze	Tin plating	1piece	YES

## ■ M Connector(No retainer required type)

### ● Housing

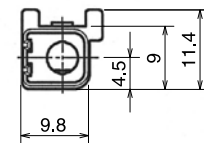
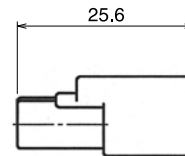
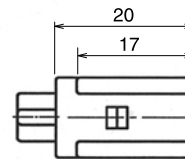


### ◆ Fully mated connector assemblies

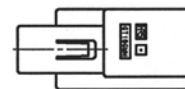
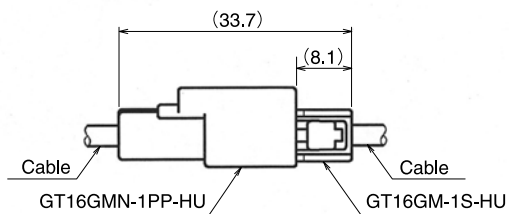


Part Number	HRS No.	Material	Color	Packaging	RoHS
GT16GM-1P-HU	766-0050-8	PBT	Black	1piece	YES

### ● Housing (Bracket mounting type)



### ◆ Fully mated connector assemblies



Part Number	HRS No.	Material	Color	Packaging	RoHS
GT16GMN-1PP-HU	766-0051-0	PBT	Black	1piece	YES

GT 5

GT 13

Coaxial cable connection of Antennas, Sensors, and Communication Trunk Lines

PO5G

GT 11

GT 17

GT 19

GT 26

GT 27

GT 3

GT 6W

GT 7

GT 10

GT 18W

GT 15

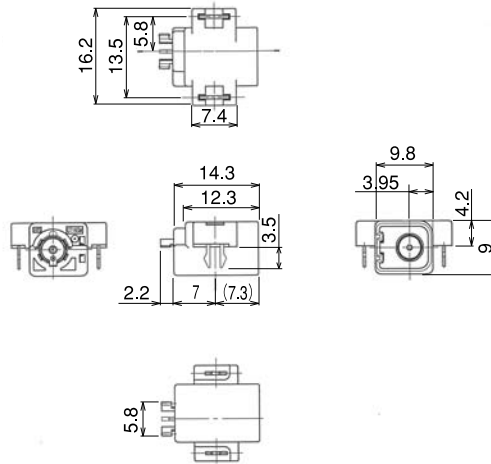
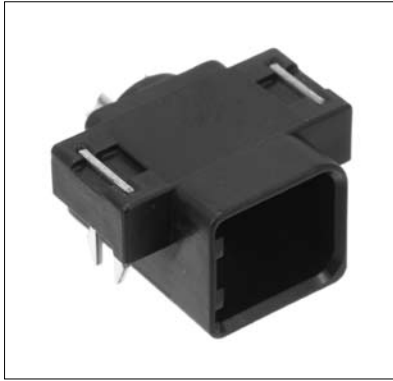
GT 8

GT 9

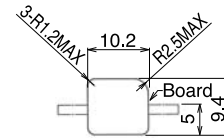
GT 25

GT 22

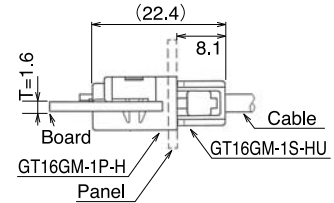
### ● Board Type (Lock Pin Type)



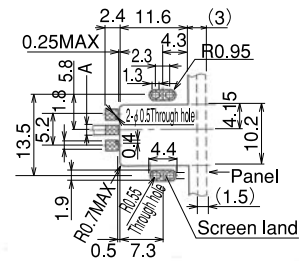
#### ◆ Recommended Panel Cutout



#### ◆ Shown with inserted retainer



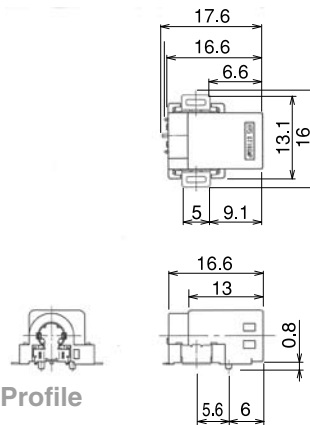
#### ◆ Recommended Board Mounting Pattern



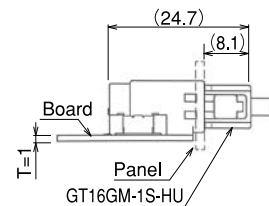
Part Number	HRS No.	Material	Color/Finish	Packaging	RoHS
GT16GM-1P-H	766-0032-6	PBT(Housing)	Black	1piece	YES
		Phosphor bronze (Inner terminal)	Tin plating		
		Phosphor bronze (Outer terminal)	Tin plating		
		PBT(insulator)	Natural		
		Brass (Lock pin)	Tin plating		

\* Use micro strip line and set so that dimension A has a characteristic impedance of 50Ω .

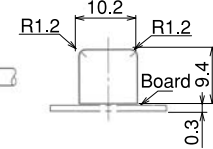
### ● Board Type (SMT Type)



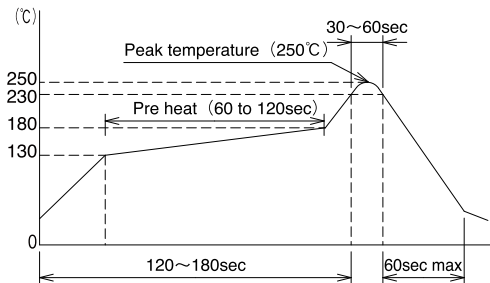
#### ◆ Shown with inserted retainer



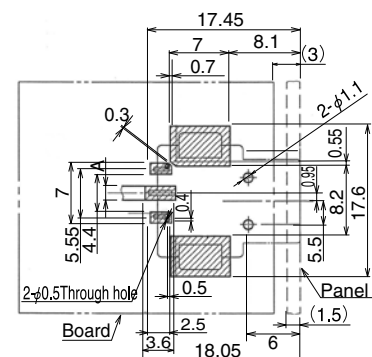
#### ◆ Recommended Panel Cutout



#### ◆ Recommended Temperature Profile



#### ◆ Recommended Board Mounting Pattern

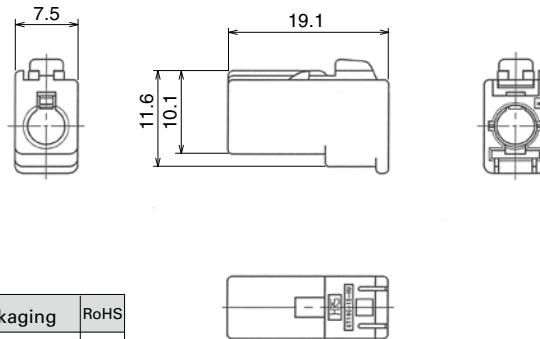


Part Number	HRS No.	Material	Color/Finish	Packaging	RoHS
GT16GMP-1P-H	766-0052-3	PPS(Housing)	Black	200 pcs/reel	YES
		Phosphor bronze (Inner terminal)	Tin plating		
		Phosphor bronze (Outer terminal)	Tin plating		
		PPS(insulator left and right)	Natural		
		Phosphor bronze	Tin plating		
		Brass (Reinforced fittings)	Tin plating		

\* Use micro strip line and set so that dimension A has a characteristic impedance of 50Ω .

## F Connector(Retainer required type)

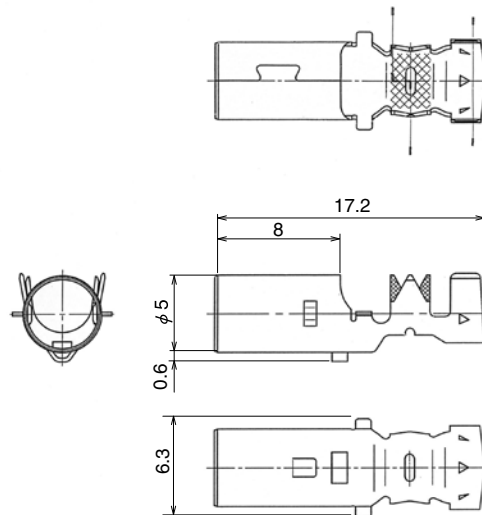
### ● Housings



Part Number	HRS No.	Material	Color	Packaging	RoHS
GT16G-1S-HU	766-0026-3	PBT	Light Gray	1 piece	YES
GT16G-1S-HU(24)	766-0026-3-24	PBT	Black	1 piece	

Note : Use this product with separate retainer part GT16C-1P/S-R (CL766-0011-6).

### ● Outer Terminal



Part Number	HRS No.	Applicable cable	Material	Finish	Packaging	RoHS
GT16G-/1.6-2.9SC	766-0024-8	1.5D-2W or equivalent	Phosphor bronze	Tin plating	1 piece	YES

GT 5

GT 13

GT 16

PO5G

GT 11

GT 17

GT 19

GT 26

GT 27

GT 3

GT 6W

GT 7

GT 10

GT 18W

GT 15

GT 8

GT 9

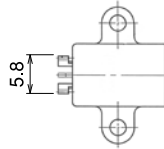
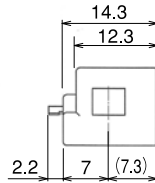
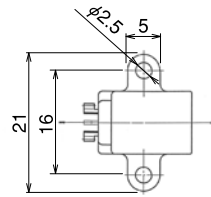
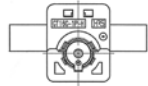
GT 25

GT 22

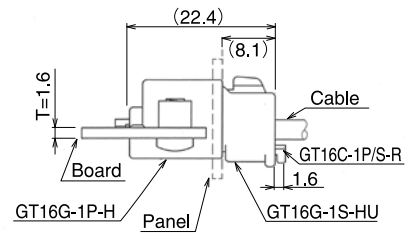


## Genuine Market Parts M Connectors

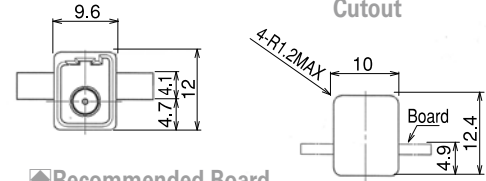
### ● Board Type (Screw Fastening Type)



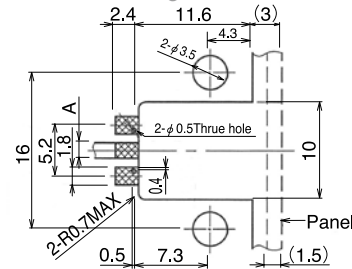
◆ Shown with inserted retainer



◆ Recommended Panel Cutout



◆ Recommended Board Mounting Pattern

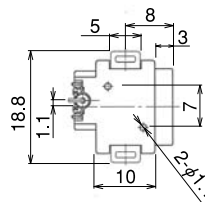
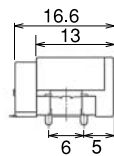
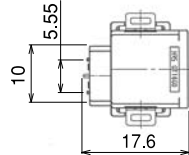
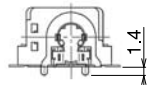


Part Number	HRS No.	Material	Color/Finish	Packaging	RoHS
GT16G-1P-H	766-0021-0	PBT(Housing)	Light Gray	1piece	YES
		Phosphor bronze (Inner terminal)	Tin plating		
		Phosphor bronze (Outer terminal)	Tin plating		
		PBT(Insulator)	Natural		

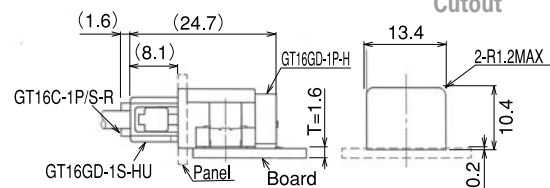
Note 1: Suitable mounting screws are JIS B 1122 pan head tapping screws class 2, nominal diameter 3, length 6.

Note 2: Use micro strip line and set so that dimension A has a characteristic impedance of 50Ω

### ● Board Type (SMT Type)

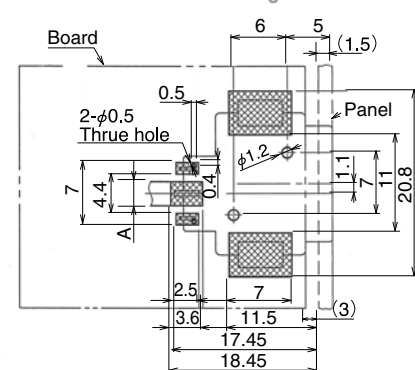


◆ Shown with inserted retainer

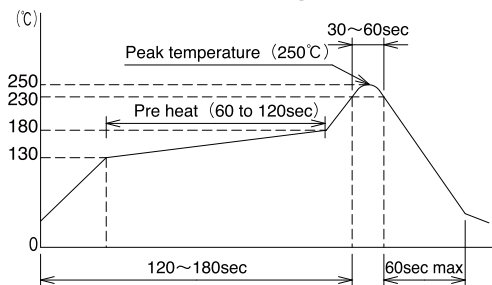


◆ Recommended Panel Cutout

◆ Recommended Board Mounting Pattern



◆ Recommended Temperature Profile



Part Number	HRS No.	Material	Color,Finish	Packaging	RoHS
GT16GD-1P-H	766-0044-5	PPS(Housing)	Black	200 pcs/reel	YES
		Phosphor bronze (Inner terminal)	Tin plating		
		Phosphor bronze (Outer terminal)	Tin plating		
		PPS(Insulator left and right)	Natural		
		Phosphor bronze(Shield plate)	Tin plating		
		Brass (reinforced fittings)	Tin plating		

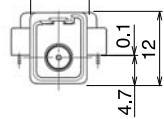
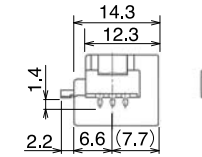
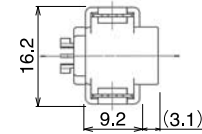
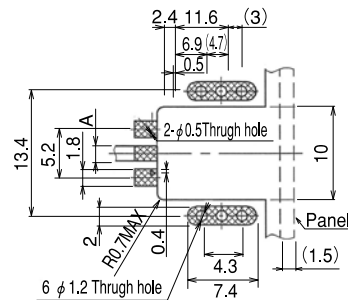
Note : Use micro strip line and set so that dimension A has a characteristic impedance of 50Ω .



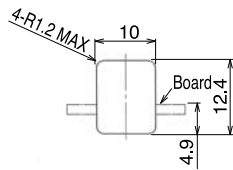
# ● Board Type (Lead Reflow Type)



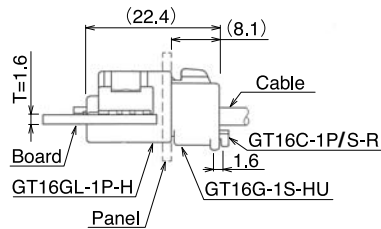
## ◆ Recommended Board Mounting Pattern



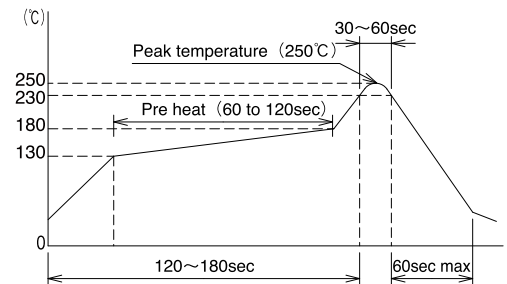
## ◆ Recommended Panel Cutout



## ◆ Shown with inserted retainer



## ◆ Recommended Temperature Profile



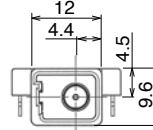
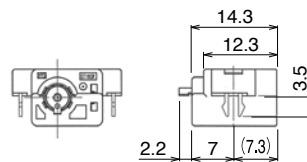
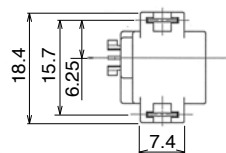
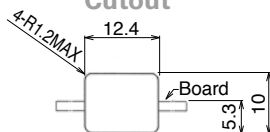
Note : Use micro strip line and set so that dimension A has a characteristic impedance of 50Ω .

Part Number	HRS No.	Material	Color/Finish	Packaging	RoHS
GT16GL-1P-H(70)	766-0043-2-70	PPS(Housing)	Light Gray	200 pcs/reel	YES
		Phosphor bronze (Inner terminal)	Tin plating		
		Phosphor bronze (Outer terminal)	Tin plating		
		PBT(Insulator)	Natural		
		Brass (reinforced fittings)	Tin plating		
GT16GL-1P-H(71)	766-0043-2-71	PPS(Housing)	Black	200 pcs/reel	YES
		Phosphor bronze (Inner terminal)	Tin plating		
		Phosphor bronze (Outer terminal)	Tin plating		
		PBT(Insulator)	Natural		
		Brass (reinforced fittings)	Tin plating		

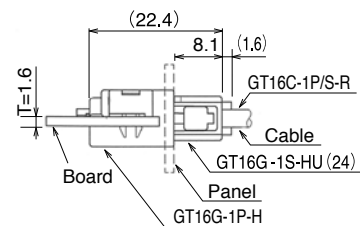
# ● Board Type (Lock Pin Type)



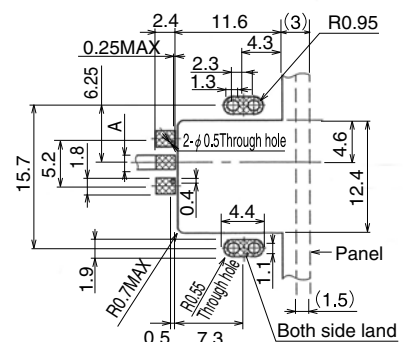
## ◆ Recommended Panel Cutout



## ◆ Shown with inserted retainer



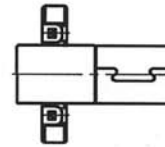
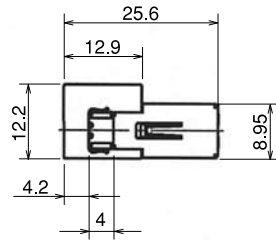
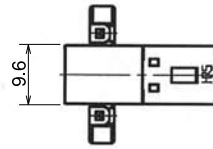
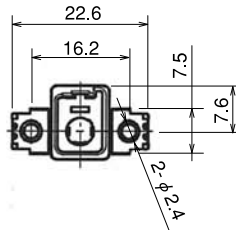
## ◆ Recommended Board Mounting Pattern



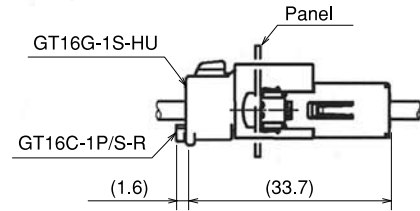
Note : Use micro strip line and set so that dimension A has a characteristic impedance of 50Ω .

Part Number	HRS No.	Material	Color/Finish	Packaging	RoHS
GT16GR-1P-H	766-0059-2	PBT(Housing)	Black	1piece	YES
		Phosphor bronze (Inner terminal)	Tin plating		
		Phosphor bronze (Outer terminal)	Tin plating		
		PBT(Insulator)	Natural		
		Brass (Lock pin)	Tin plating		

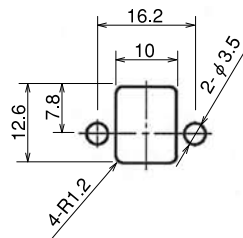
● Panel Mounting Type



◆ Fully mated connector assemblies

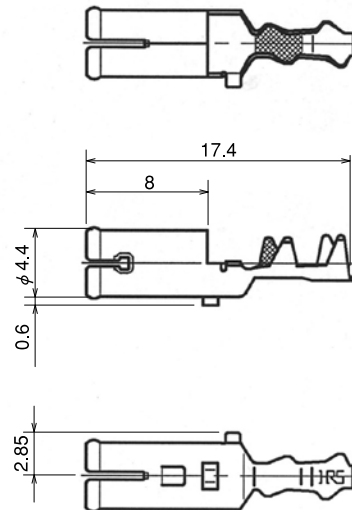


◆ Recommended Panel Cut-out



Part Number	HRS No.	Material	Color/Finish	Packaging	RoHS
GT16GB-1PP-HU	CL766-0074-6	PBT (Housing)	Light Gray	1piece	YES
		Copper alloy (Ground terminal)	Tin plating		

● Outer terminal (Used with GT16GB-1PP-HU)



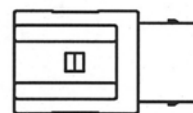
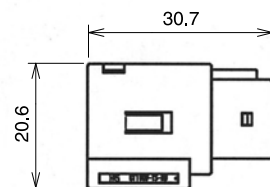
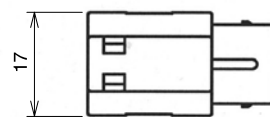
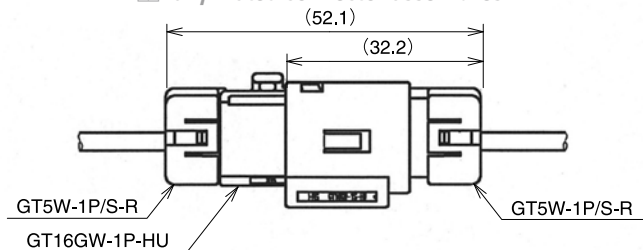
Part Number	HRS No.	Applicable Cable	Material	Finish	Packaging	RoHS
GT16GB-/0.7-1.5PC	CL766-0073-3	0.8D-2V or equivalent	Phosphor bronze	Tin plating	1piece	YES

## F Connector (Waterproof type)

### Housing



#### Fully mated connector assemblies

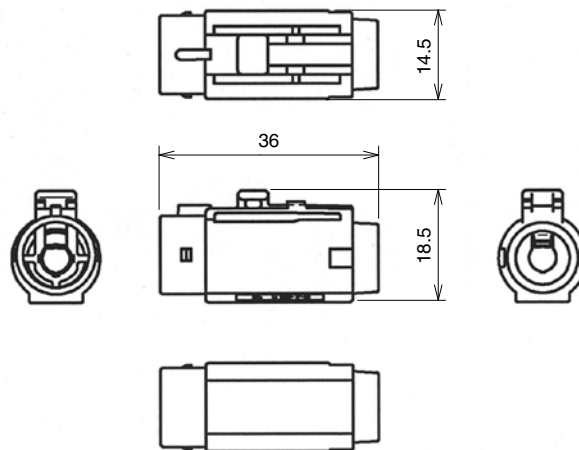


Part Number	HRS No.	Material	Color	Packaging	RoHS
GT16GW-1S-HU	CL766-0076-1	PBT	Black	1piece	YES
		Silicon rubber	White		

Note: Assemble main parts with separated retainer part GT5W-1P/S-R (CL755-0028-5).

## M Connector (Waterproof type)

### Housing



Part Number	HRS No.	Material	Color	Packaging	RoHS
GT16GW-1P-HU	CL766-0077-4	PBT	Black	1piece	YES
		Silicon rubber	White		

Note: Assemble main parts with separate retainer part GT5W-1P/S-R (CL755-0028-5).

GT 5

GT 13

Coaxial cable connection of Antennas, Sensors, and Communication Trunk Lines

PO5G

GT 11

GT 17

GT 19

GT 26

GT 27

GT 3

GT 6W

GT 7

GT 10

GT 18W

GT 15

GT 8

GT 9

GT 25

GT 22

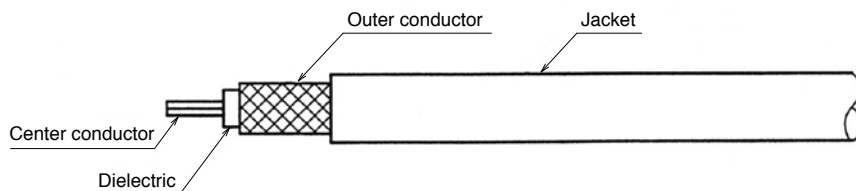
## GT16G Wiring Method

### ①Strip the cable.

Note 1. See "Crimping Quality Standards Manual" for information about the end processing dimensions.

Note 2. Before performing end processing, arrange cable ends to be perpendicular. (There shall be no cable crushing.)

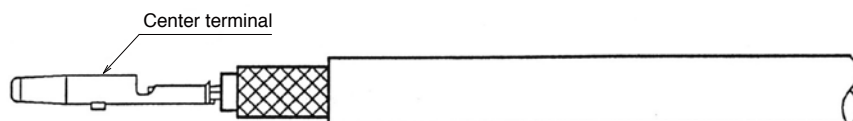
Note 3. Care must be taken so as not to damage the various cut portions of the center conductor, dielectric, and outer conductor.



### ②Crimp the center terminal with the special jig.

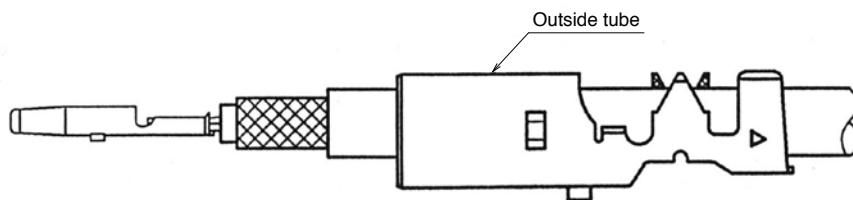
Note 1. See "Crimping Conditions Table" for information about the crimp height.

Note 2. See "Crimping Quality Standards Manual" for information about crimping standards.



### ③Place the outside tube over the cable.

Note 1. Pay attention to the placement direction of the outside tube.



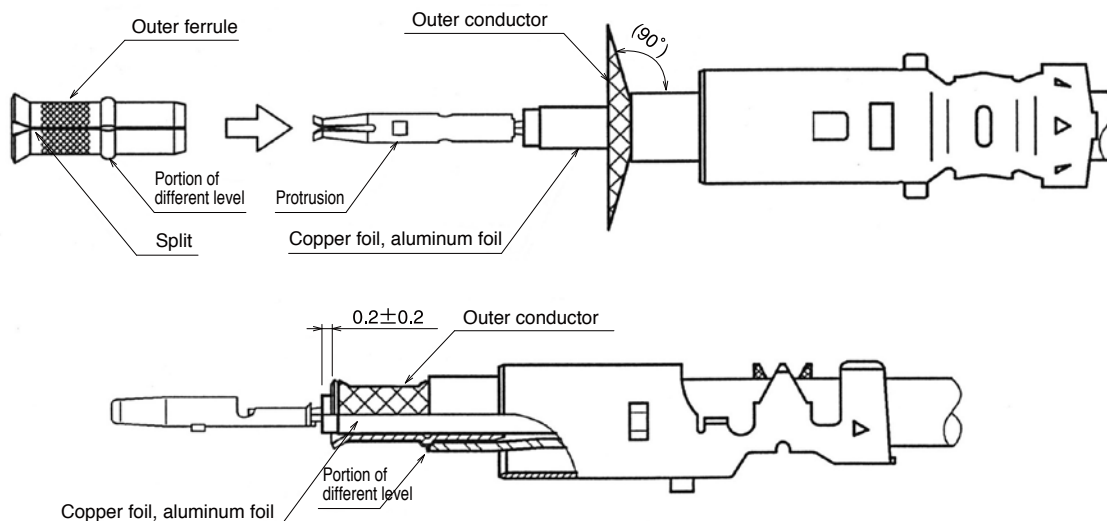
### ④Widen the external conductor with the special tool, place the outer ferrule, and return the external conductor over the outer ferrule.

Note 1. Spread only the outer conductor without unravelling. Copper foil or aluminum foil shall not be spread, but shall be on the inside of the outer ferrule.

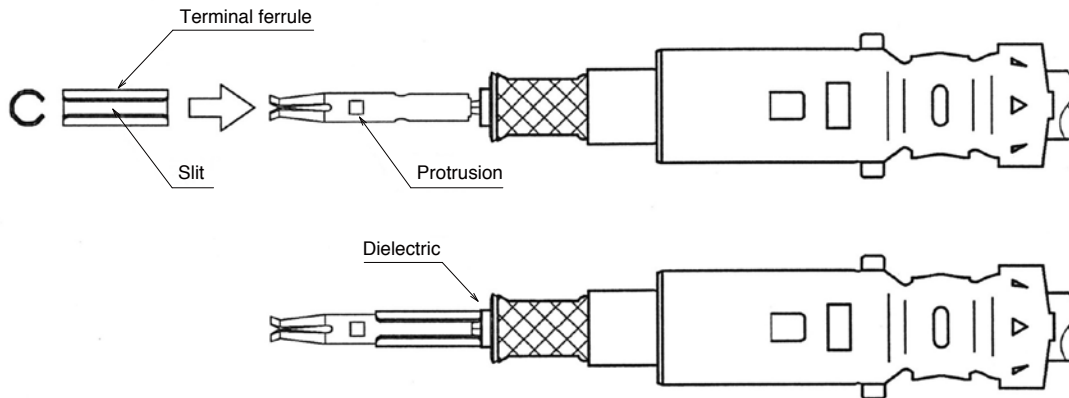
Note 2. The orientation of the outer ferrule shall be as indicated in the diagram. Align the slit of the outer ferrule with the protruding portion of the crimp terminal and insert.

Note 3. The outer ferrule shall be placed so that the portion of different level is inserted as far as the sheath end.

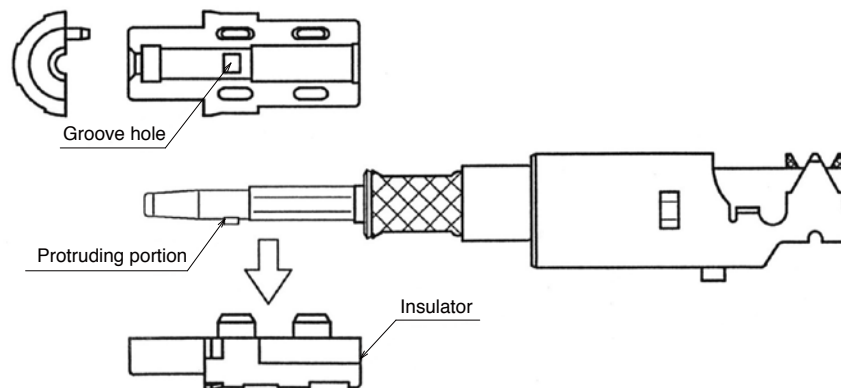
Note 4. Pay attention to pinching of the external conductor (i.e., biting into the sheath) during the placement.



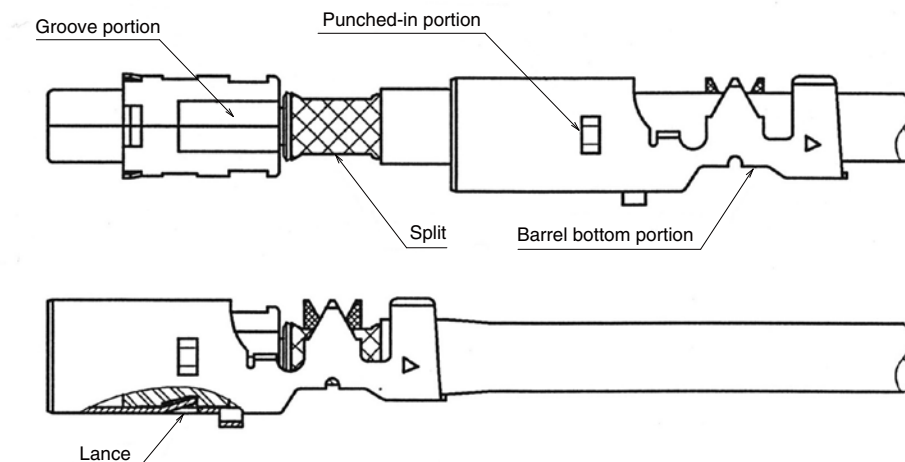
- ⑤ Using the special jig, insert the terminal ferrule from the coupling side of the crimp terminal until it reaches the end.  
 Note 1. Orient the terminal ferrule as illustrated in the diagram, align the slit portion of the terminal ferrule with the protruding portion of the crimp terminal, and then insert.



- ⑥ Set the aforementioned terminal block onto the insulator and enclose it from the top with one more insulator.  
 Note 1. Set the protruding portion of the crimp terminal in the groove hole of the insulator.  
 Note 2. Pull the cable with a force on the order of 4.9 N and check that the terminal block does not come out.



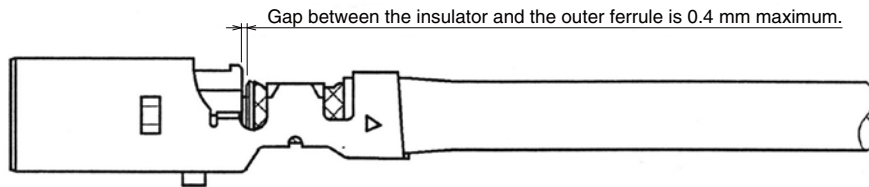
- ⑦ Use the special tool to cover the insulator with the outside tube, which was previously inserted.  
 Note 1. Orient the outside tube as illustrated in the diagram, align the punched-in portion of the outside tube with the groove portion of the insulator (so that at both left and right, the split of the outer ferrule is aligned with the barrel bottom portion of the outside tube), and then insert.  
 Note 2. Insert until the insulator stops at the lance of the outside tube.



⑧ Use the special jig to crimp the crimp terminal.

Note 1. See "Crimping Conditions Table" for information about the crimping height.

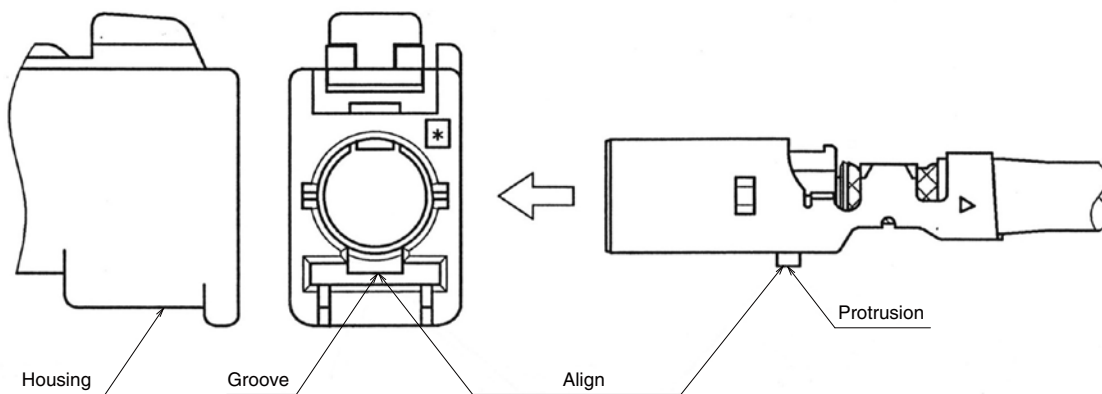
Note 2. See "Crimping Quality Standards Manual" for information about crimping standards.



⑨ Insert the aforementioned outside tube block into the housing.

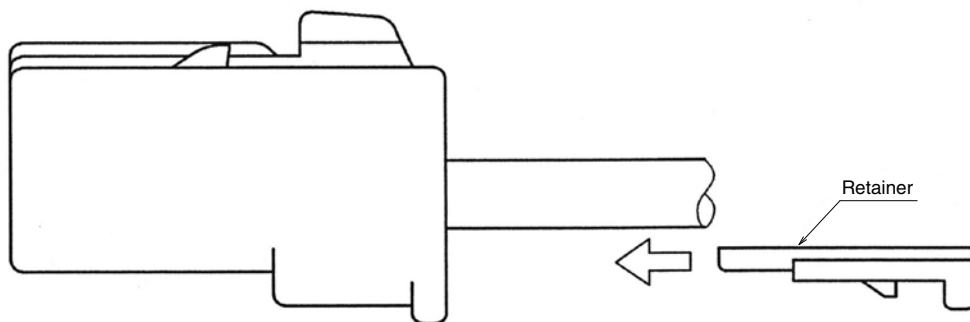
Note 1. Align the protruding portion of the outside tube with the groove portion of the housing, and then insert.

Note 2. Insert until the outside tube stops at the lance of the housing.

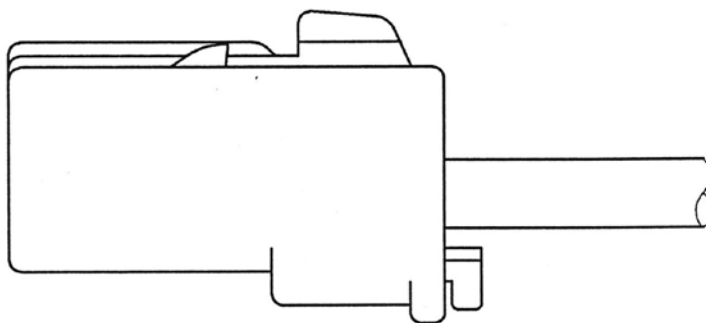


⑩ Insert the retainer into the housing.

Note 1. Insert until the retainer stops at the housing.



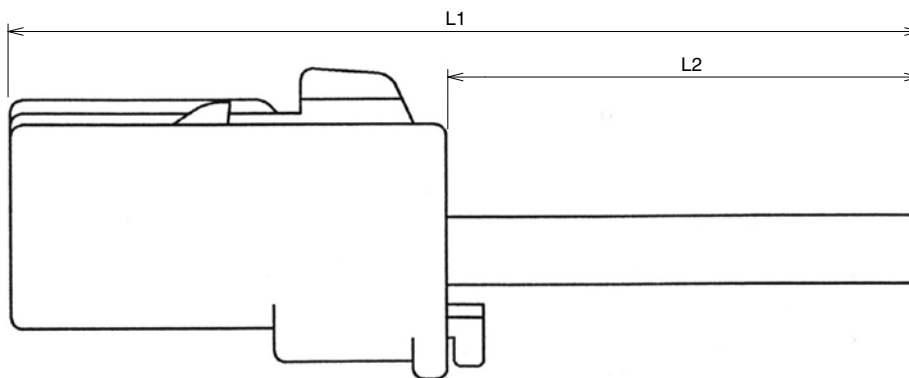
⑪ Inspect and complete the wiring.



Note: The length (L) dimension after wiring and the cut cable length are described below.

Cut cable length:  $L1 - 8.1$

$L2 + 11.0$



GT 5

GT 13

Coaxial cable connection of Antennas, Sensors, and Communication Trunk Lines

GT 16

PO5G

GT 11

GT 17

GT 19

GT 26

GT 27

GT 3

GT 6W

GT 7

GT 10

GT 18W

GT 15

GT 8

GT 9

GT 25

GT 22

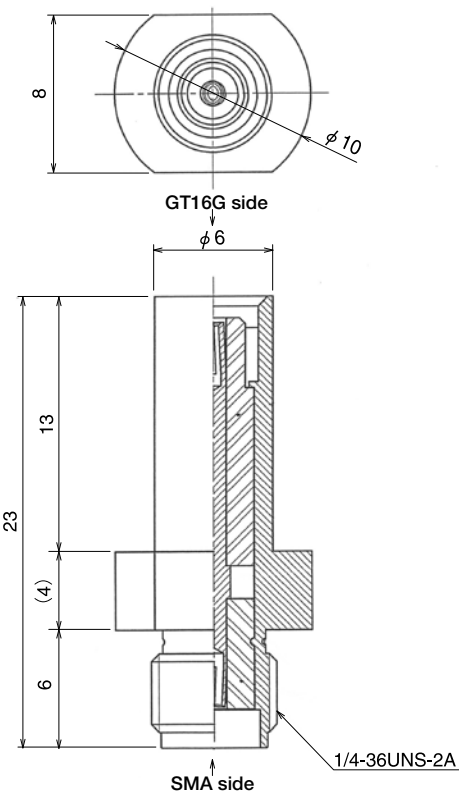
# Conversion Adapter

## SMA Conversion Adapter (coupling portion: GT16G side jack - SMA side jack)



Note: The adapter does not have a lock portion and thus can only be used for performance measurements.

Part Number	HRS No.	RoHS
GT16GS-HRMJ	766-0031-3	YES

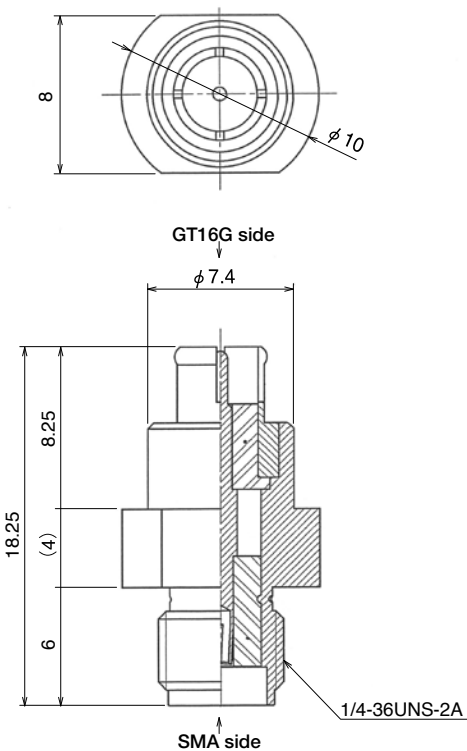


## SMA Conversion Adapter (coupling portion: GT16G side plug - SMA side jack)



Note: The adapter does not have a lock portion and thus can only be used for performance measurements.

Part Number	HRS No.	RoHS
GT16GP-HRMJ	766-0030-0	YES





## ◆ F Connector Composition Table

Terminal Ferrule	Outer Ferrule	Inner Terminal	Insulator	Outer Terminal	Housing	Retainer
GT16G-FR	GT16G-1.5DHQS	GT16G-2428SCF	GT16G-SC	GT16GM-/1.6-2.9SC	GT16GM-1S-HU	Not used
				GT16G-/1.6-2.9SC	GT16G-1S-HU	GT16C-1P/S-R
					GT16G-1S-HU(24)	
					GT16GD-1S-HU	
					GT16GW-1S-HU	GT5W-1P/S-R

## ◆ M Connector Composition Table

Terminal Ferrule	Outer Ferrule	Inner Terminal	Insulator	Outer Terminal	Housing	Retainer
GT16G-FR	GT16G-1.5DHQS	GT16G-2428PCF	GT16G-PC	GT16G-/1.6-2.9PC	GT16GM-1P-HU	Not used
					GT16GMN-1PP-HU	
					GT16GW-1P-HU	GT5W-1P/S-R

Terminal Ferrule	Outer Ferrule	Inner Terminal	Insulator	Outer Terminal	Housing	Retainer
Not used	Not used	GT16G-30PCF	GT16G-0.8PC	GT16G-/0.7-1.5PC	GT16GM-1P-HU	Not used
				GT16GB-/0.7-1.5PC	GT16GMN-1PP-HU	
					GT16GB-1PP-HU	

Board Type
GT16GM-1P-H
GT16GMP-1P-H
GT16G-1P-H
GT16GL-1P-H(70)
GT16GL-1P-H(71)
GT16GR-1P-H
GT16GD-1P-H

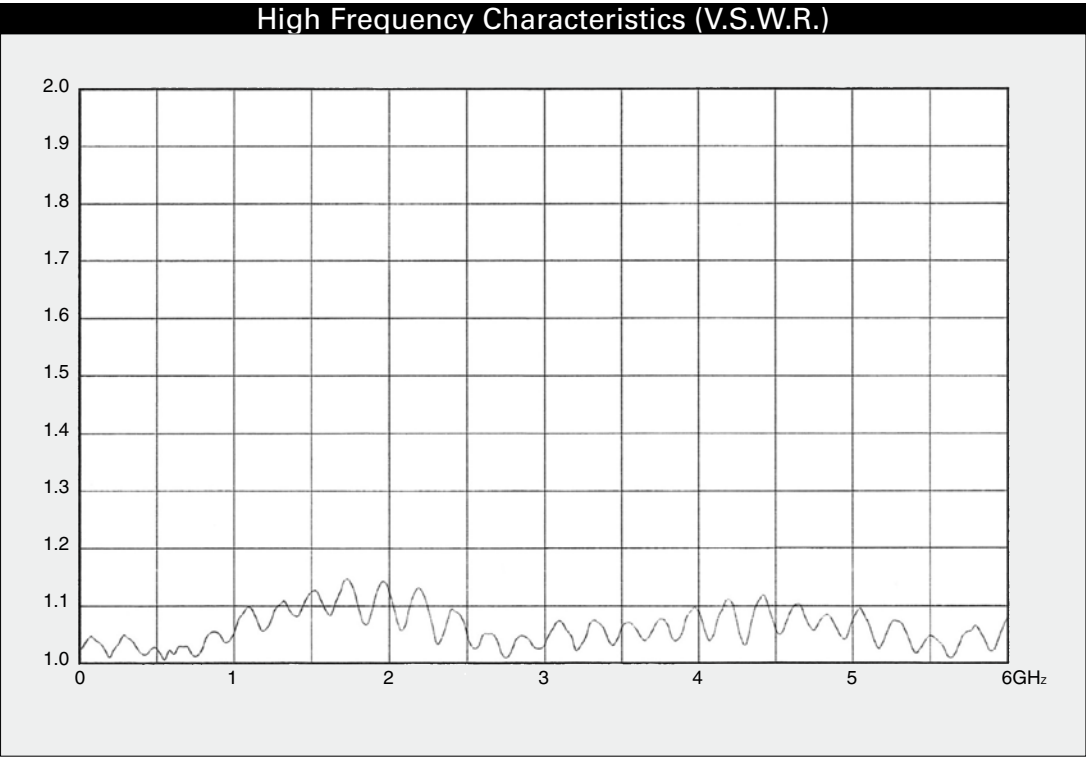
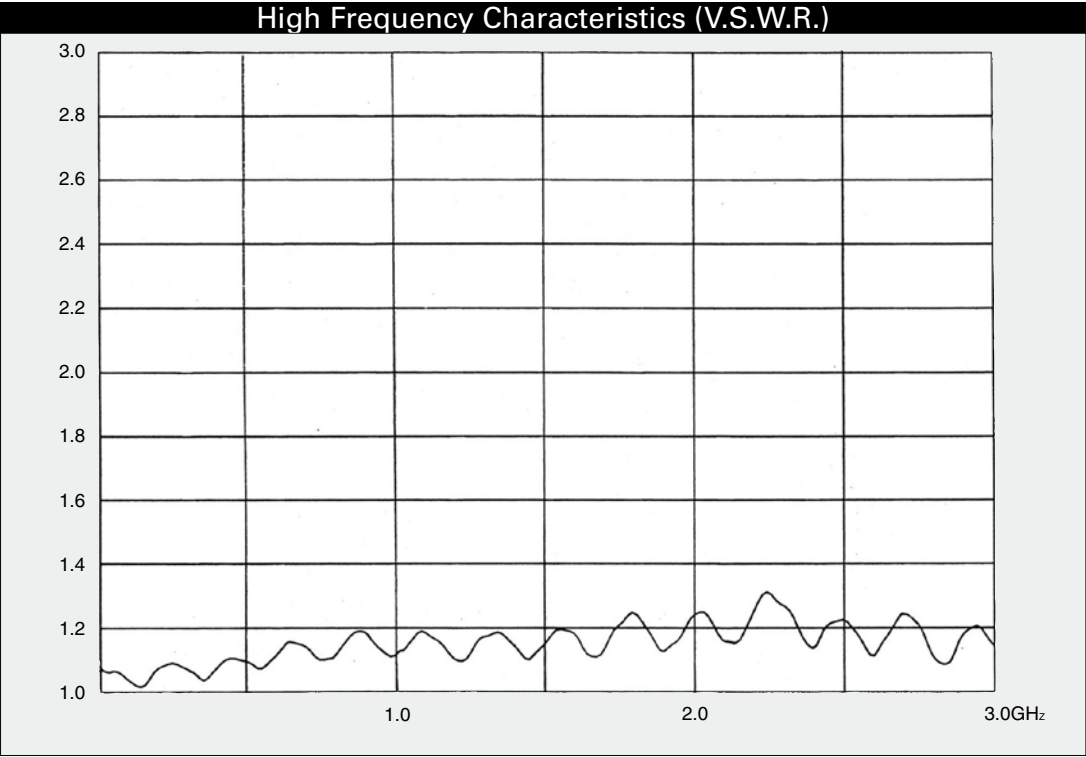
## ◆ Mating Table

F Connector	M Connector
GT16GM-1S-HU	GT16GM-1P-H
	GT16GMP-1P-H
	GT16GM-1P-HU
	GT16GMN-1PP-HU
GT16G-1S-HU	GT16G-1P-H
	GT16GL-1P-H(70)
	GT16GB-1PP-HU
	GT16GL-1P-H(71)
GT16G-1S-HU(24)	GT16GR-1P-H
GT16GD-1S-HU	GT16GD-1P-H

## ◆ Wiring Tools

Applicable Connectors		GT16GM-1S-HU GT16G-1S-HU GT16G-1S-HU(24) GT16GD-1S-HU	GT16GM-1P-HU GT16GMN-1PP-HU	GT16GB-1PP-HU
Process 1	Cable strip processing	Schleuniger MP257, etc. (Commercial product)	Schleuniger MP257, etc. (Commercial product)	Schleuniger MP257, etc. (Commercial product)
Process 2	Center terminal crimping	Crimping machine body type 105 AP105-GT16G-2428S	Crimping machine body type 105 AP105-GT16G-2428P	Crimping machine body type 105 AP105-GT16G-30P
Process 3	Cable forming	Shield forming tool GT16G-1.5DHQS/CF-MD	Shield forming tool GT16G-1.5DHQS/CF-MD	—
Process 4	Outside ferrule insertion	Outside ferrule insertion tool GT16G-1.5DHQS/PR-MD	Outside ferrule insertion tool GT16G-1.5DHQS/PR-MD	—
Process 5	Terminal ferrule insertion	Terminal ferrule insertion tool GT16G-FR/PR-MD	Terminal ferrule insertion tool GT16G-FR/PR-MD	Terminal ferrule insertion tool GT16G-FR/PR-MD
Process 6	Insulated washer assembly	Manual task	Manual task	Manual task
Process 7	Outside tube insertion	Insulated washer press tool GT16G-SC/PR-MD	—	—
Process 8	Outside tube tightening	Hand press MOS-7 GT16G-1.6-2.9S/CK-MP	Hand press HOS-7 GT16G-1.6-2.9P/CK-MP	Hand press HOS-7 GT16G-0.7-1.5P/CK-MP
Process 9	Housing, (retainer) installation	Manual task	Manual task	Manual task
Process 10	Inspection	High frequency characteristics test (Complete) Continuity / Withstand voltage test Inspection of external appearance	High frequency characteristics test (Complete) Continuity / Withstand voltage test Inspection of external appearance	High frequency characteristics test (Complete) Continuity / Withstand voltage test Inspection of external appearance

◆ Test Data (Using 1.5D-2W Type cable)



# Mouser Electronics

Authorized Distributor

Click to View Pricing, Inventory, Delivery & Lifecycle Information:

## Hirose Electric:

[AP105-GT16G-2428P\(64\)](#) [AP105-GT16G-2428S\(62\)](#) [AP105-GT16G-2428P](#) [AP105-GT16G-2428P\(63\)](#) [AP105-GT16G-2428S\(61\)](#) [AP105-GT16G-2428S](#) [AP105-GT16G-2428S\(63\)](#) [AP105-GT16G-2428S\(64\)](#) [AP105-GT16G-2428P\(62\)](#) [AP105-GT16G-2428P\(61\)](#)