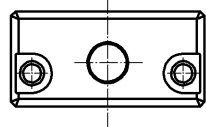
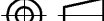


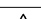
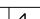


Jan. 1, 2022 Copyright 2022 HIROSE ELECTRIC CO., LTD. All Rights Reserved.



M2.5X0.45
(CROSS RECESSED NEED SCREWS WITH CAPTIVE WASHER)

NOTE 1 .ONE PACKAGE CONSISTS OF 50 PCS.

1	ZINC ALLOY	NICKEL PLATING			2	STEEL	NICKEL PLATING		
NO.	MATERIAL	FINISH . REMARKS			NO.	MATERIAL	FINISH . REMARKS		
<div>UNITS mm</div> <div></div>	<div>SCALE 2 : 1</div> <div></div>	COUNT	DESCRIPTION OF REVISIONS			DESIGNED	CHECKED	DATE	
		APPROVED : NM. NISHIMATSU 14. 06. 03			DRAWING NO. EDC3-128065-00				
		CHECKED : NM. NISHIMATSU 14. 06. 03			PART NO. TJ-KY-SA				
		DESIGNED : KG. OKITA 14. 06. 03			CODE NO. CL236-3112-7-00				
<div> HIROSE ELECTRIC CO. , LTD.</div>		DRAWN : KG. OKITA 14. 06. 03						<div></div> <div></div>	

Mouser Electronics

Authorized Distributor

Click to View Pricing, Inventory, Delivery & Lifecycle Information:

[Hirose Electric:](#)

[TJ-KY-SA](#)