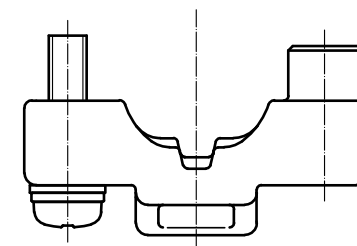
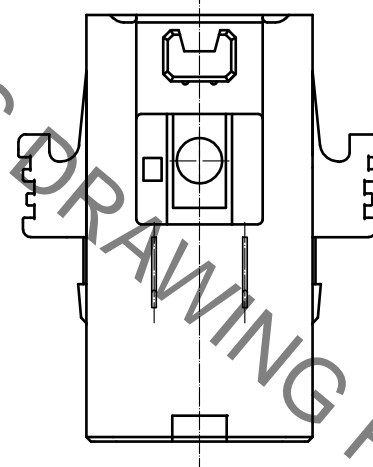
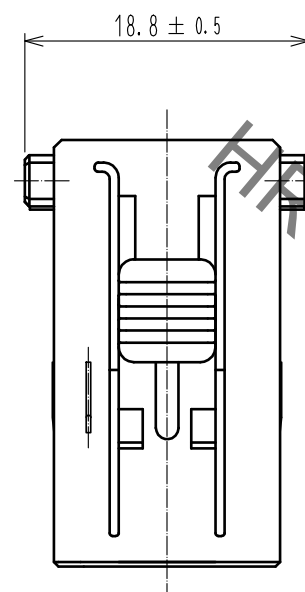
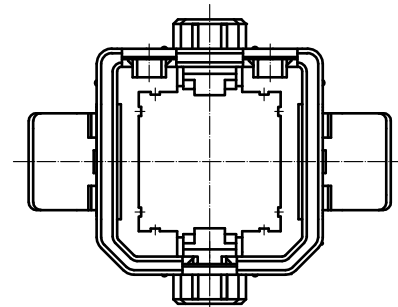
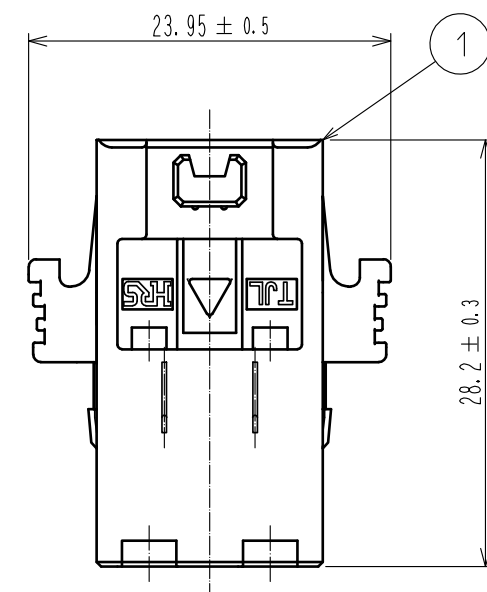
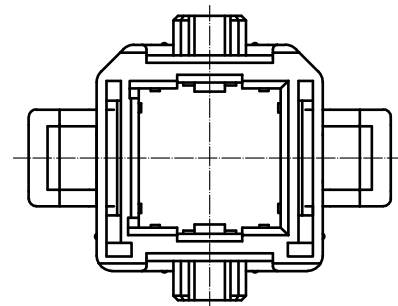
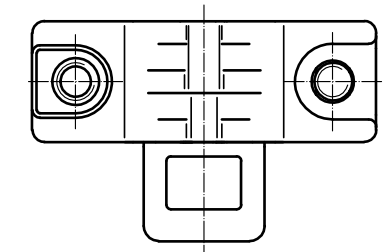
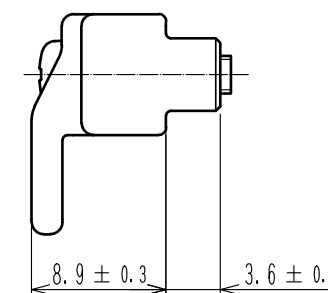
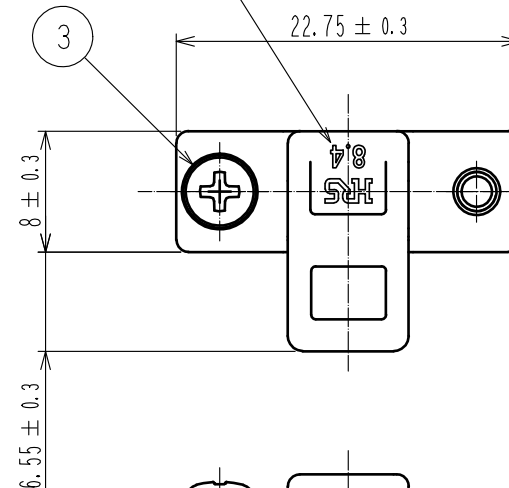


Sep.1.2021 Copyright 2021 HIROSE ELECTRIC CO., LTD. All Rights Reserved.
In case of consideration for using Automotive equipment / device which demand high reliability, kindly contact our sales window correspondents.



Clamp 1 (8.4)
(Attached parts 2 pcs)

Model identification symbol



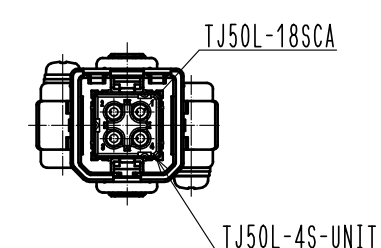
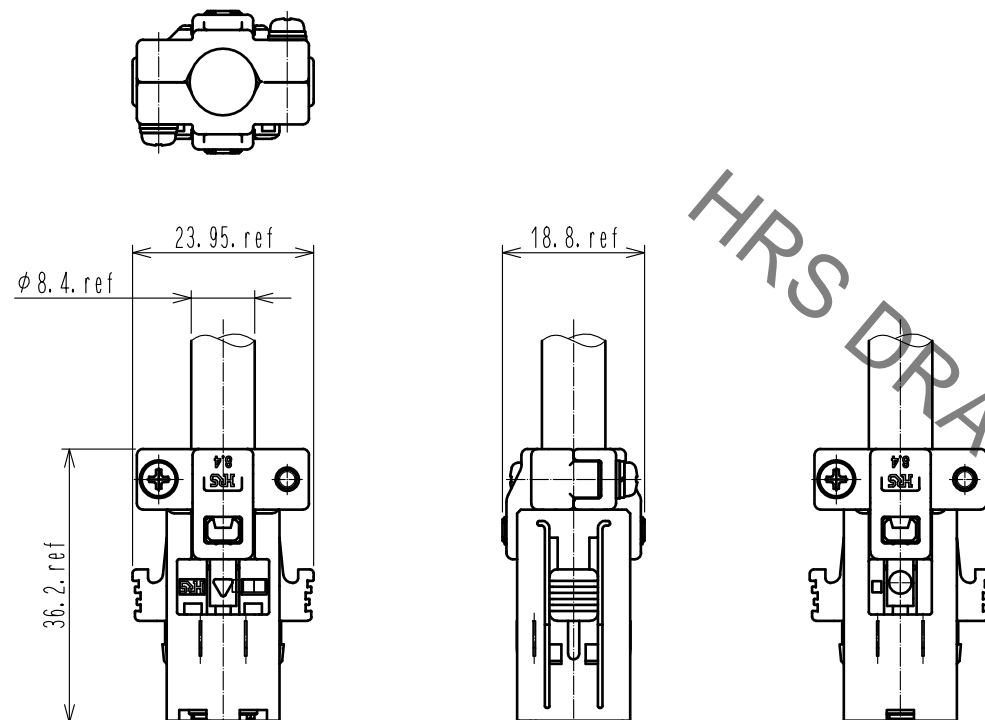
- Note
1. This product will be mated with the TJ*L series 1 port jack.
The TJ50L-4S-UNIT will be inserted in this product.
Please check the ETAD-E3078 assembly manual for further details.
 2. The key to prevent a mismatching (sold separately)
can be inserted in the places which are shown in the drawing.
 3. The recommended tightening torque of the pan head machine screw to be 0.36 ± 0.07 N·m.
To ensure a good balance between left and right, please tighten the pan head machine
screws alternately.
 4. As a countermeasure for vibration, please fixate the cable.
For TJ10L(1)-4P: between of 5cm from the clamp fittings.
For TJ20L(1)-4P: between of 15cm from the clamp fittings.
For TJ50L(1)-4P-C(**): between of 5cm from the clamp fittings.
 5. The applicable cable profile (outer diameter) is $\phi 8.4 \pm 0.4$ mm.

No.	Part name
①	P-Case (1)
②	Clamp 1 (8.4)
③	Pan head machine screw

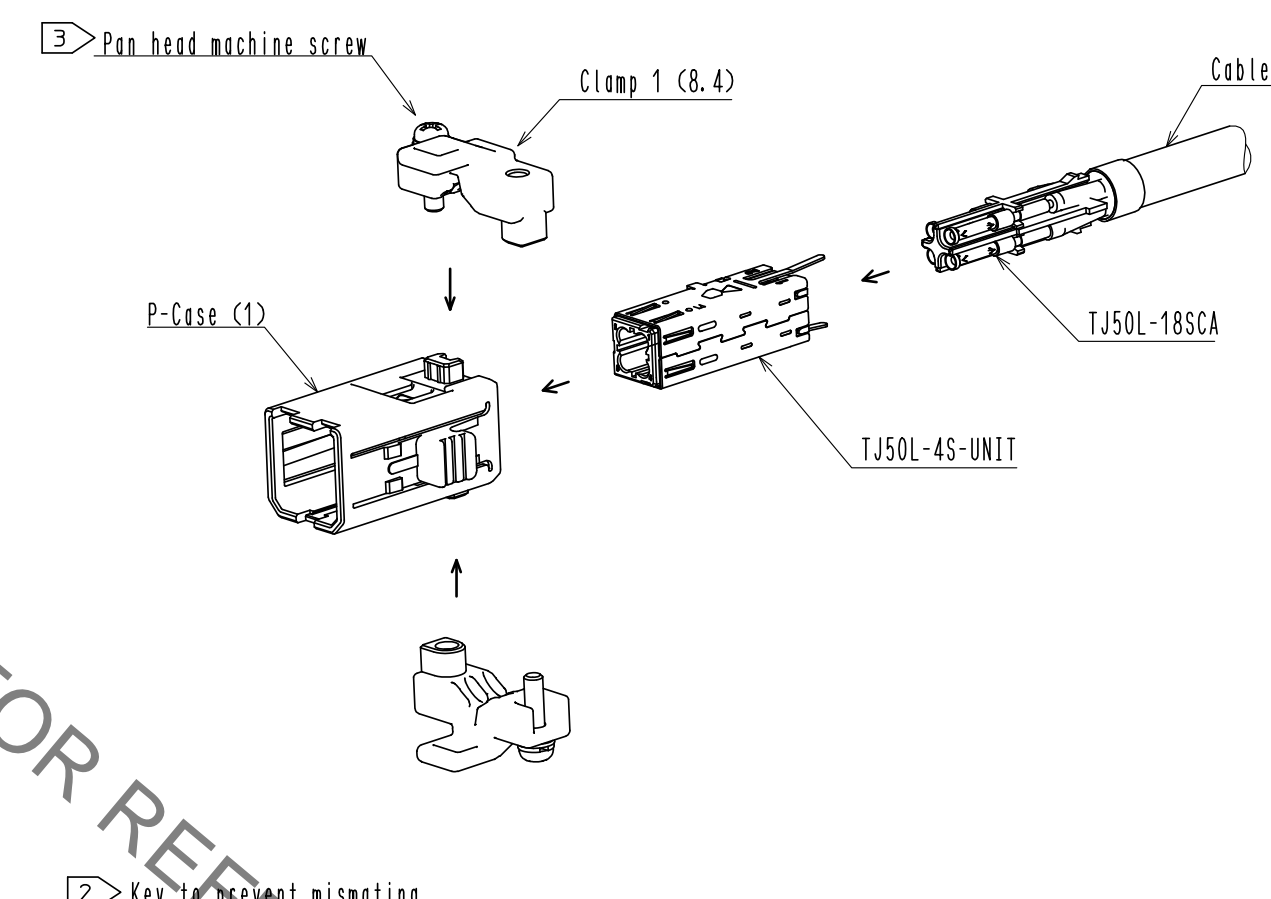
2	Zinc alloy	Under : Copper Plating 10μm MIN. Surface : Nickel Plating 5μm MIN.	3	Steel	M2.5×0.45 Surface : Zinc Plating 3μm MIN. Finish : Trivalent chromate treatment
1	PPS	Beige UL94V-0			
NO.	MATERIAL	FINISH . REMARKS	NO.	MATERIAL	FINISH . REMARKS
UNITS mm		SCALE 2 : 1	COUNT 2	DESCRIPTION OF REVISIONS DIS-E-00004258	DESIGNED HY. MATSUDA
				CHECKED TU. TANIGUCHI	DATE 20210226
HIROSE ELECTRIC CO., LTD.				APPROVED : TU. TANIGUCHI 20201015	
				CHECKED : TU. TANIGUCHI 20201015	
				DESIGNED : KN. ICHIKAWA 20201014	
				DRAWN : CT. YAMAMOTO 20201014	
				DRAWING NO. EDC-128636-00-01	
				PART NO. TJ50L(1)-4S-C(8.4)	
				CODE NO. CL0236-3227-9-00	1/2

Sep.1.2021 Copyright 2021 HIROSE ELECTRIC CO., LTD. All Rights Reserved.
In case of consideration for using Automotive equipment / device which demand high reliability, kindly contact our sales window correspondents.

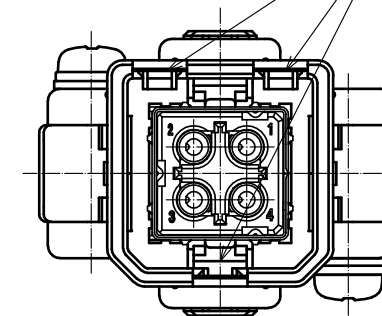
After wiring state (1:1)



Exploded view drawing (FREE)



Key to prevent mismatching (sold separately)
(Part name:TJL-KY , Code number:CL236-3209-7-00)



HRS	DRAWING NO.	EDC-128636-00-01	<div>122</div>
	PART NO.	TJ50L(1)-4S-C(8.4)	
	CODE NO.	CL0236-3227-9-00	

Mouser Electronics

Authorized Distributor

Click to View Pricing, Inventory, Delivery & Lifecycle Information:

[Hirose Electric:](#)

[TJ50L\(1\)-4S-C\(8.4\)](#)