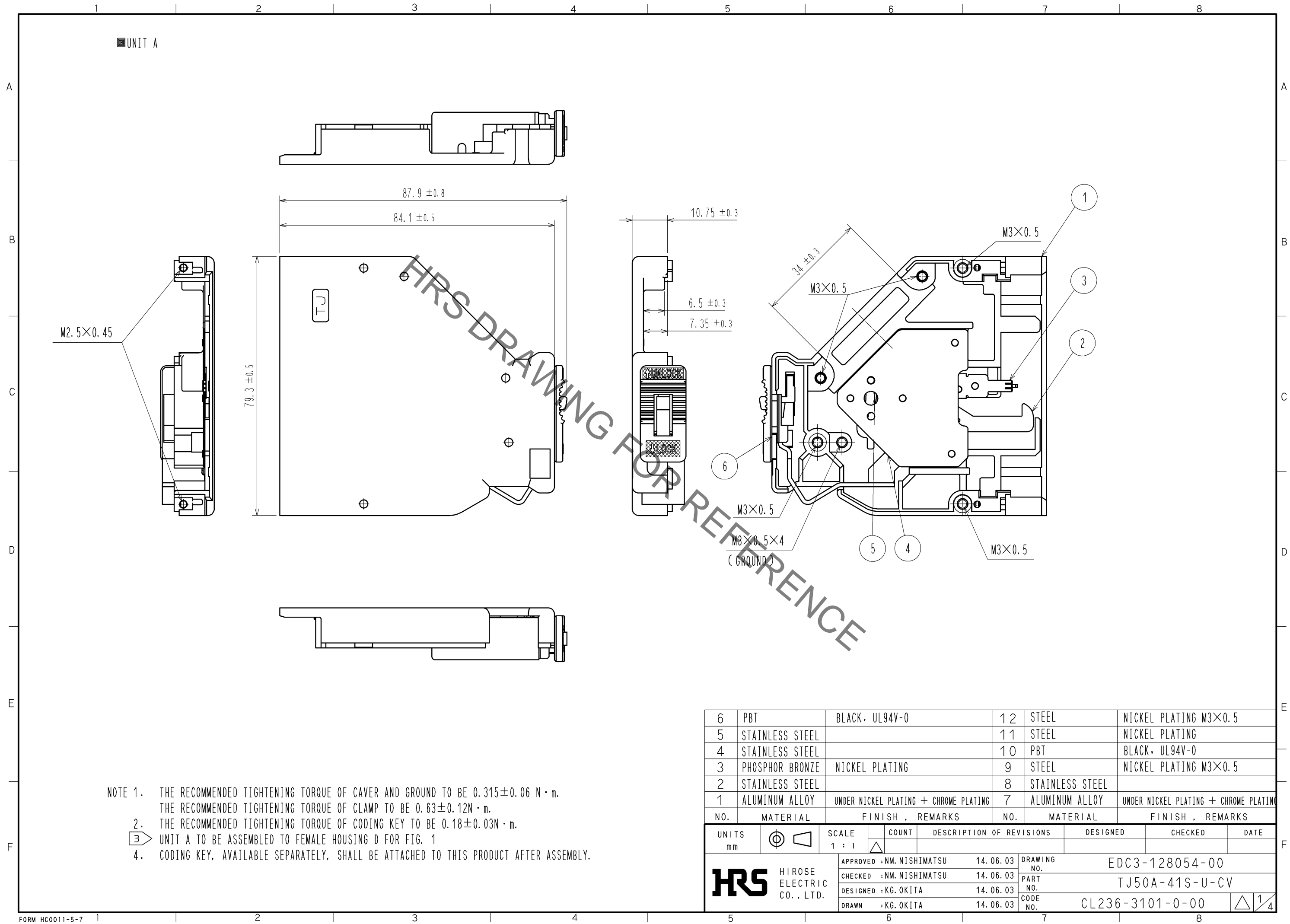
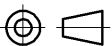





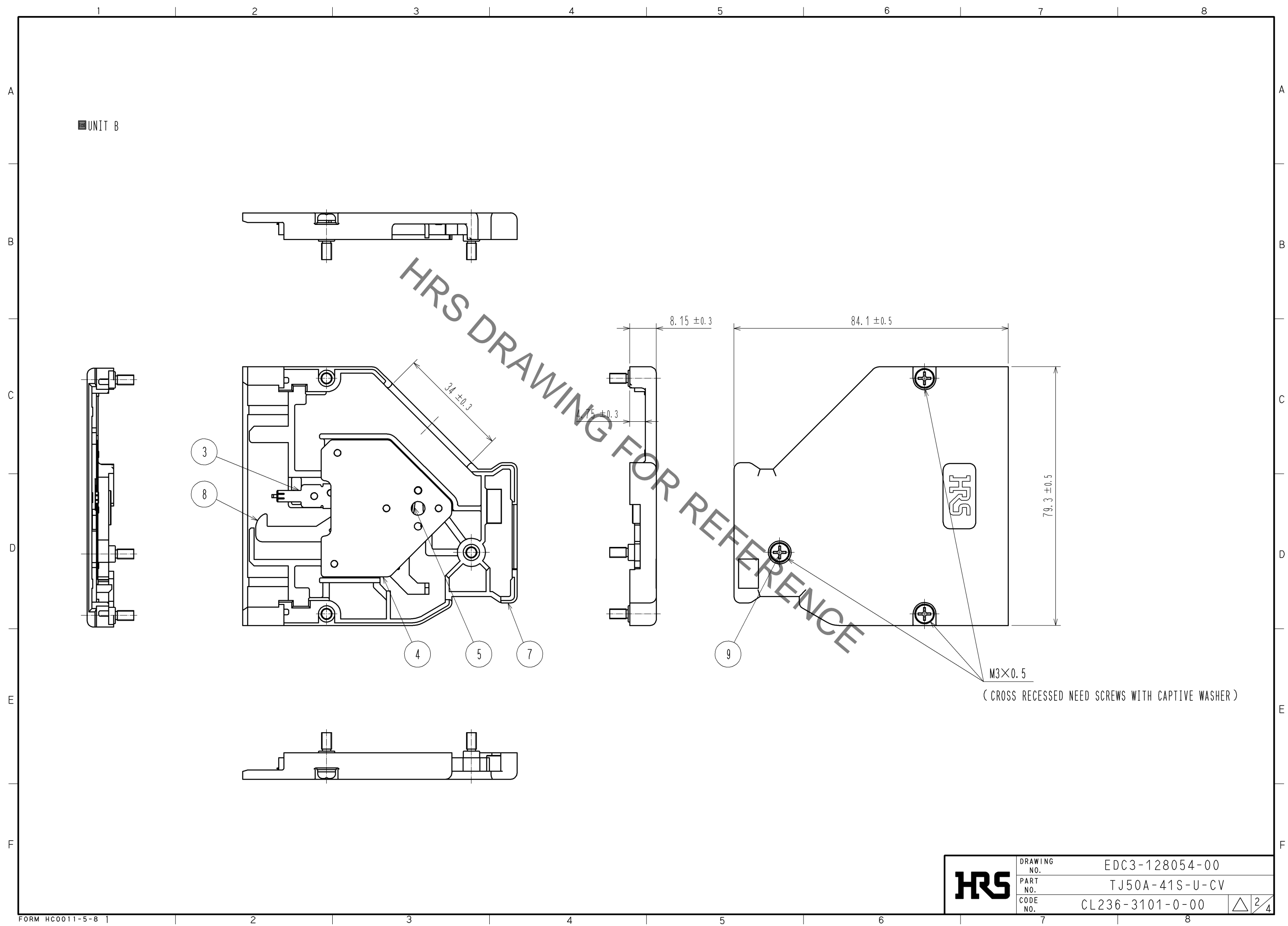
Aug.1.2021 Copyright 2021 HIROSE ELECTRIC CO., LTD. All Rights Reserved.
In case of consideration for using Automotive equipment / device which demand high reliability, kindly contact our sales window correspondents.



- NOTE 1. THE RECOMMENDED TIGHTENING TORQUE OF CAVER AND GROUND TO BE $0.315 \pm 0.06 \text{ N} \cdot \text{m}$.
THE RECOMMENDED TIGHTENING TORQUE OF CLAMP TO BE $0.63 \pm 0.12 \text{ N} \cdot \text{m}$.
2. THE RECOMMENDED TIGHTENING TORQUE OF CODING KEY TO BE $0.18 \pm 0.03 \text{ N} \cdot \text{m}$.
3. UNIT A TO BE ASSEMBLED TO FEMALE HOUSING D FOR FIG. 1
4. CODING KEY, AVAILABLE SEPARATELY, SHALL BE ATTACHED TO THIS PRODUCT AFTER ASSEMBLY.

6	PBT	BLACK, UL94V-0	12	STEEL	NICKEL PLATING M3×0.5				
5	STAINLESS STEEL		11	STEEL	NICKEL PLATING				
4	STAINLESS STEEL		10	PBT	BLACK, UL94V-0				
3	PHOSPHOR BRONZE	NICKEL PLATING	9	STEEL	NICKEL PLATING M3×0.5				
2	STAINLESS STEEL		8	STAINLESS STEEL					
1	ALUMINUM ALLOY	UNDER NICKEL PLATING + CHROME PLATING	7	ALUMINUM ALLOY	UNDER NICKEL PLATING + CHROME PLATING				
NO.	MATERIAL	FINISH , REMARKS	NO.	MATERIAL	FINISH , REMARKS				
UNITS mm			SCALE 1 : 1		COUNT	DESCRIPTION OF REVISIONS	DESIGNED	CHECKED	DATE
 HIROSE ELECTRIC CO., LTD.					APPROVED :NM. NISHIMATSU	14. 06. 03	DRAWING NO. EDC3-128054-00		
					CHECKED :NM. NISHIMATSU	14. 06. 03	PART NO. TJ50A-41S-U-CV		
					DESIGNED :KG. OKITA	14. 06. 03	CODE NO. CL236-3101-0-00		
					DRAWN :KG. OKITA	14. 06. 03	 1/4		

Aug.1.2021 Copyright 2021 HIROSE ELECTRIC CO., LTD. All Rights Reserved.
In case of consideration for using Automotive equipment / device which demand high reliability, kindly contact our sales window correspondents.



HRS	DRAWING NO.	EDC3-128054-00
	PART NO.	TJ50A-41S-U-CV
	CODE NO.	CL236-3101-0-00
		△ 2/4

■FEMALE HOUSING D (ATTACHED PARTS)

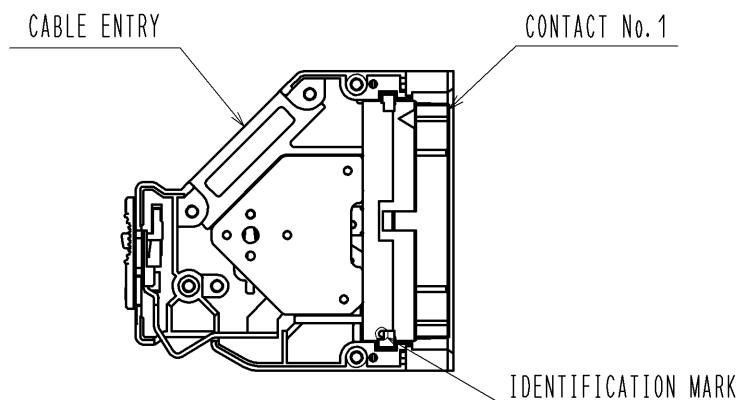
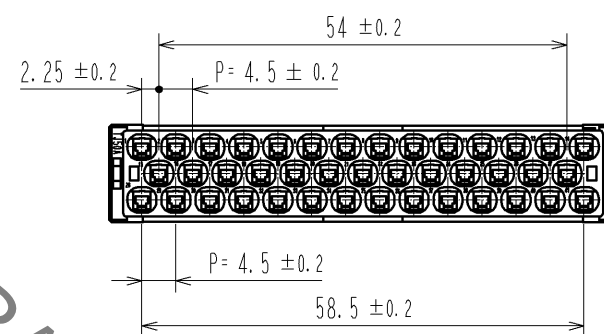
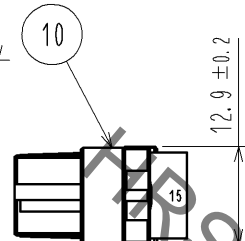
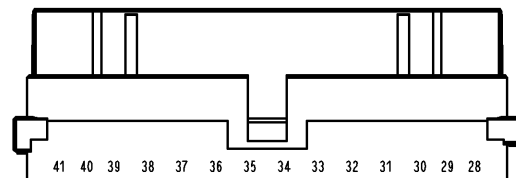
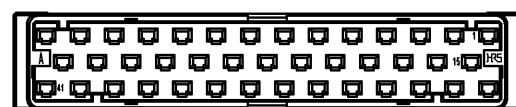
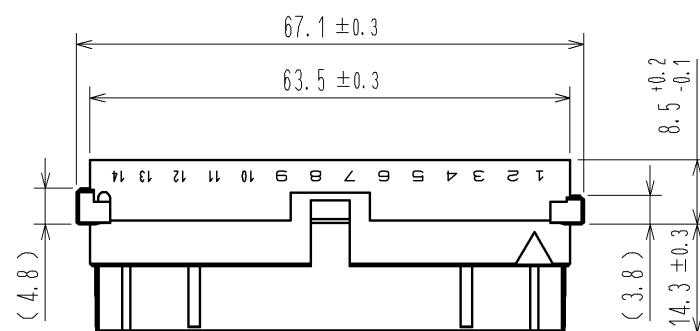
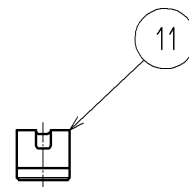
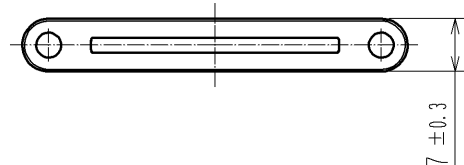
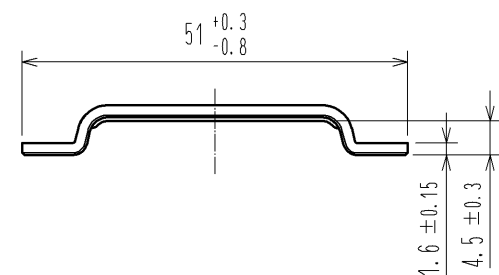
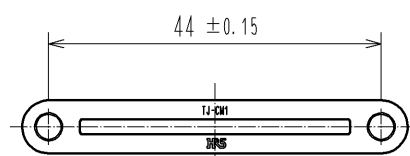
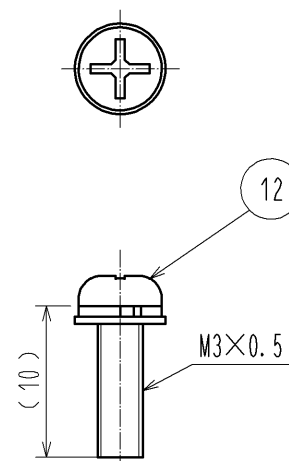


FIG. 1 ASSEMBLY DRAWING (1:2)

■CLAMP METAL (ATTACHED PARTS)



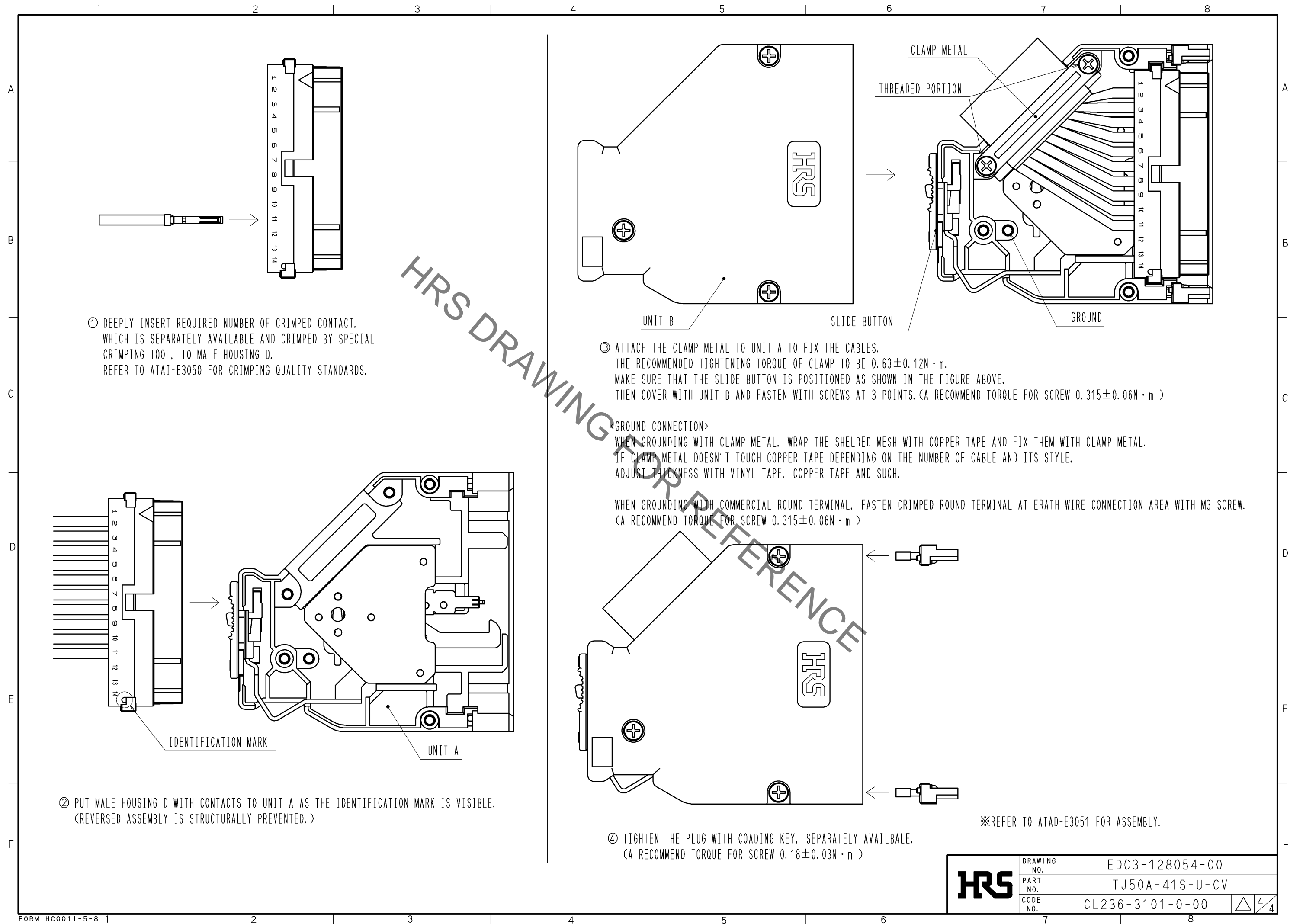
■SCREW FOR CLAMP METAL (ATTACHED PARTS) (2:1)
(CROSS RECESSED NEED SCREWS WITH CAPTIVE WASHER)



HR5

図番: EDC3-128054-00
製品名: TJ50A-41S-U-CV
製品コード: CL236-3101-0-00

3/4



Mouser Electronics

Authorized Distributor

Click to View Pricing, Inventory, Delivery & Lifecycle Information:

[Hirose Electric:](#)

[TJ50A-41S-U-CV](#)