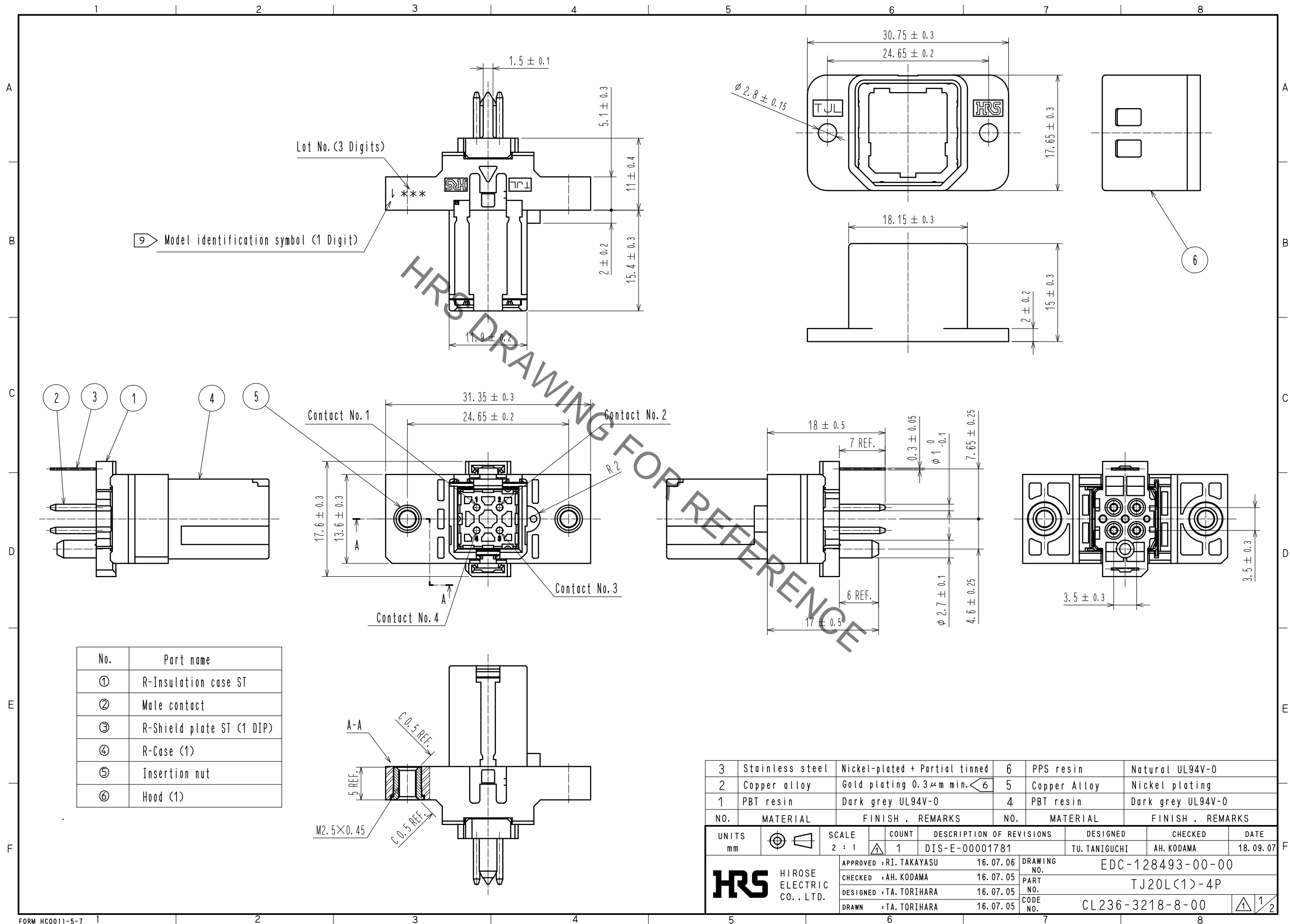
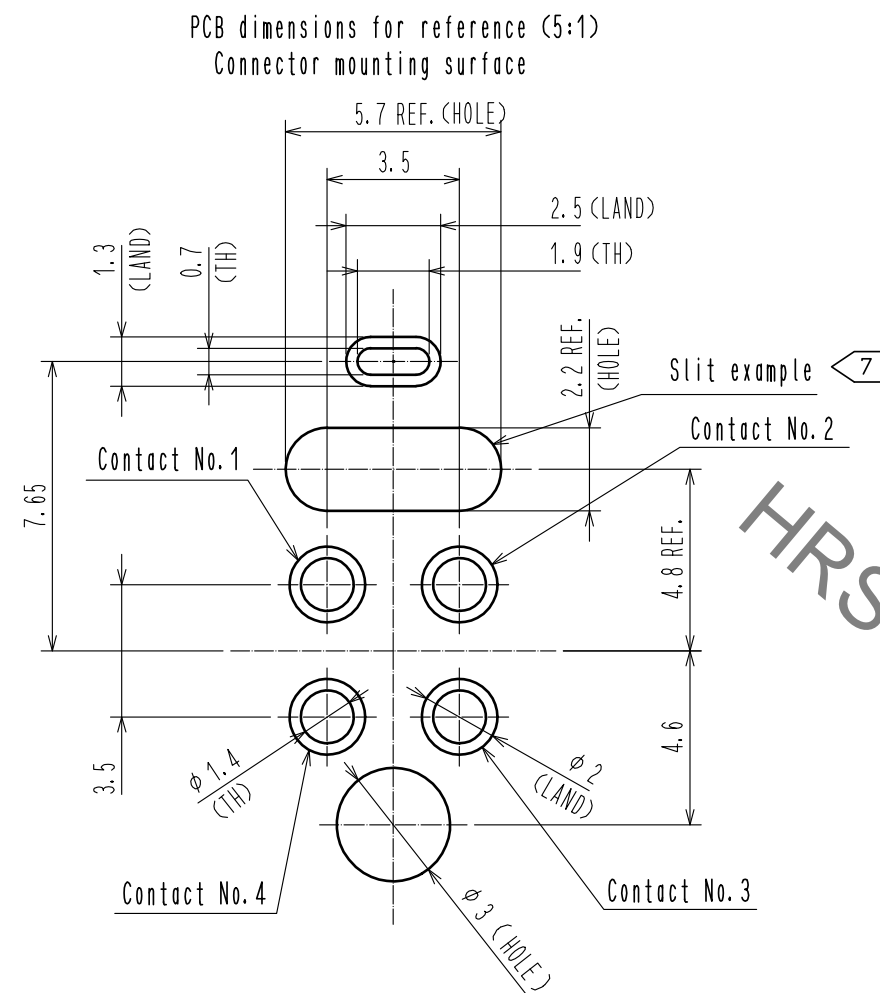
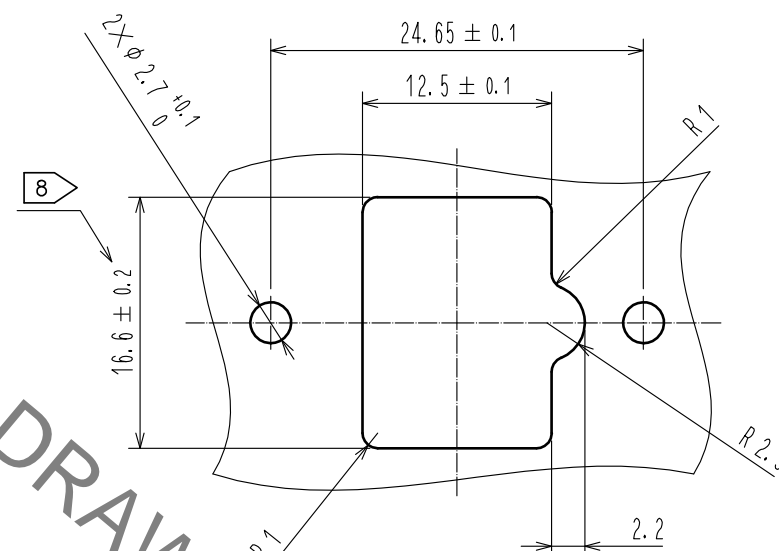


Jan.1.2022 Copyright 2022 HIROSE ELECTRIC CO., LTD. All Rights Reserved.
In case of consideration for using Automotive equipment / device which demand high reliability, kindly contact our sales window correspondents.

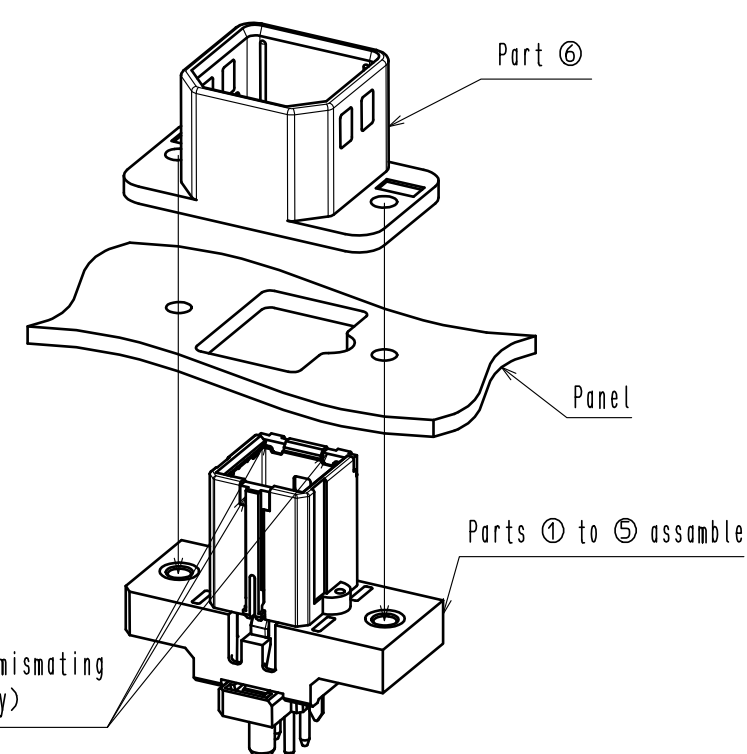




8 Panel dimensions (reference)
Front side
(Panel thickness : 1.6mm to 2.5mm)



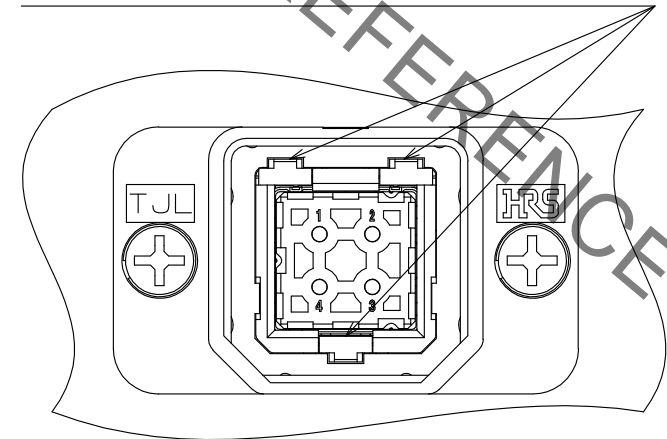
3 Panel mounting (Exploded view drawing, FREE)



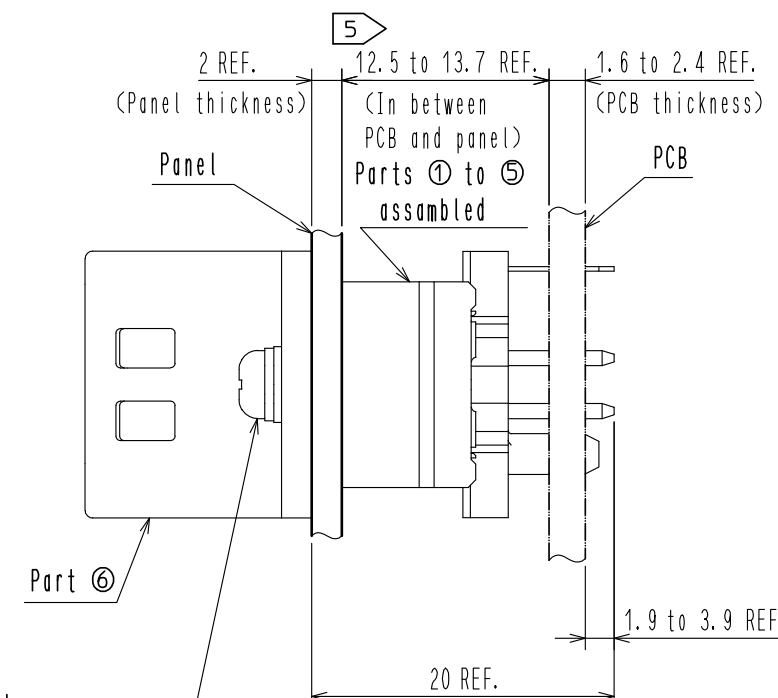
10 Key to prevent mismatching
(sold separately)

10 Key to prevent mismatching

Key to prevent mismatching (sold separately)
(Part number:TJL-KY , Code number:CL236-3209-7-00)



5 Drawing for PCB and panel in mounted state



3 JIS B 1188
Spring washers +
cross recessed pan head screw
with captive small circular
washer M2.5 \times 10 min.

- Notes
- This product will be mated together with the TJL series 1 port plug.
 - Parts 1 to 5, the assembled product and the attached part 6 will be delivered.
 - Screw the already assembled product, the panel and the Hood (Part number 6) together. (Recommended tightening torque is 0.36 ± 0.07 N \cdot m)
 - This product will be packed in a tray.
 - Place the spacer in between the PCB and the panel and fix them together. (The size is not determined by the connector)
Do not apply any additional load on this part and be careful during the mounting of the PCB and the panel.
 - Because the Male contact 2 is plated by the barrel plating process, the gold plating will cover the whole contact with a minimum thickness of 0.3 μ m.
 - The purpose of the slit which is illustrated in the drawing, is to increase the creepage distance between the contact land and the R-shield plate ST (1 DIP) and is just an example which can vary. Please choose a creeping distance accordingly to your needs.
 - The clearance distance between the R-Shield plate ST (1 DIP) and the panel should be at the point with the shortest distance at least 2.98 ± 0.3 mm.
 - In order to identify the type name in the TJL series, a one digit number has been used. The number '1' stands in this case for the TJ20L(1)-4P.
 - The key to prevent misssmating (sold separately) can be inserted in the 3 places shown in the drawing.
 - As a countermeasure for vibration, please fixate a cable of the plug side at 150 mm or less from the clamp fittings.

HRS	DRAWING NO.	EDC-128493-00-00
	PART NO.	TJ20L(1)-4P
	CODE NO.	CL236-3218-8-00
		2/2

Mouser Electronics

Authorized Distributor

Click to View Pricing, Inventory, Delivery & Lifecycle Information:

[Hirose Electric:](#)

[TJ20L\(1\)-4P](#)