

Jan.1.2022 Copyright 2022 HIROSE ELECTRIC CO., LTD. All Rights Reserved.
In case of consideration for using Automotive equipment / device which demand high reliability, kindly contact our sales window correspondents.

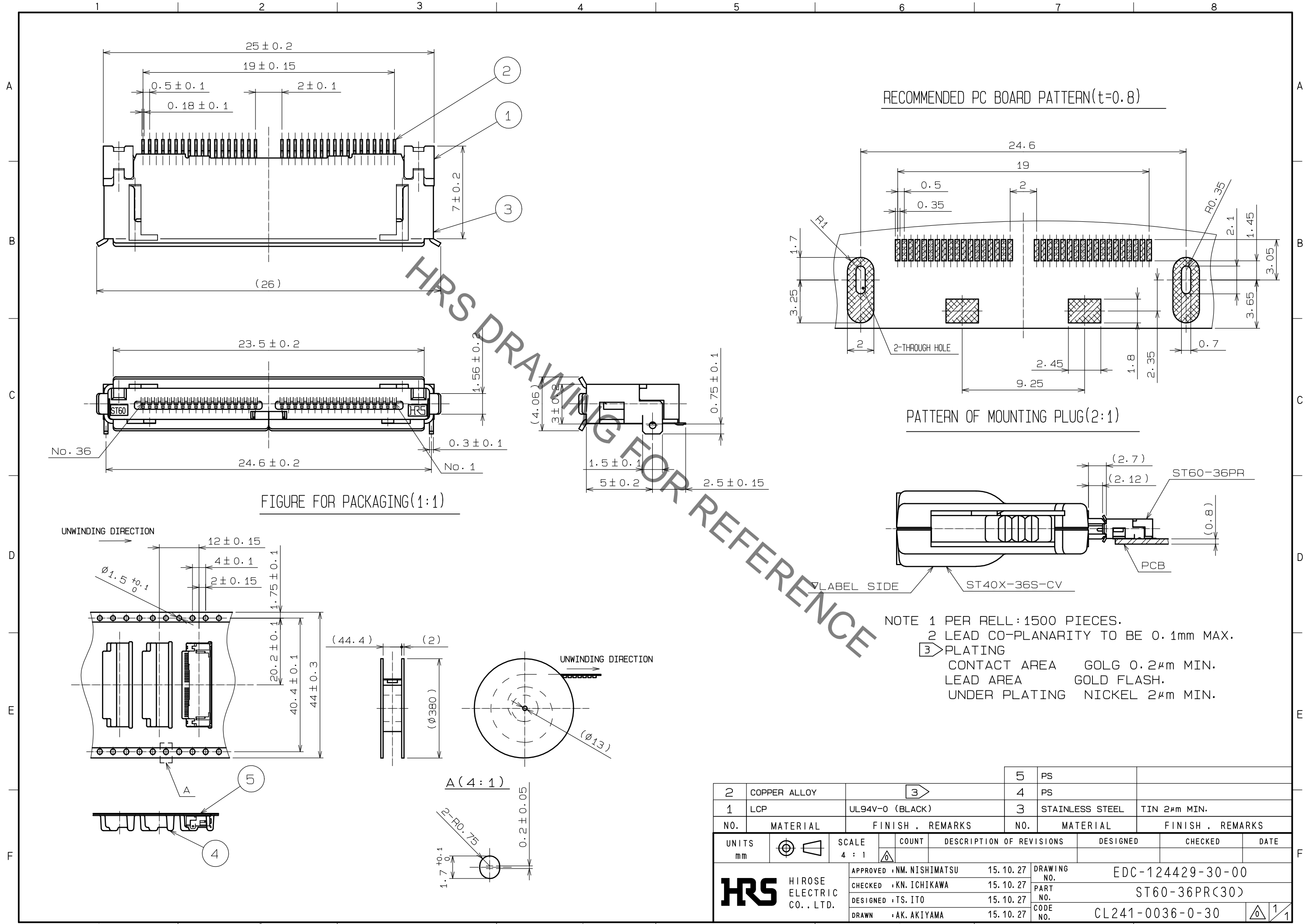


FIGURE FOR PACKAGING(1:1)

RECOMMENDED PC BOARD PATTERN(t=0.8)

PATTERN OF MOUNTING PLUG(2:1)

NOTE 1 PER REL : 1500 PIECES.
 2 LEAD CO-PLANARITY TO BE 0.1mm MAX.
 3 PLATING
 CONTACT AREA GOLG 0.2μm MIN.
 LEAD AREA GOLD FLASH.
 UNDER PLATING NICKEL 2μm MIN.

2	COPPER ALLOY		3	5	PS	
1	LCP	UL94V-0 (BLACK)		4	PS	
				3	STAINLESS STEEL	TIN 2μm MIN.
NO.	MATERIAL	FINISH . REMARKS	NO.	MATERIAL	FINISH . REMARKS	
UNITS	mm	SCALE	4 : 1	COUNT	DESCRIPTION OF REVISIONS	DESIGNED
						CHECKED
						DATE
APPROVED : NM. NISHIMATSU			15.10.27	DRAWING NO. EDC-124429-30-00		
CHECKED : KN. ICHIKAWA			15.10.27	PART NO. ST60-36PR(30)		
DESIGNED : TS. ITO			15.10.27	CODE NO. CL241-0036-0-30		
DRAWN : AK. AKIYAMA			15.10.27	1/1		

Mouser Electronics

Authorized Distributor

Click to View Pricing, Inventory, Delivery & Lifecycle Information:

[Hirose Electric:](#)

[ST60-36PR\(30\)](#)