

May.1.2021 Copyright 2021 HIROSE ELECTRIC CO., LTD. All Rights Reserved.
In case of consideration for using Automotive equipment / device which demand high reliability, kindly contact our sales window correspondents.

TO
R

A
B
C
D
E
F

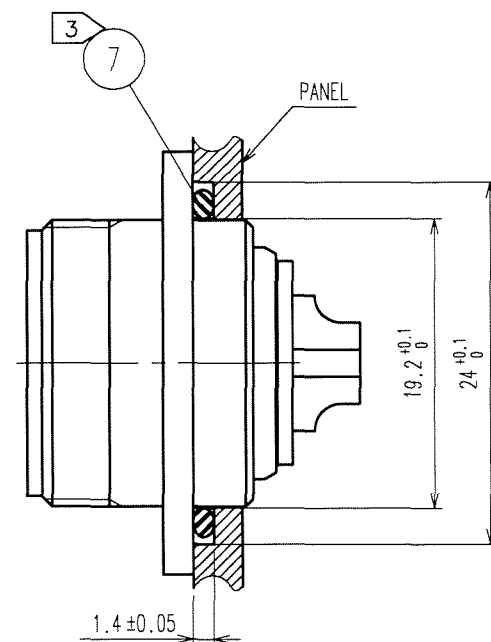
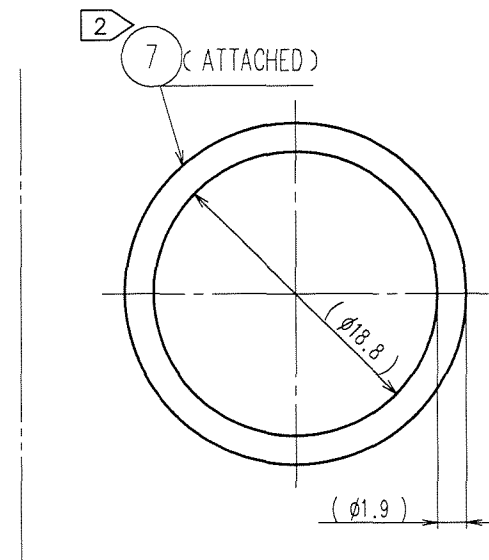
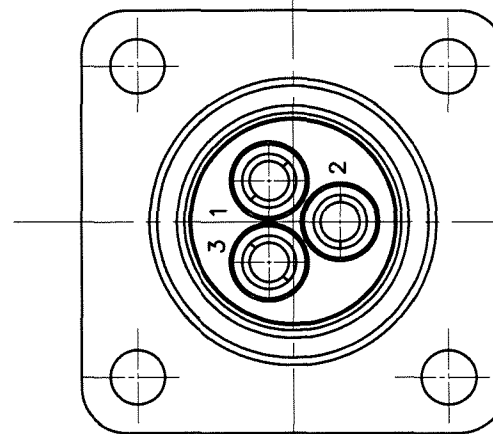
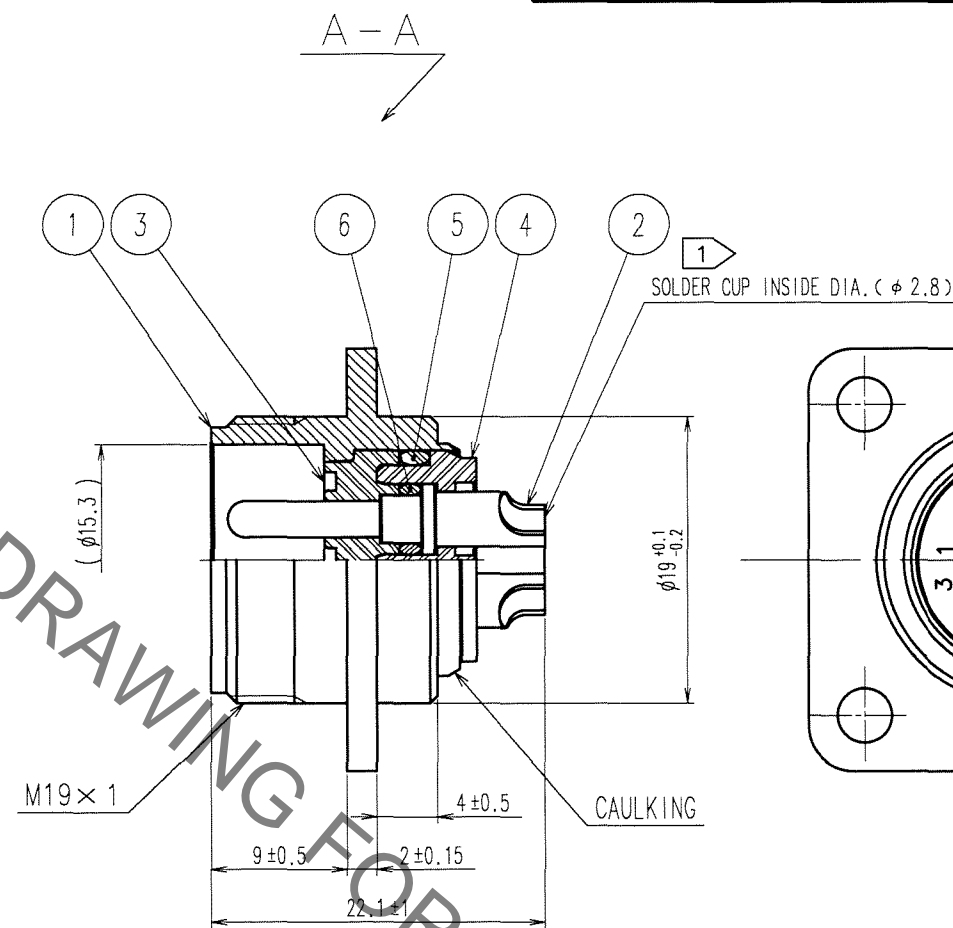
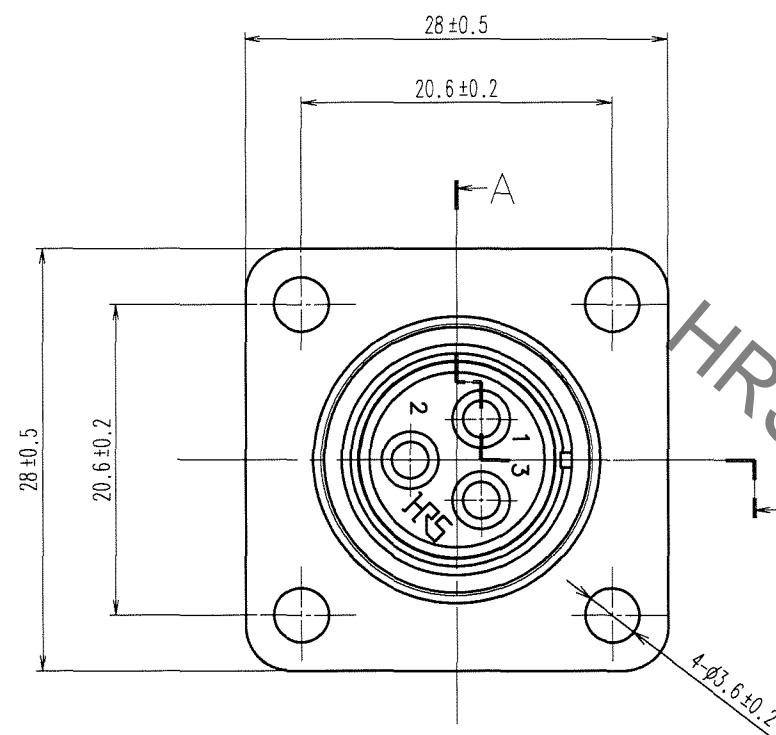


FIG.-1 REF.NO. ⑦ PANEL CUTOUT

- NOTES
- THE DIRECTION OF SOLDER CUP, REF.NO. ② IS AN EXAMPLE. WHEN WATERPROOFING WITH PANEL, USE REF.NO. ⑦ (O-RING).
 - THE DIMENSION OF ATTACHING REF.NO. ⑦ TO A PANEL IS SHOWN IN FIG-1. WHEN MOUNTED ON CHASSIS, BE CAREFUL THAT REFERENCE NO. ⑦ IS FITTED INTO THE INDICATED GROOVE WITHOUT ANY BITING.
 -

4	DIALYL PHTHALATE	(BLACK) UL94V-0			
3	DIALYL PHTHALATE	(BLACK) UL94V-0	7	SILICONE RUBBER	(BLACK)
2	BRASS	OVER PLATING: GOLD 0.2μm min. UNDER PLATING: NICKEL 3μm min.	6	SILICONE RUBBER	(RED)
1	ZINC ALLOY	CHROMATE PLATING	5	SILICONE RUBBER	(RED)
NO.	MATERIAL	FINISH, REMARKS	NO.	MATERIAL	FINISH, REMARKS
CODE NO. (OLD) CL			DRAWN M. Sato		
			DESIGNED J. Komatsu		
			CHECKED M. Sato		
			APPROVED M. Sato		
			RELEASED ..		
SCALE 2 : 1			DRAWING NO. EDC3-111252-72		
UNITS mm			PART NO. RM15WTRZB-3PA(72)		
HRS HIROSE ELECTRIC CO., LTD			CODE NO. CL109-1692-7-72		
			1/1		

Mouser Electronics

Authorized Distributor

Click to View Pricing, Inventory, Delivery & Lifecycle Information:

[Hirose Electric:](#)

[RM15WTRZB-3PA\(72\)](#)